



Special Tools Bulletin

TITLE:

Newsletter 71: Mandatory Tools

NO: 217	ISSUE DATE: 2016-09-01	CAR MARKET: United States and Canada	Page 1 of 4
	STATUS DATE: 2016-09-01		

“Right first time in Time”

Bosch Automotive Service Solutions
28635 Mound Road
Warren, MI 48092
Visit volvodealersolutions.com
Call 1-800-345-3399

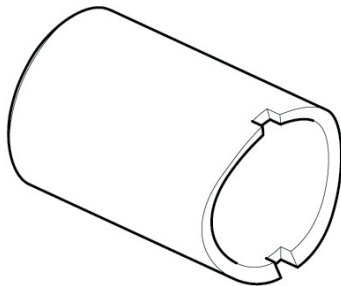
All tools have been classified as required, and will be allocated to all U.S. and Canadian Volvo retailers by Bosch Corporation. U.S. retailers will be billed by Volvo Cars of North America, LLC.

Overview of contents:

Kit Number 33300288

<u>Art No.</u>	<u>Description</u>	<u>Standard</u>
9997601	Counterhold	C1
9997602	Counterhold	C1
9997604	Drift	C1
9997606	Socket	C1
9997607	Flush Tool	C1
9997608	Counterhold	C1
9997611	Puller	C1
9997612	Drift	C1
9997613	Centering Drift	C1

Service Personnel: Read and initial	SERVICE MANAGER	PARTS MANAGER	WORKSHOP FOREMAN	SERVICE TECHNICIANS									

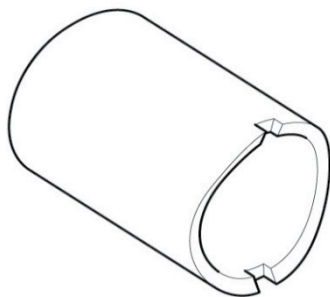


9997601 Counterhold

Used when removing and installing the outer bushing front control arm, for left side.

Works with Drift 9997594 and Drift 9997604.

Tool standard	C1
Tool group	61.0
Tool bulletin	391
Model	S90 (16-), V90 (16-)
Tool board	61

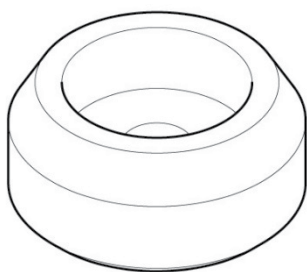


9997602 Counterhold

Used when removing and installing the outer bushing front control arm, for right side.

Works with Drift 9997594 and Drift 9997604.

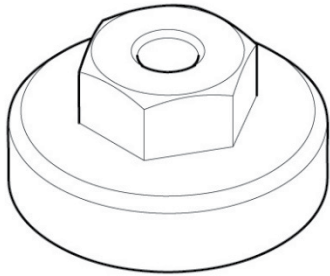
Tool standard	C1
Tool group	61.0
Tool bulletin	391
Model	S90 (16-), V90 (16-)
Tool board	61



9997604 Drift

Used for mounting bushing on front side of the left/rear link arm. Works with Drift 9997601 and 9997602 Drift.

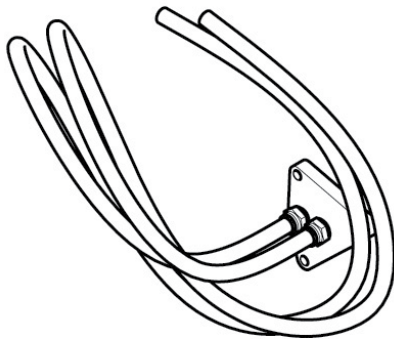
Tool standard	C1
Tool group	61.0
Tool bulletin	387
Model	XC90 (16-)
Tool board	61



9997606 Socket

Used in assembly and disassembly of the rear sill molding.

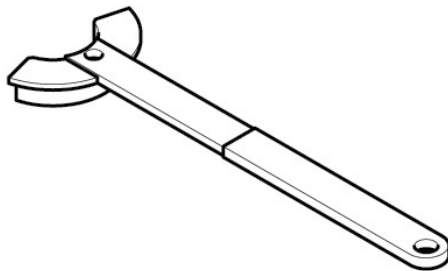
Tool standard	C1
Tool group	84.0
Tool bulletin	391
Model	S90 (16-)
Tool board	80



9997607 Flush Tool

Used for flushing the automatic transmission.

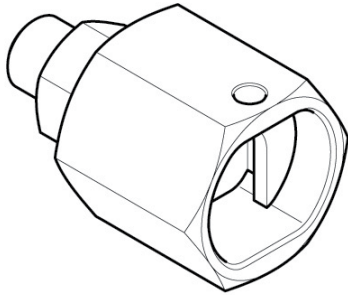
Tool standard	C1
Tool group	49.0
Tool bulletin	391
Model	TF71SC, TF80SC, TF80SD, TG81SC
Tool board	40



9997608 Counterhold

Used in assembly and disassembly of the propeller shaft.

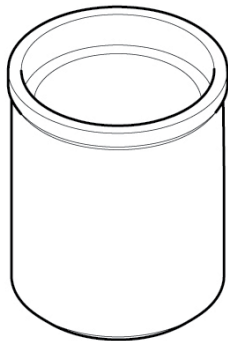
Tool standard	C1
Tool group	45.0
Tool bulletin	391
Model	S90 (16-), V90 (16-), XC90 (16-) AWD
Tool board	40



9997611 Puller

Used when disassembling the pressure screw in the link arm.

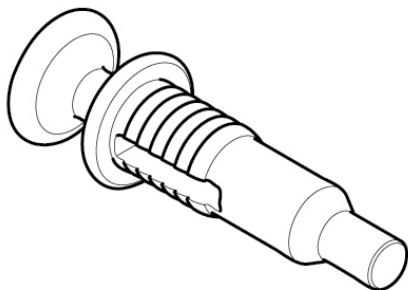
Tool standard	C1
Tool group	65.0
Tool bulletin	391
Model	S90 (16-), V90 (16-)
Tool board	65



9997612 Drift

Used when removing the rear bushing lower drop link arm rear.

Tool standard	C1
Tool group	65.0
Tool bulletin	391
Model	S90 (16-), V90 (16-), XC90 (16-)
Tool board	65



9997613 Centering Drift

Used to zero position the balance shaft at timing belt replacement.

Tool standard	C1
Tool group	43.0
Tool bulletin	391
Model	B4204TX-, B4154TX-, D4204TX-motors
Tool board	43