



Model Year 2016 Scrambler Italia Independent Introduction  
Models: 2016 Scrambler Italia Independent (all country versions)  
Service Bulletin SRV-SRB-16-016

Date: April 20th, 2016  
To: Dealer Principal, General Manager, Service Manager, and Service Technician  
From: Richard Kenton, Technical Director; Jonathan LaForte, Technical Manager

---

Dear Ducati Dealer,

Ducati is pleased to provide further details regarding service strategy for the Model Year 2016 Italia Independent version of the Scrambler family.

Within the document you will also find all the references necessary to prepare the vehicle for Pre-delivery Inspection, and the instructions for vehicle maintenance.

Please be reminded that during the first 6 months (until 9/30/2016) any and all faults found on the motorcycle must be communicated through YouTech, including a detailed description and picture(s). Warranty claim approval is dependent upon these reports (this process does not apply to service under Campaigns, Technical Bulletins or Tips & Tricks).



Here follows a recap of the status of all Service operations associated with this model:

Technical Training	Already done
Spare parts catalogue	Available on DCS
Workshop manual	Available by April on DCS
DDS Diagnosis 2.0	Already available for download
Pre-delivery checks	Attached to this Service Bulletin
Maintenance plan	Attached to this Service Bulletin
Flat rate tables	Available by April on DCS
Owner's manual	Available on Ducati.com website under section Dealers/Service/Maintenance



Model Year 2016 Scrambler Italia Independent Introduction  
 Models: 2016 Scrambler Italia Independent (all country versions)  
 Service Bulletin SRV-SRB-16-016

*Version*

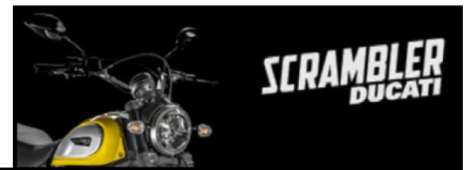
VERSION	ITALIA INDEPENDENT EQUIPMENT						
 	<ul style="list-style-type: none"> <li>• Black engine with machined cylinder head fins</li> <li>• Black Termignoni complete exhaust system</li> <li>• Cafè racer headlight fairing</li> <li>• Variable section handlebar in cafè racer style</li> <li>• Rear-view mirrors at the handlebar</li> <li>• Short front mudguard</li> <li>• Dedicated leather seat</li> <li>• Night copper aluminum tank side covers</li> <li>• Night copper steel tube frame</li> <li>• Night copper aluminum rims</li> </ul> <p style="text-align: center;"><i>COLORS</i></p> <table border="1" data-bbox="771 997 1510 1092"> <thead> <tr> <th><i>Bodywork</i></th> <th><i>Frame</i></th> <th><i>Rims</i></th> </tr> </thead> <tbody> <tr> <td>Matt black</td> <td>Night copper</td> <td>Night copper</td> </tr> </tbody> </table>	<i>Bodywork</i>	<i>Frame</i>	<i>Rims</i>	Matt black	Night copper	Night copper
<i>Bodywork</i>	<i>Frame</i>	<i>Rims</i>					
Matt black	Night copper	Night copper					

**Vehicle pre-delivery**

All operations required during the pre-delivery inspection of Model Year 2016 Scrambler Italia Independent are found in Service Bulletin "SVC-15-003 Model Year 2015 Scrambler Introduction" and on PDI Check-List (*Ed.04/16*) attached to this Service Bulletin.



**PRE-DELIVERY - Check List**



**Rear-view mirror assembly**

The rear-view mirrors of the Italia Independent version are approved to be positioned both in the LOW and HIGH configuration and therefore they can be installed according to ergonomics and/or upon discretion of the rider.

Unless otherwise requested by the Customer, we ask you to install the rear-view mirrors in the LOW configuration.



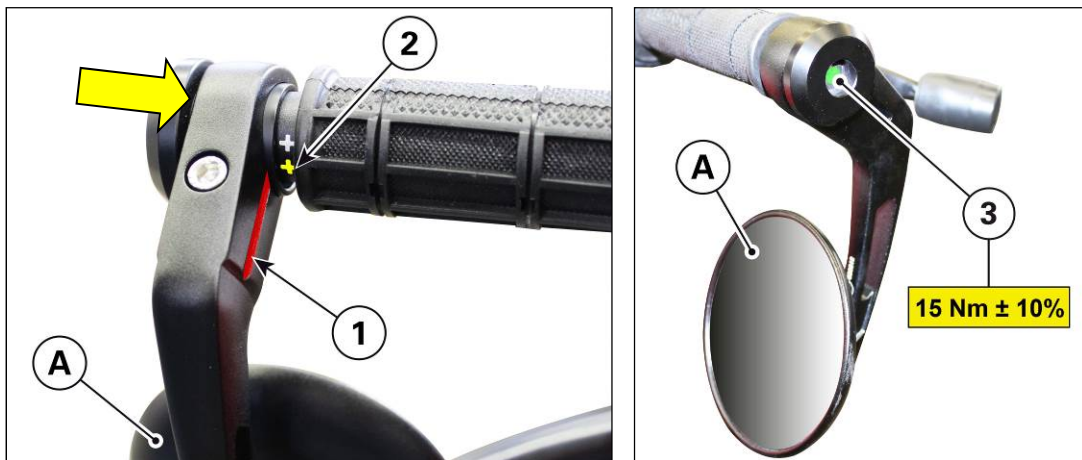
Model Year 2016 Scrambler Italia Independent Introduction  
Models: 2016 Scrambler Italia Independent (all country versions)  
Service Bulletin SRV-SRB-16-016



**LOW configuration**

Install the **rear-view mirror (A)** on the right side of the handlebar by aligning the **slot (1)** on the rear-view mirror with the **lower reference mark (2)** of the handlebar.

Move the rear-view mirror support fully against the handlebar and tighten **screw (3)** to a torque of **15 Nm**  $\pm 10\%$ .

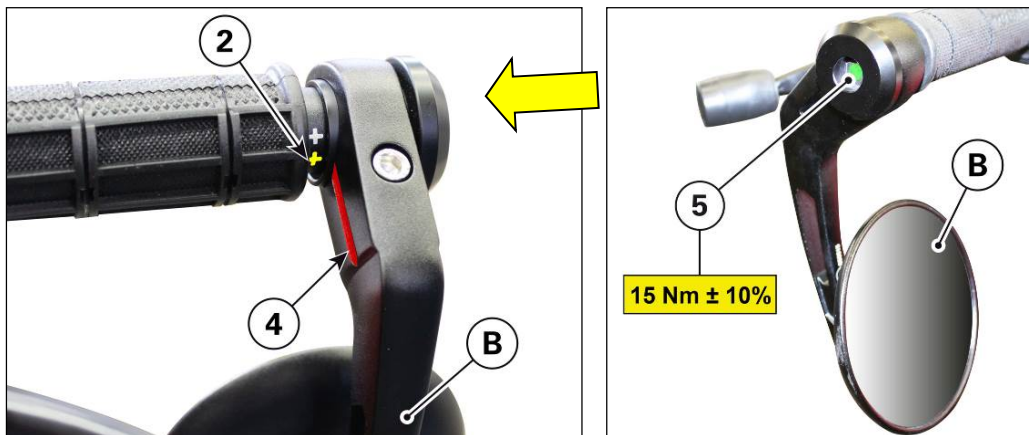




Model Year 2016 Scrambler Italia Independent Introduction  
Models: 2016 Scrambler Italia Independent (all country versions)  
Service Bulletin SRV-SRB-16-016

Install the **rear-view mirror (B)** on the left side of the handlebar by aligning the **slot (4)** on the rear-view mirror with the **lower reference mark (2)** of the handlebar.

Move the rear-view mirror support fully against the handlebar and tighten **screw (5)** to a torque of **15 Nm**  $\pm$  **10%**.



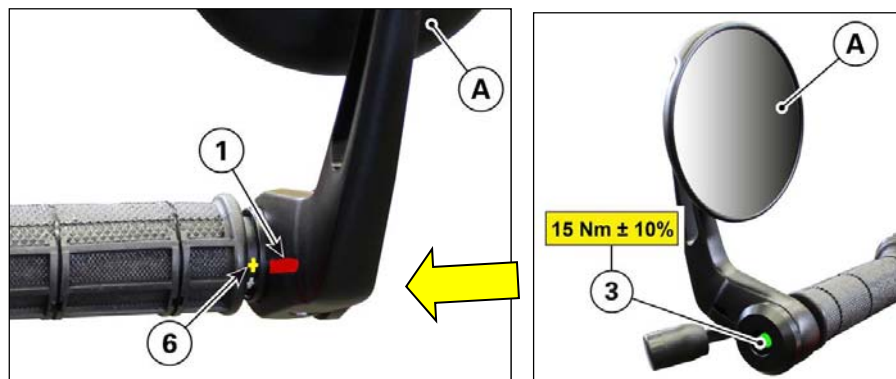
**WARNING**

Ensure that the rear-view mirror position in the LOW configuration is ergonomic for the rider and suitable to one's own riding style. Check that the rear-view mirrors provide for a correct rear and lateral visibility while ensuring a correct steering.

**HIGH configuration**

Install the **rear-view mirror (A)** on the left side of the handlebar by aligning the **slot (1)** on the rear-view mirror with the **upper reference mark (6)** of the handlebar.

Move the rear-view mirror support fully against the handlebar and tighten **screw (3)** to a torque of **15 Nm**  $\pm$  **10%**.

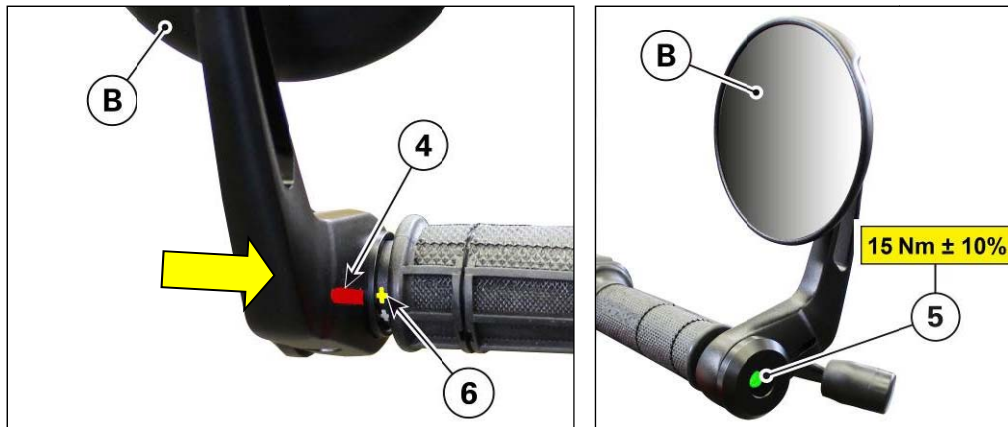




Model Year 2016 Scrambler Italia Independent Introduction  
Models: 2016 Scrambler Italia Independent (all country versions)  
Service Bulletin SRV-SRB-16-016

Install the **rear-view mirror (B)** on the right side of the handlebar by aligning the **slot (4)** on the rear-view mirror with the **upper reference mark (6)** of the handlebar.

Move the rear-view mirror support fully against the handlebar and tighten **screw (5)** to a torque of **15 Nm** **± 10%**.



**NOTE**

For CAL and CDN versions, apply the following stickers on both mirrors:

OBJECTS IN MIRROR ARE  
CLOSER THAN THEY APPEAR  
Code 4301 18016

OBJECTS IN MIRROR ARE  
CLOSER THAN THEY APPEAR  
Code 4301 18016

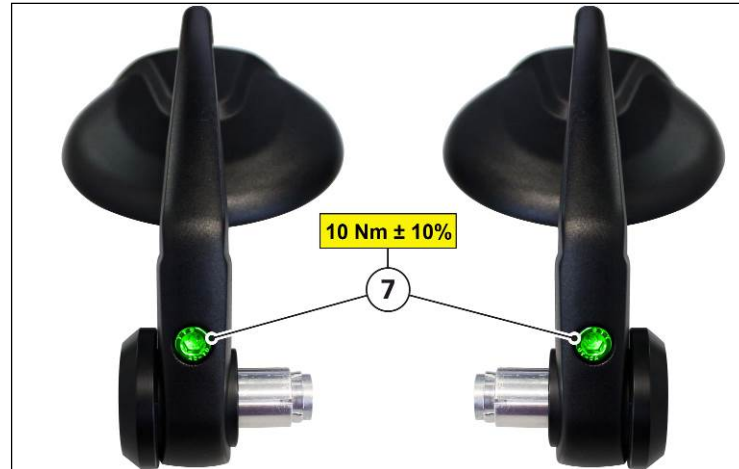


**WARNING**

To adjust the rear-view mirrors do NOT work on screws (7) but loosen the screws of the balancing weights. Before proceeding with the installation, always check that the tightening of the **screws (7)** on both rear-view mirrors is of **10 Nm ± 10%**.



Model Year 2016 Scrambler Italia Independent Introduction  
Models: 2016 Scrambler Italia Independent (all country versions)  
Service Bulletin SRV-SRB-16-016



**Seat cover**

The supplied kit contains the seat cover part no. 91910521A to be delivered to the Customer.

Inform the Customer about the use of the seat cover to be applied when the seat is perfectly dry and when the vehicle is at a standstill.



**Maintenance plan**

The maintenance plan and the operations are indicated in the Scheduled Maintenance Check-List (**Ed.04/16**) attached to this Service Bulletin. Further details are provided in the Service Bulletin SVC-15-003 Model Year 2015 Scrambler Introduction.

For Scrambler Italia Independent the Oil Service 1000 must thus be performed at 1,000 km (600 mi) and then the Desmo Service every 12,000 km (7,500 mi).

**DUCATI**  
**SERVICE**  
**Scheduled Maintenance**





Model Year 2016 Scrambler Italia Independent Introduction  
Models: 2016 Scrambler Italia Independent (all country versions)  
Service Bulletin SRV-SRB-16-016

Please be reminded that during the pre-delivery phase and during all Scheduled Maintenance operations it is always necessary to check the clutch lever free play.



**WARNING**

A wrong adjustment can seriously jeopardize the clutch operation and life.

Remind your Customers to always check the clutch lever free play before using the vehicle as specified in the owner's manual supplied with the bike.

Please be reminded that the technical information contained in this document may undergo changes. We recommend always checking such information against the data provided in the workshop manual and dedicated technical bulletins.

We thank you in advance for your attention and cooperation.

Ducati North America  
Service Department