

## Technical product information

<b>Topic</b>	Mulsanne - Air Suspension Compressor - Control Relay
<b>Market area</b>	Bentley: worldwide (2WBE),Hongkong-Macau (5HK)
<b>Brand</b>	Bentley
<b>Transaction No.</b>	2042362/1
<b>Level</b>	EH
<b>Status</b>	Approval
<b>Release date</b>	

### New customer code

Object of complaint	Complaint type	Position
Running gear -> Shock absorber/suspension control -> Self-levelling suspension Air suspension compressor motor	functionality -> without function / defect	
Running gear -> Shock absorber/suspension control -> Self-levelling suspension	functionality -> cannot be activated	

### New workshop code

Object of complaint	Complaint type	Position
Running gear -> Self-levelling suspension, pitch and roll compensation -> Air suspension compressor -> Air suspension compressor motor	functionality -> does not switch on	
Running gear -> Self-levelling suspension, pitch and roll compensation -> Air suspension compressor -> Air suspension compressor motor	functionality -> does not switch off	
Running gear -> Self-levelling suspension, pitch and roll compensation -> Air suspension compressor -> Air suspension compressor motor	electrics -> damaged contact	

## Vehicle data

### Mulsanne

#### Sales types

Type	MY	Brand	Designation	Engine code	Gearbox code	Final drive code
3Y2*	2011	E		*	*	*
3Y2*	2012	E		*	*	*
3Y2*	2013	E		*	*	*
3Y2*	2014	E		*	*	*
3Y2*	2015	E		*	*	*
3Y2*	2016	E		*	*	*

#### Chassis numbers

Manufacturer	Filler	Type	Filler	MY	Factory	From	To	Prod from	Prod to
SCB	*	*	*	*	C	001000	002634		
SCB	*	*	*	*	C	015209	018999		
SCB	*	*	*	*	C	019680	019941		

## Documents

Document name
master.xml
master.doc

**Customer statement / workshop findings**

Air Suspension Warning Lamp is illuminated on Driver Instrument Panel.  
 It is not possible to raise vehicle ride height with the Air Suspension control.  
 Air Suspension Compressor is energised continuously.

**Technical background**

Air Suspension Compressor Control Relay contacts, may, in certain conditions remain closed when the controlling voltage is removed. In this situation the Air Suspension Compressor will be energised continuously, even if the vehicle ignition system is switched off.

Symptoms of this condition may include internal damage to the Air Suspension Compressor, Warning Lamp illumination or damage to the control relay contacts.

In the event of a continuously running Air Suspension Compressor or if an Air Suspension Compressor is changed due to malfunction, it is recommended that the control relay is changed to a 70 Ampere rating.

**Production change**

Introduction of a 70 Ampere Control relay.

**Measure**

**This Technical Product Information sheet is only applicable to vehicles fitted with an Air Suspension Compressor 40 Ampere control relay - 4H0.951.253.A.**

Remove luggage compartment carpet and cargo platform, refer to Rep. Gr. 70 – Boot Carpet – To Remove and Fit

Remove left hand cargo platform – figure 1.

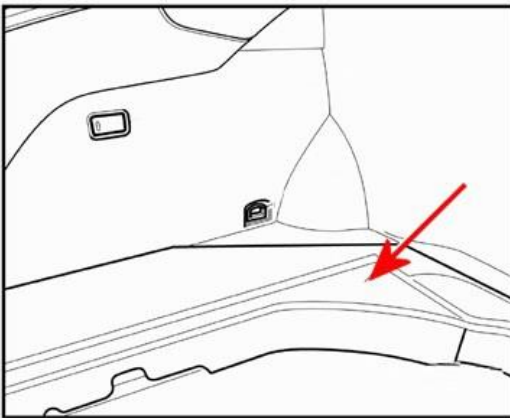


Figure 1  
 The Air Suspension control relay is located in the Left Hand side of the spare wheel well – figure 2.

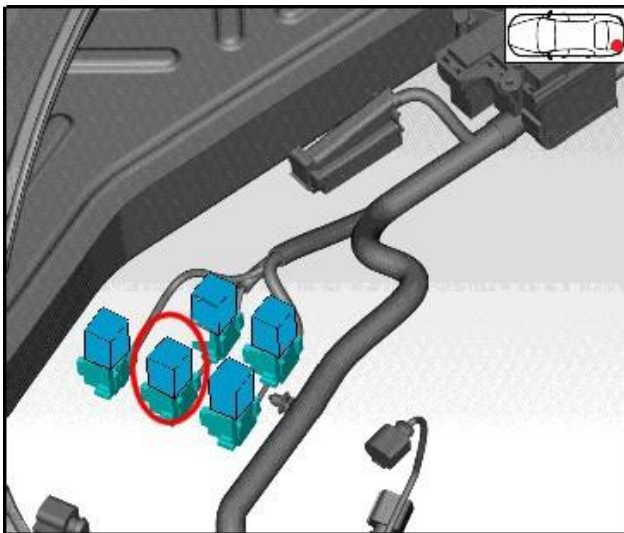


Figure 2.  
 Locate fuse holder D – SD Black – Situated on the left hand side of the spare wheel well – figure 3.



Figure 3.  
Remove fuse 1 - 40A - Adaptive Suspension Compressor Relay - figure 4.

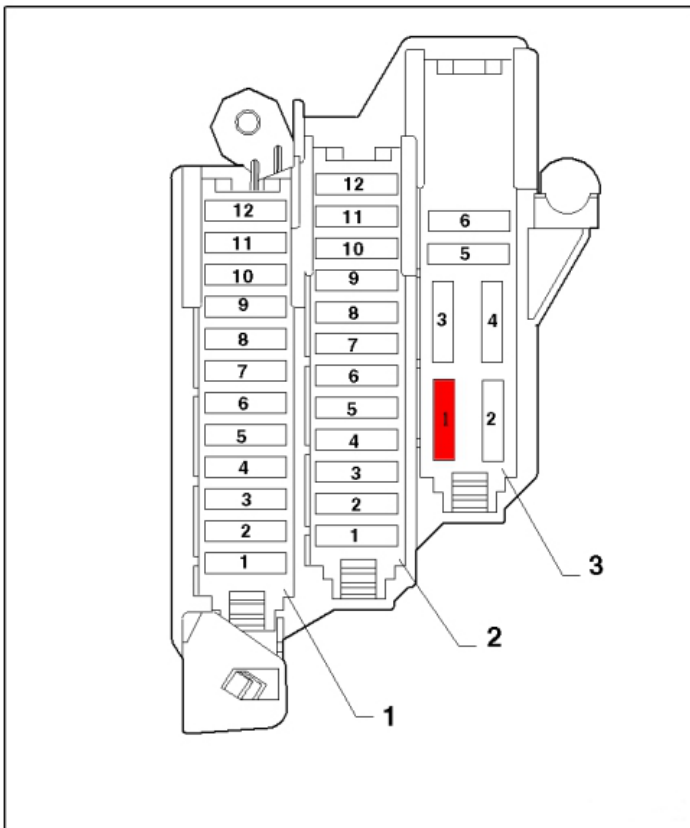


Figure 4.  
Remove the 40 Ampere control relay from the connector block and discard - figure 2.  
Lift the connector block clear of the locating cavity.  
Make note of the wire colours and locations within the connector block.  
Using a terminal extraction tool, remove the Brown 0.5mm<sup>2</sup> cable and terminal from the connector block. Insert the Brown cable into the corresponding cavity of the Green Connector Block.  
Remove the Grey/Red 0.5mm<sup>2</sup> cable and terminal from the connector block. Insert into the corresponding cavity of the Green Connector block.  
Remove the Red/White 4.0mm<sup>2</sup> cable and terminal from the connector block.  
Cut off the terminated end of the Red/White cable as close to the Terminal as possible - figure 5.



Figure 5.

Remove the cable insulator to reveal 7mm of conductor – figure 6.

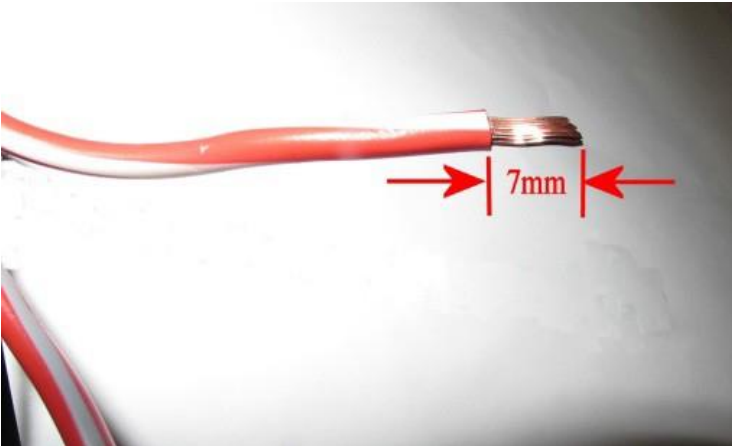


Figure 6.

Crimp terminal N90757201 onto the prepared conductor of the Red/White cable, align the jaws so the crimp tool action is applied to the centre of the terminal ferrule.

Insert the terminal into the corresponding cavity of the Green Connector Block.

Remove the Red/Grey 4.0mm<sup>2</sup> cable from the connector block.

Cut off the terminated end of the Red/Grey cable as close to the terminal as possible.

Remove the cable insulator to reveal 7mm of conductor.

Crimp terminal N90757201 onto the previously prepared conductor of the Red/Grey cable, align the jaw so the crimp tool action is applied to the centre of the terminal ferrule.

Insert the terminal into the corresponding cavity of the Green Connector Block.

Fit the 70 Ampere relay into the terminal block and insert into the correct locating cavity – figure 7.

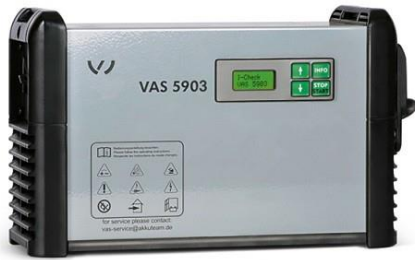


Figure 7.

Replace fuse 1 - 40A – Adaptive Suspension Compressor relay – into fuse holder D – SD Black – figure 4.

#### Check

Ensure a suitable battery charger (VAS5903 or a charger of the same specification) is correctly connected to the vehicle electrical system – refer to Workshop Manual Rep.Gr. 27 – “Charging Battery”



Connect the Bentley approved Diagnostic Tool to the vehicle On Board Diagnostic (OBD) Socket.

From the Diagnostic Tool desktop, launch Off-Board Diagnostic Information System (ODIS)

Ensure the vehicle ignition is switched on.

Select "Start diagnosis"

Select Model and Engine type—ensure "Using Guided Fault Finding" is ticked—figure 8.

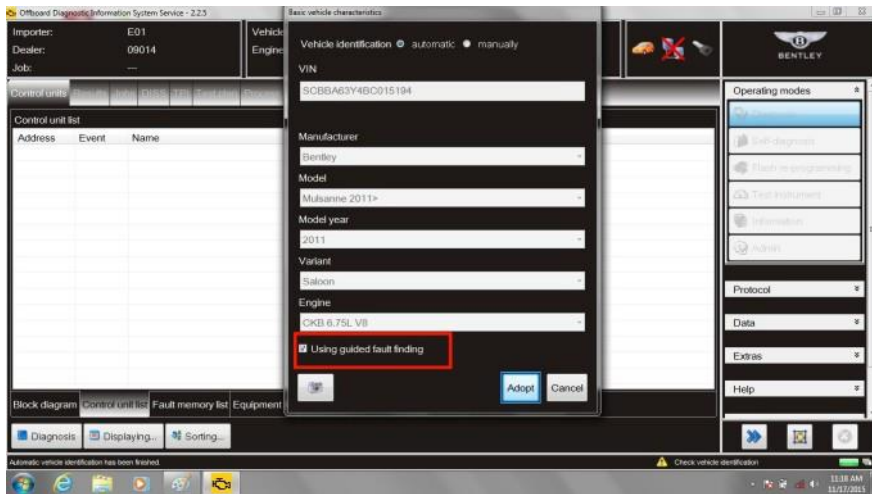


Figure 8

When requested to make an SVM Target/Actual comparison? Select "NO"

Select item A "Control Units" and then right click on item B—"0034 - Ride Height Control"—figure 9.

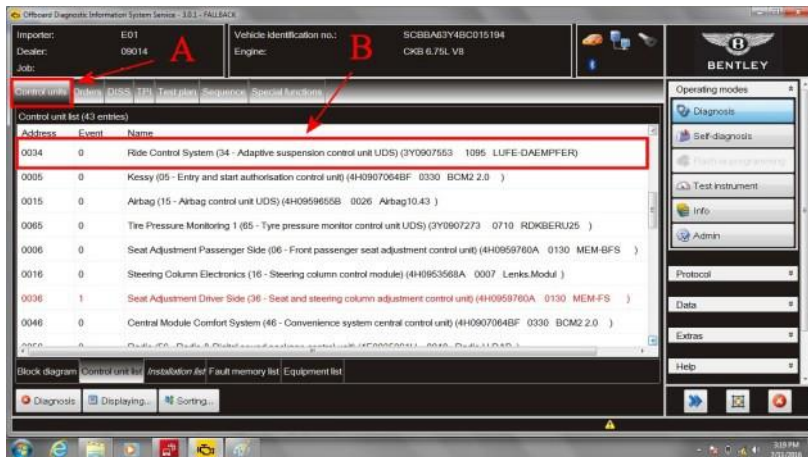


Figure 9

Select "Guided Functions"—figure 10.

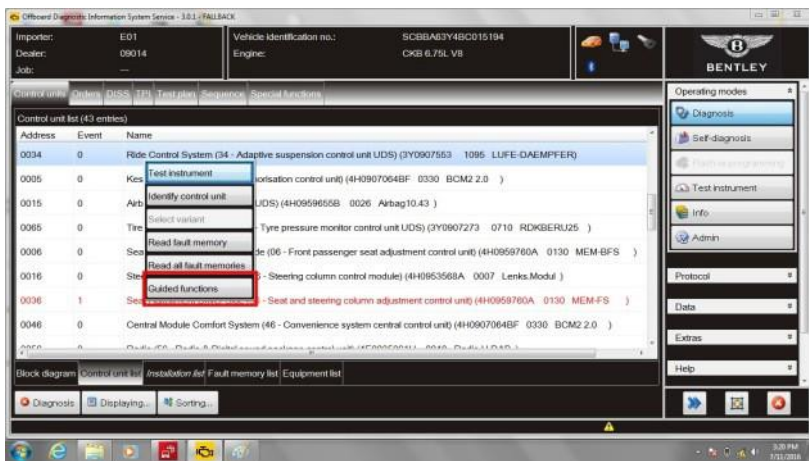


Figure 10  
Select "Output Diagnostics" and Execute – figure 11.

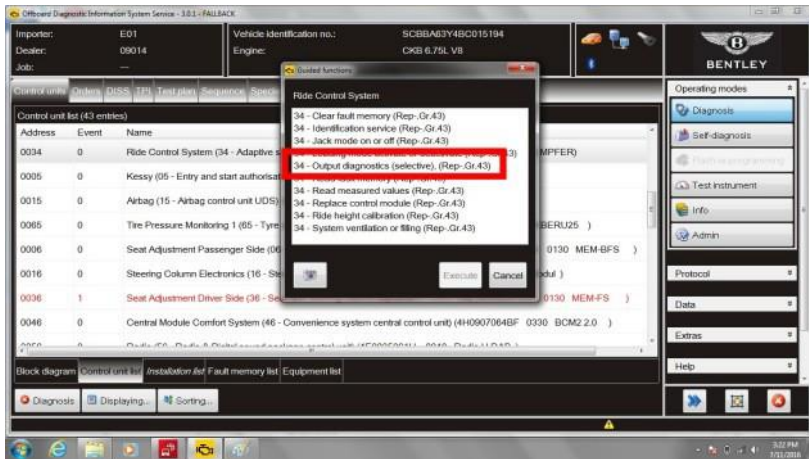


Figure 11  
Select item 3 - Compressor Relay – confirm the Airsuspension Compressor is now running – figure 12

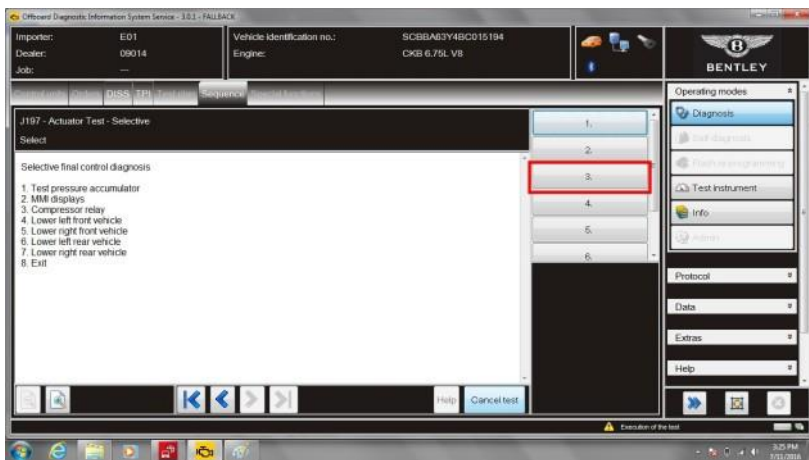


Figure 12.  
Select "Done/Continue" to stop the test.  
Select "Cancel Test" and "Exit Application"  
Re-fit cargo platforms and luggage compartment carpet.

### Warranty accounting instructions

Normal warranty policies apply

Warranty Type 110 or 910  
Labour Operation Code 97 09 41 99 (for RO open date on or before 18 August 2016)  
97 09 41 01 (for RO open date after 18 August 2016)  
Damage Service Number 97 09  
Damage Code 00 55  
Time 90TU

### Parts information

Part Number	Description	Quantity
4H0951253	Relay – 70 Ampere - Green	One
4H0937528C	Connector Block	One
N90757201	Terminal	Two