

Technical product information

Topic	2012 MY onwards Continental family and Flying Spur - Infotainment unit (RNS) – Replacement Process
Market area	Bentley: worldwide (2WBE)
Brand	Bentley
Transaction No.	2030765/3
Level	EH
Status	Approval
Release date	

New customer code

Object of complaint	Complaint type	Position
Information, navigation, communication, entertainment -> Radio, Navigation, MMI, hard drive device functions -> Switch device/MMI on/off -> Start screen	functionality -> without function / defect	
Information, navigation, communication, entertainment -> Radio, Navigation, MMI, hard drive device functions -> Reset device	functionality -> without function / defect	

New workshop code

Object of complaint	Complaint type	Position
Information, navigation, communication, entertainment -> Radio, Navigation, MMI, hard drive device functions -> Software update	control units, services -> software faulty	

Vehicle data

2012MY onwards Continental family and Flying Spur

Sales types

Type	MY	Brand	Designation	Engine code	Gearbox code	Finaldrive code
393*	2012	E		*	*	*
393*	2013	E		*	*	*
393*	2014	E		*	*	*
393*	2015	E		*	*	*
393*	2016	E		*	*	*
393*	2017	E		*	*	*
394*	2012	E		*	*	*
394*	2013	E		*	*	*
394*	2014	E		*	*	*
394*	2015	E		*	*	*
394*	2016	E		*	*	*
394*	2017	E		*	*	*
3W2*	2012	E		*	*	*
3W2*	2013	E		*	*	*
3W7*	2012	E		*	*	*
3W7*	2013	E		*	*	*
3W8*	2012	E		*	*	*
4W2*	2014	E		*	*	*
4W2*	2015	E		*	*	*
4W2*	2016	E		*	*	*
4W2*	2017	E		*	*	*

Chassis numbers

Manufacturer	Filler	Type	Filler	MY	Factory	From	To	Prod from	Prodto
SCB	*	*	*	*	*	040000	999999		

Documents

Document name
master.xml
master.doc

Customer statement / workshop findings

Infotainment system malfunction

Technical background

To enable the investigation into the cause of the fault and thus produce data that will lead to improvements in future systems, Bentley Motors requires the following to be carried out before an Infotainment unit (RNS) is replaced.

Production change

.

Measure

Before replacing any RNS unit you must contact your Bentley Product Support describing the customer fault and your initial findings in detail via DISS, see below.

Do not continue with component replacement until instructed by your Product Support.

Prior to any action being carried out, the dealer must endeavour to confirm that the complaint can be reproduced in the workshop. The following information must be contained on the DISS BAID

- A photograph or video showing the issue or an audio file if noise is related.
- Confirmation that TPI2028463/2 (Infotainment unit (RNS) – Lockup recovery) has been carried out where applicable (applicable prior to VIN SCBBE53W2DC079170)
- Confirmation that TPI2039626 (13.5 to 15 MY Infotainment unit (RNS) – Fault rectification – restoration software) has been carried out where applicable (see TPI for VIN ranges)
- A full diagnostic log before and after the investigation.
- The Serial number (CRIN) of the original RNS unit. Process detailed below.
- If the issue cannot be replicated, then the RNS should be reset. Reset process detailed below. If the issue cannot be replicated after reset, the RNS unit **should not be replaced**.
- If the fault can be replicated then the relevant electrical connections **MUST** be checked for full and correct connectivity.
- In all cases before the RNS is replaced authority **MUST** be gained from Product Support. Failure to follow this process will influence payment under warranty.
- The original RNS unit **MUST** be retained by the dealer or returned to Bentley Motors, in line with current Bentley policy, ready for any parts return request.

Reset procedure

Firstly using the button press reset method and if that is not successful carry out a "fuse pull" reset

.

Note: Ensure a suitable battery charger is correctly connected to the vehicle's electrical system for the duration of both the following procedures



Figure 1

1. Option 1a Carry out a button press reset of the RNS unit
 - a. Insert the key into the ignition switch and turn on the ignition
 - b. Almost simultaneously, but ensuring the two buttons on the left are pressed slightly before, press and hold the three buttons at the top of the infotainment unit screen (see Figure 1)
 - c. Once the three buttons are released the infotainment screen will go blank, and then display the Bentley wings
 - d. Within five minutes the system should have fully re-started indicated by either the radio or media screen operating

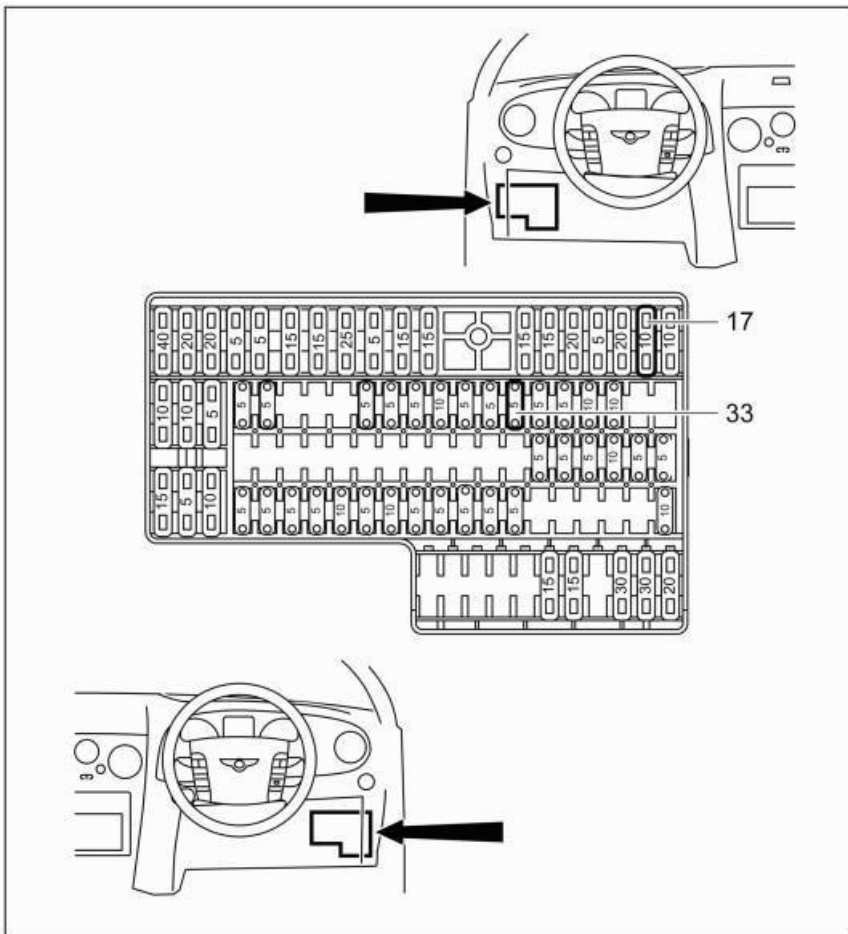


Figure 2

2. Option 1b carry out "fuse pull" reset. Note this should only be performed if option 1a does not recover the unit
 - a. Ensure the ignition is switched off and the key is placed on the top roll
 - b. Remove the driver's kneeroll outer trimmed panel enabling access to the Driver's fascia fusebox. Refer to workshop manual Rep. Gr70- Dashboard panels- Kneeroll assembly- To remove and fit
 - c. Remove fuse 17 (10A) and fuse 33 (5A) from the driver's fascia fusebox. (see Figure 2) Once the fuses are removed they can then be replaced
 - d. Insert the key into the ignition switch and turn on the ignition
 - e. The Bentley wings should be displayed
 - f. Within five minutes the system should have fully re-started indicated by either the radio or media screen operating

To read Serial number (CRIN)

Use Onboard Diagnostic Information System via VAS

1. Start Diagnosis
2. Select Model and Engine type

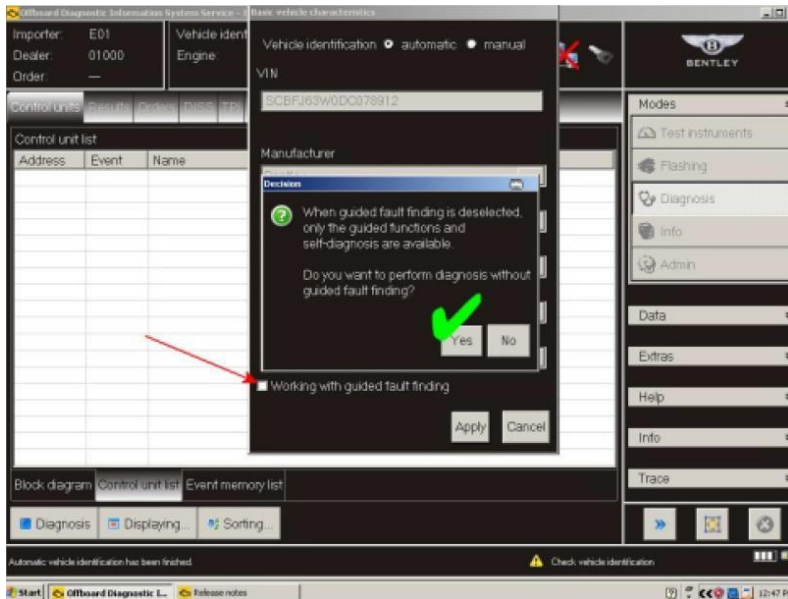


Figure 1

- De select *Working with guided fault finding* (see Figure 1)

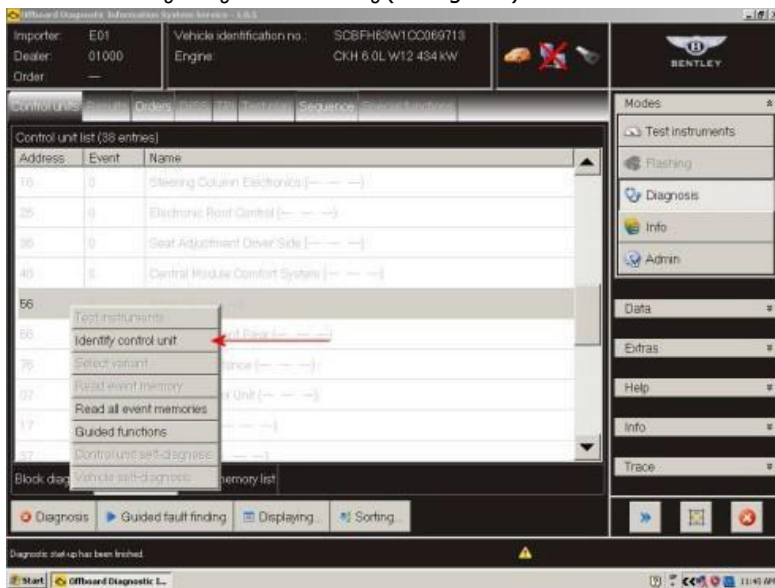


Figure 2

- In Control units select 56 – Radio. Touch, hold then release the selected box to reveal drop down menu then select *Identify control unit* (see Figure 2)

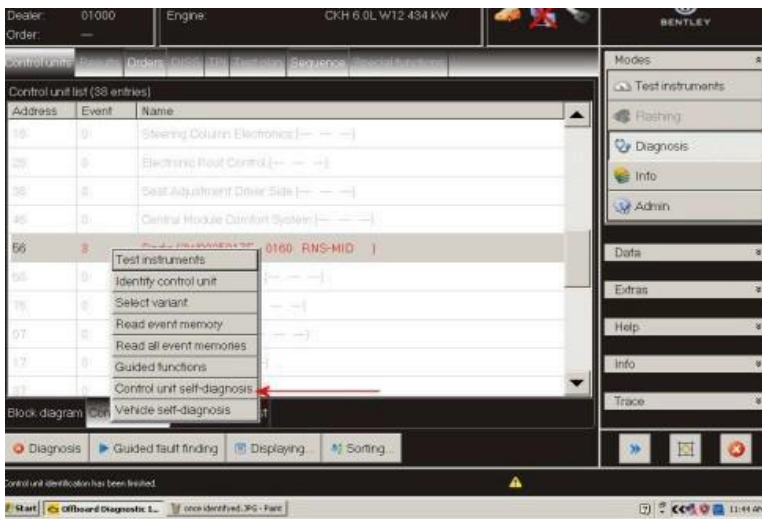


Figure 3

- Once the control module has been identified by the diagnostic program touch, hold then release the selected box again to reveal drop down menu this time select *Control unit self- diagnosis*(see Figure 3)

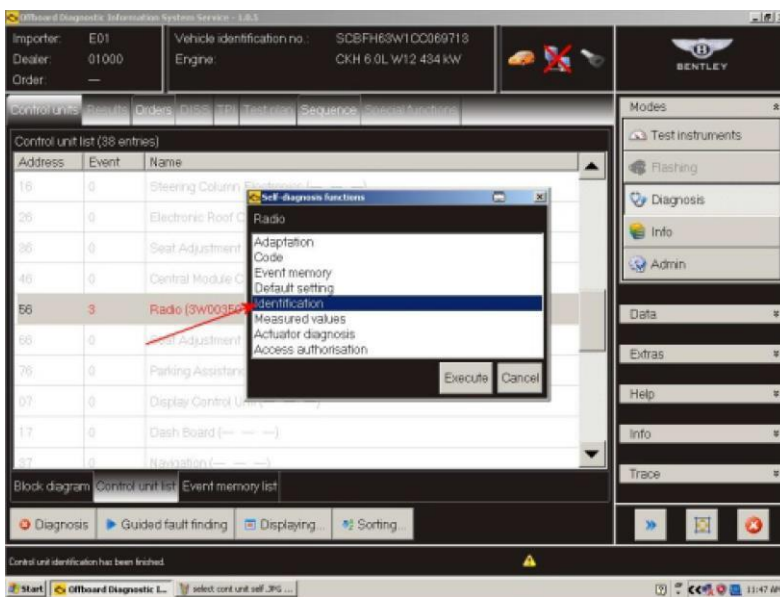


Figure 4

- Select *Identification* and then *Execute* (see Figure 4)

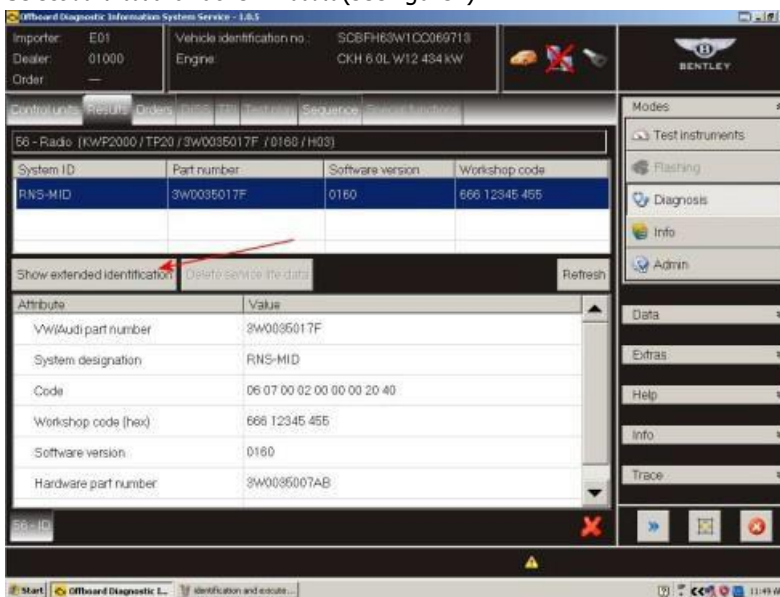


Figure 5

- Select *Show extended identification* (see Figure 5)

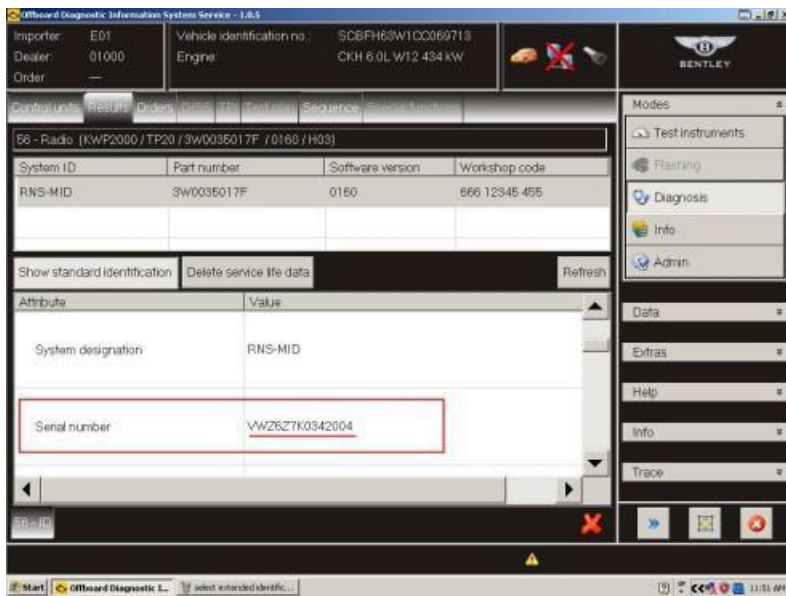


Figure 6

8. Scroll down to display the required 14 digit *Serial number* (CRIN)(see Figure 6)

Warranty accounting instructions

Warranty Type 910 or 110

Labour Operation Code 01 29 00 02 (for New Continental GT – GTC and Flying Spur)
 01 29 00 00 (for Continental Flying Spur and Supersports variants)

Damage Service Number 91 10

Damage Code 02 02

Time 20 TU