



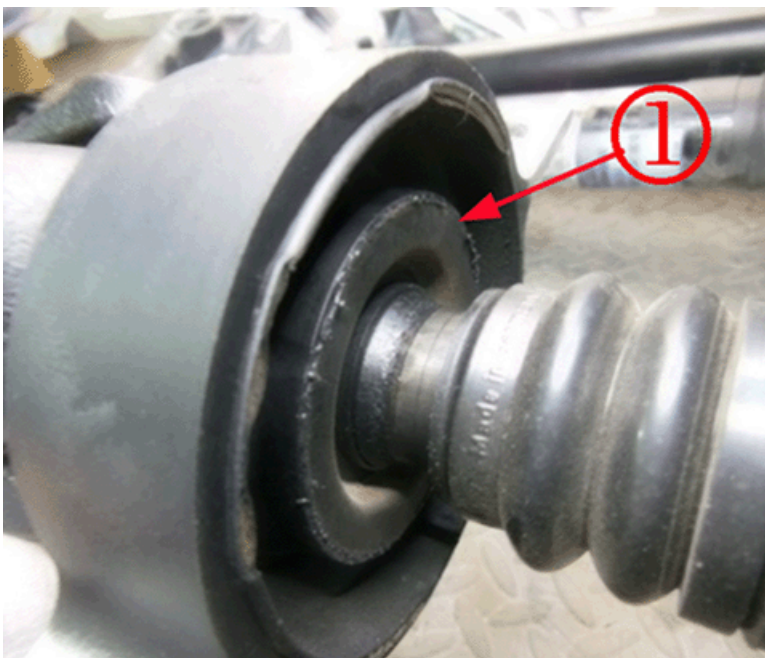
# Service Bulletin

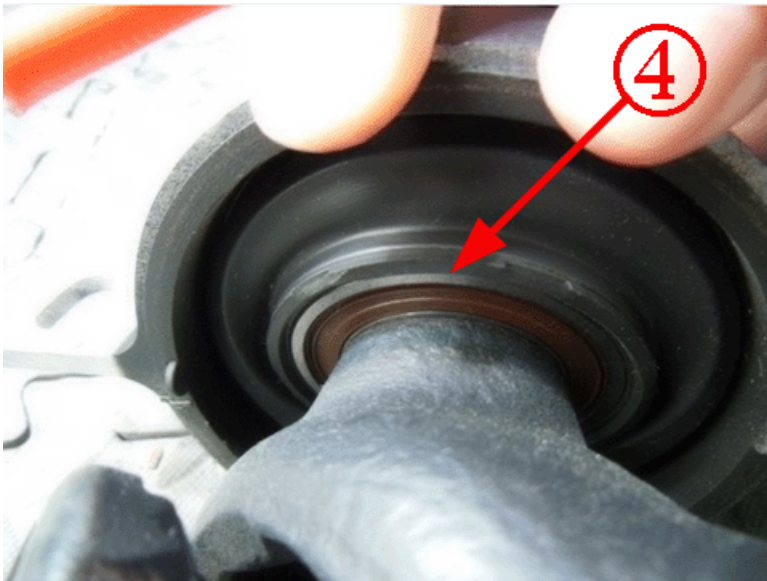
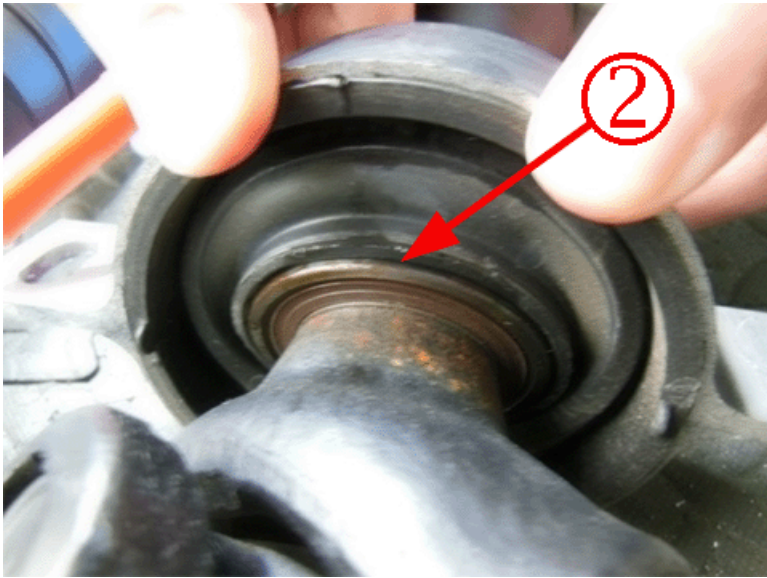
## PRELIMINARY INFORMATION

**Subject:** 2016 Cadillac CT6 with a whine howl noise from under center of vehicle

Brand:	Model:	Model Year:		VIN:		Engine:	Transmission:
		from	to	from	to		
Cadillac	CT6	2016	2017	All	All	All	All

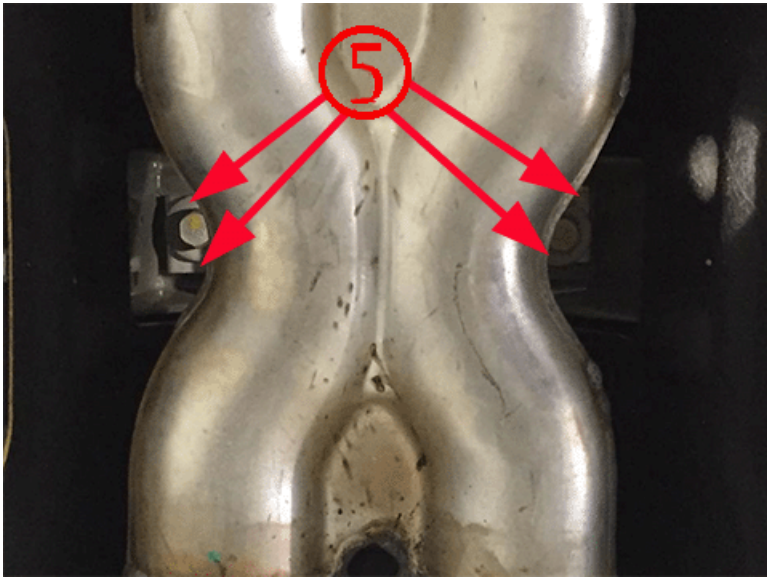
<b>Involved Region or Country</b>	North America
<b>Additional RPO/s:</b>	N/A
<b>Condition</b>	Squeal howl whine noise from under center of vehicle. May be intermittent and more pronounced on acceleration.
<b>Cause</b>	Contact between the center bearing slinger and the rubber bearing support. Inspect the bearing and slinger for the following conditions. Picture 1. showing contact between the slinger and rubber. Picture 2 showing the backside of the bearing as the bearing moving rearward allows the slinger to move rear ward. Picture 3 shows proper clearance between the slinger and rubber. Picture 4 shows proper bearing installation.





### Correction

Replace rear driveshaft assembly. Ensure that when the replacement shaft is installed the bearing support is installed in such a manner to not load the bearing in the rubber mount. Inspect the replacement drive shaft for clearance between the slinger and rubber mount. Clearance should be between .7 and 1 mm (.027-.040 in). See photos below. Picture 5, make sure bearing mount is in the groove on both sides and centered in the bolt holes on the left and right.



**Service Procedure**

See Propeller Shaft Replacement in service information.

**Warranty Information**

Labor Operation	Description	Labor Time
3020410	Propeller Shaft Replacement	1.7

Version	1
---------	---

Modified	
----------	--

GM bulletins are intended for use by professional technicians, NOT a "do-it-yourselfer". They are written to inform these technicians of conditions that may occur on some vehicles, or to provide information that could assist in the proper service of a vehicle. Properly trained technicians have the equipment, tools, safety instructions, and know-how to do a job properly and safely. If a condition is described, DO NOT assume that the bulletin applies to your vehicle, or that your vehicle will have that condition. See your GM dealer for information on whether your vehicle may benefit from the information.



WE SUPPORT VOLUNTARY TECHNICIAN CERTIFICATION