



**No.: 16 CSA- 19**  
September 21, 2016

TO: Service Locations

FROM: Service Systems Development

SUBJECT: **Release of DiagnosticLink® Spanish Language Pack**

## **SUBJECT DETAIL**

On Thursday, September 15, 2016, the Spanish Language Pack for DiagnosticLink® 8.04 Standard and Professional will be available to download from DDCSN. This language pack will allow users to change the primary language to English or Spanish.

**IMPORTANT NOTE:** You must have DiagnosticLink® 8.04 Standard or Professional to use this Language Pack. This update will not function with DiagnosticLink® 8.03 and earlier versions.

In May of 2016, the DiagnosticLink® 8.04 software tool was released to our service network. In order to maintain access to the Detroit Diesel server data, all Master Reprogramming Stations must be kept updated with the current version of DiagnosticLink® software to avoid any interruptions.

Please refer to [16 CSA-6](#) for ordering information and instructions.

## **DOWNLOAD INSTRUCTIONS**

**NOTE:** You must have DiagnosticLink® 8.04 installed on your computer prior to applying this patch.

The patch can be found at the following link:

<https://ddcsn-ddc.freightliner.com/cps/rde/xchg/ddcsn/hs/3448.htm>

If the link does not function, users can follow this path:

**Tools → Electronics → Electronic Tools Updates → DiagnosticLink® 8.x**

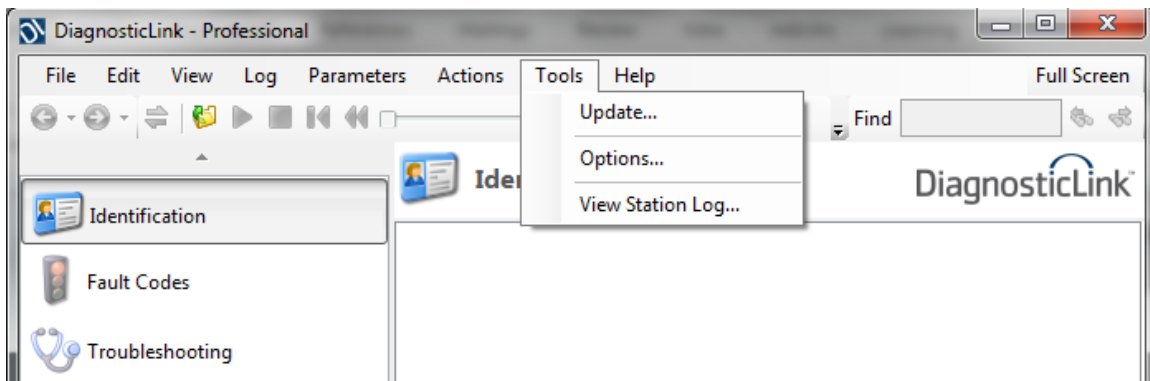
Click on the link for “DiagnosticLink® 8.04 Spanish Language Pack” to download.

Once downloaded, double-click the file to run the installation. Users need to click “Next” to proceed through the installation.

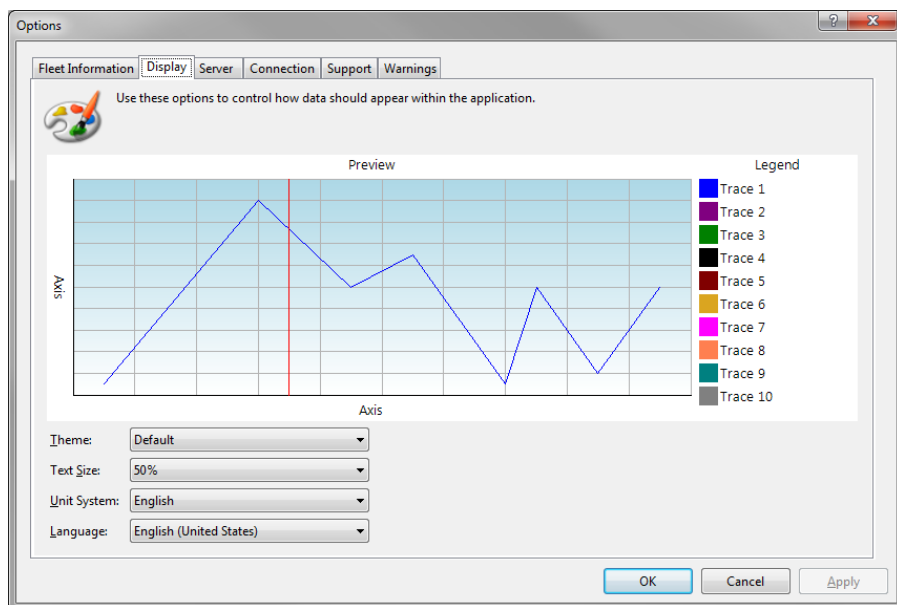
## LANGUAGE OPTION INSTRUCTIONS

To change the tool's language from English to Spanish (or *Spanish to English*):

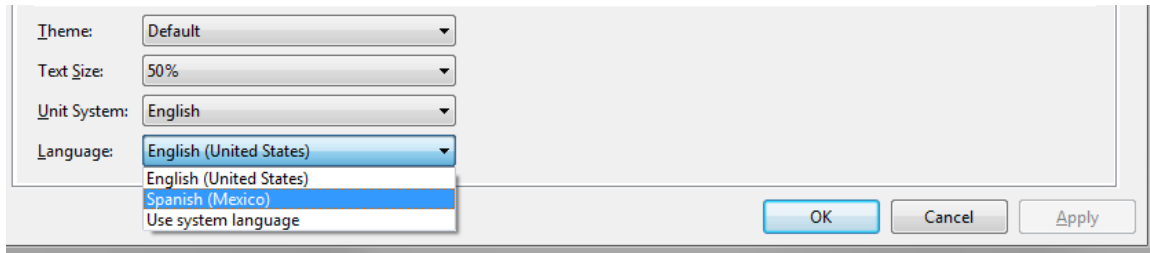
1. Open DiagnosticLink® software.
2. From the **Tools** menu (**Herramientas**), select **Options** (**Opciones**).



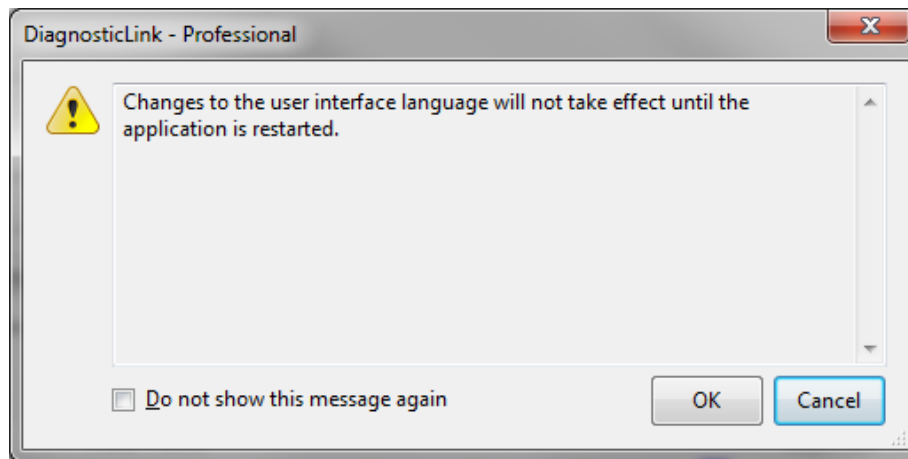
3. Click on the **Display** (**Mostrar**) tab. The following window is displayed:



4. Click on the drop-down menu for **Language (Idioma)** and change the option to **Spanish (Mexico)** or **English (United States)**.



5. Click **OK (Aceptar)**. The user will be prompted with a message stating that the changes will not take place until DiagnosticLink® is restarted. Click **OK (Aceptar)** on the message and close the tool.



6. Open DiagnosticLink®. From this point on, the dialog will be presented in the requested language. The tool language can be switched back using the same steps above.

## CONTACT INFORMATION

Please contact the Detroit Customer Support Center at 800-445-1980 or email [csc.software@daimler.com](mailto:csc.software@daimler.com) if you have any questions.