

WG37 - Reworking Lid for Rear Fuse Box (Workshop Campaign)

Vehicle type: **918 Spyder**

Model Year: **2015**

Subject: **Lid for rear fuse box**

Information: **There is a possibility that moisture can get into the lid of the rear fuse box on the affected vehicles under certain environmental influences.**

This can cause malfunctions in the PDK transmission over the service life of the vehicle. The error message "Gearbox fault" will then be displayed in the instrument cluster and the transmission will switch to the reduced driving programme (limp-home mode).

Remedial Action: Rework lid for rear fuse box.



Information

Before carrying out the work described here, it is important to check whether the vehicle in question is also affected by the campaign specified below:

- WF39 Workshop campaign – Replacing relay for radiator fan

If the vehicle is assigned to the specified campaign, **both** campaigns must be **carried out together if possible**. In this case, **Scope 2** of this campaign must be invoiced.

Any other campaigns assigned to the vehicle must also be carried out.



Information

The vehicle must be checked for defects and damage (damage to paintwork, missing parts, etc.) **each time** it is handed over, transferred or delivered. Confirmation that the vehicle is in good condition or details of any damage to the vehicle must be documented and archived for feedback purposes.

Service Level: **This campaign must be carried out by a Service Level 2 Porsche dealer.**

Service Level 0 Porsche dealers are **not** authorized to carry out this campaign.

In accordance with the service concept for the 918 Spyder, the vehicle must be transferred to the nearest Service Level 2 Porsche dealer in order to carry out this campaign.

In this case, please contact the nearest Service Level 2 Porsche dealer and arrange for the transfer of the vehicle and implementation of the measure.

Information on invoicing for the transfer of the vehicle can be found under ⇒ *Technical Information 'WG3700 Warranty processing'* at the end of this document.

Affected Vehicles: Only the vehicles assigned to the campaign (see also PIWIS Vehicle information). This campaign affects 332 vehicles in North America.

Required Materials



Information

Ordering Teroson 9320 body sealant

Teroson 9320 body sealant **must** be used for reworking the lid. If Teroson 9320 body sealant is already available as a **commercially available expendable item** in your Porsche dealership, this can be used.

If necessary, Teroson 9320 body sealant can be ordered from your expendable items supplier or from parts department using the specified Porsche part number.

For warranty invoicing for body sealant, enter either the Part No. 000 043 207 67 as an own part or the **Part No. WG370000001**, "body sealant " designation as a **sublet part**, depending on the supplier.

Materials:	Part No.	Designation	Qty.
	...	Teroson 9320 body sealant i.e. Part No. 000 043 207 67, commercially available	300 ml cartridge (approx. 30 ml required per vehicle)



Information

Use-by date and storage of body sealant

- After opening body sealant, store it in a dark, dry place at temperatures of 50° F to 77° F (+10° C to +25° C).
- Once the cartridge has been opened, changes can occur to the body sealant over time (e.g. a skin can form). To prevent a skin from forming, seal the cartridge tightly after use.
- If a cartridge that has already been opened and is still good to use is used at a later time for further vehicles and a skin has formed or hardened in the nozzle in the interim period, a new nozzle must be used.
- It is up to the service technician to decide whether or not to allow repeated use of the body sealant.
- If an open cartridge is past its use-by date, dispose of the entire cartridge and use a new cartridge.
- Read and follow the safety and processing instructions for the body sealant.

Required Tools

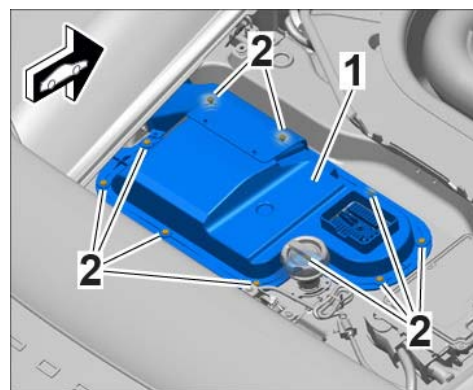
Tools: • **9001 - Socket wrench** for engine cover caps

- Torque wrench, 2 – 10 Nm (1.5 – 7.5 ftlb.), e.g. **V.A.G 1783 - Torque wrench, 2-10 Nm (1.5-7.5 ftlb.)**
- Protective vehicle covers for the 918 - for rear spoiler and side/front engine cover
- Suitable cartridge gun, e.g. **Multi-press telescopic spray gun V.A.G 1761/1** or **V.A.G 1628 - Hand-cartridge gun**

Reworking lid for rear fuse box

Work Procedure: 1 **Preparatory work:**

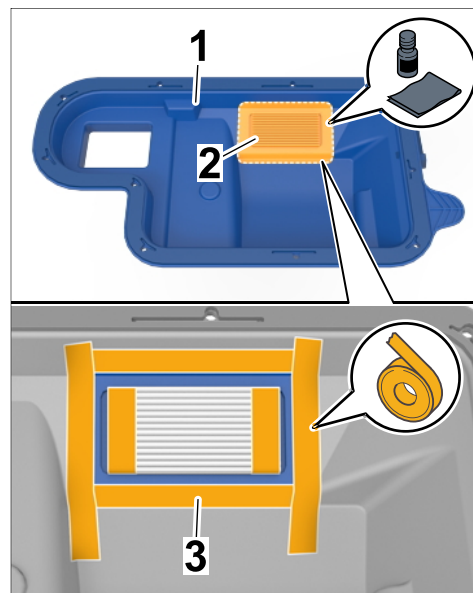
- 1.1 Remove engine cover ⇒ *Workshop Manual '108319 Removing and installing engine cover'*.
- 1.2 Loosen and unscrew fastening screws ⇒ *Removing cover -2-* on the lid for the fuse box ⇒ *Removing cover -1-*.
- 1.3 Remove lid for fuse box ⇒ *Removing cover -1-*.



Removing cover

2 **Rework lid for rear fuse box**

- 2.1 Clean the lid of the fuse box ⇒ *Preparing lid -1-* in the area to be sealed around the heat dissipator ⇒ *Preparing lid -2-* using cleaning solution.
- 2.2 Mask the marked area with adhesive tape ⇒ *Preparing lid -3-*. To do this, affix adhesive strips approx. 10 mm away from the heat dissipator as shown.

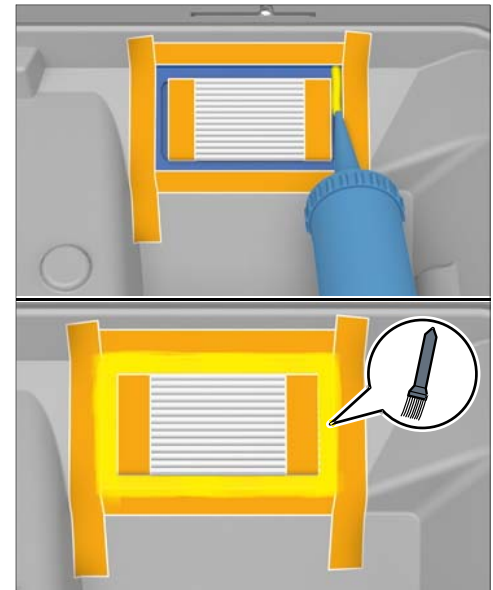


Preparing lid

- 2.3 **Apply body sealant** to the marked area using a suitable applicator gun, e.g. **V.A.G 1761/1 Multi-press telescopic spray gun** or **V.A.G 1628 Hand-cartridge gun** and spread it out with a brush. Make sure that the joint area between the heat dissipator and lid is completely sealed with body sealant. Re-apply body sealant and spread it out again if necessary.

- 2.4 Pull off the adhesive strips you affixed earlier.

3 Concluding work



Sealing lid

NOTICE

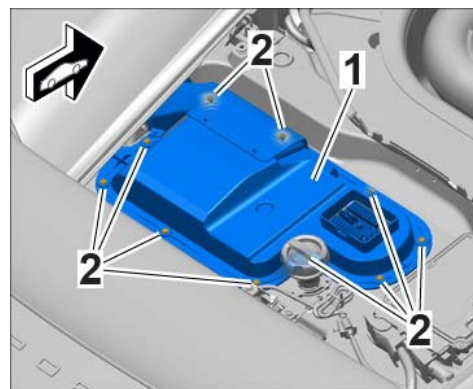
Cover for fuse box and relay carrier fitted incorrectly or damaged

- Water leaking into the fuse box and relay carrier.
- ⇒ Check seal on the cover. If the seal is damaged, the cover must be replaced.
- ⇒ Ensure absolute cleanliness when fitting the cover.
- ⇒ Clean the joint face of the cover on the cross member.
- ⇒ Clean the seal on the cover.
- ⇒ If seal is damaged and needed to be replaced, please create a separate PQIS line and code to part ID "9783" Relay Carrier. Part Number 918.610.112.02

- 3.1 Install lid for fuse box ⇒ *Cover for relay carrier -1-*.
Screw in and tighten fastening screws ⇒ *Cover for relay carrier -2-* uniformly.

Tightening torque 2.5 Nm (2 ftlb.)

- 3.2 Install engine cover ⇒ *Workshop Manual '108319 Removing and installing engine cover'*.
- 3.3 Enter the workshop campaign in the Warranty and Maintenance booklet.



Cover for relay carrier

References: ⇒ *Workshop Manual '108319 Removing and installing engine cover'*

Warranty Processing

Service Level: **This campaign must be carried out by a Service Level 2 Porsche dealer.**

Service Level 0 Porsche dealers are **not** authorized to carry out this campaign.

In accordance with the service concept for the 918 Spyder, the vehicle must be transferred to the nearest Service Level 2 Porsche dealer in order to carry out this campaign.

In this case, Service Level 0 Porsche dealer can invoice the cost items listed below for vehicle acceptance, transporting the vehicle and accepting the vehicle following return transport using the **new vehicle warranty** for the vehicle in accordance with the specifications in the 918 Spyder AfterSales Fact Book 2014:

- Vehicle acceptance 100 TU
- Transporting the vehicle 100 TU
- Acceptance of the vehicle following return transport 50 TU
- Costs for transporting the vehicle to and from the Porsche dealer Amount as per invoice *

* Please document copy of invoice in PQIS

Please invoice the costs by specifying **Damage code C902 97 000** and enter the technical reason by specifying **Coding C9020 9735** in PQIS. Also specify **Campaign WG37** under Comment.

Service Level 2 Porsche dealers must always submit an invoice for the **campaign scope**.

Scope 1: **Reworking lid for rear fuse box (full scope)**

Working time:

Reworking lid for rear fuse box

Labor time: **145 TU**

Includes: Removing and installing engine cover
 Removing and installing lid for fuse box
 Sealing lid for fuse box

Parts required:

000 043 207 67	Sealing compound	0.1 ea. (for warranty invoicing only)
----------------	------------------	--

or

WG370000001*	Sealing compound (Teroson 9320)	1 ea.
--------------	------------------------------------	-------

* For warranty invoicing for Part No. WG370000001, enter "body sealant" designation as a **sublet part**.

⇒ **Damage Code WG37 066 000 1**

Scope 2: **Reworking lid for rear fuse box (combined scope)**

Working time:

Reworking lid for rear fuse box

Labor time: **12 TU**

Includes: Sealing lid for fuse box

Parts required:

000 043 207 67	Sealing compound	0.1 ea. (for warranty invoicing only)
----------------	------------------	--

or

WG370000001*	Sealing compound (Teroson 9320)	1 ea.
--------------	------------------------------------	-------

* For warranty invoicing for Part No. WG370000001, enter "body sealant" designation as a **sublet part**.

Invoicing: => Damage Code WG37 066 000 1

Important Notice: Technical Bulletins issued by Porsche Cars North America, Inc. are intended only for use by professional automotive technicians who have attended Porsche service training courses. They are written to inform those technicians of conditions that may occur on some Porsche vehicles, or to provide information that could assist in the proper servicing of a vehicle. Porsche special tools may be necessary in order to perform certain operations identified in these bulletins. Use of tools and procedures other than those Porsche recommends in these bulletins may be detrimental to the safe operation of your vehicle, and may endanger the people working on it. Properly trained Porsche technicians have the equipment, tools, safety instructions, and know-how to do the job properly and safely. If a particular condition is described, do not assume that the bulletin applies to your vehicle, or that your vehicle will have that condition. See your authorized Porsche Dealer for the latest information about whether a particular technical bulletin applies to your vehicle. Part numbers listed in these bulletins are for reference only. Always check with your authorized Porsche dealer to verify the current and correct part numbers. The work procedures updated electronically in the Porsche PIWIS diagnostic and testing device take precedence and, in the event of a discrepancy, the work procedures in the PIWIS Tester are the ones that must be followed.

© Porsche Cars North America, Inc.

Dealership	Service Manager	Shop Foreman	Service Technician
Distribution	Asst. Manager	Warranty Admin.	Service Technician
Routing			

Dr. Ing. h.c. F. Porsche AG is the owner of numerous trademarks, both registered and unregistered, including without limitation the Porsche Crest®, Porsche®, Boxster®, Carrera®, Cayenne®, Cayman®, Macan®, Panamera®, Speedster®, Spyder®, 918 Spyder®, Tiptronic®, VarioCam®, PCM®, PDK®, 911®, RS®, 4S®, FOUR, UNCOMPROMISED®, and the model numbers and the distinctive shapes of the Porsche automobiles such as, the federally registered 911 and Boxster automobiles. The third party trademarks contained herein are the properties of their respective owners. Porsche Cars North America, Inc. believes the specifications to be correct at the time of printing. Specifications, performance standards, standard equipment, options, and other elements shown are subject to change without notice. Some options may be unavailable when a car is built. Some vehicles may be shown with non-U.S. equipment. The information contained herein is for internal authorized Porsche dealer use only and cannot be copied or distributed. Porsche recommends seat belt usage and observance of traffic laws at all times.

Printed in the USA