



GROUP
ELE

MODEL
Multiple Models
(see table on Pg. 6)

NUMBER
077 (REV 1, 01/29/2016)

DATE
December 2014

TECHNICAL SERVICE BULLETIN

SUBJECT: REAR VIEW CAMERA DIAGNOSIS/REPLACEMENT

★ NOTICE

This bulletin has been revised to include additional information. New/revised sections of this bulletin are indicated by a black bar in the margin area.

This bulletin provides information to diagnose and/or replace the rear view camera of some Kia vehicles (see table on Pg. 6 for specific models and production dates) which may exhibit inadequate image quality from the rear view camera. Possible concerns include:

- Blurry image quality
- Foreign material intrusion (i.e. water, dust, etc.)
- Intermittent operation from the rear view camera
- Missing on-screen parking guidelines/black or blank AVN screen when in reverse

Diagnose the concerns above using the information in this bulletin and, if necessary, replace the rear view camera with an improved part by following the applicable service procedure on KGIS.



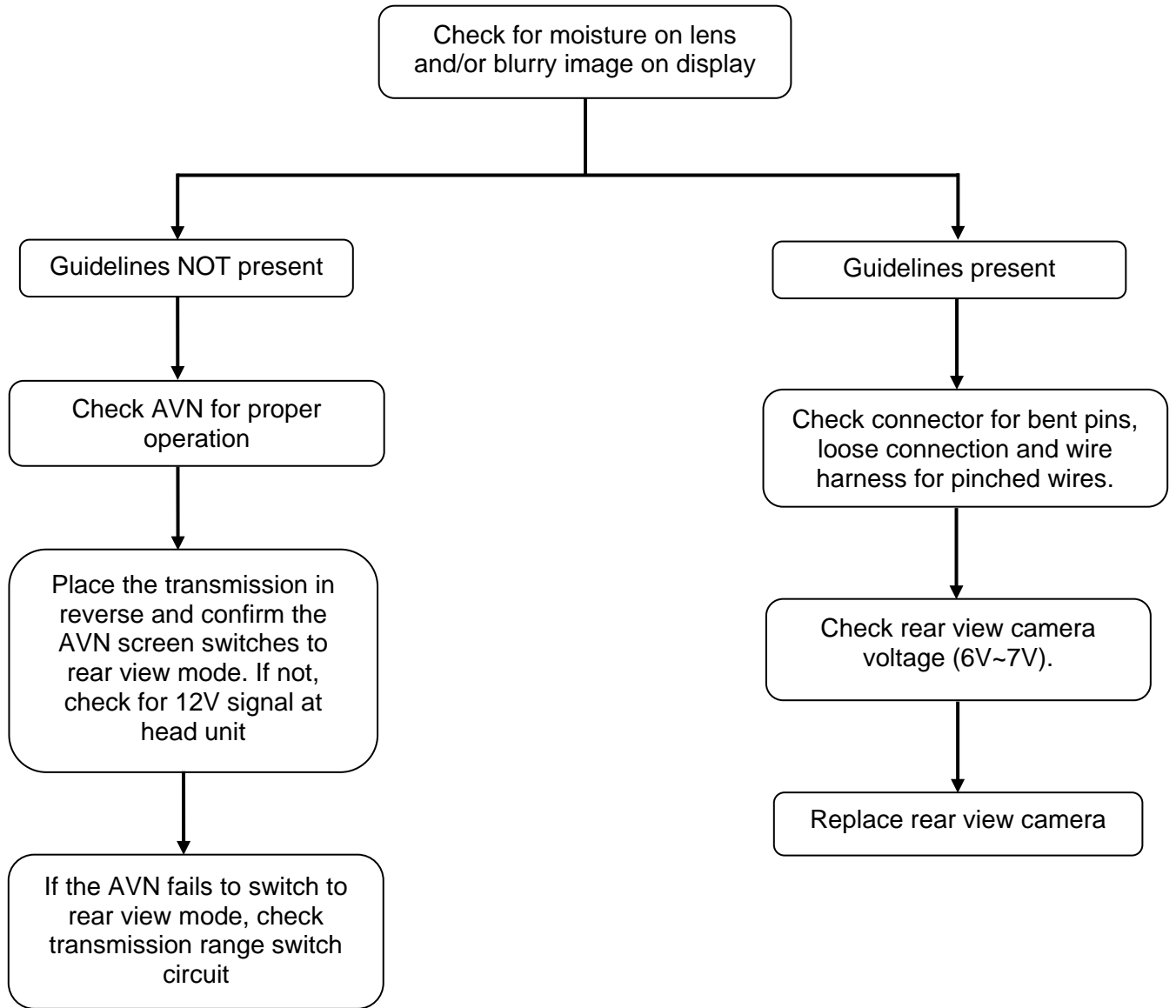
File Under: <Electrical>

Circulate To: General Manager Service Manager Parts Manager

Service Advisors Technicians Body Shop Manager Fleet Repair

SUBJECT: REAR VIEW CAMERA DIAGNOSIS/REPLACEMENT

Diagnostic Flowchart:

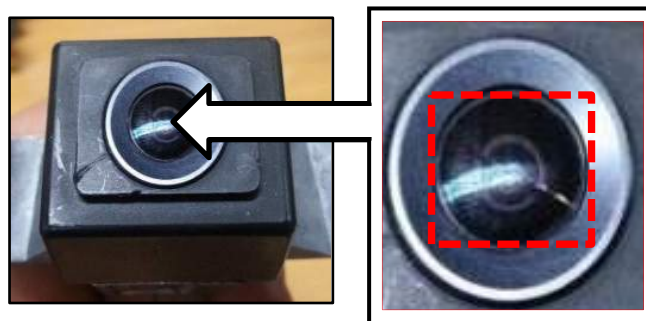


SUBJECT: REAR VIEW CAMERA DIAGNOSIS/REPLACEMENT**Camera Lens Inspection:**

1. Inspect the rear view camera lens for signs of damage due to impact from foreign object. If damage consistent with an impact is found, no further diagnosis is required.

*** NOTICE**

Lens damage due to impact is not considered a warrantable repair.

**Water Intrusion:**

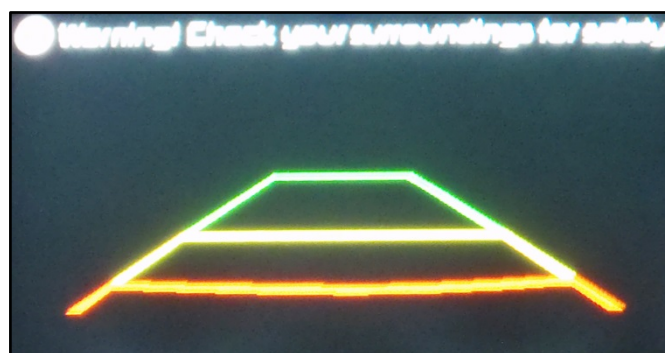
1. Check for blurry image quality on the AVN screen.
2. Inspect the rear view camera lens for signs of condensation forming on the inner surface of the lens and/or possible discoloration or water stains.
3. If water intrusion is evident, replace the rear camera module by referring to the applicable service procedure on KGIS.

**Intermittent Operation:**

1. For customer complaints related to intermittent operation from the rear view camera, perform the following checks:
 - Confirm the parking guidelines are displayed on the AVN screen. If the guidelines are present and the vehicle owner resides in an area with high humidity, snow or rain, replace the rear view camera with an improved part.

*** NOTICE**

For concerns related to intermittent operation, always try to duplicate the customer concern, prior to replacing the rear view camera.



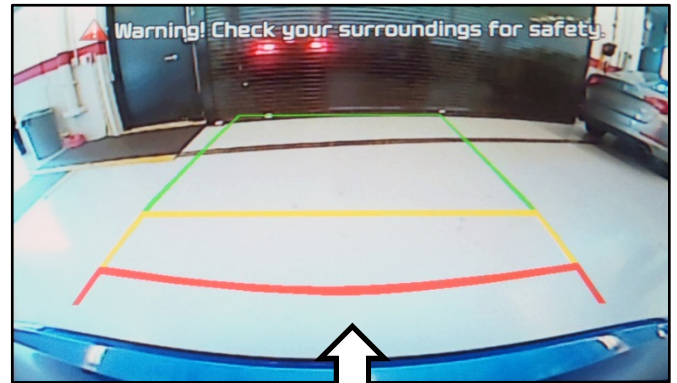
Missing Parking Guide Lines/Black or Blank AVN Screen:

1. If the AVN screen is missing the Parking Guide Lines or displays a black or blank screen, check the AVN system for proper operation:

*** NOTICE**

Missing parking guide lines or a black/blank AVN screen are conditions indicative of an AVN system malfunction, or harness issue related to that system, and not a rear view camera module concern.

2. If the AVN system is functioning properly, perform the following checks:
 - Check the rear view camera wiring harness for pinched or damaged wires.
 - Place the transmission in reverse and confirm the AVN screen switches to rear view mode. If not, check for 12V signal at head unit.
 - If no 12V signal is found at head unit, check the transmission range switch circuit.



SUBJECT: REAR VIEW CAMERA DIAGNOSIS/REPLACEMENT

REQUIRED PART:

Model	Part Name	Part Number
Sorento (XMa)	Rear View Camera	95760 2P202FFF
Sorento (XMa) F/L		95760 2P600FFF
Optima (TF, QF & TF HEV)		95760 2T002FFF
Forte (YD) 5 Dr.		95760 A7700FFF
Forte (YD) 4 Dr.		95760 A7000FFF
Sportage (SL)		95750 3W101FFF 95750 3W121FFF
Cadenza (VG)		95760 E8000FFF
Rio (UB) 5DR		95760 1W310FFF
Rio (UB) 4DR		95760 1W510ABTFF 95760 1W510BEGFF 95760 1W510BLAFF 95760 1W510DBSFF 95760 1W510DYSFF 95760 1W510EU2FF 95760 1W510FDPFF 95760 1W5103DFFF 95760 1W510FBDFF 95760 1W510UDFFF
Soul (AM)		95760 2K1001DFF 95760 2K1001EFF 95760 2K1003DFF 95760 2K1009HFF 95760 2K100A1FF 95760 2K100BD5FF 95760 2K100DT9FF 95760 2K100I2FF 95760 2K100I7FF 95760 2K100IMFF 95760 2K1011EFF 95760 2K1013DFF 95760 2K1019HFF 95760 2K101A1FF 95760 2K101I2FF 95760 2K101I7FF 95760 2K101IMFF 95760 2K1011DFF

SUBJECT:

REAR VIEW CAMERA DIAGNOSIS/REPLACEMENT

AFFECTED VEHICLE PRODUCTION RANGE:

Model/Model Year	*Production Date Range
Sorento (XMa)	October 03, 2011 ~ January 31, 2013
Sorento (XMa) (F/L)	December 17, 2012 ~ July 23, 2014
Optima (TF)	April 03, 2011 ~ August 23, 2013
Optima (QF)	August 09, 2011 ~ September 27, 2013
Optima (TF HEV)	August 09, 2011 ~ December 12, 2013
Forte (YD) 5DR	October 14, 2013 ~ June 15, 2015
Forte (YD) 4DR	February 18, 2013 ~ May 21, 2015
Sportage (SL)	December 1, 2011 ~ April 21, 2015
Cadenza (VG)	February 1, 2013 ~ January 23, 2015
Rio (UB) 5DR	August 16, 2011 ~ May 7, 2015
Rio (UB) 4DR	November 1, 2011 ~ May 7, 2015
Soul (AM)	June 16, 2011 ~ September 30, 2013

***NOTE: Do not use this repair procedure on vehicles outside the specific production date ranges.**

WARRANTY INFORMATION:

N Code = M13 C Code = ZZ3

Claim Type	Causal P/N	Qty.	Repair Description	Labor Op Code	Op Time	Replacement P/N	Qty.
W	95760 2P201 Sorento (XMa)	0	(ELE 077) Rear view camera Inspect & Replace	95760F01	0.6 M/H	Refer to Parts Table (Pg. 5)	1
	95760 2T001 Optima (QF/TF/TF HEV)				0.6 M/H		
	95760 A7000 Forte (YD)				0.3 M/H		
	95750 3W100 Sportage (SL)				0.4 M/H		
	95760 1W310 Rio (UB)				0.4 M/H		
	95760 B2000 Soul (AM)				0.3 M/H		
	95760 E8100 Cadenza (VG)				0.4 M/H		