



Service Bulletin

PRELIMINARY INFORMATION

Subject: Diagnostic Aid: Part Identification For Next Generation Infotainment Components And Correct Labor Codes

Models: 2014-2016 Buick Regal, LaCrosse
2016 Buick Envision
2013-2016 Cadillac ATS, SRX, XTS
2014-2016 Cadillac CTS, ELR
2015-2016 Cadillac Escalade Models
2016 Cadillac CT6
2017 Cadillac XT5
2014-2016 Chevrolet Corvette, Impala, Silverado LD
2015-2016 Chevrolet Colorado, Silverado, Tahoe, Suburban
2016 Chevrolet Camaro, Cruze, Malibu
2016-2017 Chevrolet Volt
2014-2016 GMC Sierra LD
2015-2016 GMC Canyon, Sierra, Yukon Models

This PI was superseded to update Model Years. Please discard PIC6095.

Condition/Concern

The following information will aid dealer personnel in identifying infotainment components on the vehicles listed above to ensure that the correct component is ordered/replaced and the correct labor code is used for warranty submission.

Note: If performing a Bulletin/PI/Field Action, please use any special Labor codes listed in the document.

Recommendation/Instructions

ICS (Integrated Center Stack) -Display/Radio Control Assembly

ICS examples (See figure 1-6)

Labor Code: 3420700 - Use Published Labor Operation Time

Note: Some technicians have replaced the ICS thinking they were replacing the radio. See figure 11 for radio example





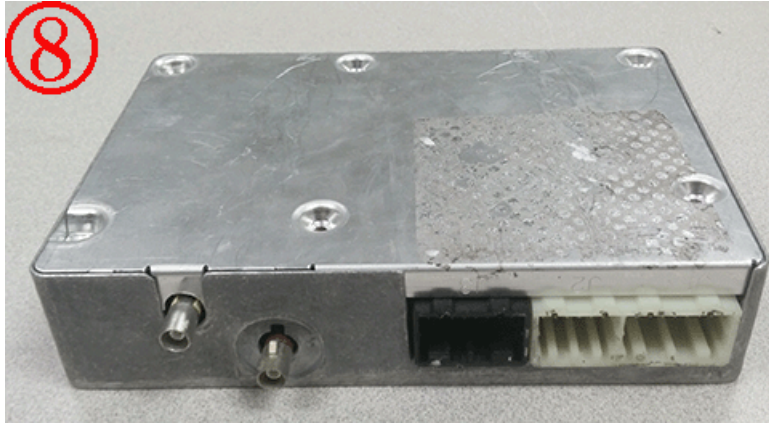


OnStar (Telematics Control Module/VCIM)

Labor Code: 3422790 - Use published Labor Operation time

Examples (See figures 7- 8)

Note: Technicians have replaced VCIM's thinking they were replacing the HMI. Please see figures 9-10 for HMI examples



HMI (Human Machine Interface)

Labor Code: 3421060 - Use published Labor Operation time

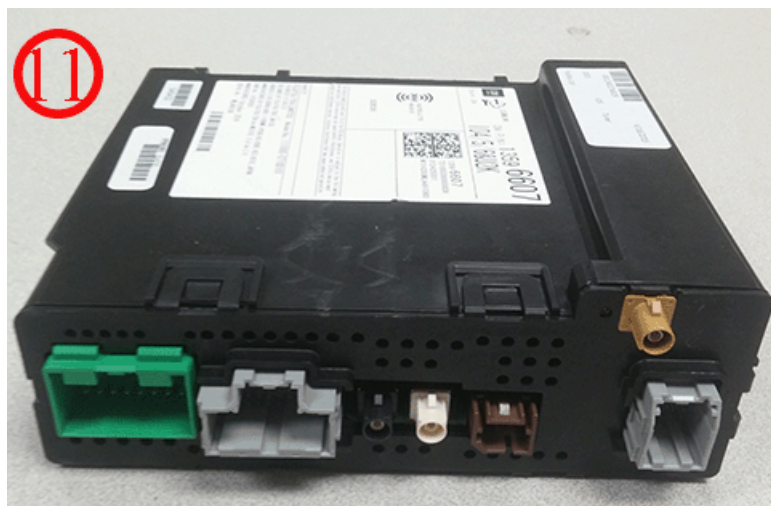
Examples (See figures 9- Non Navigation HMI, 10- Navigation HMI)



Radio/Tuner

Labor Code: 3420840 - Use published Labor Operation time

Example (See figure 11)



Radio Control Assembly (Corvette only)

Labor Code: 3420700 - Use published Labor Operation time

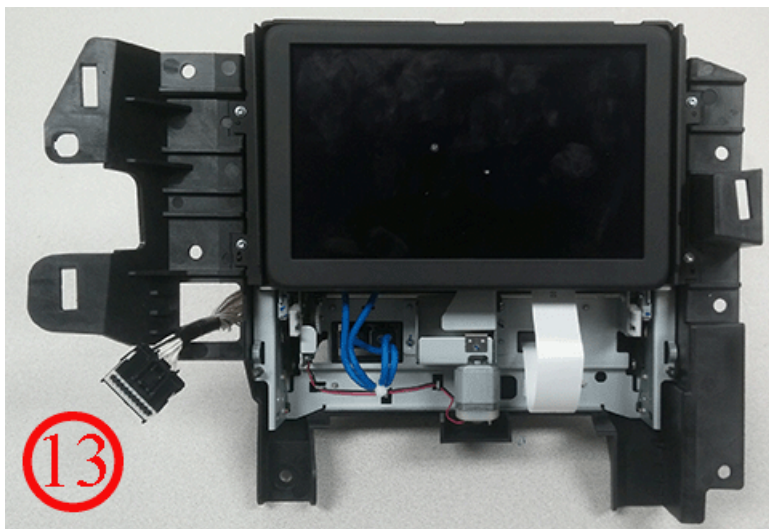
Example (See figure 12)



Driver Information Display (Corvette only)

Labor Code: 3430990 - Use published Labor Operation time

Example (See figure 13)



Additional SI Keywords

CUE install installation intellilink mylink NGI replace replacement

GM bulletins are intended for use by professional technicians, NOT a "do-it-yourselfer". They are written to inform these technicians of conditions that may occur on some vehicles, or to provide information that could assist in the proper service of a vehicle. Properly trained technicians have the equipment, tools, safety instructions, and know-how to do a job properly and safely. If a condition is described, DO NOT assume that the bulletin applies to your vehicle, or that your vehicle will have that condition. See your GM dealer for information on whether your vehicle may benefit from the information.



WE SUPPORT VOLUNTARY TECHNICIAN CERTIFICATION