

# 2016 MX-5, 2016 CX-3, and new 2016 CX-9 BLIND SPOT MONITORING (BSM) SYSTEM CHANGE

The 2016 MX-5, 2016 CX-3 and new 2016 CX-9 BSM system vehicle detection has changed. Although the overall function is the same as previous vehicles, vehicle detection is different.

Below is brief BSM comparison between the 2016 MX-5/CX-3/CX-9 and other Mazda vehicles. For detailed BSM system information, refer to Service Highlights.

**Note:** Do not perform repairs related to system changes.

	Other Mazda Vehicles Equipped With BSM	2016 CX-3, 2016 MX-5 and new 2016 CX-9*
Detection area behind vehicle	7 m (23 ft)	<ul style="list-style-type: none"> <li>50 m (164 ft)</li> <li>Within 5.5 seconds of vehicle approaching from rear</li> </ul>
Vehicle Detection		
BSM Indicator OFF	<ul style="list-style-type: none"> <li>No vehicle detected in the MONITORED AREA</li> <li>High speed difference with vehicle in the MONITORED AREA.</li> </ul>	<ul style="list-style-type: none"> <li>No approaching vehicle in the ALERT AREA</li> <li>Vehicle in the ALERT AREA is cruising at a lower speed</li> </ul>
BSM Indicator ON	<ul style="list-style-type: none"> <li>Vehicle detected in the MONITORED AREA</li> <li>Low or similar speed difference with vehicle in the MONITORED AREA.</li> </ul>	<ul style="list-style-type: none"> <li>Detected approaching vehicle in the ALERT AREA</li> <li>Approaching vehicle reaching the rear of your vehicle within 5.5 seconds</li> <li>Vehicle in the ALERT AREA is cruising at same speed or higher</li> </ul>
BSM Indicator Flashing	<ul style="list-style-type: none"> <li>Turn Signal Switch ON and vehicle detected in the MONITORED AREA</li> <li>Turn Signal Switch ON and low or similar speed difference with vehicle in the MONITORED AREA.</li> </ul>	<ul style="list-style-type: none"> <li>Turn Signal Switch ON and detected approaching vehicle in the ALERT AREA</li> <li>Turn Signal Switch ON and approaching vehicle reaching the rear of your vehicle within 5.5 seconds</li> <li>Turn Signal Switch ON and vehicle in the ALERT AREA is cruising at same speed or higher</li> </ul>
Special Service Tool (SST)	Reflector (*Including new 2016 CX-9) 	Doppler Simulator (2016 MX-5 and 2016 CX-3 only) 

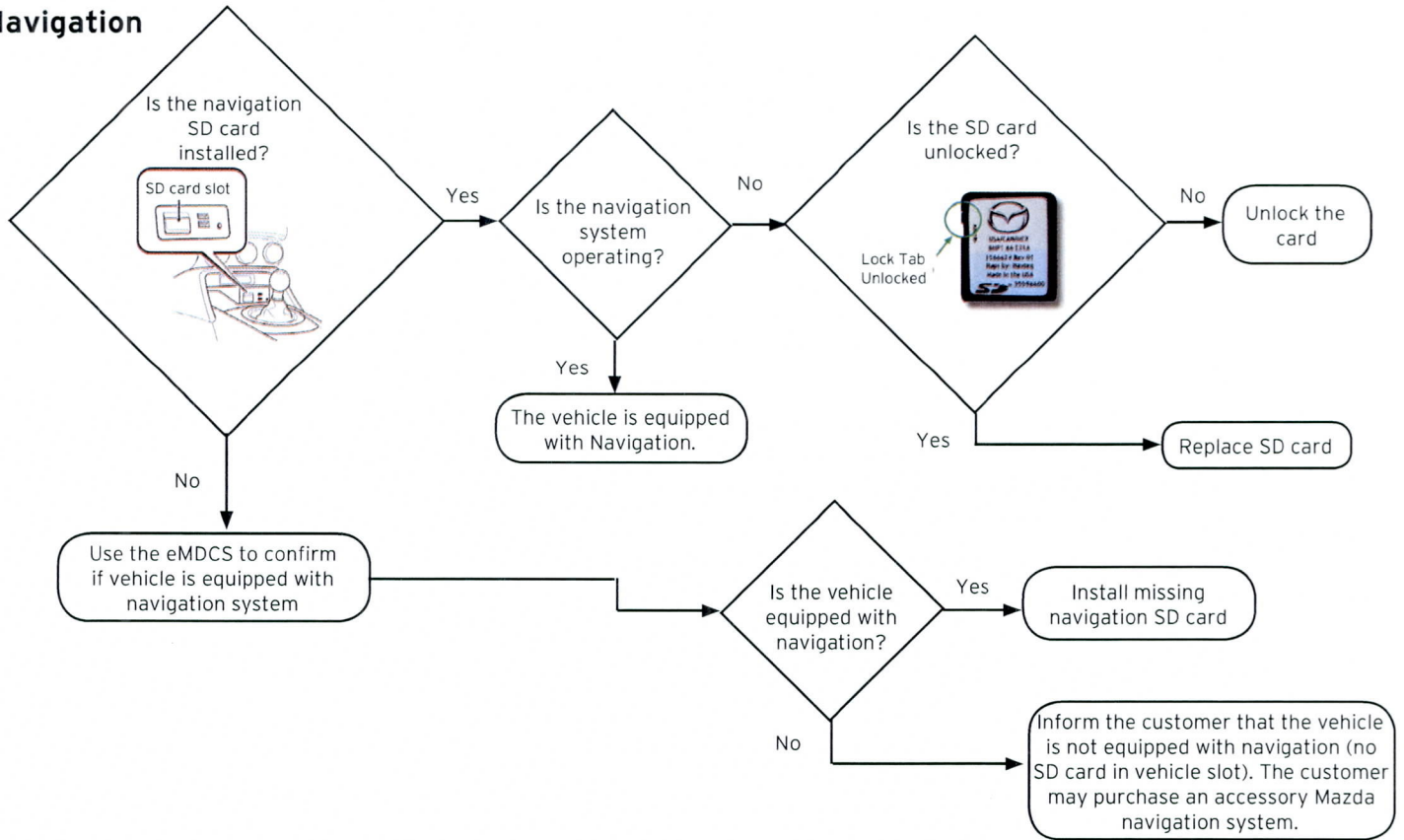
To contribute repair tip ideas, send an e-mail to [mtips@mazdausa.com](mailto:mtips@mazdausa.com) or fax to (949) 442-6599. If we select your repair tip, you will receive 10,000 Reward Performance by Mazda (RPM) points for your efforts. All contributions become property of MNAO, which assumes permission to publish them without further consideration.

# MULTI-MODEL (EQUIPPED WITH MAZDA CONNECT) NAVIGATION AND/OR SIRIUS XM RADIO INOPERATIVE

Most lower trim models equipped with the MAZDA CONNECT Infotainment System are NOT equipped with Navigation or SIRIUS XM Radio. Customers may add a Mazda Navigation system accessory; however, SIRIUS XM radio cannot be added.

Use the information below to determine if customer's vehicle is equipped with Navigation or SIRIUS XM Radio.

## Navigation



## SIRIUS XM Radio

From the MAZDA CONNECT main screen, select Entertainment



Select Audio Sources



- If XM is selectable, the vehicle is equipped with SIRIUS XM Radio
- If XM is not selectable (grayed out), the vehicle is not equipped with SIRIUS XM Radio



### Note:

- SIRIUS XM Radio cannot be added as an accessory.
- If vehicle is equipped with SIRIUS XM Radio, subscription is required.
- You can also use the eMDCS to confirm if vehicle is equipped with SIRIUS XM Radio.

An editorial board comprised of MNAO service staff members generates, collects, and verifies information for this publication. © 2015 Mazda Motor of America, Inc.

To contribute repair tip ideas, send an e-mail to [mtips@mazdausa.com](mailto:mtips@mazdausa.com) or fax to (949) 442-6599. If we select your repair tip, you will receive 10,000 Reward Performance by Mazda (RPM) points for your efforts. All contributions become property of MNAO, which assumes permission to publish them without further consideration