

TECHNICAL BULLETIN
LTB00853NAS1
19 NOV 2015



© Jaguar Land Rover North America, LLC

NOTE: The information in Technical Bulletins is intended for use by trained, professional Technicians with the knowledge, tools, and equipment required to do the job properly and safely. It informs these Technicians of conditions that may occur on some vehicles, or provides information that could assist in proper vehicle service. The procedures should not be performed by 'do-it-yourselfers'. If you are not a Retailer, do not assume that a condition described affects your vehicle. Contact an authorized Land Rover service facility to determine whether this bulletin applies to a specific vehicle.

SECTION: 205-01

"Rattle" Noise From Driveshaft Heat Shield

AFFECTED VEHICLE RANGE:

Discovery Sport (LC)

Model Year: 2016
VIN: 544577-564950
Manufacturing Plant: Halewood
Engine: GTDi 2.0L Petrol

Range Rover Evoque (LV)

Model Year: 2016
VIN: 077912-082727
Manufacturing Plant: Halewood
Engine: GTDi 2.0L Petrol

MARKETS:

NAS

CONDITION SUMMARY:

Situation: A "rattle" noise from the engine compartment or from the underbody area may be evident.

Cause: This may be caused by reduced clearance between the driveshaft-rear and the driveshaft-rear heat shield.

Action: Should a customer express this concern, follow the Service Instruction below.

PARTS:

LR066114 Heat Shield Quantity: 1

TOOLS:

Refer to Workshop Manual for any required special tools.

WARRANTY:

NOTE: Repair procedures are under constant review, and therefore times are subject to change; those quoted here must be taken as guidance only. Always refer to TOPIX to obtain the latest repair time.

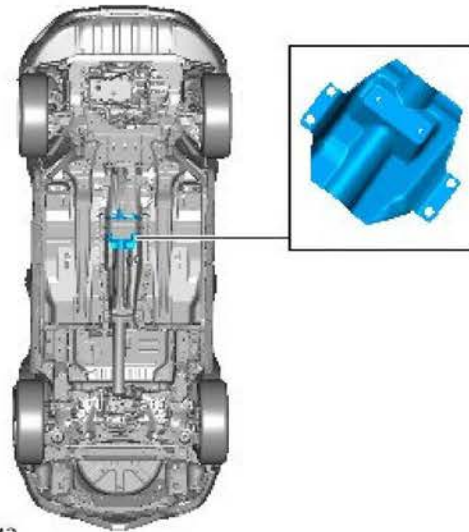
NOTE: DDW requires the use of causal part numbers. Labor only claims must show the causal part number with a quantity of zero.

DESCRIPTION	SRO	TIME (HOURS)	CONDITION CODE	CAUSAL PART
Heat shield - Driveshaft bearing - Front - Renew	30.10.71	0.30	07	LR066114

NOTE: Normal Warranty procedures apply.

COMPONENT LOCATION

1 Component location.



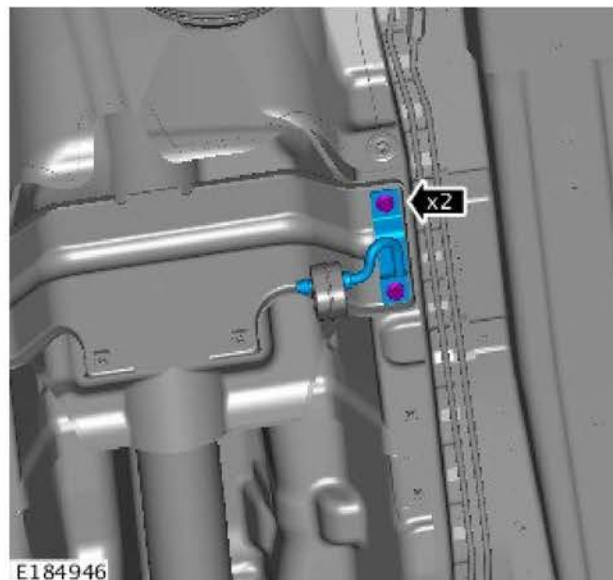
E184942

SERVICE INSTRUCTION:

1 Remove the exhaust system (see TOPIx Workshop Manual section 309-00A: Exhaust System - GTDi 2.0L Petrol/GTDi 2.0L Petrol - SULEV).

2 Remove the middle exhaust bracket.

- Remove the two bolts.
- Remove the middle exhaust bracket.

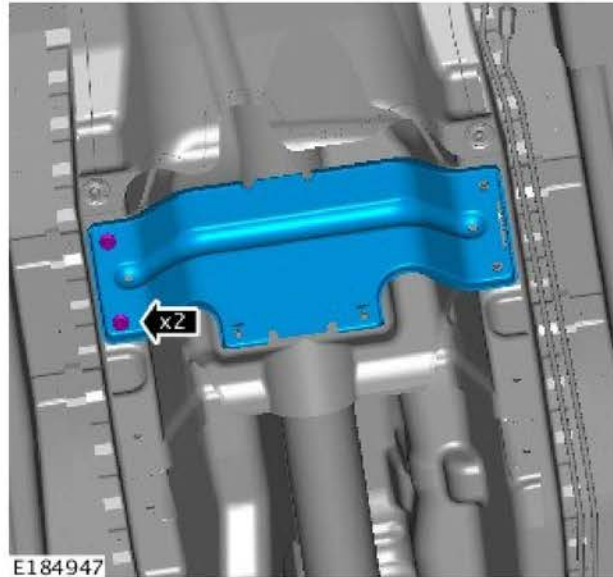


E184946

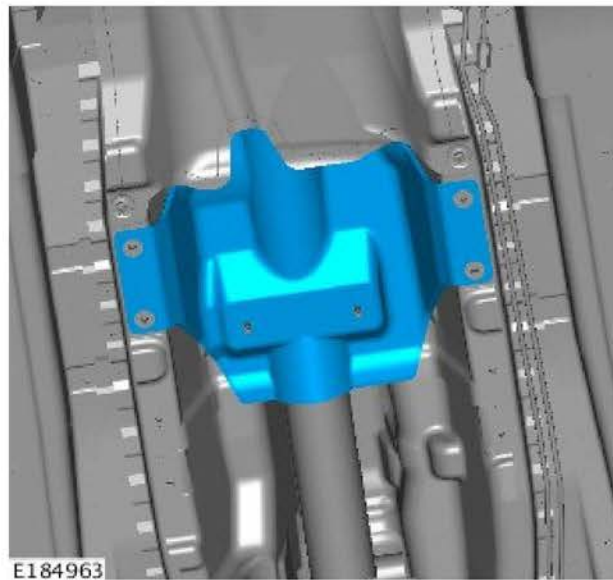
⚠ CAUTION: the driveshaft MUST be supported.

3 Remove the driveshaft bearing mount bracket.

- Remove the two bolts.



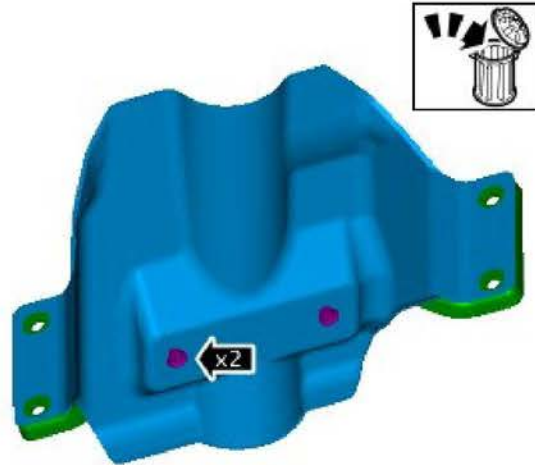
4 Remove the driveshaft heat shield.



5  **NOTE: the heat shields look similar. Discard the original heat shield before installing the new heat shield.**

Remove and discard the driveshaft heat shield.

- Remove the 2 bolts.
- Remove and discard the driveshaft heat shield.

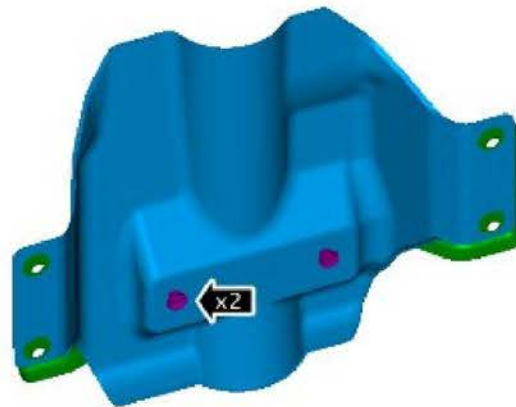


E184991

6  **NOTE: the new heat shield has a yellow dot. Only install a new heat shield.**

Install the new driveshaft heat shield.

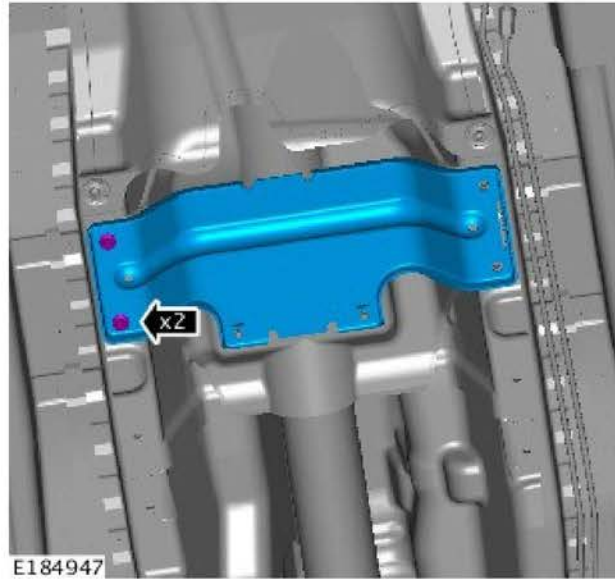
- Install the two bolts.
- Torque: 24 ± 4 Nm.



E185095

7 Install the driveshaft bearing mount bracket.

- Tighten the two bolts.
- Torque: 24 ± 4 Nm.



8 Install the middle exhaust bracket.

- Tighten the two bolts.
- Torque: 24 ± 4 Nm.



9 Install the exhaust system (see TOPIx Workshop Manual section 309-00A: Exhaust System - GTDi 2.0L Petrol/GTDi 2.0L Petrol - SULEV).