

Reference	SSM72131
Models	LR2 / L359 LR4 / L319 Range Rover Evoque / L538
Title	C1 (Door) Latch functionality
Category	Body
Last modified	13-Aug-2015 00:00:00
Symptom	112000 Latches/Locks & Security
Attachments	1Date ID (2).pdf

Content**Issue:**

Door lock functionality [**update with assured VIN's**]

Cause:

JLR Engineering are currently investigating side door latch concerns and therefore request more information to aid investigations.

Known latch issues have now been resolved, and assured VINs for the affected models are:

L319 15MY - A756425

L359 15MY - H432120

L359 15MY - L911856 (Pune)

L538 15MY - H021033

L538 15MY - L920134 (Pune)

Assured date code on Latch – 160614 (160614 = 16/06/2014) - see attachment for reference.

Action:

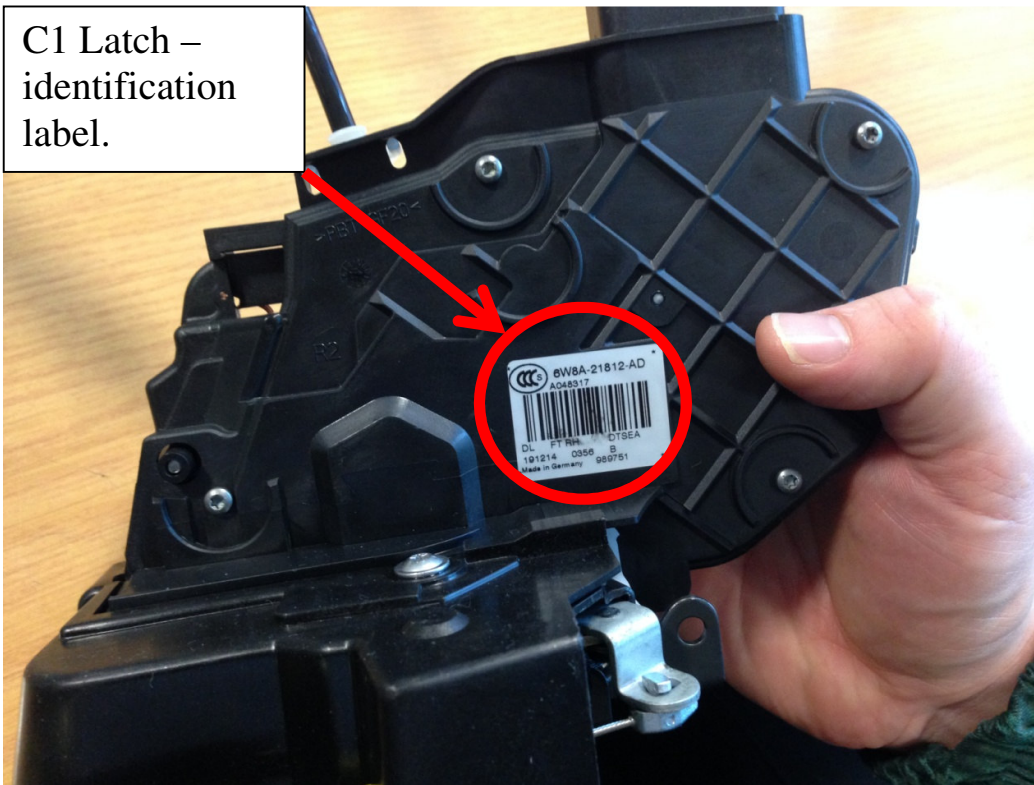
1. To avoid unnecessary latch replacements and determine root cause, follow: -

- SDD (Symptom Driven Diagnostics) procedures within TOPIx section 501-14 (lock latches and entry system diagnosis and testing).

2. Confirm VIN is after/post the assured VIN above and submit an EPQR to aid our investigation.

3. Repeat Repairs – raise an EPQR and confirm date code (see attachment) of old and new units.

C1 Latch –
identification
label.



C1 Latch –
Date code.

