

TECHNICAL BULLETIN  
Q489NAS1  
10 AUG 2015



© Jaguar Land Rover North America, LLC

NOTE: The information in Technical Bulletins is intended for use by trained, professional Technicians with the knowledge, tools, and equipment required to do the job properly and safely. It informs these Technicians of conditions that may occur on some vehicles, or provides information that could assist in proper vehicle service. The procedures should not be performed by 'do-it-yourselfers'. If you are not a Retailer, do not assume that a condition described affects your vehicle. Contact an authorized Land Rover service facility to determine whether this bulletin applies to a specific vehicle.

**SECTION: 501-10**

Service Action: Second Row Seat Squeaks and Rattles

**AFFECTED VEHICLE RANGE:**

**Discovery Sport (LC)**

**Model Year:** 2015-2016  
**VIN:** 501001-518432  
**Manufacturing Plant:** Halewood

**MARKETS:**

NAS

**CONDITION SUMMARY:**

**Situation:** An issue has been identified on a limited number of 2015-2016 model year Discovery Sport (L550) vehicles where the forward 4 X M10 fixings (inboard and outboard) and the rearward (inboard only) fixings of the second row seats may have residual torque below the minimum specified limit.

**Action:** Retailers are required to **HOLD** only affected new vehicles that are within your control and refrain from releasing the vehicles for **new vehicle sale** pending completion of the Service Instruction detailed in this Technical Bulletin. Unsold vehicles should have this performed as part of the Pre-Delivery Inspection (PDI) process but **must** have it completed prior to vehicle handover to the customer. Affected vehicles already in the hands of customers should be updated at the next available opportunity.

**PARTS:**



**NOTE: when ordering parts, order only the expected percentage demand of parts identified.**

| DESCRIPTION  | PART No./SUNDRY CODE | QTY./VALUE | EXPECTED % of VEHICLES REQUIRING PARTS |
|--|----------------------|------------|--|
| Non-water-based Polytetrafluoroethylene (PTFE) spray lubricant (locally sourced) | ZZZ001               | \$1.61*    | 100                                    |

\* - an allowance has been provided to cover the cost of the locally sourced lubricant spray; 1 can of lubricant spray is sufficient to perform repairs to 10-15 vehicles.

**SPECIAL TOOLS:**

Refer to Workshop Manual/Service Instruction for any required tools.

**WARRANTY:**



**NOTE: check DDW to ensure that a vehicle is affected by this program prior to undertaking any rework action.**

At the time of confirming a booking for vehicle repair, ensure that all outstanding Recalls and Service Actions are identified to ensure the correct parts are available and adequate workshop time is allocated for repairs to be completed at one visit.

Warranty claims must be submitted quoting Program Code '**Q489**' together with the relevant Option Code from the table. SRO and parts information is included for information only. The Option Code(s) that allows for the drive in / drive out allowance can only be claimed if the vehicle is brought back into the workshop for this action alone to be undertaken.

Repair procedures are under constant review and therefore times / prices are subject to change; those quoted here must be taken as guidance only. Refer to TOPIx to obtain the latest repair time.

This program is valid for a limited time only. Warranty claims with a repair date prior to the **31 July 2017** closure date must be submitted for payment within 30 calendar days of completion of the repair.

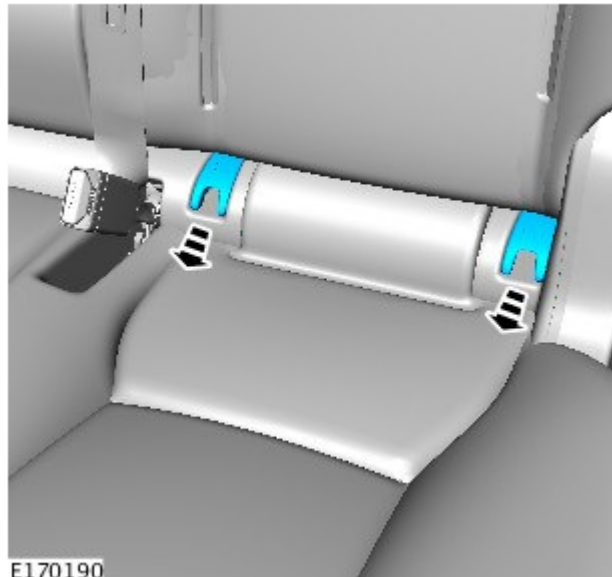
| PROGRAM CODE | OPTION CODE | DESCRIPTION  | SRO                  | TIME (HOURS) | PARTS/SUNDRY CODE | QTY./VALUE   |
|--------------|-------------|--|----------------------|--------------|-------------------|--------------|
| Q489         | B           | Re-torque seat and inboard fixings, apply lubricant spray to location pin on each seat                       | 05.10.20             | 0.20         | ZZZ001            | \$1.61*      |
| Q489         | C           | Re-torque seat and inboard fixings, apply lubricant spray to location pin on each seat<br>Drive in/drive out | 05.10.20<br>02.02.02 | 0.20<br>0.20 | ZZZ001<br>-       | \$1.61*<br>- |

\* - an allowance has been provided to cover the cost of the locally sourced lubricant spray.

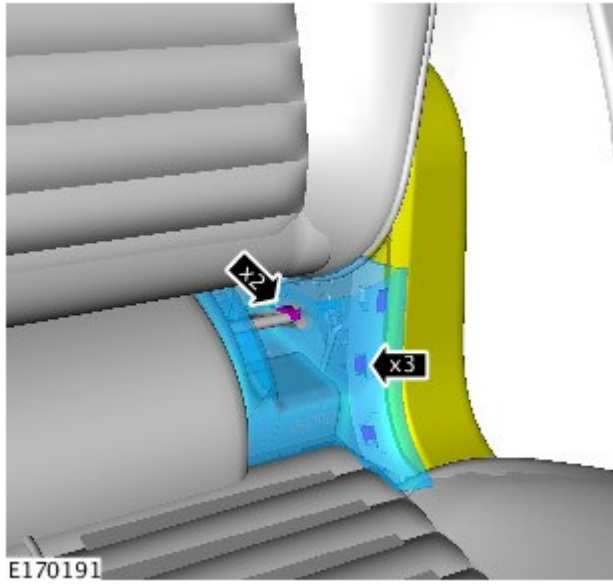
Normal Warranty policies and procedures apply.

### **SERVICE INSTRUCTION:**

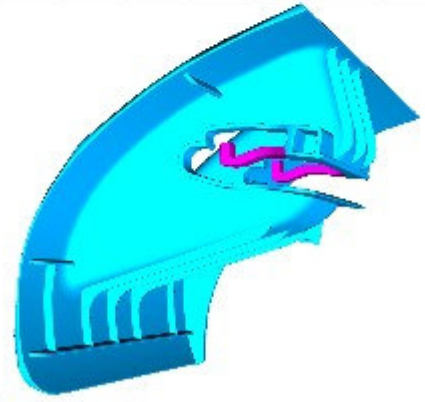
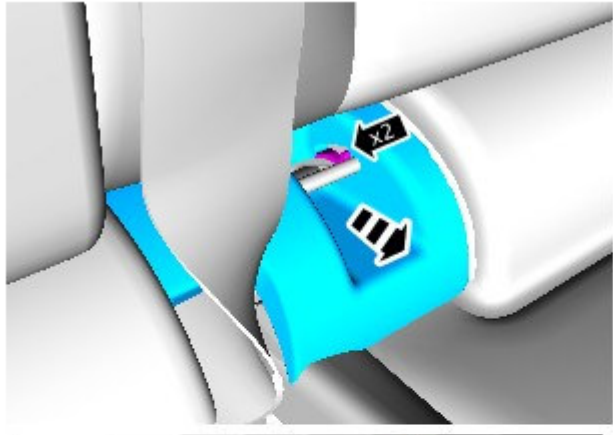
1. Release the second row seat ISOFIX (LATCH) trim.



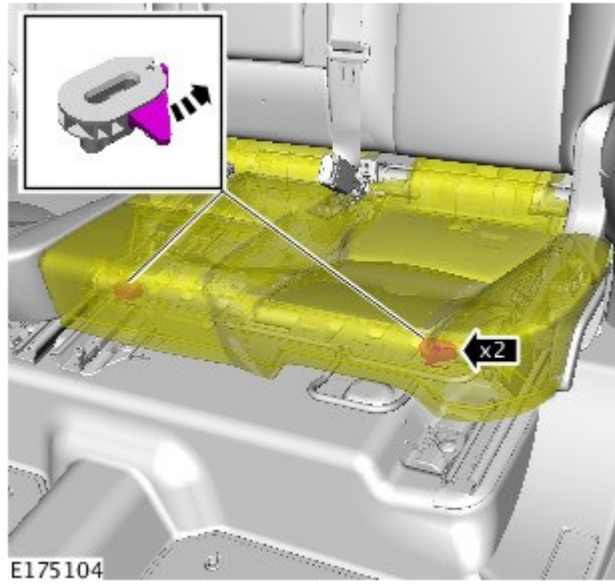
- 2. Remove the second row seat ISOFIX (LATCH) cover.



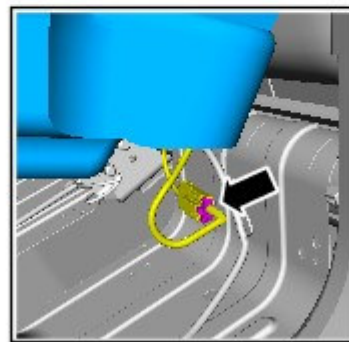
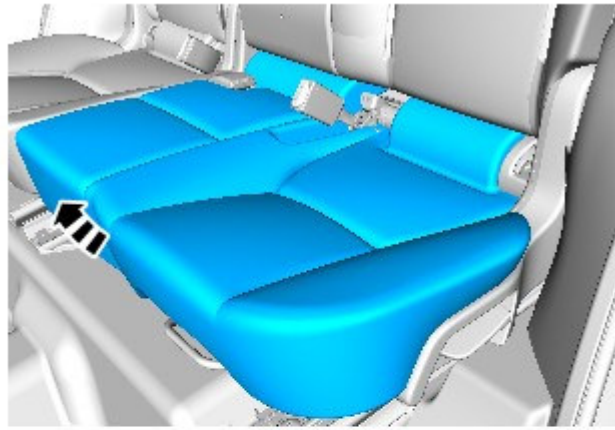
- 3. Remove the second row seat ISOFIX (LATCH) cover.



4. Release the second row seat cushion release clips.



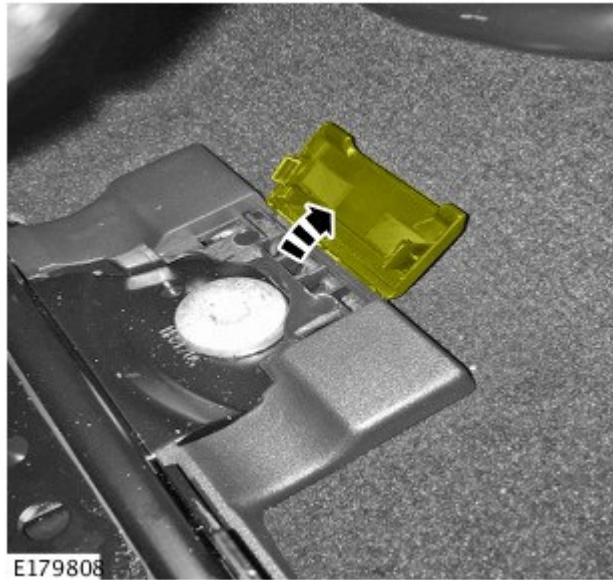
5. Remove the second row seat cushion for access.
  - If fitted, disconnect the electrical connector.



E175136

6.  **NOTE: front left-hand (LH) fixing cover shown; front right-hand (RH) fixing cover similar.**

Open the second row seat front left-hand (LH) and right-hand (RH) fixing covers.



7.  **NOTE: LH shown; RH similar.**

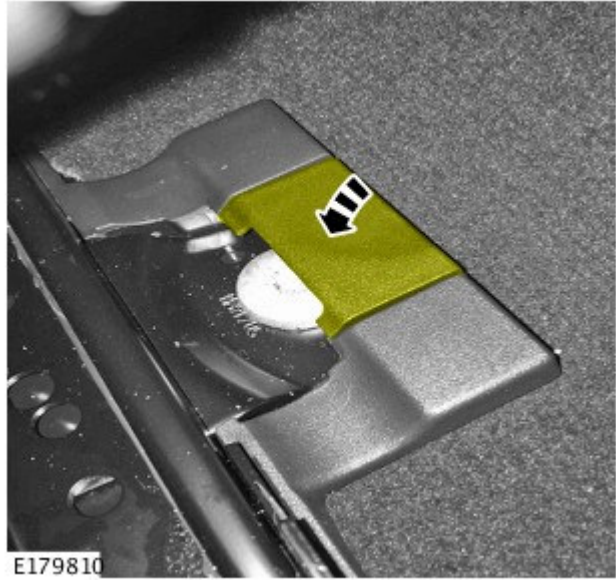
Tighten the four second row seat front fixings.

- Torque: 50 Nm



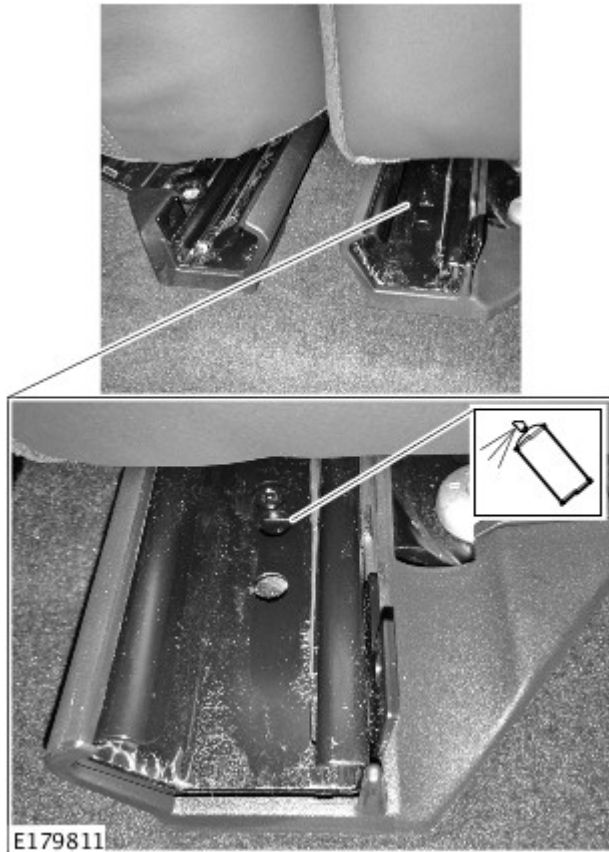
8.  **NOTE: front LH fixing cover shown; front RH fixing cover similar.**

Close the second row seat front LH and RH fixing covers.



9.  **NOTE: lubricant spray must be applied through the rearmost hole ONLY.**

Apply lubricant spray to the location pins on each second row seat track.



10. Lift the lever and fold the second row seat back.



E179812

11. Slide the second row seat fully forward.



E179813

12. Remove the second row seat rear LH and RH inboard fixing covers.

13.  **NOTE: rear LH inboard fixing shown; rear RH inboard fixing similar.**

Tighten the second row seat rear LH and RH inboard fixings.

- Torque: 50 Nm



**14.** Install the second row seat rear LH and RH inboard fixing covers.

**15.** To install, reverse steps 1-5.