

Subject: VEHICLE SPEED DOES NOT INCREASE WITH ENGINE SPEED AND ATX DOES NOT SHIFT UP OR DOWN	Bulletin No: 05-006/15
	Last Issued: 11/30/2015

BULLETIN NOTE

- This bulletin supersedes the previous bulletins 05-002/14 issued on 02/14/14 and 05-008/13 issued on 12/12/13. The APPLICABLE MODEL(S)/VINS has been revised.
- Changes are noted below in Red beside the change bar.

APPLICABLE MODEL(S)/VINS

- 2012-2013 Mazda3 (with SKYACTIV A/T)
- 2013 CX-5 (with SKYACTIV A/T)

DESCRIPTION

Some vehicles may exhibit the ATX fail-safe function working with the following symptoms:

- The vehicle speed does not increase with engine speed
- The ATX does not shift up or down as expected

The condition may not always be able to be reproduced and DTCs may not be stored when the vehicle is brought in. Foreign material (iron particles in the ATF) may enter the ATX valve body and cause a temporary malfunction of the valve body and/or sensor (ATX fail-safe function activated). The fail-safe function is canceled without DTCs recorded if the malfunction goes away and does not occur again at the next drive cycle.

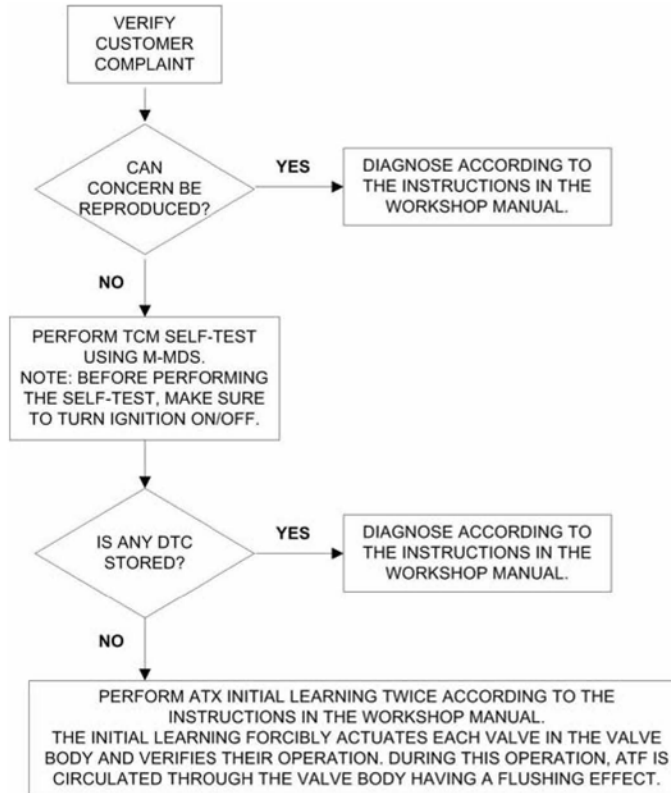
Fail-safe function operation:

- If a technical fault is detected in the ATX by the malfunction detection function, the fail-safe function limits the ATX control (inhibits some gears or shift down functions).
- Even in case of an ATX malfunction, the fail-safe function allows minimum vehicle driveability.

Customers having this concern should have their vehicle inspected/repaired using the following repair procedure.

REPAIR PROCEDURE

1. Verify customer concern.
2. Follow the chart to determine course of action.



3. Verify repair.

WARRANTY INFORMATION

NOTE:

- This warranty information applies only to verified customer complaints on vehicles eligible for warranty repair.
- This repair will be covered under Mazda's Powertrain Limited Warranty term.
- Additional diagnostic time cannot be claimed for this repair.

Warranty Type	A
Symptom Code	27
Damage Code	93
Part Number Main Cause	7777-SP-J23
Quantity	0
Operation Number / Labor Hours:	XXJD9XFX / 0.4 Hrs.