

© 2015 Mazda Motor of America, Inc.

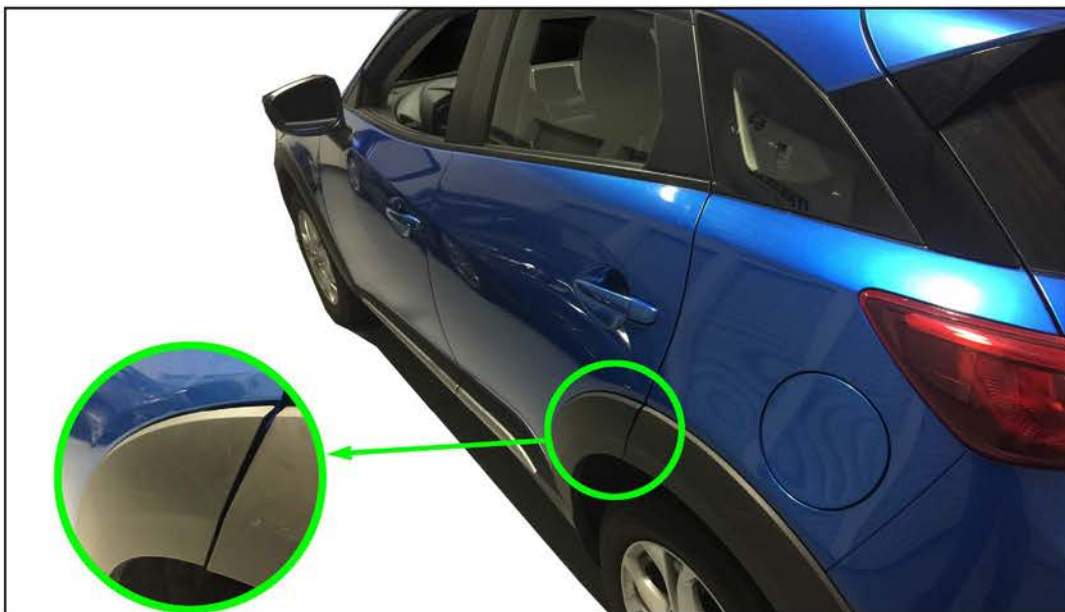
Subject: REAR DOOR SIDE GARNISH DETACHED (PEELING)	Bulletin No: 09-033/15
	Last Issued: 08/25/2015

APPLICABLE MODEL(S)/VINS

2016 CX-3 vehicles with VINs lower than JM1 DK ***** 104149 (produced before June 03, 2015)

DESCRIPTION

Some vehicles may exhibit the rear door side garnish detaching from the door (1 or both sides).



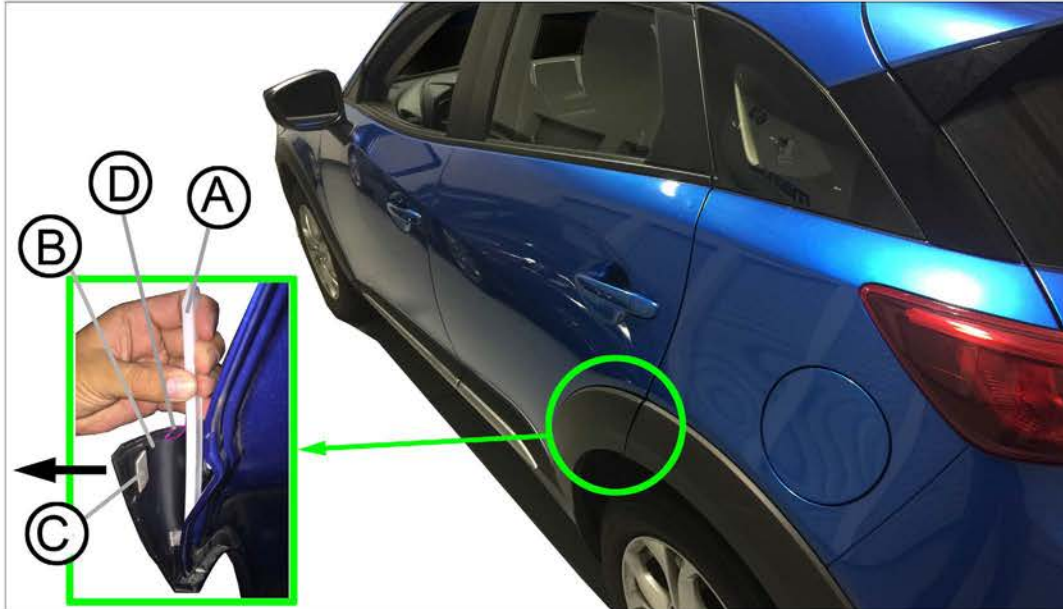
Customers having this concern should have their vehicle repaired using the following repair procedure.

CONSUMER NOTICE: The information and instructions in this bulletin are intended for use by skilled technicians. Mazda technicians utilize the proper tools/equipment and take training to correctly and safely maintain Mazda vehicles. These instructions should not be performed by "do-it-yourselfers." Customers should not assume this bulletin applies to their vehicle or that their vehicle will develop the described concern. To determine if the information applies, customers should contact their nearest authorized Mazda dealership. Mazda North American Operations reserves the right to alter the specifications and contents of this bulletin without obligation or advance notice. All rights reserved. No part of this bulletin may be reproduced in any form or by any means, electronic or mechanical---including photocopying and recording and the use of any kind of information storage and retrieval system ---without permission in writing.

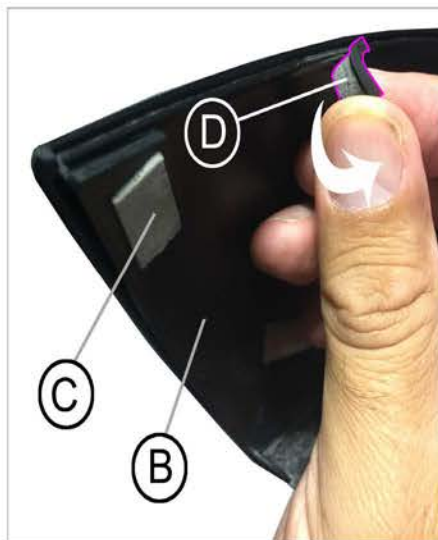
REPAIR PROCEDURE

1. Verify customer concern.

NOTE: Perform the following steps with the garnish installed to the rear door.

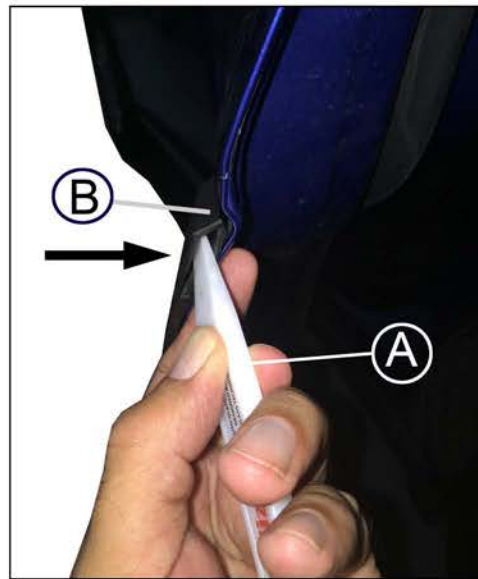


2. Use a plastic trim and molding tool (A) or equivalent, pull the garnish (B) away from door to gain access to the tape (C) and L-shape protector (D).
3. Remove the L-shape protector (D) and discard it.




4. Remove any remaining tape (C) from the surface of the garnish and door panel.
5. Remove any grease or dirt from the garnish and door where the new tape (C) will be attached.
6. Apply 3M automotive adhesion promoter 06396 or equivalent to the garnish and door where the new tape (C) will be attached.
7. Attach the new tape (C) (where the previous tape was removed) to the garnish (B).

8. Insert a plastic trim and molding tool or equivalent (A) into the hollow part of the garnish (B), then reinstall the garnish by applying light pressure to bond the door panel.



9. Verify repair.

PART(S) INFORMATION

Part Number	Description	Qty.	Note
D1YD-50-898	Tape	1 per side	10mm X 20mm (1.4mm thickness)
--	Primer	1	Dealer supplied 3M automotive adhesion promoter 06396 or equivalent 

WARRANTY INFORMATION

NOTE:

- This warranty information applies only to verified customer complaints on vehicles eligible for warranty repair.
- This repair will be covered under Mazda's New Vehicle Limited Warranty term.
- Additional diagnostic time cannot be claimed for this repair.

	One Side	Both Sides
Warranty Type	A	
Symptom Code	89	
Damage Code	9K	
Part Number Main Cause	D1YD-50-898	
Quantity	1	2
Operation Number / Labor Hours:	XXL4TARX / 0.3 Hrs.	XXL4TBRX / 0.5 Hrs.