

# CAMPAIGN BULLETIN

Subject: **Field Service Campaign 15M3**  
**GHG14 DD Platform Model Year 2015 Software Reprogramming**

## **Issue Involved**

Detroit Diesel Corporation (DDC) has determined that some certified Model Year 2015 GHG14 DD15AT platform engines with the 400 hp/1750 torque rating in MCM software 4.7.0.0 and fuel map P/N: A0304480335 ZGS 001 or ZGS 002 will require reprogramming to a minimum of fuel map version **ZGS 003** (or higher).

Note that the ACM software level should already be at 5.57.0.0 software and therefore will not require reprogramming.

Note that the CPC software level should already be at R34\_00\_000A software and therefore will not require reprogramming.

Note that for trucks equipped with the Detroit™ DT12™ transmission, the TCM should already be at NAMT070700 software and therefore will not require reprogramming.

The updated fuel map became effective with vehicles manufactured after approximately September 15, 2015. Any model year 2015 vehicle manufactured between December 22, 2014, and September 15, 2015, and running older fuel map P/N: A0304480335 ZGS 001 or ZGS 002 may need the MCM reprogrammed. Note that some trucks may already have been reprogrammed and will be excluded from this Field Service Campaign.

Note that the currently available software and fuel map levels may be higher than the minimum level shown above.

Reprogramming will correctly enable coolant temperature monitoring during DT12™ transmission e-Coast events when the engine rpm is 500 rpm.

There are approximately 6,359 engines affected by this Field Service Campaign.

## **Engines Involved**

A list of engines located in your area of responsibility that require this correction is attached.

## Field Service Campaign Bulletin 15M3

Page Two

The table below gives descriptive information to help identify the affected units:

Model Series	Model Number	Model Year	Inclusive Vehicle Mfg. Date (From) (To)	Descriptive Information
DD15AT	D472906	2015	December 22, 2014 to September 15, 2015	400/1750 Rating in MCM software 4.7.0.0 and fuel map P/N: A0304480335 ZGS 001 or ZGS 002

### Owner Notification

Detroit Diesel will notify owners of equipment incorporating engines identified with this Field Service Campaign. A copy of the owner letter that will be used by Detroit Diesel is enclosed with this Field Service Campaign bulletin.

### Distributor / Dealer Campaign Responsibility

Detroit Diesel repair facilities are to service all engines subject to this Field Service Campaign. Field Service Campaign 15M3 is to be performed at no charge to owners on all affected engines under the engine warranty. Please use the appropriate steps, noted below, for indicating that Field Service Campaign 15M3 has been completed.

### Daimler Trucks North America Vehicles

- Check the base label (**Form WAR259**) to see if **Field Service Campaign 15M3** has been completed. The base label is usually located on the passenger-side door about 30 cm (12 inches) below the door latch. If **Field Service Campaign 15M3** has been completed, no further work is needed. If base label is not located on the passenger-side door, please affix label (**Form WAR259**) 30 cm (12 inches) from the door latch.
- Upon completion of **Campaign 15M3**, clean a spot on the base label (**Form WAR259**), write the Campaign Number (**15M3**) on a blank, black completion sticker (**Form WAR261**), and attach it to the base label.

### **Ordering Information**

1. If you do not have the appropriate Form *or* Labels (DDC\_WAR 259, DDC\_WAR 260, DDC\_WAR 261), they can be ordered from **RR Donnelly** by going to **www.DDCSN.com** and clicking on Literature / Ordering Literature.
2. You can also fax in your order to **(800) 773-1430 – ATTN: Jacqueline**
3. Contact **RR Donnelly** at **(800) 280-4520**.

### **Parts Information**

There are **no parts** required for this Field Service Campaign.

### **Corrective Procedure**

1. Apply the parking brake, chock the wheels, and perform any other applicable safety steps.
2. You **MUST** use DiagnosticLink<sup>®</sup> Professional 8.01 (*or* higher) when reprogramming. Note that the current version is DiagnosticLink<sup>®</sup> 8.02 with Service Pack 2. **REFERENCE** Detroit Customer Service Announcement letter 15 CSA-18 for more information on DiagnosticLink<sup>®</sup> 8.02 with Service Pack 2.
3. Begin the process by connecting DiagnosticLink to the vehicle. Make sure that all the modules (ACM, CPC, MCM, and if applicable, the TCM) are connected.

#### **NOTICE:**

**BEFORE** you begin reprogramming, make sure the VIN is correct in all modules (ACM, CPC, MCM, and if applicable, the TCM). If the VIN is not correct in all modules, you will get an error message when attempting to reprogram.

# Field Service Campaign Bulletin 15M3

Page Four

4. Make sure the VIN is correct in all modules (ACM, CPC, MCM, and if applicable, the TCM) by looking at the “Identification” screen in DiagnosticLink. If the VIN is not correct in all modules, you can correct the VIN under the Actions drop-down menu in DiagnosticLink by selecting the “Check VIN Synchronization” item. Select “Start” from this panel and follow the prompts. You will be prompted to cycle the key until the routine has completed. When synchronization is complete, turn the key back on and continue with the download process.
5. On the Identification screen, check the current MCM software and fuel map level. See Figure 1 for an example of the Identification screen.

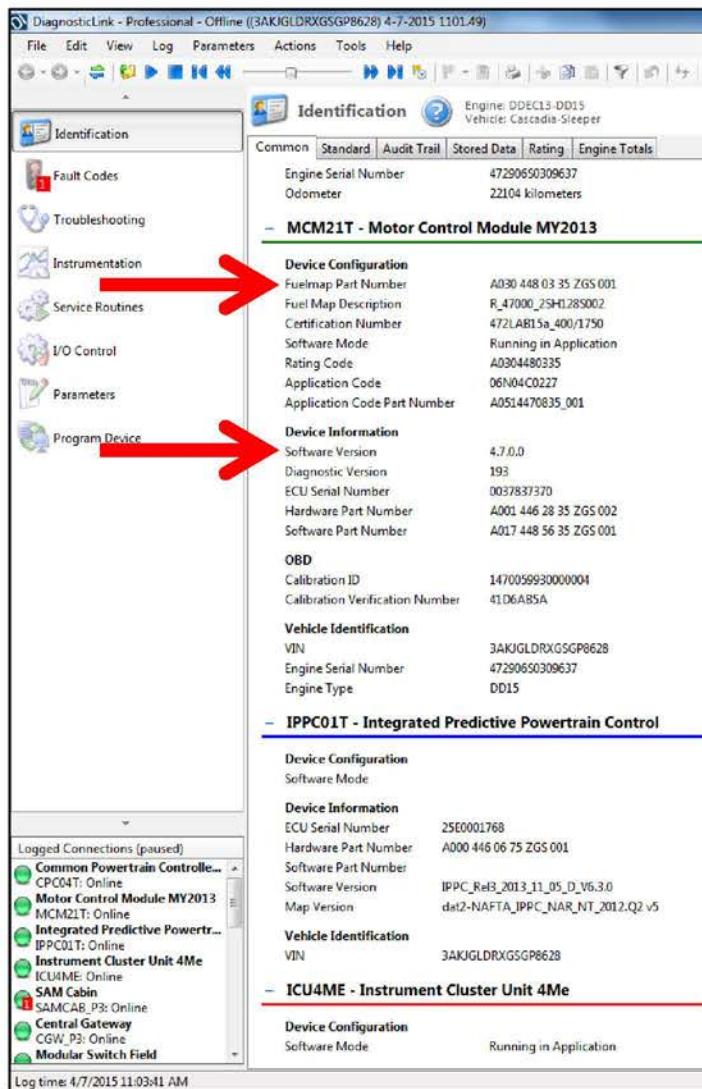
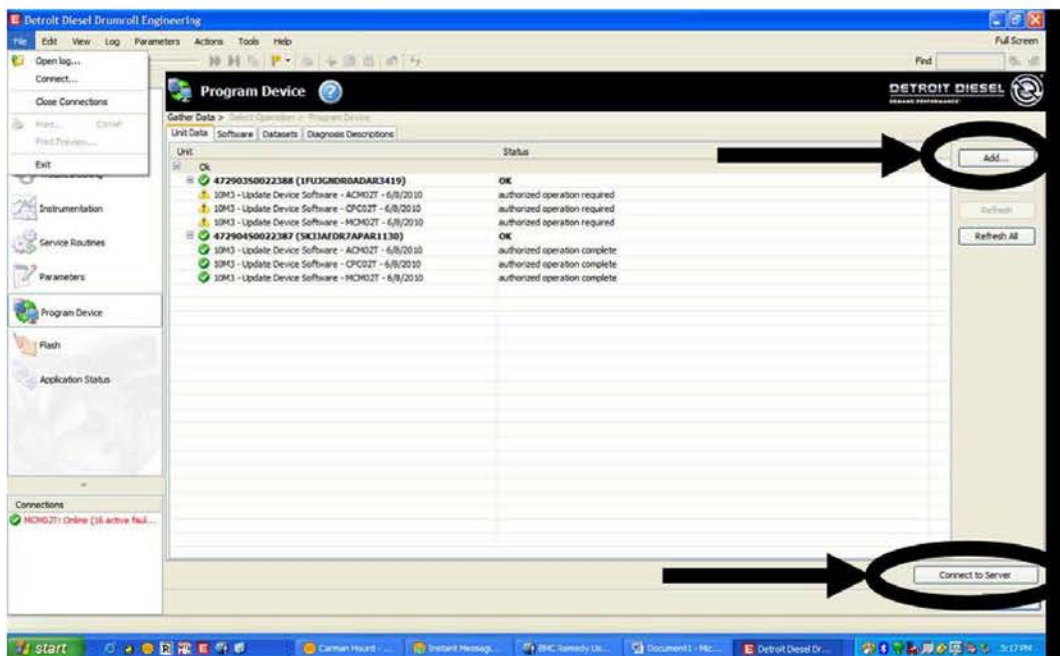


Figure 1 – DiagnosticLink Identification Screen

**Field Service Campaign Bulletin 15M3**  
Page Five

6. Is the MCM fuel map P/N: A0304480335 ZGS 003 (or higher)?
  - a. If Yes, then no programming is necessary. Proceed to step 11.
  - b. If No, then proceed to step 7.
7. Select the “Program Device” option along the left side of the DiagnosticLink screen.
8. Select the “Add” button in the upper right corner of the DiagnosticLink screen and enter the engine serial number. Then click the “Connect to Server” button in the bottom right corner of the DiagnosticLink screen. See Figure 2.



**Figure 2 – Adding Engine Serial Number and Connecting to Server**

9. Program the MCM. Note that the currently available fuel map level may be higher than the minimum level shown in step 6.

## Field Service Campaign Bulletin 15M3

Page Six

10. When programming is complete, click the "Finish" button and perform the following to allow the modules to synchronize with each other:
  - a) Turn the vehicle ignition OFF, disconnect the USB Link at either the computer port or vehicle diagnostic port, and wait one minute.
  - b) Turn the vehicle ignition ON and wait one minute.
  - c) Turn the vehicle ignition OFF and wait one minute.
  - d) Turn the vehicle ignition ON and wait one minute.
  - e) Reconnect the USB Link, reconnect DiagnosticLink to the MCM, ACM, CPC, and if applicable the TCM, and confirm the proper software and fuel map levels.

<b>NOTICE:</b>
<b>CHECK</b> with the customer to see if Auto Elevate can be enabled. Auto Elevate can prevent Aftertreatment System (ATS) issues.

11. Ask the customer if they would like Auto Elevate activated. **REFERENCE** Detroit Technical Service letter 14 TS-20 for full details on Auto Elevate.
12. Repairs are complete.

<b>Notice</b>
<b>SRT 939-6010A for 0.3 hour administration time should be added</b>

**Warranty Information**

<b>Claim Type:</b>	<b>01</b>
<b>Modification</b>	<b>15M3</b>
<b>Fault Type:</b>	<b>ZZ</b>
<b>Primary Failed Part:</b>	<b>REPROGRAM</b>
<b>Labor Code:</b>	<b>R15M3 Reprogram MCM</b>
<b>Labor:</b>	<b>0.5 Hours (Note an additional SRT 939-6010A for 0.3 hour administration time should be added)</b>

Please contact the Detroit™ Customer Support Center at 800-445-1980 or email [csc@daimler.com](mailto:csc@daimler.com) if you have any questions.

**DETROIT DIESEL**  
13400 Outer Drive West  
Detroit, Michigan 48239-4001

**BULLETIN**