

Subject: SEAT WARMER MALFUNCTION	Bulletin No: 09-004/15
	Last Issued: 07/14/2015

BULLETIN NOTE

- This bulletin supersedes the previous bulletin 09-004/15 issued on 02/04/2015, 09-033/14, issued on 08/18/2014 and 07/16/2014. The APPLICABLE MODEL(S)/VINS have been revised.
- Changes are noted below in Red beside the change bar.

APPLICABLE MODEL(S)/VINS

2013-2015 CX-5 vehicles equipped with seat warmers with VINs lower than JM3KE*****531471 (produced before September 22, 2014)

2014-2015 Mazda6 vehicles equipped with seat warmers with VINs lower than JM1GJ*****211892 (produced before September 29, 2014)

DESCRIPTION

Some vehicles may exhibit an inoperative seat warmer (or seat heater) on the driver and/or passenger seat.

When weight is applied to the seat, part of the heater element wire may come out of position and become bent. Under repeated stress, the wire may break causing an inoperative seat warmer condition.

Customers having this concern should have their vehicle repaired using the following repair procedure.

Repair Overview:

Affected Seat	Repair	Notes
Driver	Replace Seat Cushion Warmer	Do not replace seat cushion pad assembly.
Passenger	Replace Seat Cushion Pad Assembly	Pad assy. includes improved seat warmer.

REPAIR PROCEDURE

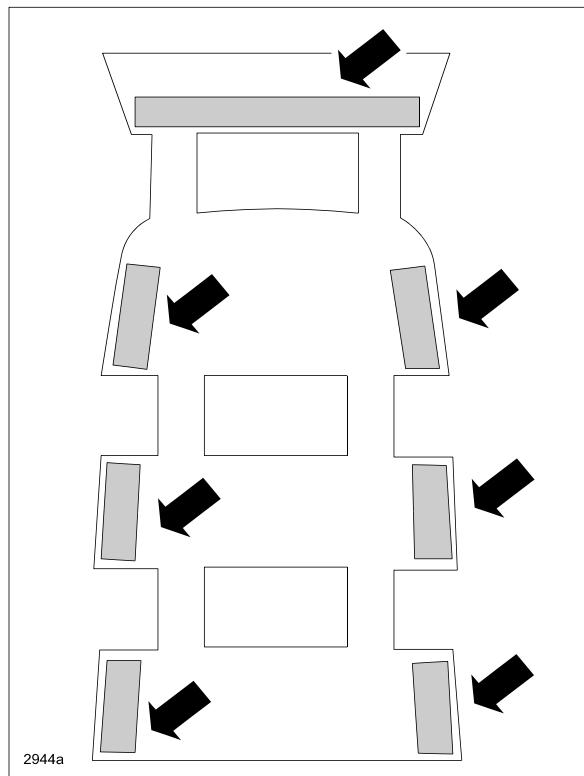
DRIVER SEAT:

1. Verify the seat warmer in the driver seat is inoperative.
2. Remove the seat cushion trim from the driver seat according to the MS3 online instructions or the Workshop Manual section 09-13:
 - CX-5 - (FRONT SEAT CUSHION TRIM REMOVAL/INSTALLATION).
 - Mazda6 - (FRONT SEAT CUSHION TRIM REMOVAL/INSTALLATION).
3. Proceed to "**Driver Seat: Seat Cushion Warmer Replacement Procedure**" for seat warmer removal and installation of the modified seat warmer.

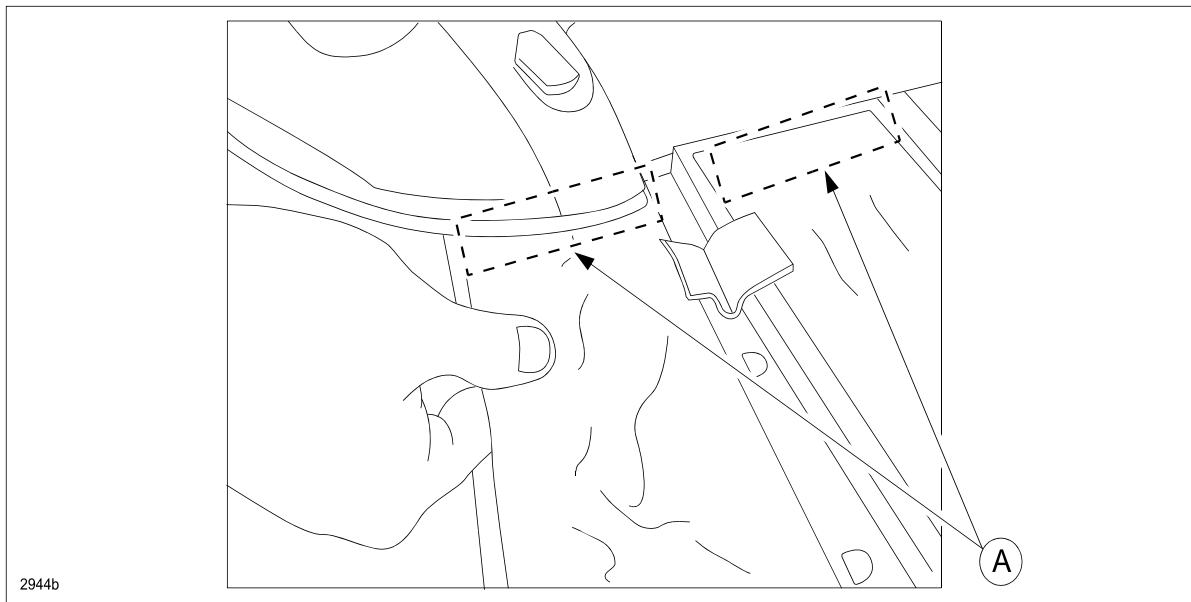
Driver Seat: Seat Cushion Warmer Replacement Procedure

Seat Warmer Removal:

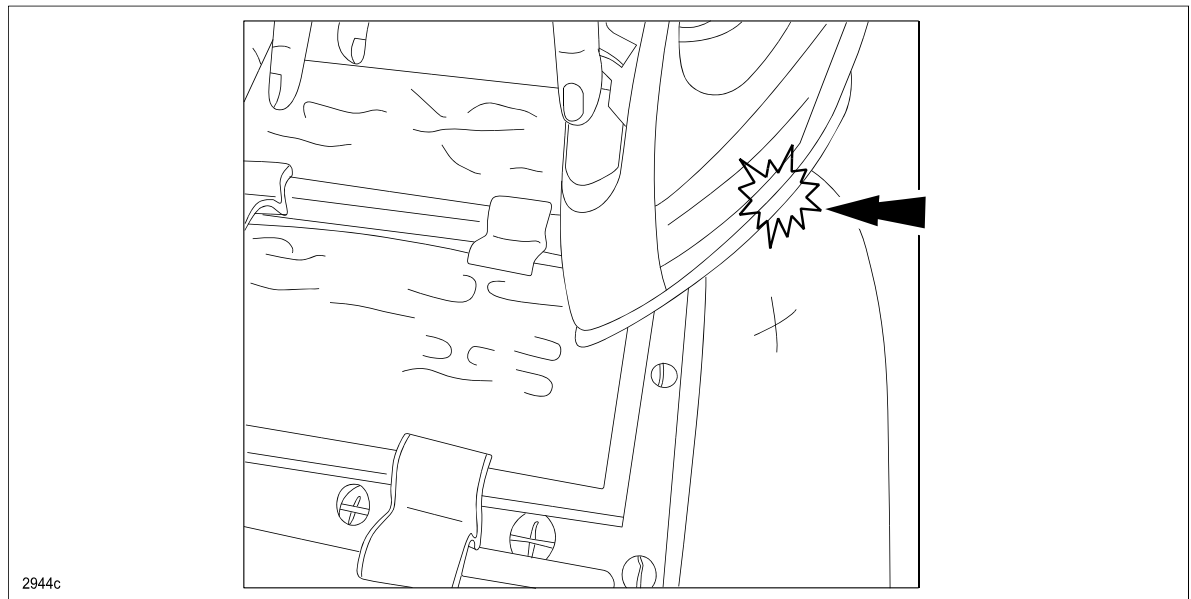
1. Identify the locations of double-sided adhesive tape, which secure the seat warmer to the seat cushion.



- Using a house-hold iron set to 140 ~ 150 degrees F (60 ~ 65.5 degrees C), carefully heat the pieces of double-sided adhesive tape (A) and gradually remove them all.



NOTE: DO NOT apply the iron directly to the cushion pad, as it could melt the pad.

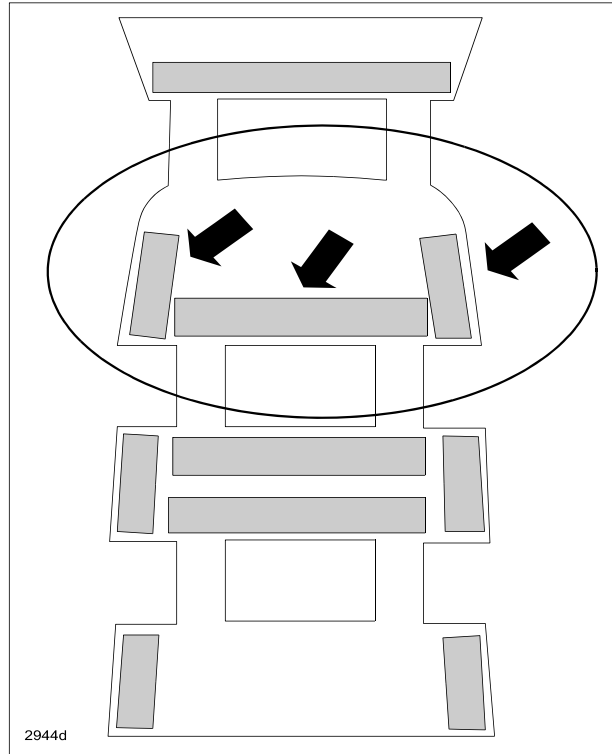


- Remove the old seat warmer from the seat cushion, then proceed to **“Seat Warmer Installation”**.

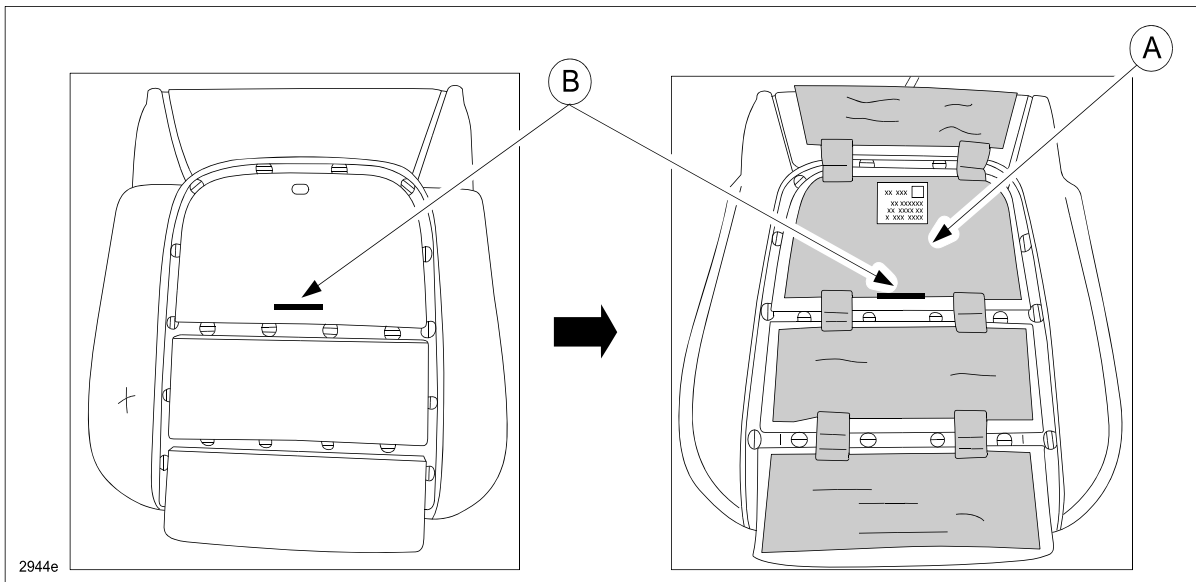
Seat Warmer Installation:

1. Peel off the protective film from the double-sided adhesive tape from the upper section of the new seat warmer.

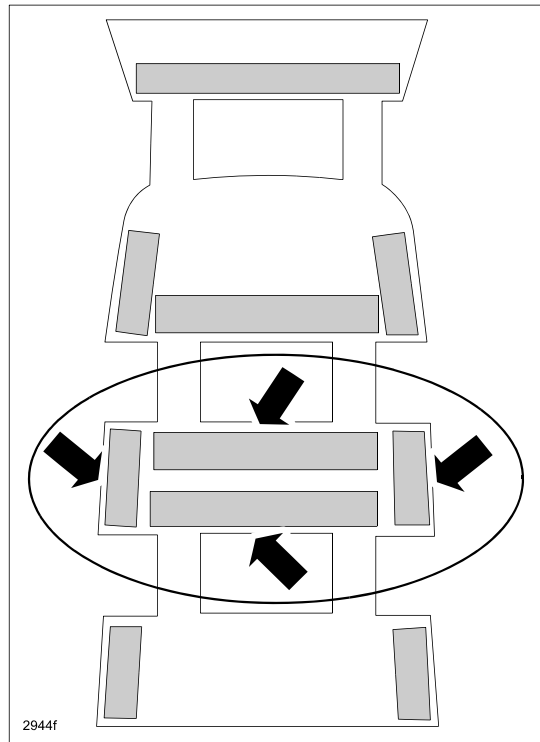
NOTE: DO NOT remove the other pieces of protective film at this time.



2. Align the bottom edge of the seat warmer (A) with the groove in the pad (B) as shown below. Press the seat warmer to affix it to the pad.



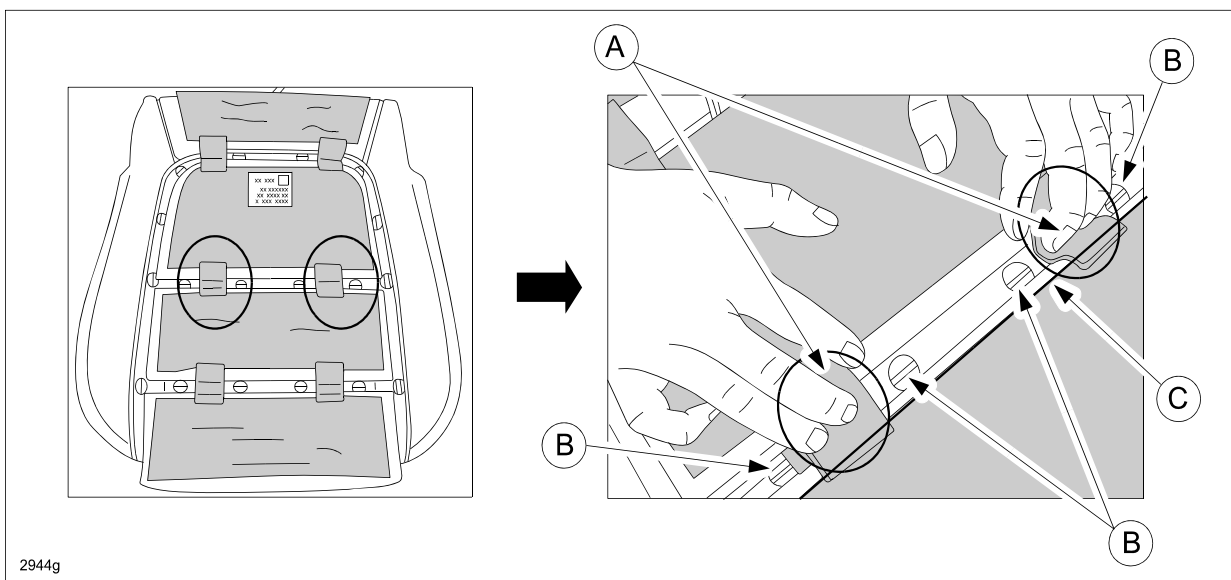
3. Peel off the protective film from the double-sided adhesive tape from the middle section of the seat warmer.



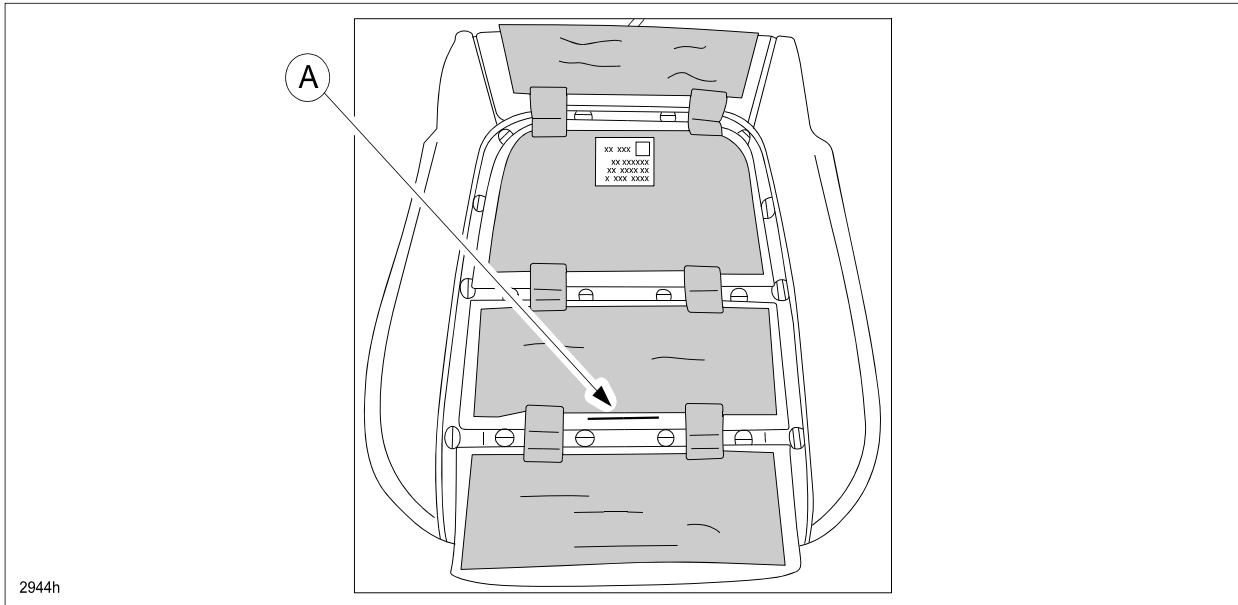
4. Press the two (2) seat warmer bridges (A) into the groove in the pad.

NOTE:

- DO NOT allow too much tension or too much slack in the seat warmer bridges (A).
 - DO NOT place the seat warmer bridges (A) over the pad wires (B).
5. Align the edge of the seat warmer (C) in parallel to the line of the pad groove. Press the seat warmer to affix it to the pad.



NOTE: Disregard the groove (A) in the pad shown below. It is not used during the repair.



6. Affix the remaining (upper and lower) sections of the seat warmer to the seat cushion in the same manner as described above in Steps 3 ~ 5.
7. Reinstall the driver seat cushion trim according to the MS3 online instructions or the Workshop Manual section 09-13:
 - CX-5 - (FRONT SEAT CUSHION TRIM REMOVAL/INSTALLATION).
 - Mazda6 - (FRONT SEAT CUSHION TRIM REMOVAL/INSTALLATION).
8. Verify proper seat warmer operation.

PASSENGER SEAT:

1. Verify the seat warmer in the passenger seat is inoperative.
2. Remove the seat cushion trim from the passenger seat according to the MS3 online instructions or the Workshop Manual section 09-13:
 - CX-5 - (FRONT SEAT CUSHION TRIM REMOVAL/INSTALLATION).
 - Mazda6 - (FRONT SEAT CUSHION TRIM REMOVAL/INSTALLATION).
3. Replace the seat cushion pad assembly with a modified part.

NOTE: The passenger side seat cushion pad assembly includes the improved seat warmer.
4. Reinstall the passenger seat cushion trim according to the MS3 online instructions or the Workshop Manual section 09-13:
 - CX-5 - (FRONT SEAT CUSHION TRIM REMOVAL/INSTALLATION).
 - Mazda6 - (FRONT SEAT CUSHION TRIM REMOVAL/INSTALLATION).
5. Verify proper seat warmer operation.

PART(S) INFORMATION

CX-5

Part Number	Description	Qty.	Spec.
KD49-88-123A	Seat Cushion Warmer (Drivers Seat)	1	Cloth (Type B Cushion Pad)
KD51-88-123A		1	Leather (Type B Cushion Pad)
KD35-88-11XA	Seat Cushion Pad (Passenger Seat)	1	Leather
KE40-88-11XA		1	Cloth (Type B Cushion Pad)

Mazda6

Part Number	Description	Qty.	Spec.
GHL2-88-123	Seat Cushion Warmer (Driver Seat)	1	Leather Seat
GHK3-88-123A		1	Cloth Seat
GLK3-88-11XA	Seat Cushion Warmer (Passenger Seat)	1	Leather Seat
GJS1-88-11XA		1	Cloth Seat

WARRANTY INFORMATION

NOTE:

- This warranty information applies only to verified customer complaints on vehicles eligible for warranty repair.
- This repair will be covered under Mazda's New Vehicle Limited Warranty term.
- Additional diagnostic time cannot be claimed for this repair.

	Driver Seat - (Seat Warmer Replacement)	Passenger Seat - (Seat Cushion Replacement)
Warranty Type	A	A
Symptom Code	61	61
Damage Code	9S	9S
Part Number Main Cause	****-88-123	****-88-11X
Quantity	1	1
Operation Number / Labor Hours:	XXK7TARX / 1.1 Hrs.	XXK7TBRX / 1.1 Hrs.