

# Tire Pressure Warning System Activation & Initialization

**Service Category** General

**Section** Pre-Delivery Service

**Market** USA

Lexus Supports  
ASE Certification 

## Applicability

YEAR(S)	MODEL(S)	ADDITIONAL INFORMATION
2016	RX350, RX450H	

## Introduction

2016 Model year RX 350 and RX 450h vehicles are equipped with a direct-type Tire Pressure Warning System (TPWS). Each tire (including the spare tire) has a tire pressure warning valve/sensor that measures tire pressure. The data is transmitted to the Tire Pressure Warning System antenna/receiver and then to the Tire Pressure Warning System ECU.

After adjusting all tires to the standard air pressure, perform initialization of the tire pressure warning system during Pre-Delivery Service (PDS) according to the procedure outlined below.

## Warranty Information

OP CODE	DESCRIPTION	TIME	OFF	T1	T2
N/A	Not Applicable to Warranty	–	–	–	–

# Tire Pressure Warning System Activation & Initialization

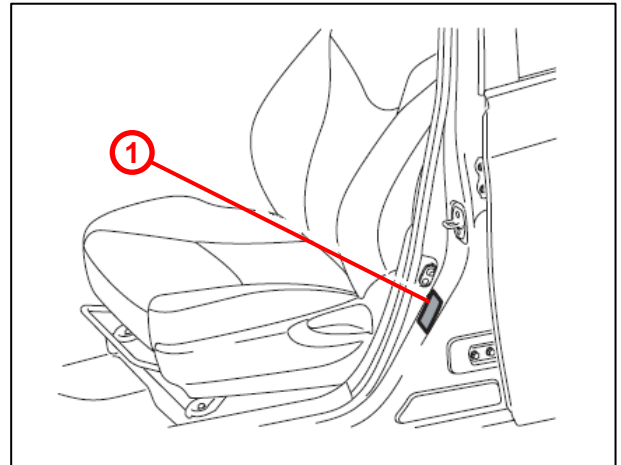
## Initialization Procedure

1. Adjust all tires (except the spare tire) to the standard tire inflation pressure, as indicated on the Tire and Loading Information label located inside the vehicle.

**NOTE**

- To adjust tire pressure correctly when outside temperature is significantly colder than shop temperature, perform a Health Check using Techstream and select the "Compensation Tire Pressure" checkbox. Compensation pressures will be displayed on the Health Check results screen.
- Adjust the tire pressure when the tires are cold.

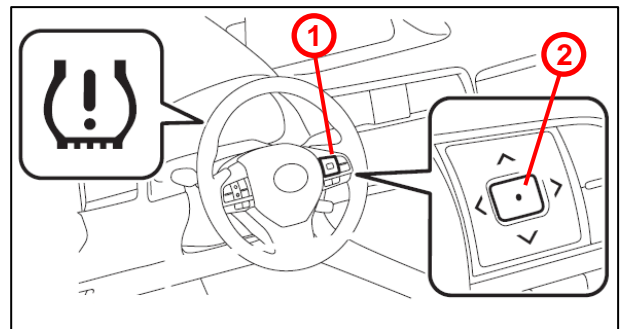
Figure 1.



1	Tire and Loading Information Label
---	------------------------------------

2. Cycle the ignition switch to the "IG-ON" position and use the Steering Pad Switch Assembly to select "TPMS" on the multi-information display.
3. Press and hold the "ENTER" Switch until the Tire Pressure Warning Light blinks 3 times.

Figure 2.



1	Steering Pad Switch Assembly
2	ENTER Switch

4. Cycle the ignition to "OFF" and then to "IG-ON."
5. Check the tire pressure values of all the tires using Techstream.  
Chassis / Tire Pressure Monitor / Data List

**NOTE**

- The order in which the data is received is random.
- It can take 2 – 3 minutes for the tire pressure values to be displayed on the Techstream Data List.
- If the signals from all the wheels are received and the Data List "ID Tire Inflation Pressure" displays, initialization is completed.
- If initialization has not been completed successfully, DTC C2177/77 is stored after a vehicle speed of at least 23 mph (37 km/h) continues for 20 minutes or more. Please refer to speed of at least 23 mph (37 km/h) continues for 20 minutes or more. Please refer to the Repair Manual for further diagnosis.

## Tire Pressure Warning System Activation & Initialization

---

### Initialization procedure (Continued)

5. Remove and discard ID number labels if attached to the wheels.