

- ATTENTION:**
- GENERAL MANAGER
  - PARTS MANAGER
  - CLAIMS PERSONNEL
  - SERVICE MANAGER

IMPORTANT - All Service Personnel Should Read and Initial in the boxes provided, right.


© 2015 Subaru of America, Inc. All rights reserved.



QUALITY DRIVEN® SERVICE

## SERVICE BULLETIN

**APPLICABILITY:** 2016MY WRX Models with EyeSight

**NUMBER:** 07-100-15

**SUBJECT:** Reprogramming for Vehicle Information Registration Menu Display

**DATE:** 11/10/15

### INTRODUCTION

This bulletin announces the availability of reprogramming files for the EyeSight system to provide proper function of the Vehicle Information Registration menu. In rare cases, when attempting to perform the Camera Initialization procedure after repair or replacement, it cannot be completed because the required Vehicle information Registration menu cannot be displayed.

### PRODUCTION CHANGE INFORMATION:

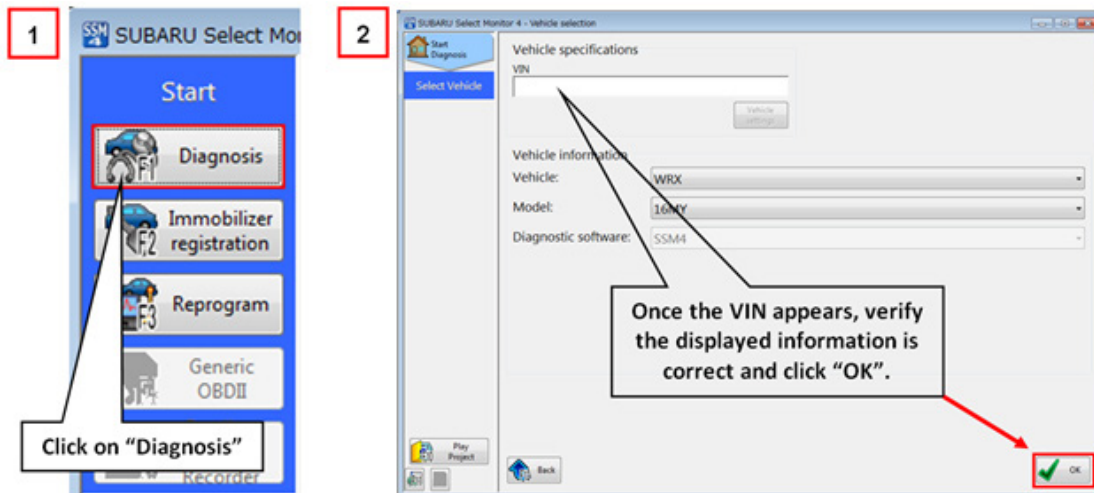
The new logic was incorporated into production June 18, 2015 on VIN G\*808423.

### PACK FILE APPLICABILITY

MODEL YEAR/ MODEL	NEW PART NUMBER	PAK FILE NAME	OLD PART NUMBERS	TARGET CONTROL SOFTWARE VERSION	DECRYPTION KEYWORD	NEW CONTROL SOFTWARE VERSION
2016MY WRX 2.0L Turbo	87501VA013	87501VA013.pak	87501VA011, 012	00006393	762E7C42	000063B1

### SERVICE PROCEDURE / INFORMATION

- Connect the SSMIV / DST-i and follow the   steps as shown in the screen shots shown below:



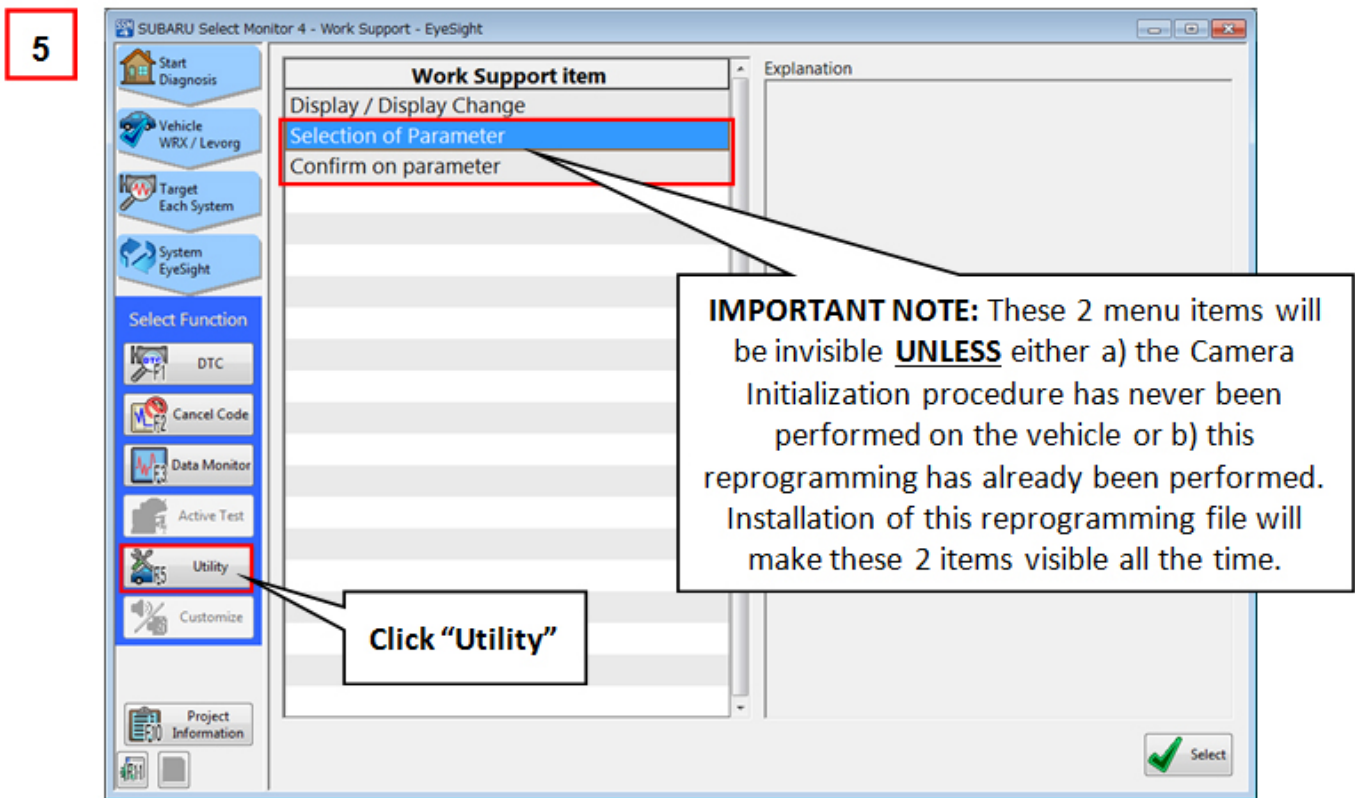
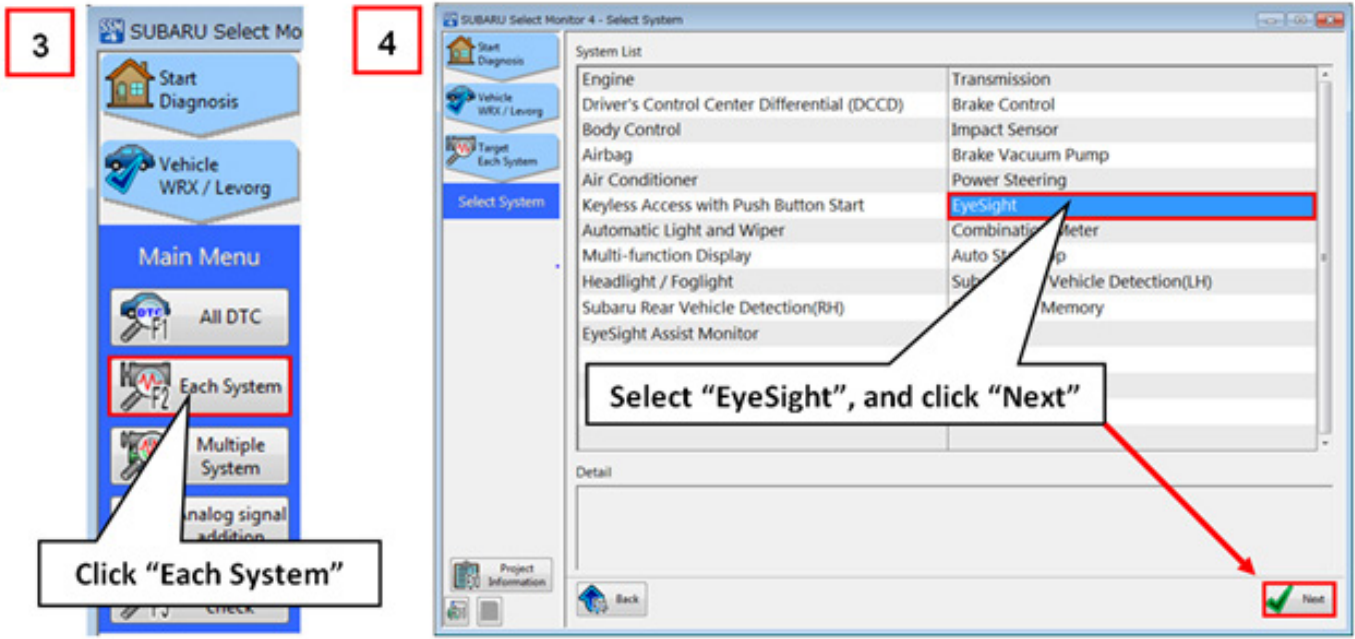
*Continued...*

**CAUTION: VEHICLE SERVICING PERFORMED BY UNTRAINED PERSONS COULD RESULT IN SERIOUS INJURY TO THOSE PERSONS OR TO OTHERS.**

Subaru Service Bulletins are intended for use by professional technicians ONLY. They are written to inform those technicians of conditions that may occur in some vehicles, or to provide information that could assist in the proper servicing of the vehicle. Properly trained technicians have the equipment, tools, safety instructions, and know-how to do the job correctly and safely. If a condition is described, DO NOT assume that this Service Bulletin applies to your vehicle, or that your vehicle will have that condition.

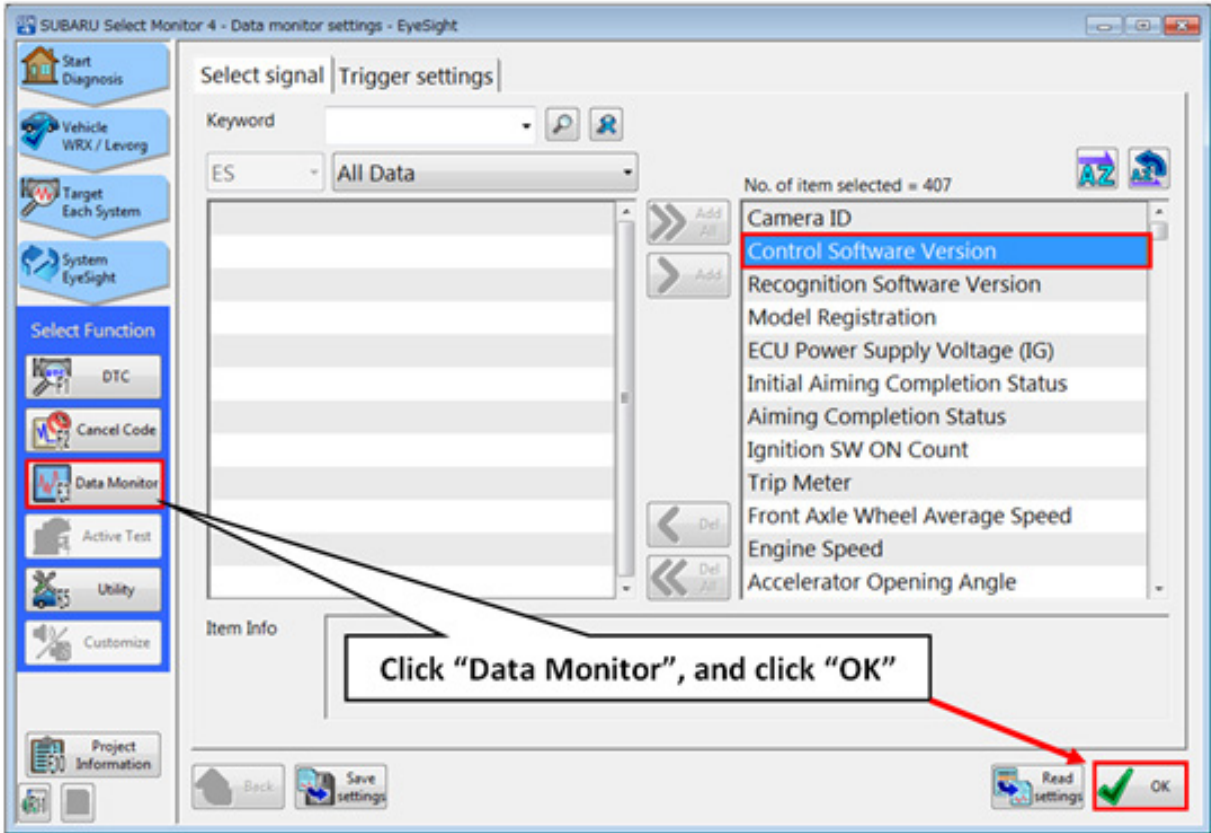
**SUBARU OF AMERICA, INC. IS ISO 14001 COMPLIANT**

ISO 14001 is the international standard for excellence in Environmental Management Systems. Please recycle or dispose of automotive products in a manner that is friendly to our environment and in accordance with all local, state and federal laws and regulations.



Continued...

6



7

Item	Value	Unit
Camera ID	014409173510	
Control Software Version	0x00006392	
Recognition Software Version	0x0000401008	
Model Registration	0000108446910	
ECU Power Supply Voltage (L)	13.7	V
Initial Aiming Completion S	Finished	
ETC Throttle Angle Signal	5	%
Steering Angle Sensor Value ...	-11.5	de
Longitudinal G Sensor Value ...	0.0	m/s
Brake Fluid Target Pressure	0.000	MP
Master Cylinder Actual Fluid ...	0.00	MP

**Control Software Version (last 8 digits)**

```

graph TD
    A[Control Software Version (last 8 digits)] --> B(00006393)
    A --> C(0000637F or LOWER)
    B --> D[Reprogram using this TSB's PAK file (87501VA013.pak)]
    C --> E[Perform the WQS-54 Campaign reprogramming procedure]
    E --> D
  
```

**Verify the last 8 digits of the Control Software Version then reprogram with the applicable PAK file(s).**

- After installation of the proper reprogramming file(s) is complete, go back to **Step 1**, proceed through to **Step 5** and confirm after clicking on “Utility”, both the Selection of Parameter and Confirm on Parameter appear under Work Support.
- After confirmation, proceed to **Step 6** and **Step 7** to verify the Control Software Version has been updated successfully (**000063B1**) to complete the procedure.

*Continued...*

## WARRANTY / CLAIM INFORMATION

For vehicles within the Basic New Car Limited Warranty period or covered by a Subaru Added Security Gold plan, this repair may be submitted using the following claim information:

LABOR DESCRIPTION	LABOR OPERATION #	FAIL CODE	LABOR TIME
EYESIGHT SYSTEM REPROGRAMMING	A067-728	ZQW-48	0.4

### IMPORTANT REMINDERS:

- SOA strongly discourages the printing and/or local storage of service information as previously released information and electronic publications may be updated at any time.
- Always check for any open recalls or campaigns anytime a vehicle is in for servicing.
- Always refer to STIS for the latest service information before performing any repairs.