	GROUP Electrical	MODEL 2014~2015MY Sorento (XMa), 2014~2015MY Sportage (SL) 2014MY Optima (TF/QF) Equipped w/Navigation
	NUMBER PS377	DATE January 2015

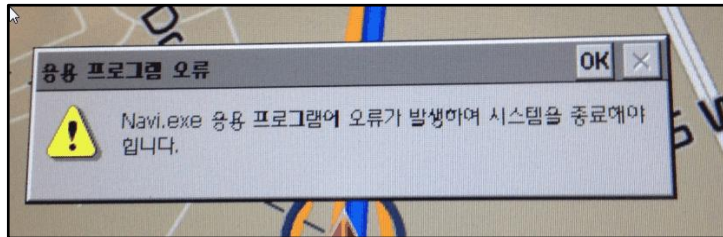


TECHNICAL OPERATIONS

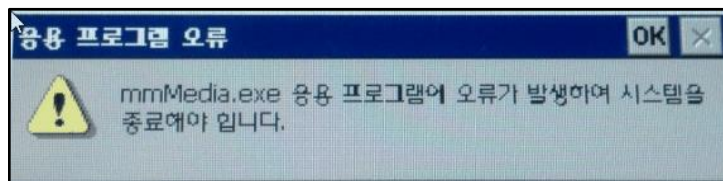
SUBJECT: KOREAN ERROR MESSAGES ON NAVIGATION DISPLAY

This article provides information to address the following customer complaints on Navigation head units (AVN 3.0 or AVN 3.5):

- Korean Error Message that starts with Navi.exe



- Korean Error Message that starts with mmMedia.exe



If these errors are encountered, replace the head unit with a remanufactured head unit, if applicable. Report any reoccurrence of the issue after head unit replacement by opening a Tech Line case.