

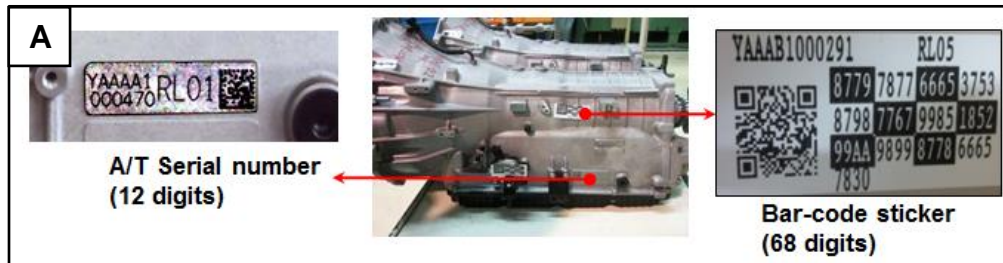
	GROUP Transmission	MODEL 2015MY > K900 (KH)
	NUMBER PS430	DATE December 2015
 		
SUBJECT: 8-SPEED TRANSMISSION REPLACEMENT REQUIREMENTS		

On K900 (KH) vehicles, the 8-speed transmission (A8TR1) has precise direct solenoid control for the clutch and brake system inside the transmission. Due to hydraulic pressure variance at the time of transmission and solenoid production, shock or shift delay may occur during gear shift after replacement. In response to this pressure variance, the hydraulic pressure is recorded in a bar code format and affixed in the form of two labels (A) on the left side of the transmission. Whenever the TCM and/or 8-speed transmission is replaced, the bar code value must be entered (B) into GDS/KDS by following the procedure outlined on KGIS.



After Transmission Exchange: use GDS/KDS Auto Input Mode. **NOTE: if internet access is not available, enter in Manual Mode. If you cannot access the internet, record the bar code data (oil pressure characteristics) on the automatic transmission case, and then input it manually on GDS/KDS. Additionally, make sure to perform the TCM adaptive values relearn procedure, using GDS/KDS.**

