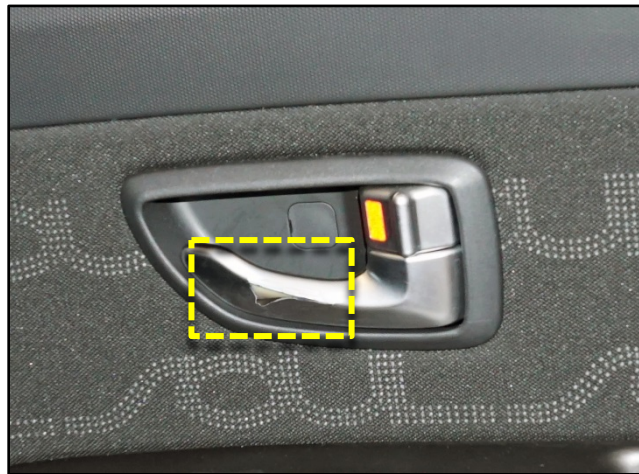
	GROUP <b>Body</b>	MODEL <b>2013MY Soul (AM)</b>
	NUMBER <b>123</b>	DATE <b>December 2015</b>
<b>TECHNICAL SERVICE BULLETIN</b>		
<b>SUBJECT: SERVICE ACTION: INTERIOR DOOR HANDLE(S) INSPECTION AND/OR REPLACEMENT (SA205)</b>		

This bulletin provides the procedure to inspect and/or replace the interior door handle(s) of some 2013MY Soul (AM) vehicles, produced from August 1, 2012 through September 30, 2013, which may exhibit peeling of the chrome finish on the door handle (as shown below). To correct this condition, Kia is requesting the completion of this Service Action on all affected vehicles. Before conducting the procedure, verify the vehicle is included in the list of affected VINs.



**\* NOTICE**

A Service Action is a repair program without customer notification that is performed during the warranty period. Any dealer requesting to perform this repair outside the warranty period will require DPSM approval.

Repair status for a VIN is provided on WebDCS (Service> Warranty Coverage> Warranty Coverage Inquiry> Campaign Information). Not completed Recall / Service Action reports are available on WebDCS (Consumer Affairs> Not Completed Recall> Recall VIN> Select Report), which includes a list of affected vehicles.

This issue number is SA 205.

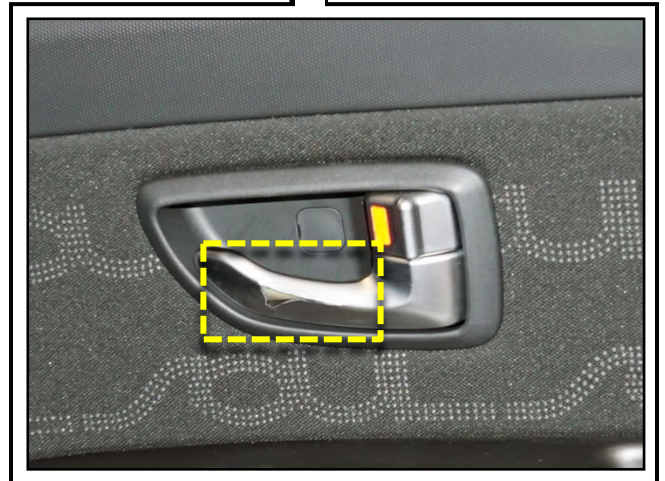
File Under: Body

- 
- Circulate To:   
 General Manager   
 Service Manager   
 Parts Manager  
 Service Advisor(s)   
 Technician(s)   
 Body Shop Manager   
 Fleet Repair

**SUBJECT: SERVICE ACTION: INTERIOR DOOR HANDLE INSPECTION AND/OR REPLACEMENT (SA 205)**

**Inspection Procedure:**

1. Open all four (4) vehicle doors and inspect each interior door handle for signs of peeling chrome, as shown.
  - If any of the interior door handle(s) exhibit peeling chrome, proceed to the Service Procedure on Page 3.
  - If none of the interior door handle(s) exhibit signs of peeling chrome, no further action is required.



**SUBJECT: SERVICE ACTION: INTERIOR DOOR HANDLE INSPECTION AND/OR REPLACEMENT (SA 205)**

**Service Procedure:**

1. Open the affected door and remove the quadrant inner cover using a trim removal tool.

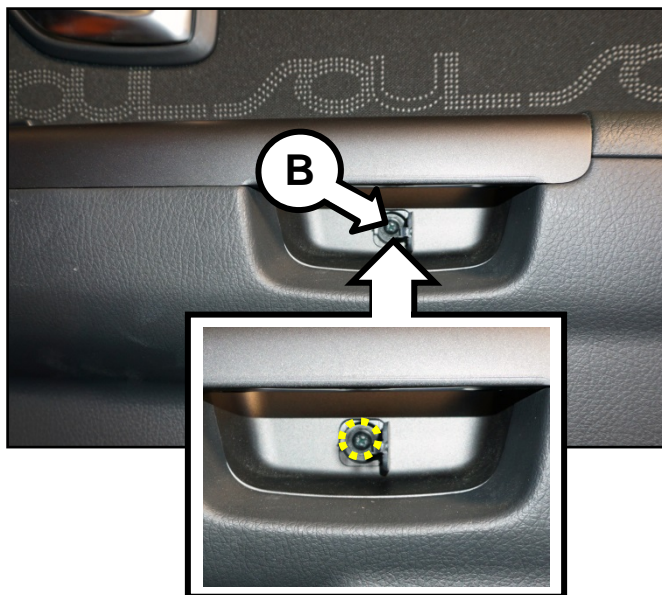


**CAUTION**

- Use a non-marring trim removal tool (Such as Snap-on® Part Number PBN5 or equivalent) to avoid damaging trim pieces.
- Be sure to wear disposable gloves throughout this procedure to avoid soiling any interior trim components.
- Exercise caution when removing the quadrant inner cover, as it can be easily damaged.



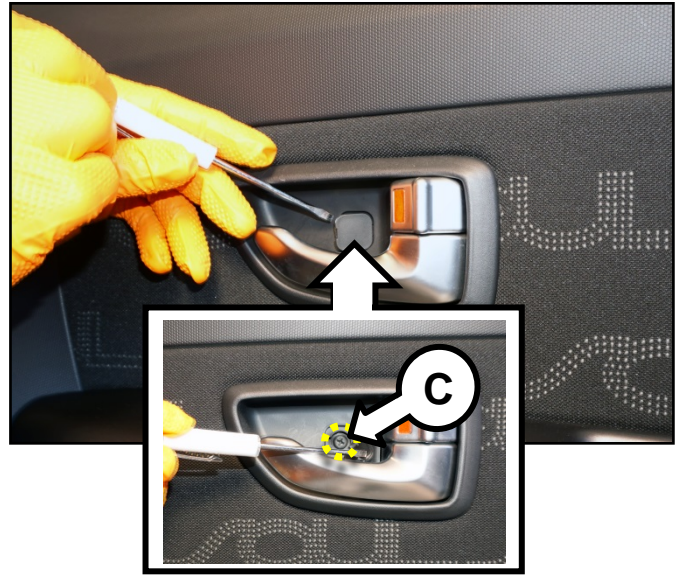
2. Carefully remove the blanking cover from the mounting location under the door grip, and remove one (1) door panel mounting screw (B).



**SUBJECT: SERVICE ACTION: INTERIOR DOOR HANDLE INSPECTION AND/OR REPLACEMENT (SA 205)**

- Carefully remove the blanking cover from the mounting location under the door handle, and remove one (1) door panel mounting screw (C).

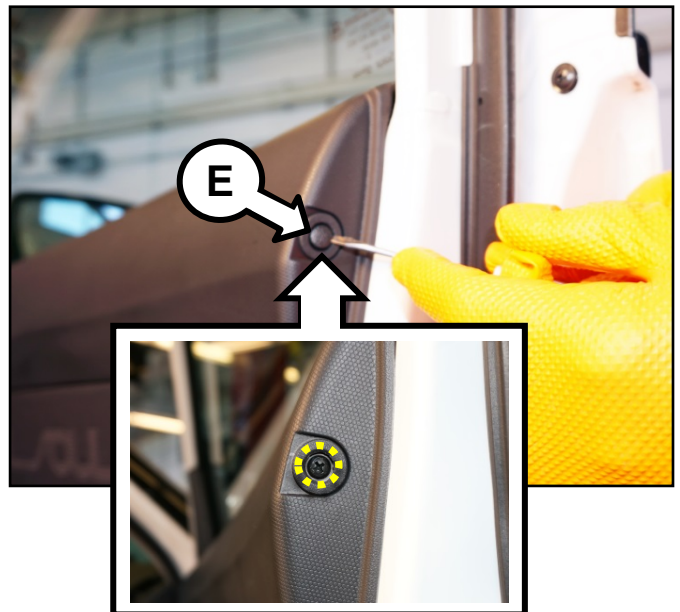
**CAUTION**  
Use a non-marring trim removal tool (Such as Snap-on® Part Number PBN5 or equivalent) to avoid damaging trim pieces.



- Carefully remove the door handle trim cover (D), as shown.

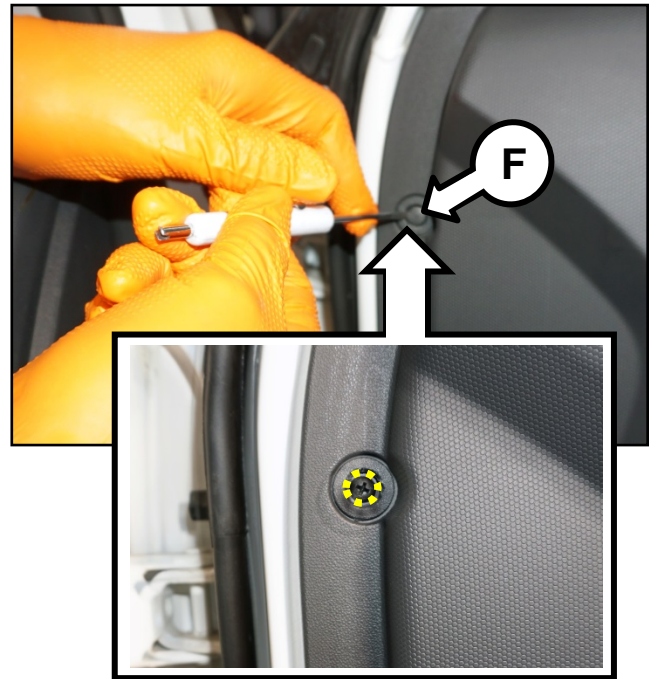


- Carefully remove the blanking cover from the outermost mounting location, and remove one (1) door panel mounting screw (E).

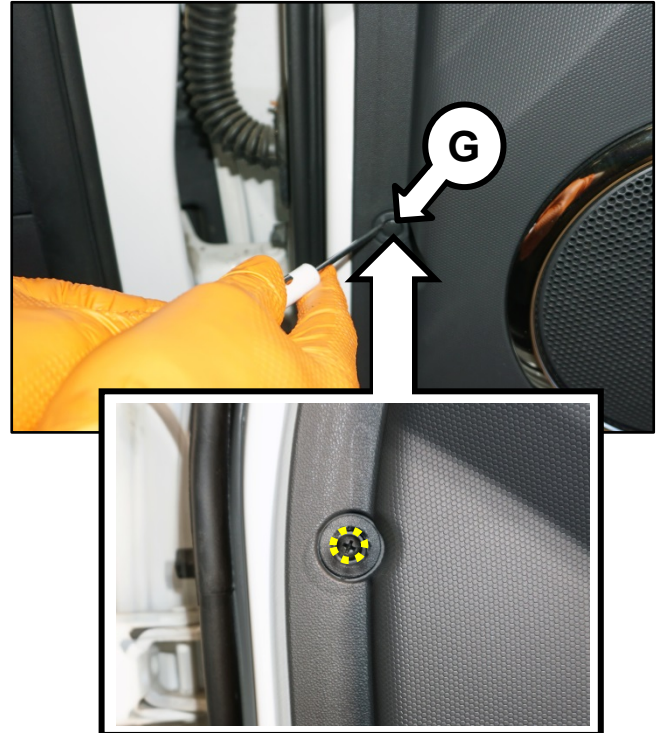


**SUBJECT: SERVICE ACTION: INTERIOR DOOR HANDLE INSPECTION AND/OR REPLACEMENT (SA 205)**

6. Carefully remove the blanking cover from the innermost, upper mounting location (F), and remove one (1) door panel mounting screw.



7. Carefully remove the blanking cover from the innermost, lower mounting location (G), and remove one (1) door panel mounting screw.



**SUBJECT: SERVICE ACTION: INTERIOR DOOR HANDLE INSPECTION AND/OR REPLACEMENT (SA 205)**

- 8. Use a plastic trim panel remover to dislodge the bottom edge of the door panel (H), and remove the door panel by applying gentle outward pulling force.

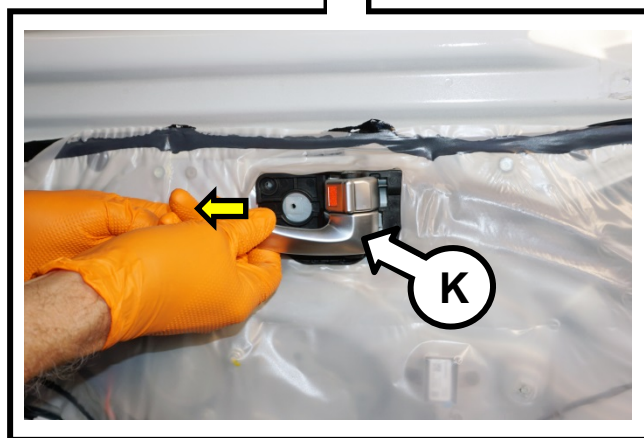
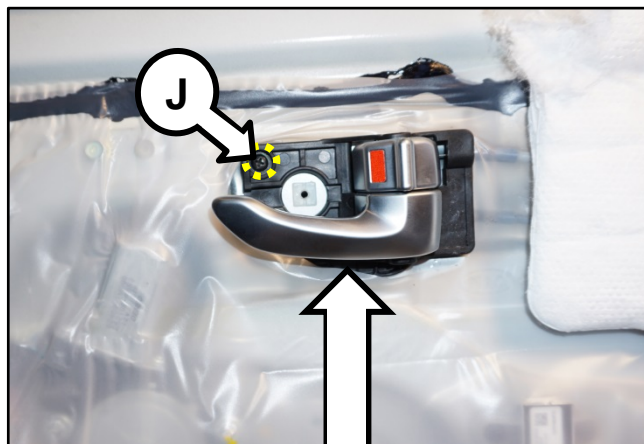


- 9. Carefully disconnect all connectors (I) from the back of the door panel.

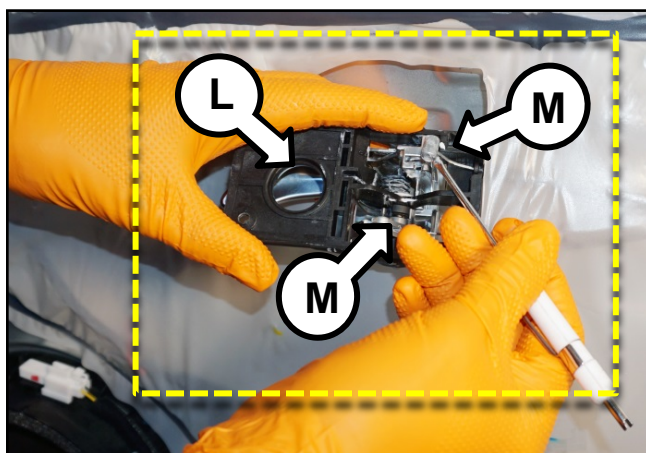


**SUBJECT: SERVICE ACTION: INTERIOR DOOR HANDLE INSPECTION AND/OR REPLACEMENT (SA 205)**

10. Remove one screw (J) from the door handle and pull the door handle (K) forward to separate from the door.



11. Remove the cable end fittings (M) from the door handle mechanism (L), as shown.



12. Install the new interior door handle and reinstall all removed components by reversing the order of removal.
13. Verify proper door handle(s) operation.

**SUBJECT: SERVICE ACTION: INTERIOR DOOR HANDLE INSPECTION  
AND/OR REPLACEMENT (SA 205)**

AFFECTED VEHICLE PRODUCTION RANGE:

Model	Production Date Range
Soul (AM)	From August 1, 2012 through September 30, 2013

REQUIRED PART:

Part Name	Part Number
Handle Assy. Front Door Inside (LH) Handle Assy. Rear Door Inside (LH)	82610 2K200QQK
Handle Assy. Front Door Inside (RH) Handle Assy. Rear Door Inside (RH)	82620 2K200QQK

WARRANTY CLAIM INFORMATION:

**N CODE: N99 C CODE: C99**

Claim Type	Causal P/N	Qty.	Repair Description	Labor Op Code	Op Time	Replacement P/N	Qty.
V	82610 2K000	0	(SA205) Inside Door Handle Inspect Four (4)	150046R0	0.2 M/H	N/A	0
			(SA205) Inside Door Handle Replace One (1) LH	150046R1	0.3 M/H	82610 2K200QQK	1
			(SA205) Inside Door Handle Replace One (1) RH	150046R2	0.3 M/H	82620 2K200QQK	1
			(SA205) Inside Door Handle Replace Two (2) LH	150046R3	0.4 M/H	82610 2K200QQK	2
			(SA205) Inside Door Handle Replace Two (2) RH	150046R4	0.4 M/H	82620 2K200QQK	2
			(SA205) Inside Door Handle Replace Two (2) 1 RH + 1 LH	150046R5	0.4 M/H	82610 2K200QQK 82620 2K200QQK	1 1
			(SA205) Inside Door Handle Replace Three (3) 2 LH + 1 RH	150046R6	0.6 M/H	82610 2K200QQK 82620 2K200QQK	2 1
			(SA205) Inside Door Handle Replace Three (3) 2 RH + 1 LH	150046R7	0.6 M/H	82610 2K200QQK 82620 2K200QQK	1 2
			(SA205) Inside Door Handle Replace Four (4)	150046R8	0.8 M/H	82610 2K200QQK 82620 2K200QQK	2 2

**\* NOTICE**

VIN inquiry data for this repair is provided for tracking purposes only. Kia retailers should reference **SA 205** when accessing the WebDCS system.