

[Translate](#)



# ROADSTER Oil Pressure Switch Connector Protective Boot Cracking (F3) - 123018

[Printable Version](#)

Rate This Article (Average Rating: No Rating) [Version 1](#) Language English ▼ [Show Properties](#)

**Summary:**

The engine oil pressure switch connector protective boot may crack or degrade over time. Follow the steps in this TST to replace the boot with a more resistant part.

**Type:**

General

**TST Detail:**

## Problem:

The engine oil pressure switch connector protective boot may crack or degrade over time.

## Solution:

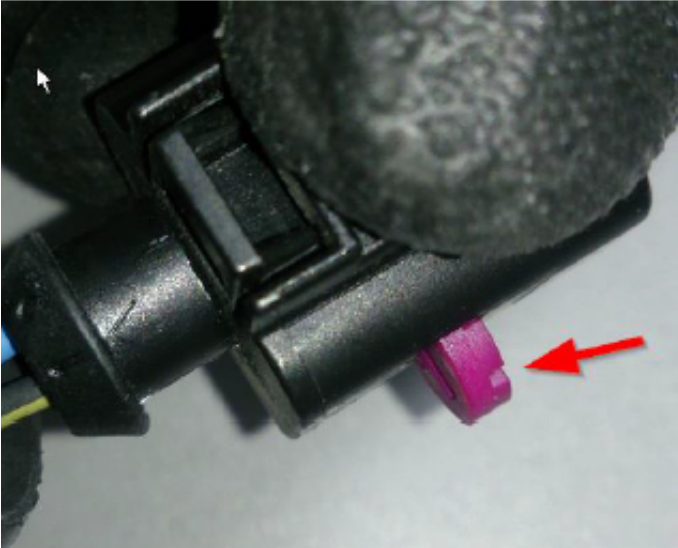
Replace the boot with a more resistant part.

## Parts Needed:

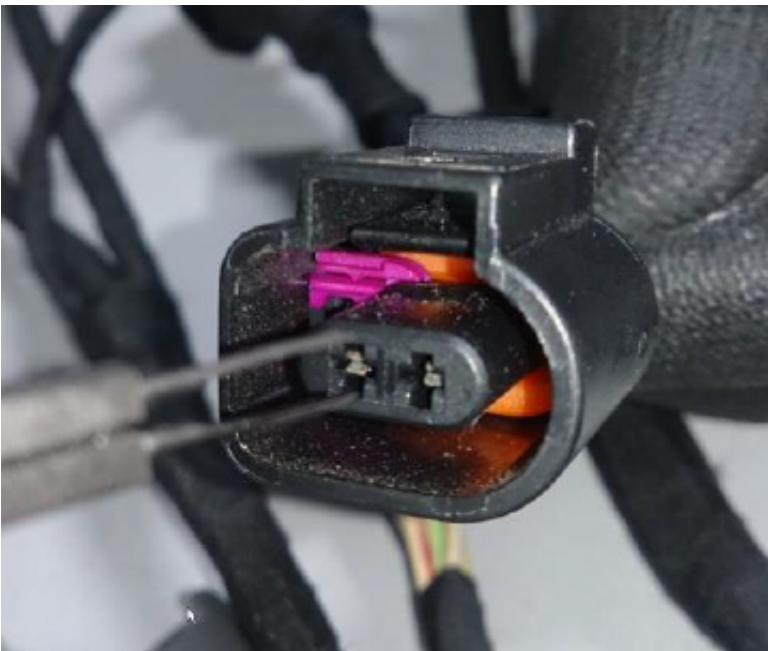
Description	Part Number	Qty
Oil pressure switch protective boot	420201760	1

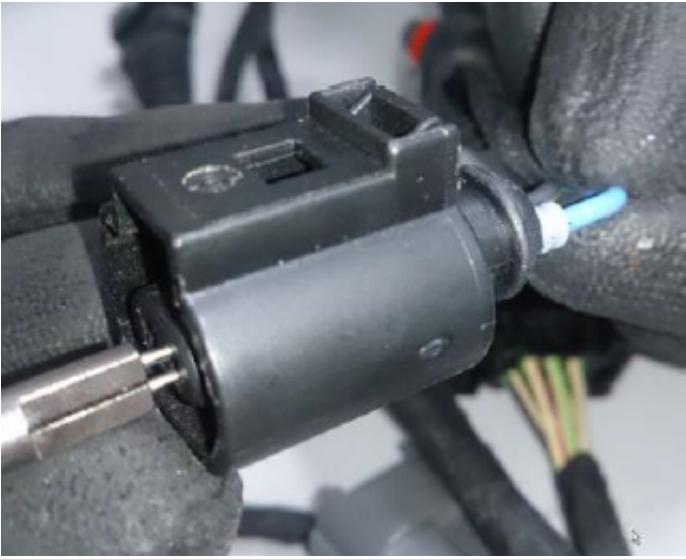
## Repair Procedure:

1. Disconnect the oil pressure switch connector.
2. Pull the protective boot from the connector.
3. Unlock the terminals.

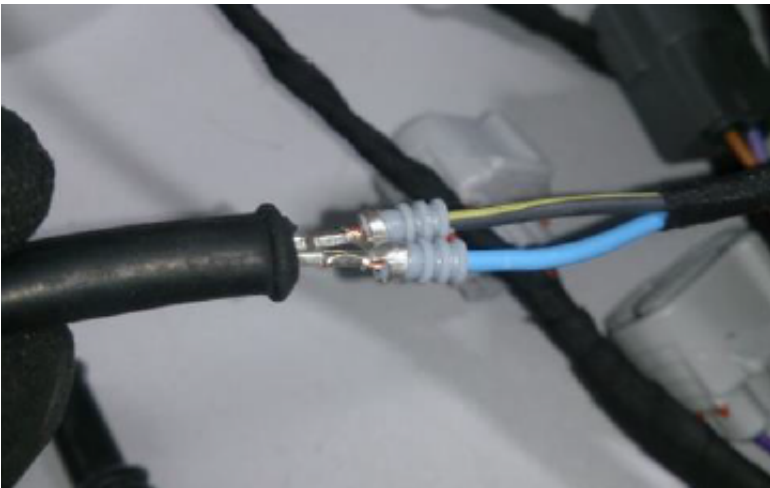


4. Insert appropriate terminal removal tool and carefully pull out both terminals.

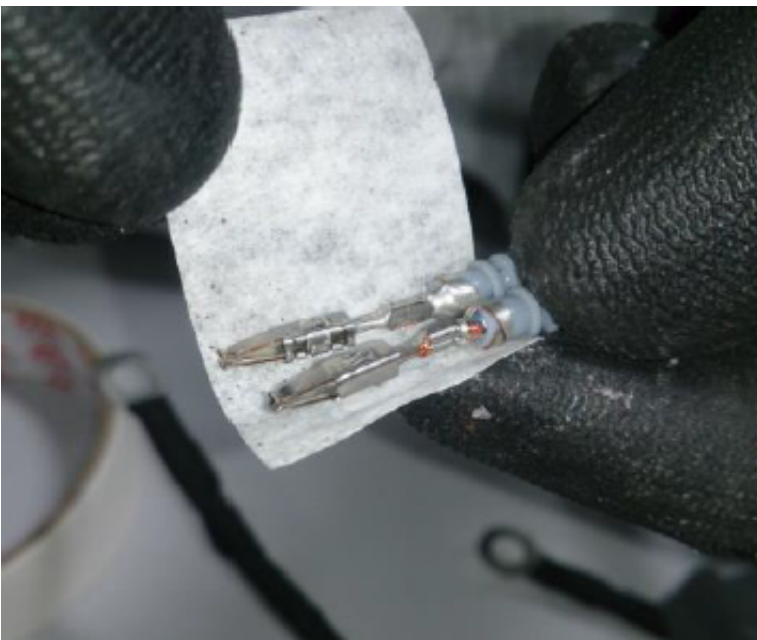




5. Remove the protective boot from the harness. Take precaution to avoid damaging the terminal seals.

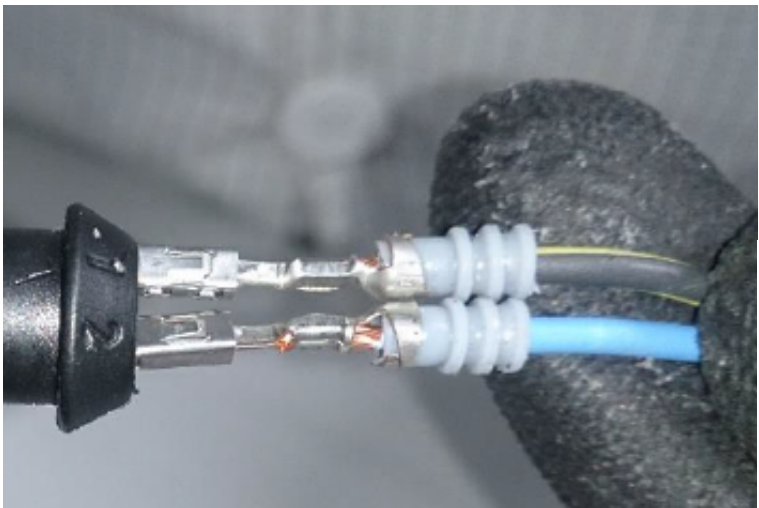


6. Wrap the terminals together with tape. Install the new protective boot.



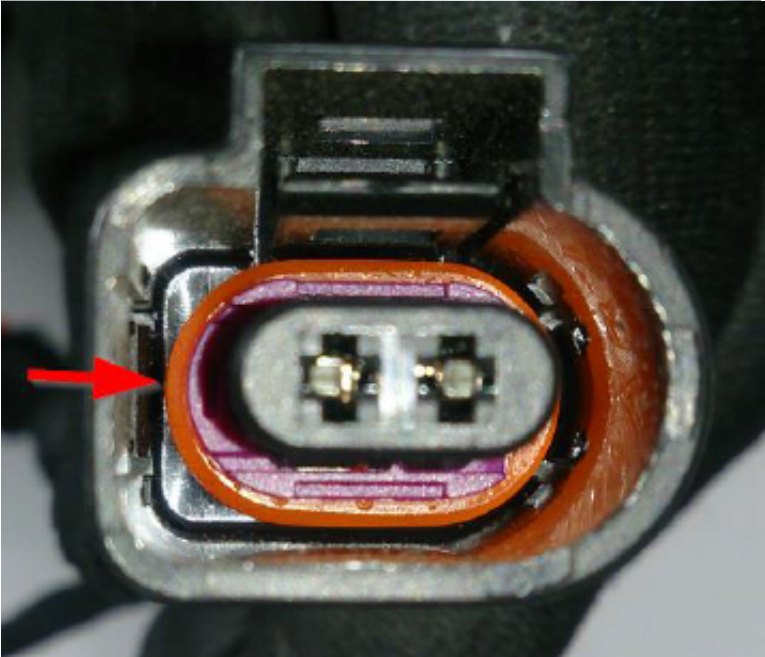


7. Insert the terminals in the connector. Respect the wire color code with correct connector position. Make sure they are fully inserted and locked.



Wire Color	Terminal Location
BK/YE	1
L-BU	2

8. Press the secondary lock back into position.



9. Mount the protective boot on the connector.





10. Connect the oil pressure switch connector on the oil pressure switch.

## Warranty:

Claim under regular warranty.

System: 10

Job: 00

Trouble part: 420201760

Part extra labor: 420201760 ..... 0.4hr

## Attachment:

---

**First Published By:** Dany Davey on 2015-12-10

**Last Modified By:** Dany Davey on 2015-12-10