

REFERENCE:	Nova Bus Manuals
SECTION:	09: Engine Starting Circuit
RS N°:	MQR 7621-981
EFFECTIVE IN PROD.:	L824 (2015SE)

APPLICATION DEADLINE:NA

SUBJECT:	External starter disabled through the IDS system when updating the BAE program.
JUSTIFICATION:	Starter motor defect

LEVEL	DESCRIPTION	DIRECT CHARGES		TIME
		LABOUR	MATERIAL	
1	Inform customers and provide starter disabling procedure through the IDS system.	-	-	
2	-	-	-	-

**MATERIAL**

QTY	PART N°	REV.	DESCRIPTION	REPLACES PART N°
<b>LEVEL 1</b>				
-		-		-
<b>LEVEL 2</b>				
-	-	-	-	-

**DISPOSAL OF PARTS**

REMOVED PARTS ARE:	DISCARDED	RETAINED	
	-	-	

**REVISION HISTORY**

REV.	DATE	CHANGE DESCRIPTION	WRITTEN BY
NR		Initial release	André Pelletier

**WARNING**

Nova Bus has been informed that certain Nova LFS vehicles may present a defect which relates to motor vehicle safety.

On certain vehicles equipped with a 35MT Remy Delco starter, Cummins engine, and hybrid transmission, the starter motor could overheat. This could result in an engine compartment fire causing injury and/or property damage.

The vehicles not covered by recall campaign CR3494 had their external starter disabled at the factory in accordance with the following procedure. Note: The vehicle can still be started through the hybrid transmission.

This interim measure addresses the potential safety related defect. Once the root cause is identified, a service program will be released and the appropriate repairs will be made to enable the starter. The solution will be applied to all affected vehicles, free of charge. The cost of labor will be reimbursed in accordance with warranty conditions in effect.

**WARNING**

A new BAE software update or installation would enable the external starter. In this case, it is important to perform to the following procedure once more.

**WARNING**

Follow your internal safety procedures.

## PROCEDURE

Procedure to disable the external starter through the IDS system.

- 1.1. Put the master control switch in position 1.



Figure 1 - Master Control Switch

- 1.2. Connect to the diagnostic port in the IB compartment, on the right side, on "Can B-C".
- 1.3. Start the IDS application.
- 1.4. Select "Adjust". See Figure 2.



Figure 2 - Select "Adjust"

- The starter status is visible in this field. See Figure 3. If the status is "Not installed", the procedure is finished. If the status is "Installed" proceed to the next steps.

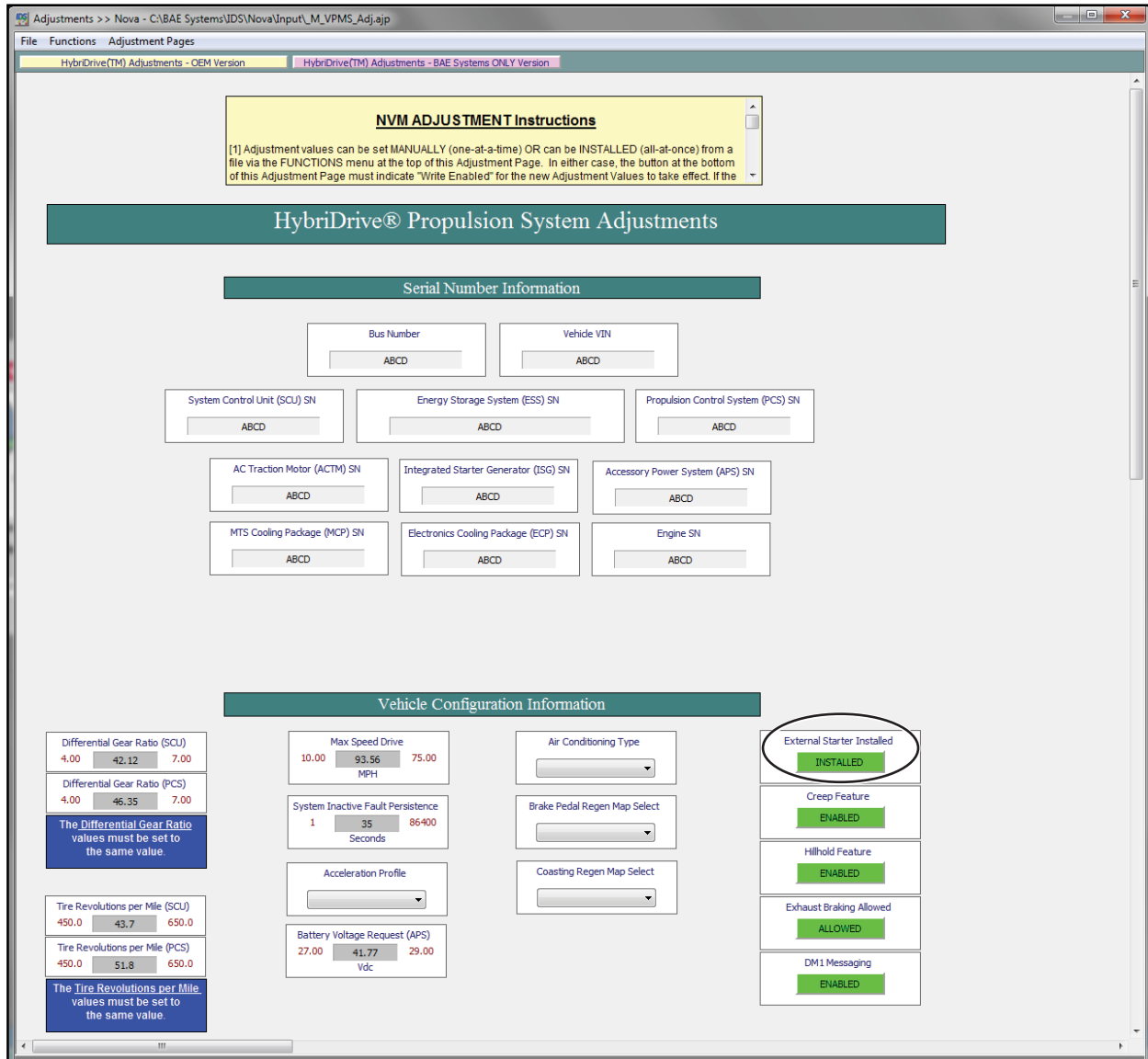


Figure 3 - Status Verification

1.6. Select "Write disabled" or F9. See Figure 4.

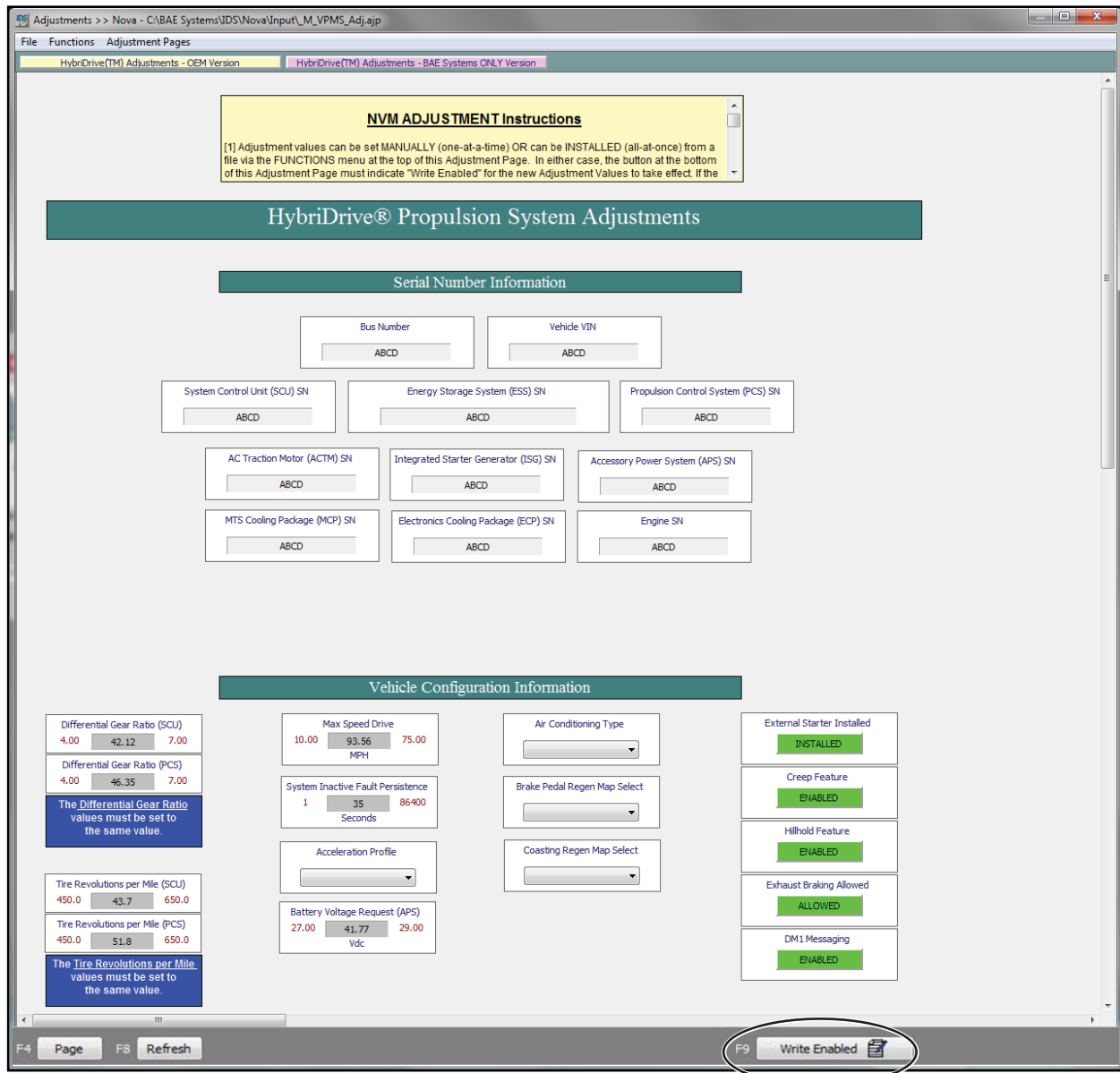


Figure 4 - Select F9

- In the "External Starter Installed" field, click the green button to change the status to "Not Installed". See Figure 5.

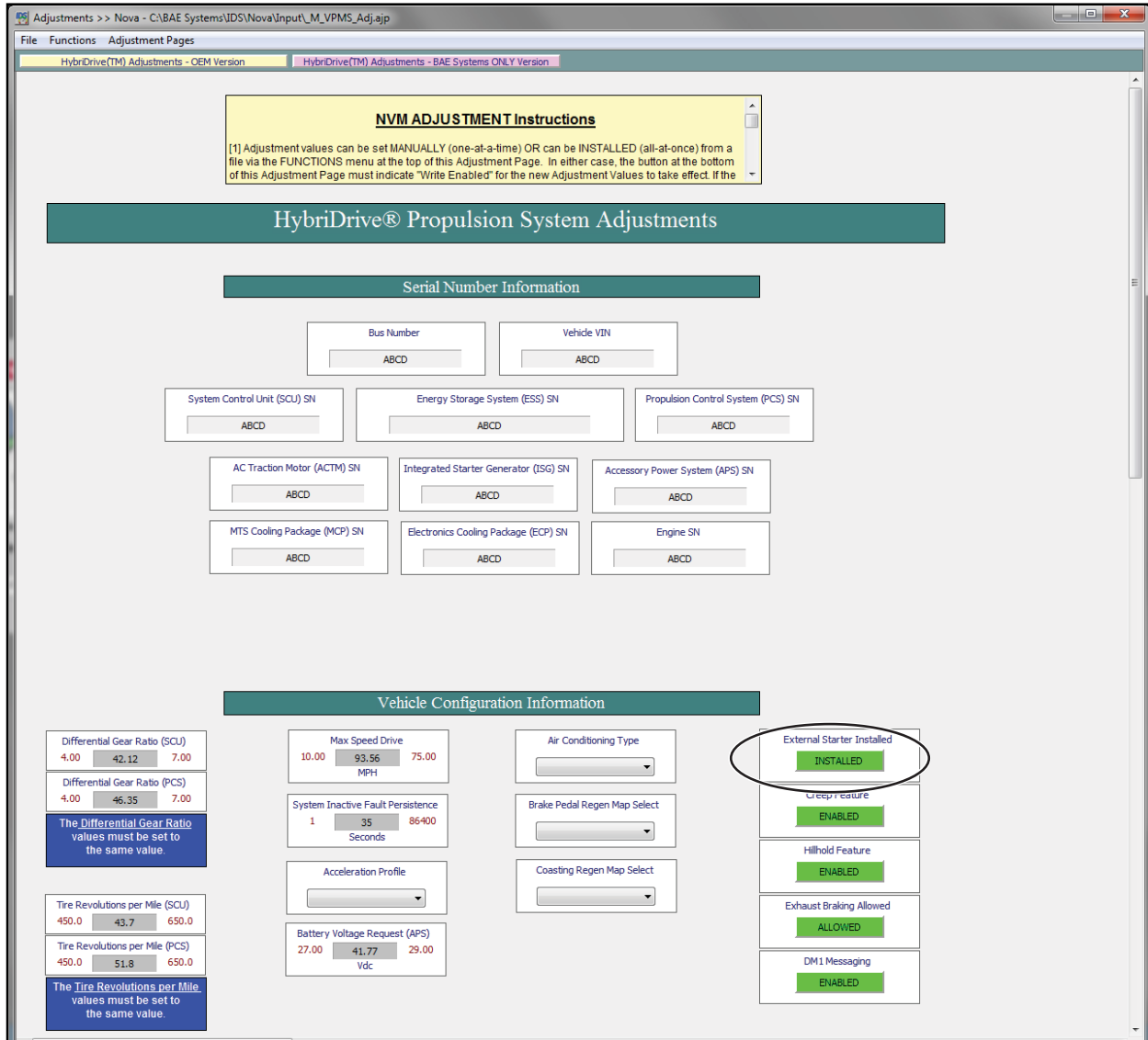


Figure 5 - Change to "Not Installed"

- 1.8. Put the master control switch in position 0 for 15 seconds. See Figure 1.
- 1.9. Put the master control switch back in position 1. See Figure 1.
- 1.10. Select "Refresh" or F8. See Figure 6.

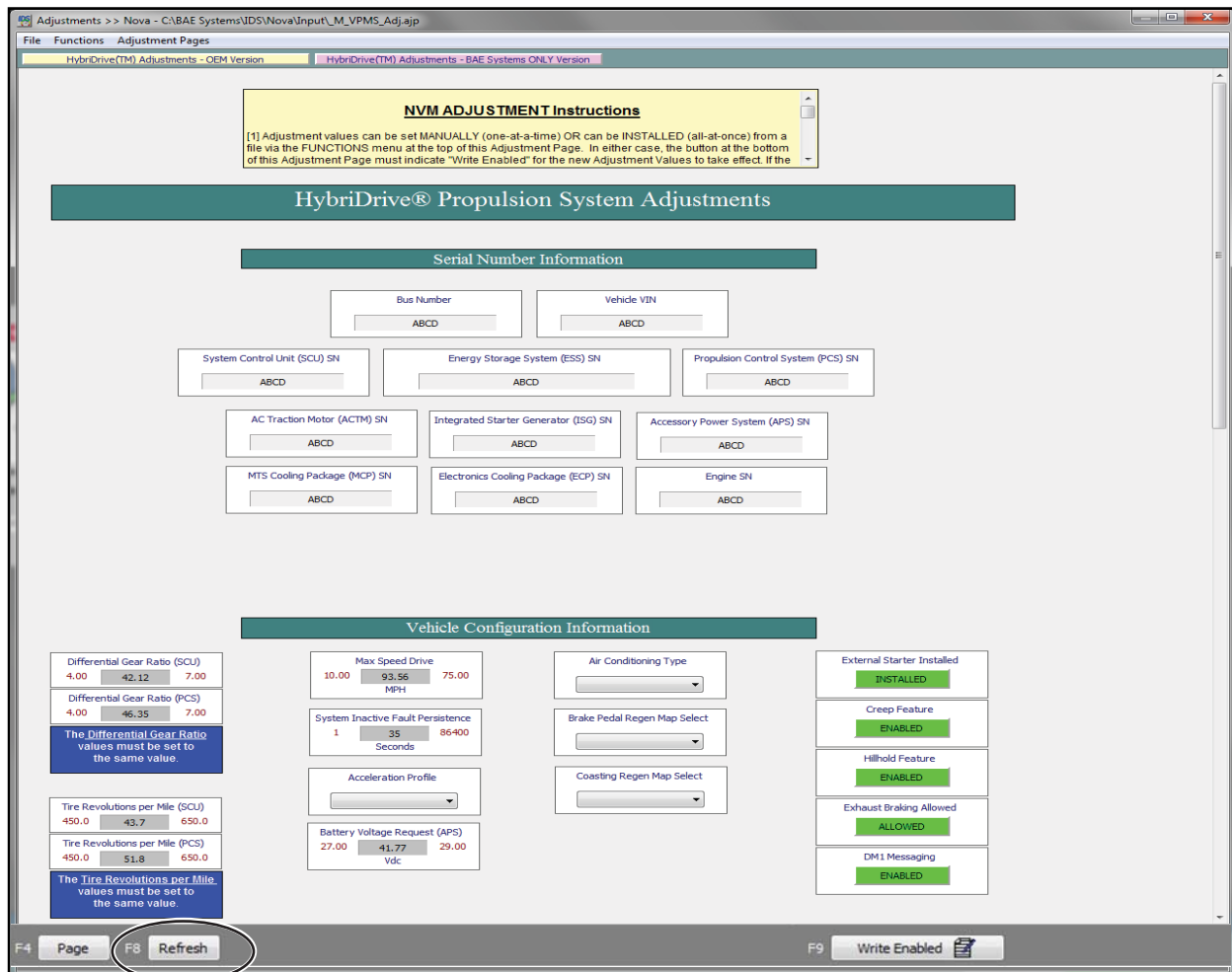


Figure 6 - Refresh screen

- 1.11. Close the IDS application and disconnect. ❖