

REFERENCE:	Nova Bus Manuals
SECTION:	16: Electrical System
RS N°:	MQR 7621-813
EFFECTIVE IN PROD.:	L859 (2014DE)

APPLICATION DEADLINE:NA

SUBJECT:	Battery cables
JUSTIFICATION:	Terminal lugs of the battery cables may crack due to stress.

LEVEL	DESCRIPTION	DIRECT CHARGES		TIME
		LABOUR	MATERIAL	
1	Replace with the newly improved battery cables.	Client	Client	30 min
2	-	-	-	-

**MATERIAL**

QTY	PART N°	REV.	DESCRIPTION	REPLACES PART N°
<b>LEVEL 1</b>				
1	N82782-01	-	BATTERY CABLE	-
6	N56339	-	CABLE TIE	-
1	N82783-01	-	BATTERY CABLE	-
<b>LEVEL 2</b>				
-	-	-	-	-

Materials will be available within 30 days. To order, please contact Prevost Parts by phone at 1-800-771-6682, by fax at 1-888-668-2555 or by email at prevostparts.commandes@volvo.com. Specify document number, quantity of parts required and shipping address.

**DISPOSAL OF PARTS**

REMOVED PARTS ARE:	DISCARDED *	RETAINED	* Dispose of the unused parts and the defective parts in accordance with local environmental standards in effect.
	Yes	-	

**REVISION HISTORY**

REV.	DATE	CHANGE DESCRIPTION	WRITTEN BY
NR	2015SE30	Initial release	Kumaraswamy K S
R1	2015DE02	Removal of parts N56836,N37749 and replacing G5007994 with N56339 in the material list.	Kumaraswamy K S

CLIENT	ORDER	ROAD NUMBER		VIN (2NVY/4RKY...)		QTY
		FROM	TO	FROM	TO	
New York City Transit - New York	L608	8000	8014	L82U6E [REDACTED]	L82U0E [REDACTED]	15
New York City Transit - New York	L620	8015	8074	L82U2E [REDACTED]	L82U7E [REDACTED]	60
New York City Transit - New York	L621	8075	8089	L82U9E [REDACTED]	L82U9E [REDACTED]	15
New York City Transit - New York	L643	5895	5895	S92U1E [REDACTED]	S92U1E [REDACTED]	1
New York City Transit - New York	L670	5770	5894	S92U9E [REDACTED]	S92UXC [REDACTED]	125
New York City Transit - New York	L681	5896	5283	S92U [REDACTED]	S92U9C4 [REDACTED]	122
New York City Transit - New York	L692	5284	5363	S92U3C [REDACTED]	S92U3D4 [REDACTED]	80

**WARNING**

Follow your internal safety procedures.

**PROCEDURE**

- 1.1. Locate and open the battery compartment door (see Figure 1).

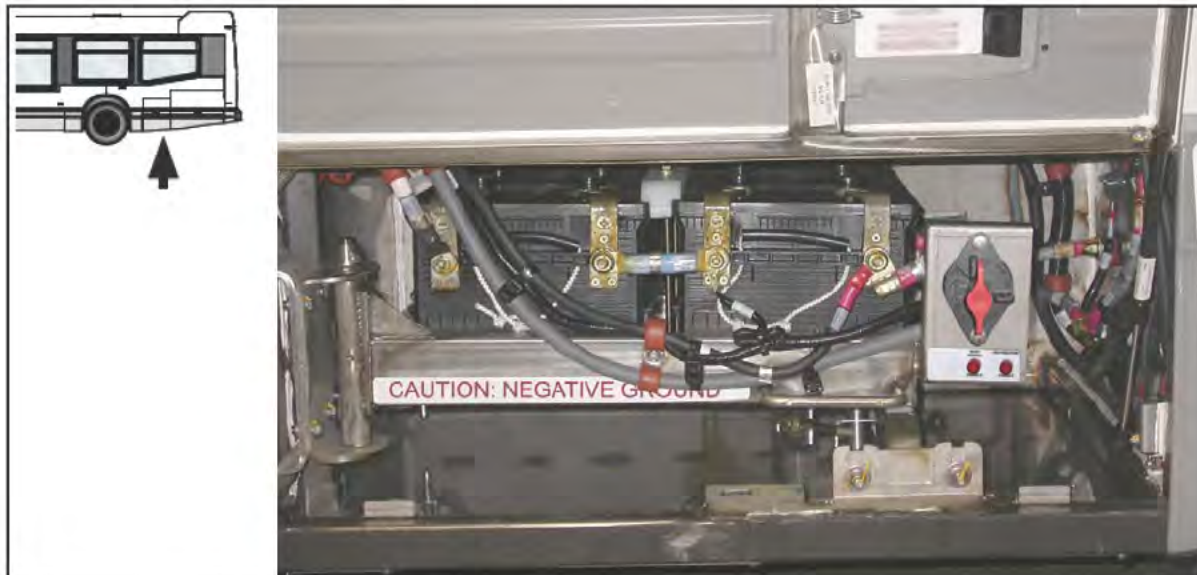


Figure 1 - Typical Battery Compartment

- 1.2. Set the battery disconnect switch in the battery compartment to the OFF position (see Figure 2).

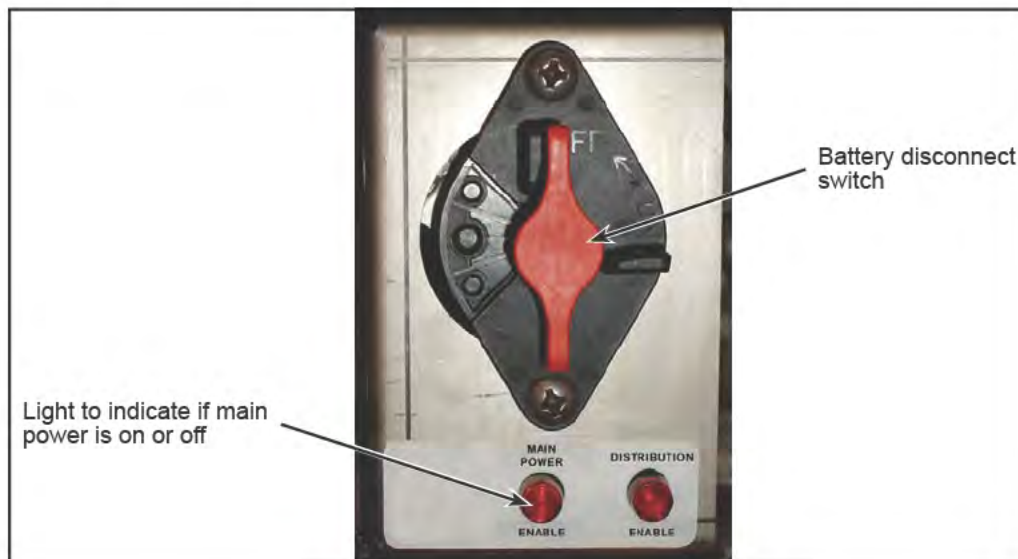


Figure 2 - Typical Battery Disconnect Switch

- 1.3. Disconnect the battery ground cable (see Figure 3). Insulate the terminals to avoid accidental grounding. Refer section 16: Electrical System of the Nova Bus maintenance manual for precautionary measures.



Figure 3 - Location of Battery Ground Cable

- 1.4. Loosen the main battery disconnect switch to gain access for easy removal of existing battery cables (see Figure 4).



Figure 4 - Loosening of Main Battery Disconnect Switch

- 1.5. Remove the existing battery cables as shown in Figure 5. Retain the nuts. Discard the cables.

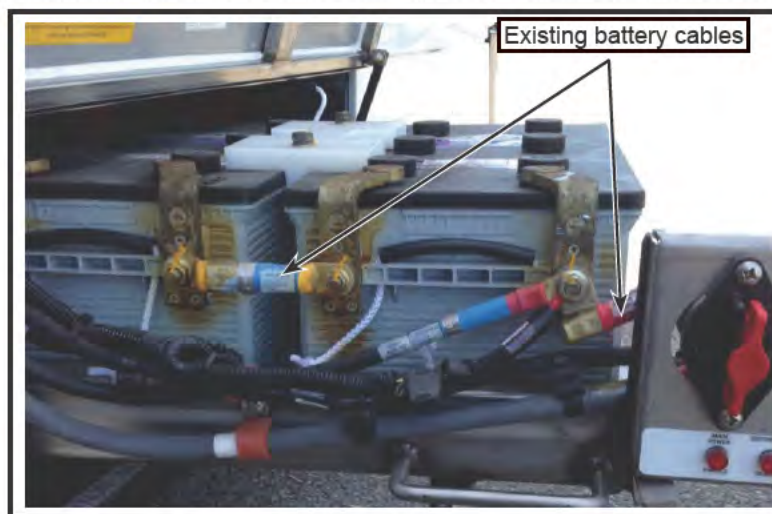


Figure 5 - Removal of Existing Battery Cables

- 1.6. Install N82782-01 battery cable between the battery disconnect switch and the battery. Do not tighten the nuts (see Figure 6).
- 1.7. Install 2x N56339 cable tie to support the battery cable (see Figure 6).

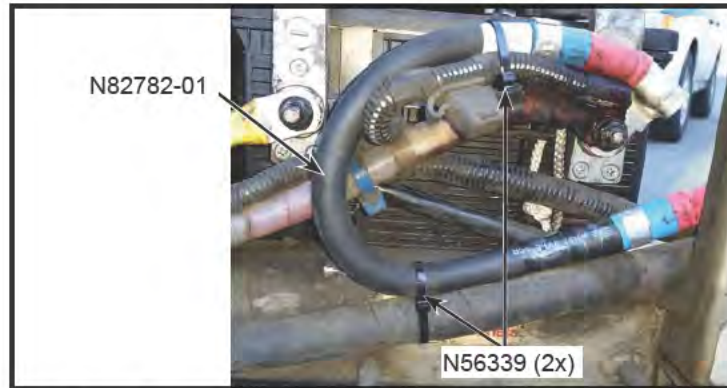


Figure 6 - Installation of New Battery Cable (N82782-01)

- 1.8. Tighten the battery cable nuts. See Figure 7 for torque specifications.

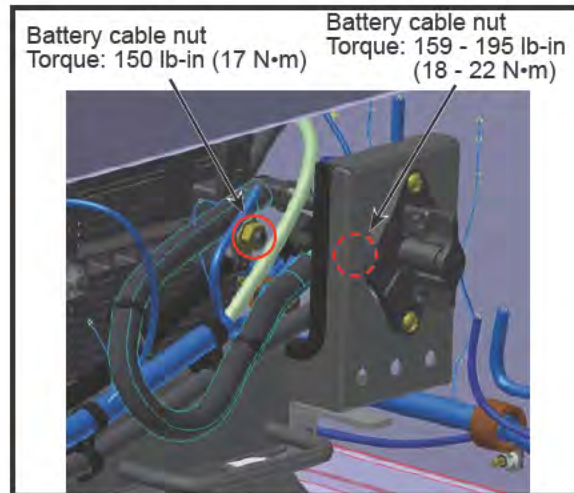


Figure 7 - Torque Values for Battery Connections

- 1.9. Install N82783-01 battery cable between the batteries. Install N56339 cable ties to support the battery cable. Do not tighten the nuts (see Figure 8).

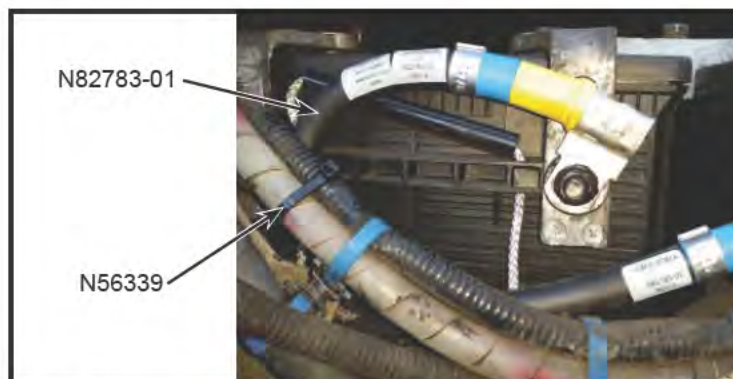


Figure 8 - Installation of New Battery Cable (N82783-01)

- 1.10. Tighten the battery cable nuts. See Figure 9 for torque specifications.



Figure 9 - Torque Values for Battery Connections

- 1.11. Apply loctite Maxi-Coat or the equivalent on the battery cable nuts.  
1.12. Connect the battery ground cable back to its original position (see Figure 10).

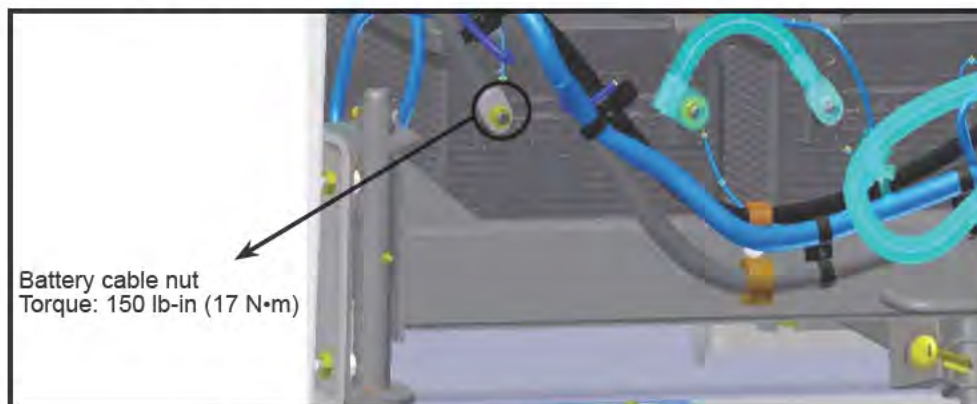


Figure 10 - Torque Values for Battery Connections

- 1.13. Set the battery disconnect switch in the battery compartment to the ON position.  
1.14. Close the battery compartment door.  
1.15. The vehicle may be returned to service.❖