

## High Soot Output MP7, MP8, MP10, US2014, OBD2015 CHU, CXU, GU, LEU, MRU, TD

### FSB 284-057, High Soot Output

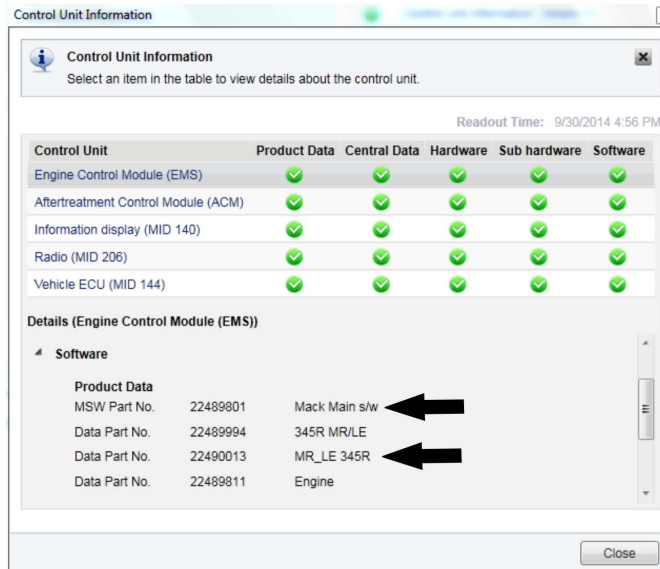
(May 2015)

On cold start up in ambient temperatures of -4°C (25°F) or less, MACK engines may experience rough running at lower than normal base idle speed. Under these conditions, excessive soot is being produced by the engine and may result in DPF clogging at a very rapid rate. Improved software has been released to address this condition. This bulletin applies to the following engines:

- MP7 engines built between February 7, 2014 and March 30, 2015
- MP8 and MP10 engines built between February 7, 2014 and May 11, 2015

**Note:** This bulletin does not apply to Mack Trucks Australia.

If a chassis is being operated in cold climate conditions and is experiencing the hard start and rough idle on startup, check the software level in the engine control module (ECM). Check for engine data part number as shown below and compare to the table information.



Control Unit	Product Data	Central Data	Hardware	Sub hardware	Software
Engine Control Module (EMS)	✓	✓	✓	✓	✓
Aftertreatment Control Module (ACM)	✓	✓	✓	✓	✓
Information display (MID 140)	✓	✓	✓	✓	✓
Radio (MID 206)	✓	✓	✓	✓	✓
Vehicle ECU (MID 144)	✓	✓	✓	✓	✓

**Details (Engine Control Module (EMS))**

Software

Product Data	MSW Part No.	Description
✓	22489801	Mack Main s/w
✓	22489994	345R MR/LE
✓	22490013	MR_LE 345R
✓	22489811	Engine

W2101882

**MP7 Conventional Chassis**

Data Part Number	US2014	22561635 or less	Proceed with software update
		22652626 or higher	Open an eService and report the issue
Main Software Part Number	OBD2015	22616343 or less	Proceed with software update
		22644017 or higher	Open an eService and report the issue

**MP7 Cabover Chassis**

Data Part Number	US2014	22560893 or less	Proceed with software update
		22652644 or higher	Open an eService and report the issue
Main Software Part Number	OBD2015	22573276 or less	Proceed with software update
		22644041 or higher	Open an eService and report the issue

**MP8 and MP10**

Data Part Number	US2014	22572319 or less	Proceed with software update
		22665162 or higher	Open an eService and report the issue
Main Software Part Number	OBD2015	22644017 or less	Proceed with software update
		22687466 or higher	Open an eService and report the issue

**Note:** A DPF Service Regeneration is required when programming is complete.

## Required Tools

- Premium Tech Tool version 2.03.85 or higher
- Vocom Diagnostic Connector 88890304
- Communication Interface 88890300

**Note:** Using other interfaces may affect programming speed.

**Note:** Check Premium Tech Tool version by clicking on Help tab and then click on “About Tech Tool”.

## Procedure



### DANGER

Do not attempt to repair or service this vehicle without having sufficient training, the correct service literature and the proper tools. Failure to follow this could make the vehicle unsafe and lead to serious personal injury or death.

**Note:** Information is subject to change without notice.

Illustrations are used for reference only and may differ slightly from the actual engine version. However, key components addressed in this information are represented as accurately as possible.

You must read and understand the precautions and guidelines in Service Information, Function Group 20, Engine Safety Practices, before performing this procedure. If you are not properly trained and certified in this procedure, ask your supervisor for training before you perform it.

- 1 Verify service program eligibility by checking service program status in VDA.
- 2 Secure the vehicle for service by parking it on a flat level surface, applying the parking brake, chocking the rear wheels, and placing the transmission in neutral or park.
- 3 Connect Premium Tech Tool (PTT) to the vehicle diagnostics connector using the 16 pin OBD cable 88890304 and Communication Interface 88890300. Connect the PC to a functional LAN or modem connection and a 120 Volt AC source.
- 4 Turn the ignition switch “ON”.
- 5 Log in to PTT and Identify Vehicle is displayed.

- 6 Once the vehicle has been identified, enter the Work Order Number information, then click Start Work.

Work Order Number

Enter a work order number or select a recently used work order number in the list.

Enter work order number:

Select a recently used work order:

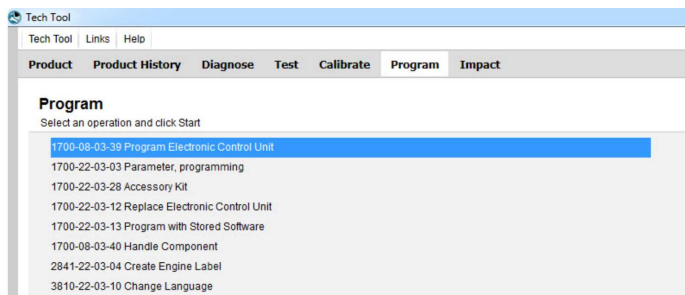
Work Order No	User ID	Date
---------------	---------	------

Enter Notes:

Start Work Cancel

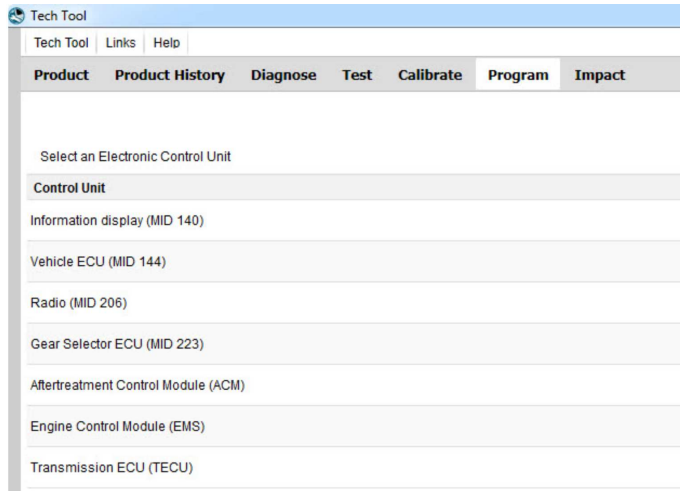
W2079940

- 7 From the Main Menu select Program and **then** Program Electronic Control Unit 1700-08-03-39. Then click Start.



W2079941

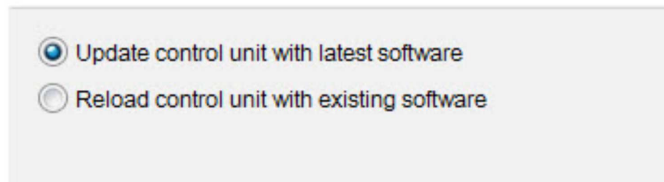
8 Select Engine Control Module (EMS).



W2079943

9 Select Program to update the ECM with the latest software.

### Programming options



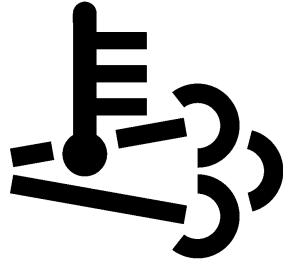
W2085461

10 Certain conditions must be met to continue with programming. When all conditions have been met, click Continue to proceed with programming.

11 When programming is complete, click Exit to return to Main Menu.

12 Select Test from the Main Menu. Select Function Group 2, Intake & Exhaust, Diesel Particulate Filter Service Regeneration and click on Start.

13 When regeneration is complete, allow engine to idle until high exhaust system temperature (HEST) light goes off.



W3007444

#### High Exhaust System Temperature (HEST)

14 Clear any diagnostic trouble codes (DTC) and Finish Work.

This repair may be eligible for reimbursement if a product failure was experienced within time and mileage limits of the applicable Warranty coverage. Reimbursement is obtained via the normal claim handling process.

Mack Trucks Inc. reserves the right to make any changes in design or to make additions to or upon its products without incurring any obligations to install the same on vehicles previously built.