

MP7 345R Throttle Delay at Cold Start LEU, MRU

FSB 284-062, MP7 345R Throttle Delay at Cold Start

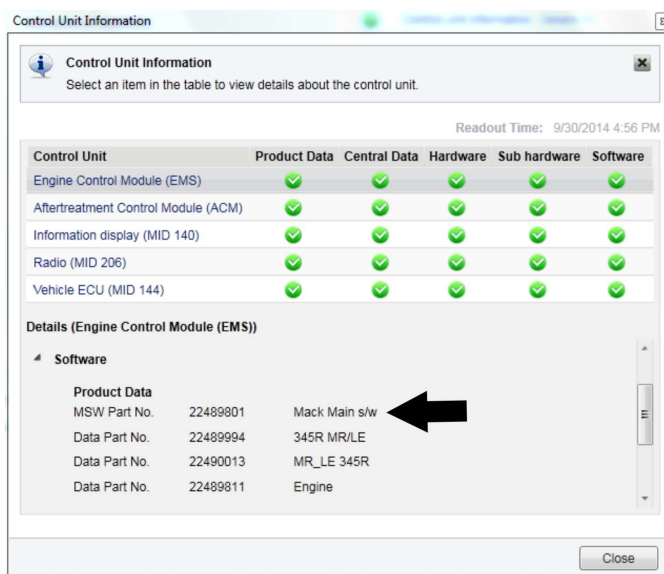
(July 2015)

Information

Certain MACK MP7 345R engines built between February 7, 2014 and July 6, 2015 may experience excessive throttle delay at start up during extremely cold ambient temperatures until normal engine operating temperatures are achieved. Improved software has been released to address this condition.

If a chassis is experiencing the throttle delay as described in this bulletin, check the software level in the engine control module (ECM). Check for engine main software part number as shown below and compare to the table information.

Note: This bulletin does not apply to Mack Trucks Australia



W2102733

Main Software Part Number	US2014 (Model Year 2015)	22572319 or less	Proceed with software update
		22665162 or higher	Open an eService and report the issue
	OBD2015 (Model Year 2016)	22644017 or less	Proceed with software update
		22687466 or higher	Open an eService and report the issue

Refer to service information in Function Group 284 to reprogram the engine control module (ECM).

Reimbursement

This repair may be eligible for reimbursement if a product failure was experienced within time and mileage limits of the applicable Warranty coverage. Reimbursement is obtained via the normal claim handling process.

MACK Trucks reserves the right to make any changes in design or to make additions to or upon its products without incurring any obligations to install the same on vehicles previously built.