

**ATTENTION:**  
 GENERAL MANAGER   
 PARTS MANAGER   
 CLAIMS PERSONNEL   
 SERVICE MANAGER

IMPORTANT - All Service Personnel Should Read and Initial in the boxes provided, right.


© 2014 Subaru of America, Inc. All rights reserved.



QUALITY DRIVEN® SERVICE

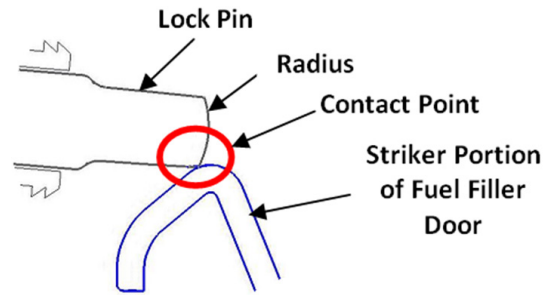
**SERVICE BULLETIN**

**APPLICABILITY:** 2015MY Legacy and Outback Models  
**SUBJECT:** Fuel Filler Door Difficult to Open or Close

**NUMBER:** 09-60-15  
**DATE:** 01/14/15

**INTRODUCTION**

This bulletin provides a repair procedure to address a customer concern of the fuel filler door being difficult to open or close. The procedure involves removing approximately 1mm of material from the end of the plastic locking pin portion of the fuel filler door latch mechanism.



**TOOLS REQUIRED:**

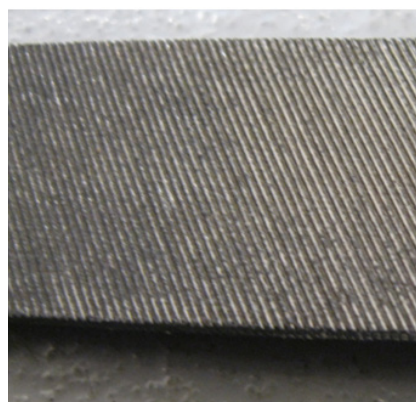
- 1 - Needle-Nose Locking Pliers (Small)



- 1 - Flat File (coarse)



- 1 - Flat File (fine)



- 1 - Small piece of Scotchbrite™



*Continued...*

**CAUTION: VEHICLE SERVICING PERFORMED BY UNTRAINED PERSONS COULD RESULT IN SERIOUS INJURY TO THOSE PERSONS OR TO OTHERS.**

Subaru Service Bulletins are intended for use by professional technicians ONLY. They are written to inform those technicians of conditions that may occur in some vehicles, or to provide information that could assist in the proper servicing of the vehicle. Properly trained technicians have the equipment, tools, safety instructions, and know-how to do the job correctly and safely. If a condition is described, DO NOT assume that this Service Bulletin applies to your vehicle, or that your vehicle will have that condition.

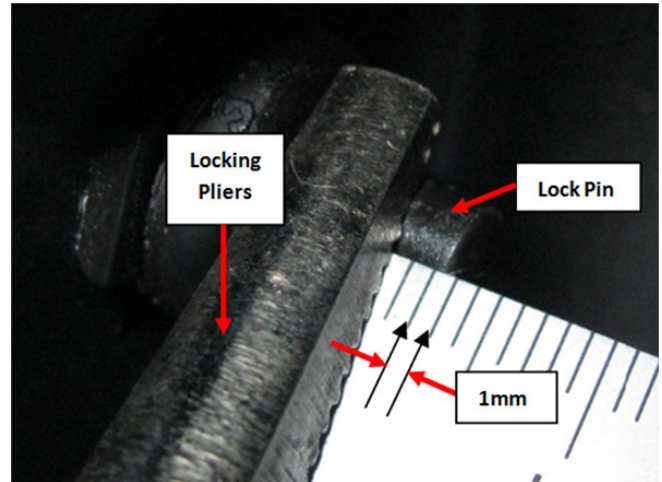
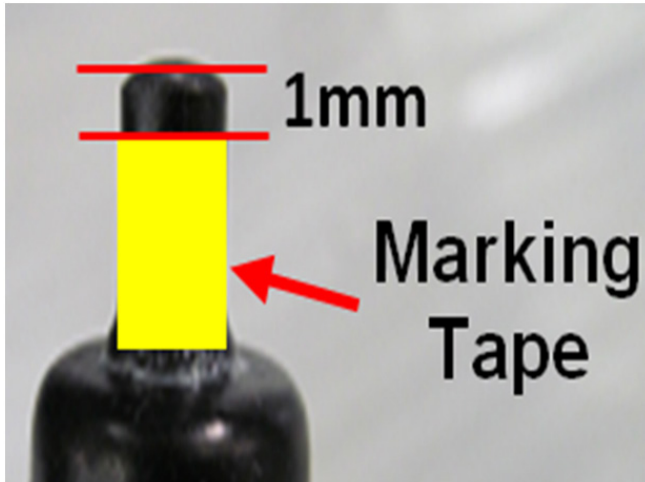
**SUBARU OF AMERICA, INC. IS ISO 14001 COMPLIANT**

ISO 14001 is the international standard for excellence in Environmental Management Systems. Please recycle or dispose of automotive products in a manner that is friendly to our environment and in accordance with all local, state and federal laws and regulations.

## SERVICE PROCEDURE / INFORMATION

This procedure involves **CAREFULLY** filing off 1mm of material from the end of the plastic lock pin. Once the pin has been shortened, the radius shown in the illustration below must be restored onto the end of the lock pin for proper operation and contact with the striker.

- Open the fuel filler door and wipe any grease from the lock pin.
- Using a small ruler as reference, determine how much material needs to be removed to shorten the lock pin by 1mm. Use tape (eg. a thin piece of electrical tape) as a “guide” to indicate how much needs to be removed as shown below. The electrical tape also serves to help protect the lock pin from damage by the pliers. Look at the radius (curvature) on the end of the lock pin as this will need to be recreated once the 1mm of material is removed.



- **CAREFULLY** install the locking pliers onto the lock pin.

**VERY IMPORTANT:** The lock pin is plastic and can easily become deformed / damaged if too much locking pressure is applied to hold it in place with the pliers.

**NOTE:** Always wear Safety Glasses and take necessary precautions to protect the vehicle finish in the area where you will be working as shown below.



*Continued...*





- When complete, blow away the filings with compressed air and remove the locking pliers.
- Apply a small amount of white grease on the lock pin for lubrication.
- Confirm the fuel door release opens and closes properly to complete the procedure.

**WARRANTY / CLAIM INFORMATION**

For vehicles within the Basic New Car Limited Warranty period, this repair may be claimed using the following information:

LABOR DESCRIPTION	LABOR OPERATION #	FAIL CODE	LABOR TIME
2015 MY Legacy & Outback Fuel Filler Door Locking Pin Modification	A915-512	SBD-48	0.4

**REMINDER:** SOA strongly discourages the printing and/or local storage of service information as previously released information and electronic publications may be updated at any time.

**Always refer to STIS for the latest service information before performing any repairs.**