

Rev A: May 28 2015:Changed application box.

EGR TEMPERATURE SENSOR REPLACEMENT AND HARNESS ROUTING Prevost vehicles

DESCRIPTION

For vehicles affected by this bulletin, eliminate connector pin movement and vibration by re-routing the temperature sensor engine harness lead. Also replace the EGR temperature sensor.

MODEL YEAR(S) AND VEHICLES INVOLVED

| NOTICE TO SERVICE CENTERS | |
|--|--|
| <i>Verify vehicle eligibility by checking warranty bulletin status with SAP or via ONLINE WARRANTY SYSTEM available on Service / Warranty tab of Prevost website.</i> | |
| Model | VIN |
| X3-45 Commuter Model Year : 2012 | From 2PCG33495CO [REDACTED] up to 2PCG33495CO [REDACTED] incl. |
| X3-45 Coaches Model Year : 2012 | Part of the PWT/ Diversified Fleet From 2PCG33497BO [REDACTED] up to 2PCG33495CO [REDACTED] |
| <p>This bulletin does not necessarily apply to all the above-mentioned vehicles, some vehicles may have been modified before delivery. The owners of the vehicles affected by this bulletin will be advised by a letter indicating the Vehicle Identification Number (VIN) of each vehicle concerned.</p> | |


MATERIAL NEEDED

Order kit SP15-322 which includes the following parts:

| Part No. | Description | Qty |
|----------|--|-----|
| 21164790 | TEMPERATURE SENSOR | 1 |
| 507664 | CABLE TIE / 3/16" 11" / DOUBLE LOOP HEAD | 3 |

| |
|---|
| NOTE |
| <i>Material can be obtained through regular channels.</i> |

PROCEDURE

| |
|---|
|  DANGER |
| <p>Park vehicle safely, apply parking brake, stop engine. In the battery box, set the battery cut-off switch to the OFF position prior to working on the vehicle.</p> |

- 1) On the engine, road side, locate this branch of the engine harness.

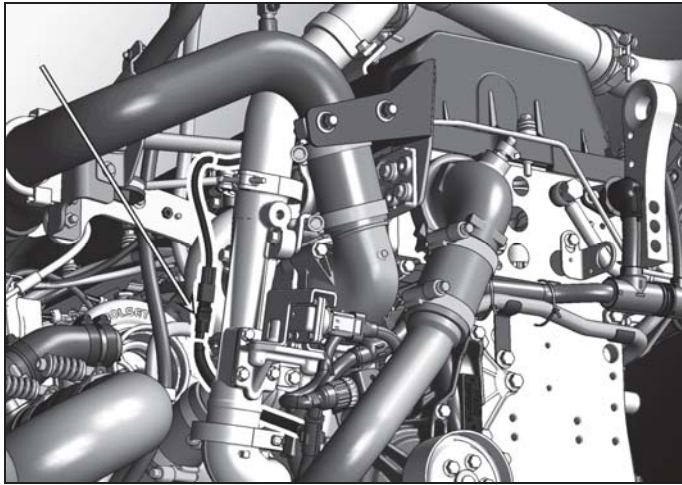


Figure 1 Location on engine.

- 2) Remove cable ties from harness.



Figure 2: Original Routing.

| Date | Expiration | Release | Page |
|---------|------------|---------|------|
| 05.2015 | 05.2017 | 5 | 3(5) |

- 3) Disconnect engine harness lead from EGR temperature sensor and pull down to allow re-routing.
- 4) Reroute it back up through the inboard side of the lower coolant transfer pipe and EGR cooler Exhaust outlet pipe.

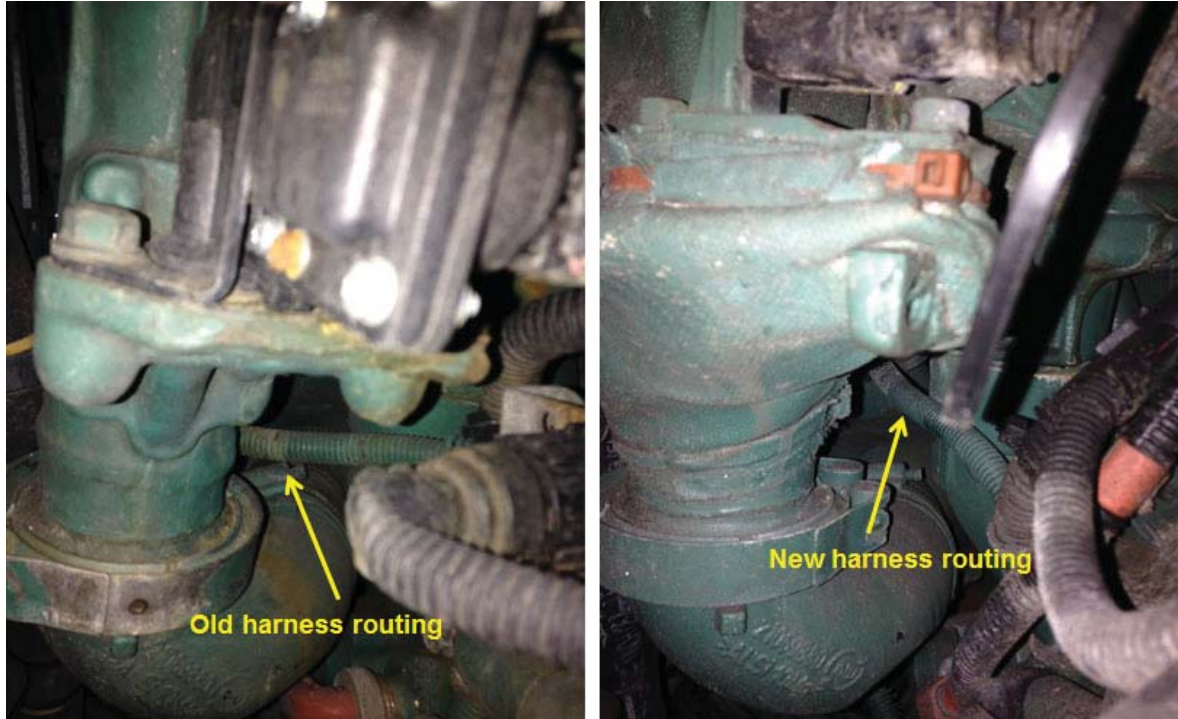


Figure 3

- 5) Replace the EGR temperature sensor with a new #21164790 (Tighten to 33 lbf-ft) then connect to harness

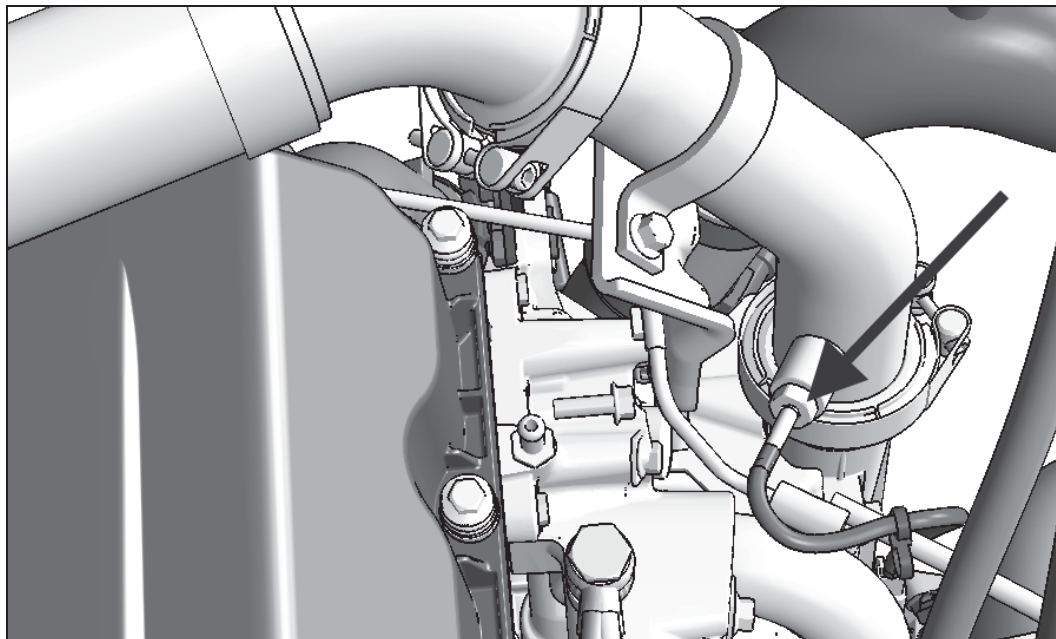


Figure 4

- 6) Secure to the EGR cooler coolant return pipe with supplied cable ties # 507664 (Fig. 2; 3)

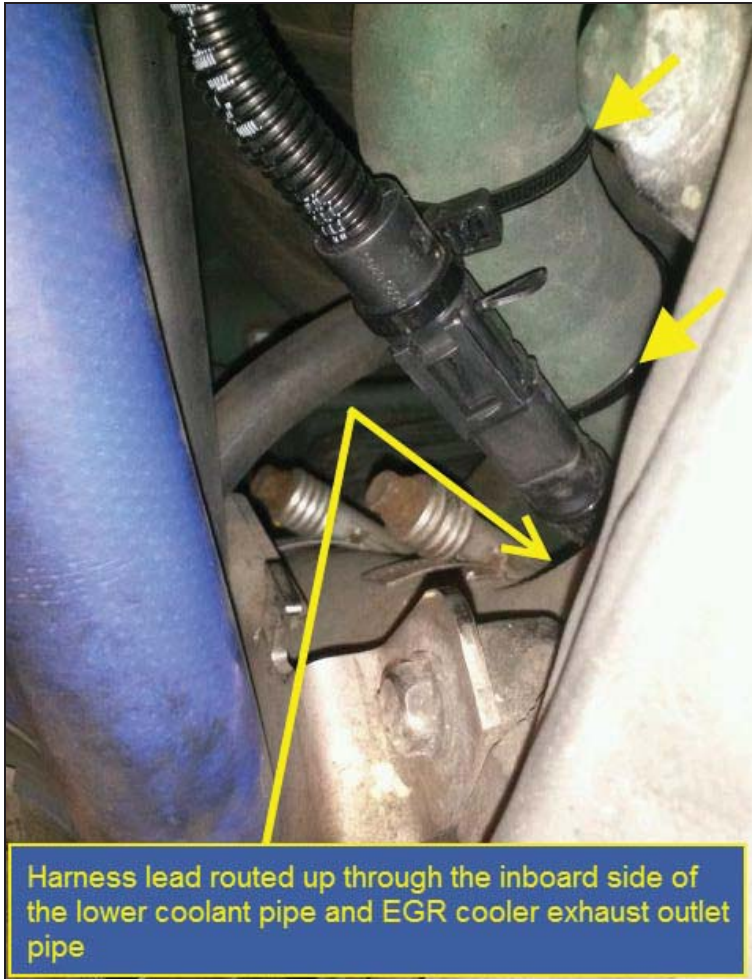


Figure 5

- 7) Return the battery cut-off switch to the ON position.
- 8) Hook up a laptop with PTT diagnostic software. Select operation **1700-08-03-32**, "Learned Data Reset" and reset the engine data. Select operation **2846-08-03-02** "Sensor Values Monitoring", run the engine for a minute or two and verify EGR temp reading. Clear any DTC's if applicable.

PARTS / WASTE DISPOSAL

Discard waste according to applicable environmental regulations (Municipal/State[Prov.]/ Federal)

ESTIMATED TIME

The time required to perform this special bulletin is approximately half an hour (30min).

OTHER

Special Bulletin

SP15-322A

| Date | Expiration | Release | Page |
|---------|------------|---------|------|
| 05.2015 | 05.2017 | 5 | 5(5) |

| | |
|------------------|----------|
| VBC Bulletin | N/A |
| Fail Code | 01.00-2 |
| Defect Code | 09 |
| System Condition | B |
| Causal Part | 21164790 |

Prevost engages in a continuous program of testing and evaluating to provide the best possible product. Prevost, however, is not committed to, or liable for updating existing products.