



Service Bulletin

File in Section: -

Bulletin No.: PIT5457

Date: September, 2015

PRELIMINARY INFORMATION

Subject: Service ABS / TCS / Power Steering and/or Suspension Message DTC U0077 U0121 U0126 U0131 U0139 U0401 U0415 U0428 (Circuit 5986 High Resistance)

Models: 2015 Cadillac Escalade Models
2014 Chevrolet Silverado 1500
2015 Chevrolet Silverado, Suburban, Tahoe
2014 GMC Sierra 1500
2015 GMC Sierra, Yukon Models

The following diagnosis might be helpful if the vehicle exhibits the symptom(s) described in this PI.

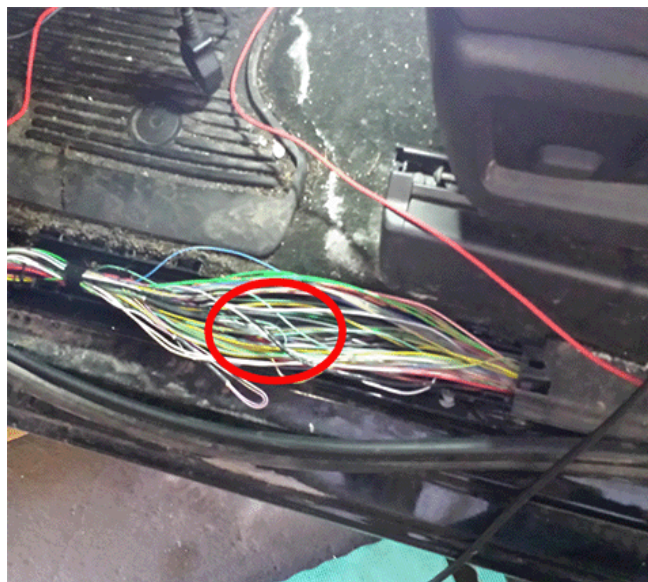
Condition/Concern

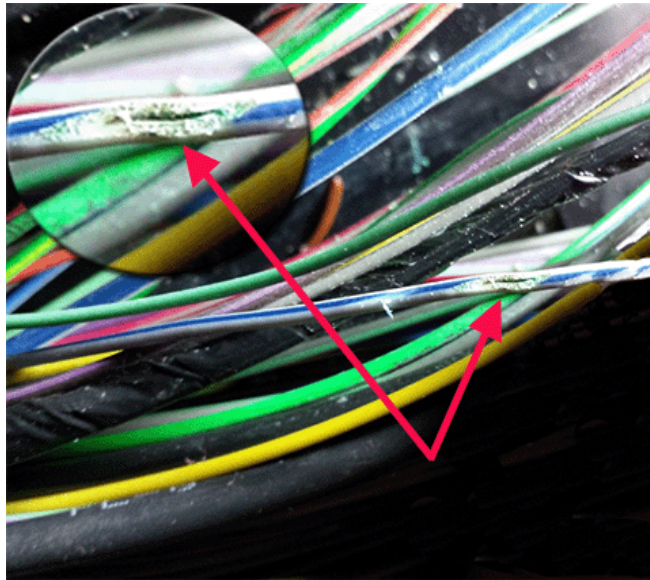
Some owners may comment on any of the following issues:

- Service ABS and/or Traction control lights/message on.
- Service Power Steering System, if equipped with electric power steering
- Service Suspension System, if equipped with RPO Z95.
- Loss of communication with EBCM, SWPS, PSCM, and/or SCM (if equipped).
- Communication DTC's: U0077 U0121, U0126, U0131, U0139, U0401, U0415, and/or U0428

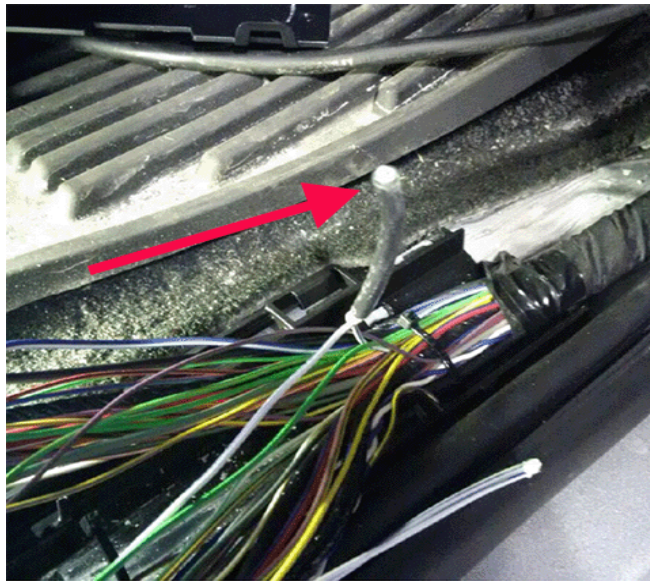
These concerns could be caused by high resistance/open in the Communication Enable circuit 5986. The BCM activates this circuit when the ignition key is in ACC, ON, and START positions (There will be voltage present in the OFF position only for a short time until the BCM goes to sleep). The communication enable circuit wakes up the module for serial data bus communication. Circuit 5986 will have approximately 12 volts and should light a test light, but is not designed to handle heavier electrical loads like a headlight bulb. Shown below are two known areas where circuit 5986 has been found to be open or have high resistance:

1. Under the driver's sill plate
2. Splice J365 located under the passenger front sill plate





4212571



4215042

Recommendation/Instructions

Monitor the voltage on the communication enable circuit 5986 at any of the modules affected, example EBCM, PSCM, and/or SCM. If low voltage or no voltage is present when the concern occurs, inspect for high resistance under the driver's or passenger's sill plate area. Repair any opens or high resistance in the circuit.

Warranty Information

Please refer to latest version of bulletin 10-00-89-005 for warranty information on wire/connector repairs. Please follow this diagnostic or repair process thoroughly and complete each step. If the condition exhibited is resolved without completing every step, the remaining steps do not need to be performed.