

FORD:

2011-2015 Fiesta

2012-2015 Focus

This article supersedes TSB **15-0090** to update the Service Procedure and Service Labor Time Standards (SLTS).

ISSUE

Some 2011-2015 Fiesta vehicles built on or before 10/15/2014 and 2012-2015 Focus vehicles equipped with a DPS6 automatic transmission may exhibit excessive transmission clutch shudder on light acceleration. Some vehicles may or may not exhibit transmission fluid leaking from the clutch housing.

ACTION

Follow the Service Procedure steps to correct the condition.

SERVICE PROCEDURE

With the release of Customer Satisfaction Program 15B22 if a vehicle is being serviced using this article, the powertrain control module (PCM)/transmission control module (TCM) reprogramming and clutch adaptive learn strategy updates required in in 15B22 are completed. Therefore, it is not necessary to perform 15B22 separately and 15B22 should not be claimed. It will be closed when the labor operations for this article are claimed.

Refer to Workshop Manual (WSM), Section 307-01 for 2012-2015 Focus and 2014-2015 Fiesta. For 2011-2013 Fiesta refer to WSM, Section 307-11. When referred to the WSM all steps listed in the WSM must be performed.

1. **NOTE:**

PERFORMING THE SERVICE ROUTINES WILL CLEAR ADAPTIVE STRATEGY. FAILURE TO PERFORM ALL STEPS OF THE IDS ROUTINES MAY RESULT IN ERRATIC SHIFTS AND DRIVEABILITY CONCERNS.

Reprogram the PCM/TCM to the latest calibration using IDS release 96.03 or higher. Make sure you are connected to the internet when entering module programming to obtain the latest updates. Calibration files may also be obtained at www.motorcraftservice.com.

- a. IDS software updates have been made to streamline the process and improve DPS6 Shudder diagnostics and reprogramming.
 - b. Adjust the vehicle clock as required, it may have lost time during the reprogramming process.
2. Using IDS follow the WSM Diagnosis and Testing, Diagnosis by Symptom, Pinpoint Test A (Focus, 2014-15 Fiesta) or Pinpoint Test N (2011-2013 Fiesta) - Clutch Shudder on Acceleration to diagnose shudder.
- a. Save and upload IDS Session Data.
 - b. New vehicles with less than 1600 km (1000 miles) have not fully completed the clutch friction green clutch break-in period that is required before attempting to replace the clutch or hardware.
 - c. Vehicles built on 6/6/2013 or later have the improved transmission input shaft seals that are unlikely to experience leaks and should only be replaced if leaking.

NOTE: FORD AND LINCOLN DEALERSHIPS NEED TO OBTAIN PRIOR APPROVAL BEFORE PROCEEDING WITH THE INSTALLATION OF A NEW CLUTCH AFTER CLEANING. SAVE AND UPLOAD IDS SESSION DATA CAPTURED FROM THE POST CLUTCH CLEANING VALIDATION IN THE PINPOINT TEST FOR USE IN THE PRIOR APPROVAL PROCESS. (FIGURE 1)

NOTE: The information contained in Technical Service Bulletins is intended for use by trained, professional technicians with the knowledge, tools, and equipment to do the job properly and safely. It informs these technicians of conditions that may occur on some vehicles, or provides information that could assist in proper vehicle service. The procedures should not be performed by "do-it-yourselfers". Do not assume that a condition described affects your car or truck. Contact a Ford, Lincoln, or Mercury dealership to determine whether the bulletin applies to your vehicle. Warranty Policy and Extended Service Plan documentation determine Warranty and/or Extended Service Plan coverage unless stated otherwise in the TSB article. The information in this Technical Service Bulletin (TSB) was current at the time of printing. Ford Motor Company reserves the right to supersede this information with updates. The most recent information is available through Ford Motor Company's on-line technical resources.

WARNING: BRAKE PARTS CLEANER PM-4-A IS IRRITATING TO THE SKIN, EYE AND RESPIRATORY TRACT. THIS PRODUCT MAY CAUSE CENTRAL NERVOUS SYSTEM DEPRESSION. ALWAYS CONSULT THE MATERIAL SAFETY DATA SHEET BEFORE USE. DUE TO THE VOLUME OF PM-4-A USED DURING THE CLEANING PROCEDURE, THE OPERATOR MUST ENSURE ADEQUATE LOCAL VENTILATION. THE OPERATOR MUST WEAR AN ORGANIC CARTRIDGE WITH PARTICLE FILTER RESPIRATOR, EYE PROTECTION (CHEMICAL GOGGLES), NEOPRENE GLOVES, AND LONG SLEEVES. FAILURE TO FOLLOW THESE INSTRUCTIONS MAY RESULT IN SERIOUS PERSONAL INJURY.

WARNING: KEEP SOLVENTS AWAY FROM IGNITION SOURCES. SOLVENTS MAY BE FLAMMABLE AND CAN IGNITE OR EXPLODE IF NOT HANDLED CORRECTLY. FAILURE TO FOLLOW THIS INSTRUCTION MAY RESULT IN SERIOUS PERSONAL INJURY.

NOTE: Transmission differential seal plugs are now released and should be installed during transmission removal and while performing bench repairs to reduce/eliminate the loss of transmission fluid.

[1] - Use of either part is acceptable for the repair.

PART NUMBER	PART NAME
BV6Z-7B546-F	Dual Clutch Assembly Kit - Focus & Fiesta built on or after 1/13/2011
AE8Z-7B546-E	Dual Clutch Assembly Kit for Fiesta built on or before 1/12/2011
EV6Z-7052-A Or C	Focus Seal Kit - (Figure 2) Required For All Clutch And Seal Repairs [1]
EV6Z-7052-B Or D	Fiesta Seal Kit - (Figure 2) Required For All Clutch And Seal Repairs [1]
AE8Z-7007-A	Engine-to-Transaxle Separator Plate – 1.6L
XT-11-QDC	Motorcraft® Dual Clutch Transmission Fluid
PM-4-A	Motorcraft® Metal Brake Parts Cleaner (As Needed)
XL-2	Motorcraft® High Temperature Nickel Anti-Seize Lubricant
F1FZ-7H183-A	Differential Seal Plug (2-req, can be used for multiple repairs)
BE8Z-6731-AB	Motorcraft® Oil Filter FL-910S
XO-5W20-QSP	Motorcraft® SAE 5W-20 Premium Synthetic Blend Motor Oil (1-quart)
1S7Z-6840-AA	Oil Filter Adapter Gasket - Focus
BE8Z-6L621-A	Oil Cooler Assembly Seal-Fiesta (As Needed)

OPERATION	DESCRIPTION	TIME
150120H	2012-2015 Focus/2011-2015 Fiesta DPS6: Reprogram The PCM/TCM, Perform Pinpoint Test Per WSM Procedure, Release The Vehicle, Within Expected Limits (Closes FSA 15B22, Do Not Use With Any Other Labor Operations)	1.1 Hrs.
150120L	2012-2015 Focus/2011-2015 Fiesta DPS6: Reprogram The PCM/TCM, Perform Pinpoint Test Per WSM Procedure, Outside Of Expected Limits (Closes FSA 15B22, Do Not Use With Any Other Labor Operation Except M, N, P or Q)	1.1 Hrs.
150120M	2012-2015 Focus DPS6: Replace Clutch, Includes Post Road Test (Do Not Use With Any Other Labor Operation Except L)	5.0 Hrs.
150120M	2011-2015 Fiesta DPS6: Replace Clutch, Includes Post Road Test (Do Not Use With Any Other Labor Operation Except L)	4.5 Hrs.
150120N	2012-2015 Focus DPS6: Replace Both Inner Input Shaft Seals And Clutch, Includes Post Road Test (Do Not Use With Any Other Labor Operation Except L)	5.4 Hrs.

TSB 15-0120 (Continued)

OPERATION	DESCRIPTION	TIME
150120N	2011-2015 Fiesta DPS6: Replace Both Inner Input Shaft Seals And Clutch, Includes Post Road Test (Do Not Use With Any Other Labor Operation Except L)	4.9 Hrs.
150120P	2011-2015 Focus DPS6: Replace Both Inner Input Shaft Seals And Clean Clutch, Perform Pinpoint Test Per WSM Procedure After Cleaning (Do Not Use With Any Other Labor Operation Except L and Q)	6.2 Hrs.
150120P	2011-2015 Fiesta DPS6: Replace Both Inner Input Shaft Seals And Clean Clutch, Perform Pinpoint Test Per WSM Procedure After Cleaning (Do Not Use With Any Other Labor Operation Except L and Q)	5.7 Hrs.
150120Q	2012-2015 Focus DPS6: Replace Clutch, This Operation Requires A Prior Approval Code And Is Included, Can Only Be Claimed With Operations P and L When Shudder Is Present Over 250 RPM After Clutch Cleaning. Includes Post Road Test (Do Not Use With Any Other Labor Operation Except L and P)	5.4 Hrs.
150120Q	2011-2015 Fiesta DPS6: Replace Clutch, This Operation Requires A Prior Approval Code And Is Included, Can Only Be Claimed With Operations P and L When Shudder Is Present Over 250 RPM After Clutch Cleaning, Includes Post Road Test (Do Not Use With Any Other Labor Operation Except L and P)	4.9 Hrs.

WARRANTY STATUS:

Eligible Under Provisions Of New Vehicle Limited Warranty Coverage

Warranty/ESP coverage limits/policies/prior approvals are not altered by a TSB. Warranty/ESP coverage limits are determined by the identified causal part and verified using the OASIS part coverage tool.

DEALER CODING

BASIC PART NO.	CONDITION CODE
7B546	42

Ford & Lincoln Dealership DPS6 Transmission Clutch Prior Approval Submission Process

ONLY REQUIRED WITH LABOR OPERATION Q CLUTCH REPLACEMENT AFTER CLUTCH CLEANING

1. Access the Professional Technician Society (PTS) to submit a Prior Approval Request.
 2. Select the Vehicle ID tab.
 3. Run OASIS, by entering the VIN and an applicable symptom code and select "GO".
 4. Scroll to the very bottom of the OASIS report and select "Prior Approval".
 5. Select "Continue" to advance to the next page.
 6. Select "DPS6 Clutch TSB" under the "Powertrain Components" heading.
 7. The subsequent pages will ask for additional information regarding the vehicle and warranty coverage, select the proper responses using the available resources.
 8. The prior approval form will appear preloaded with the vehicle information.
 9. Answer all questions and drop down selections on the form, providing the most accurate and detailed descriptions.
 10. Enter a cell phone number and provider if you would like a text message when a response has been posted to PTS.
- NOTE: Adding a phone number is not required to submit the request form.
11. Check back on PTS for your reply, under Home > Tech Hotline > Prior Approval Status.

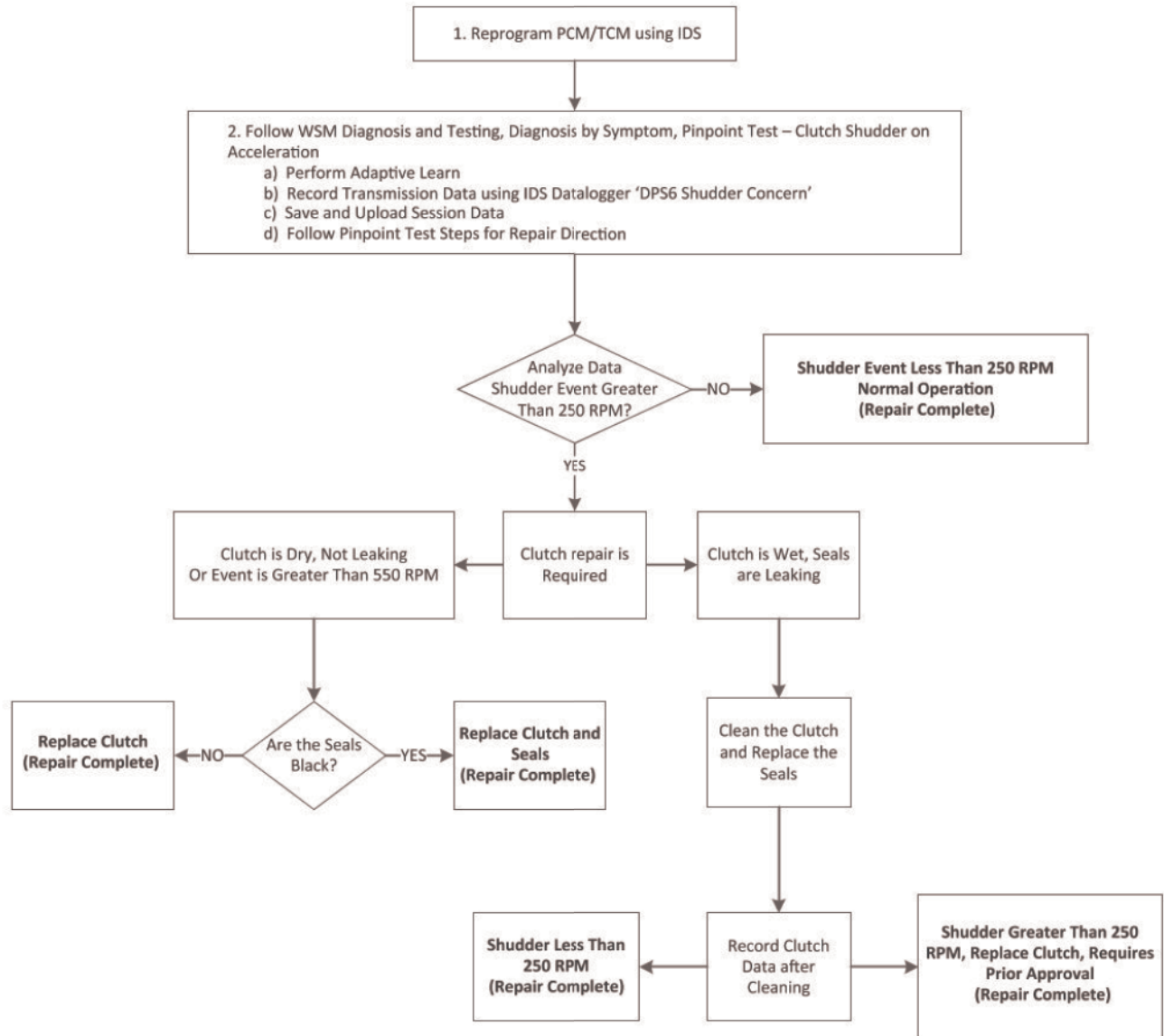
TB10560B

SEAL KIT CONTENTS

Focus Seal Kit (EV6Z-7052-A or EV6Z-7052-C)	Kit Qty	Part Number
Input Shaft Seal Inner	1	AE8Z-7052-C or AE8Z-7052-D
Clutch-To-Hollow Input Shaft Snap Ring	1	AE8Z-7064-A
Input Shaft Seal Outer	1	AE8Z-7048-B or AE8Z-7048-C
Clutch Snap Ring (Replace If Reusing Original Clutch)	1	AE8Z-7064-B
Transaxle Input Shaft/Spline Lubricant	1	9U7Z-19A506-BA
Flexplate-To-Clutch Nut	6	W705448-S441
Bearing Retainer Strap	1	YS4Z-3N324-AA
Bearing Retainer Strap Nut	2	W520102-S442
Halfshaft Seal Kit	2	AE8Z-1S177-A or AE8Z-1S177-B
Ball Joint Bolt	2	W715491-S442
Ball Joint Nut	2	W520415-S442
Fiesta Seal Kit (EV6Z-7052-B or EV6Z-7052-D)	Kit Qty	Part Number
Input Shaft Seal Inner	1	AE8Z-7052-C or AE8Z-7052-D
Clutch-To-Hollow Input Shaft Snap Ring	1	AE8Z-7064-A
Input Shaft Seal Outer	1	AE8Z-7048-B or AE8Z-7048-C
Clutch Snap Ring (Replace If Reusing Original Clutch)	1	AE8Z-7064-B
Transaxle Input Shaft/Spline Lubricant	1	9U7Z-19A506-BA
Flexplate-To-Clutch Nut	6	W705448-S441
Bearing Retainer Strap	1	YS4Z-3N324-AA
Bearing Retainer Strap Nut	2	W520102-S442
Halfshaft Seal Kit	2	AE8Z-1S177-A or AE8Z-1S177-B
Exhaust Gasket	1	2S6Z-9450-A
Exhaust Nut	2	W703662-S403
Ball Joint Bolt	2	W709618-S442
Ball Joint Nut	2	W520203-S442

TB10561B

Figure 2 - Article 15-0120



TB10657A

Figure 3 - Article 15-0120