



ENTEGR A
COACH®

TECHNICAL SERVICE BULLETIN

TSB#: 15-023 Job Code: 9803270 Flat Rate: 3 hr

Date of Publication: December 2015

NOTE: This Technical Service Bulletin will be valid within (1) year from the original date of publication.

ACTION REQUIRED: Add gate valve and modify macerator hose connection.

MODELS / UNITS:

2016 Aspire Class A Motorhome	G33B	44B	8051-8080
	G33H	42DEQ	8051-8060
	G33N	42RBQ	8051-8062
	G33P	40P	8051
	G33R	44R	8051
	G33U	44U	8051-8058
2016 Anthem Class A Motorhome	G34B	44B	8051-8111
	G34D	44DLQ	8052-8066
	G34H	42DEQ	8051-8060
	G34L	44L	8051-8056
	G34N	44RBQ	8052-8076
2016 Cornerstone Class A Motorhome	G36A	45A	8052-8061
	G36B	45B	8051-8082
	G36J	45J	8051-8053
	G36K	45K	8051, 8052

KIT CONTENTS

Kits will be shipped to the retail owner.

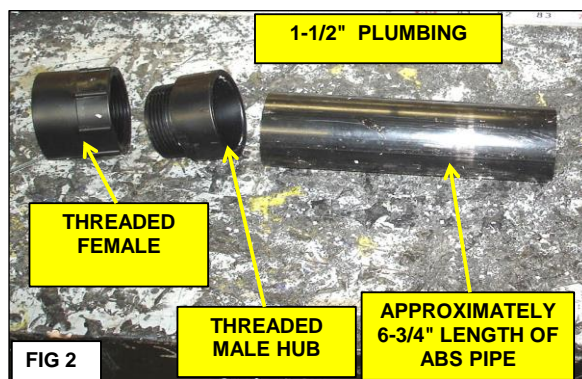
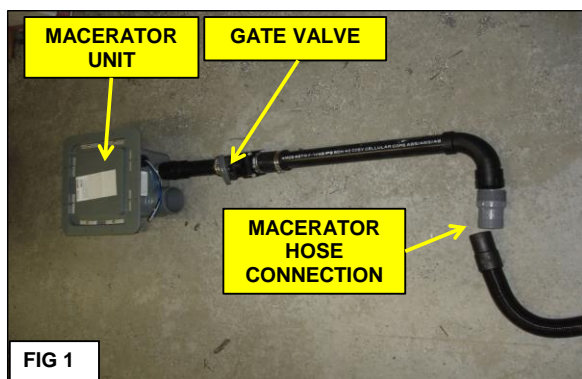
- 1 1-1/2" ABS Male threaded hub
- 20" 1-1/2" ABS pipe (1 pc 13-1/4", and 1 pc 6-3/4")
- 2 1-1/2" Rubber couplers (for gate valve)
- 1 1-1/2" ABS Gate valve
- 1 1-1/2" ABS Long turn street elbow
- 1 1-1/2" ABS Threaded barb fitting
- 1 1-1/2" ABS Female threaded coupler
- 1 Replacement flexible macerator hose

TOOLS/MATERIAL REQ.:

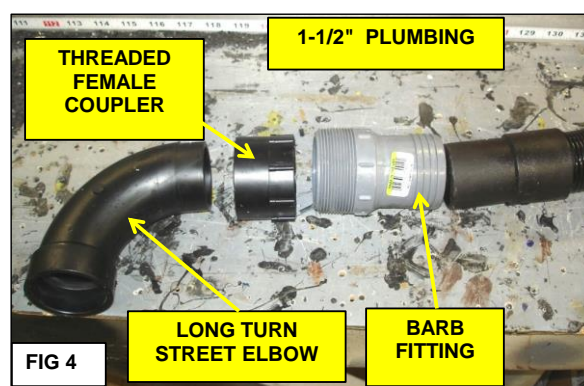
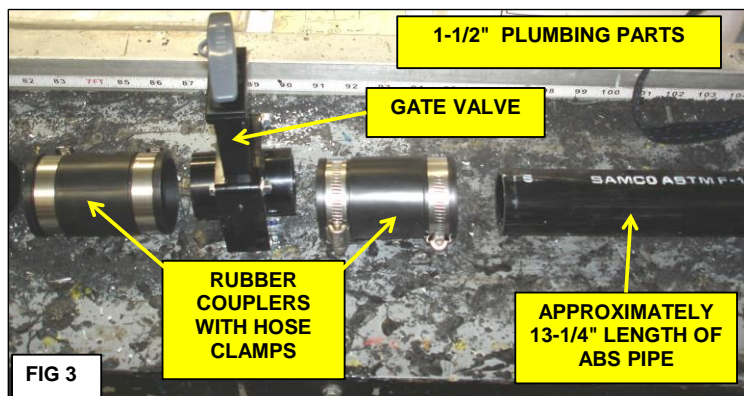
- Air saw
- Teflon Plumber Tape
- Screw gun
- 3/8" socket extension 8" in length
- 12" extension to reach gate valve clamps
- ABS pipe cement
- Tape measure
- Flashlight



PARTS IDENTIFICATION

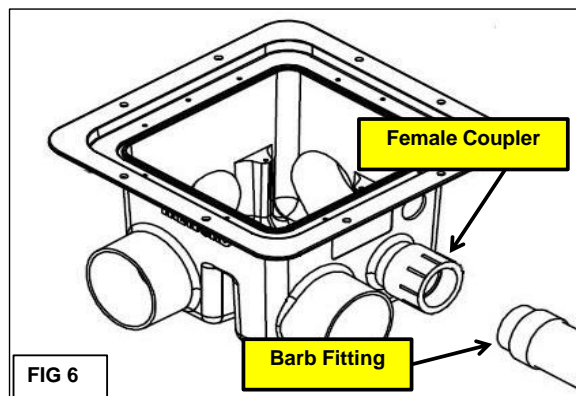
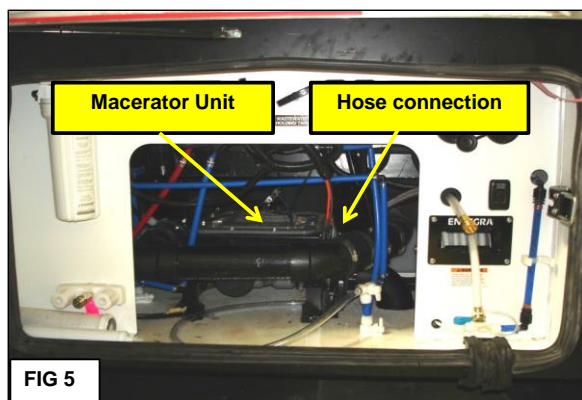


- 1 Fig 1: Shows a layout of how this macerator modification is going to look after assembly.
 Fig 2, 3 & 4: These are the individual plumbing parts required for this modification.
NOTE: The threaded female coupler shown in Fig 2 is already attached to the macerator output (See Fig 6).
 The macerator hose with the barb fitting screws into the threaded female coupler.

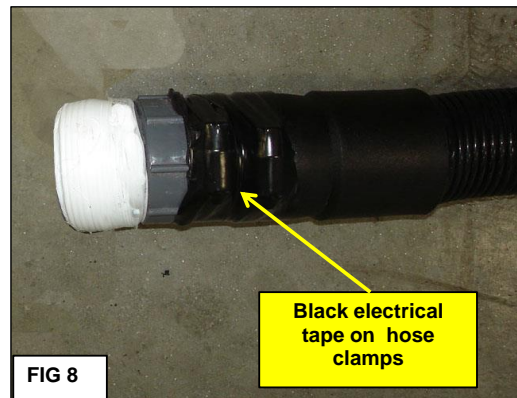
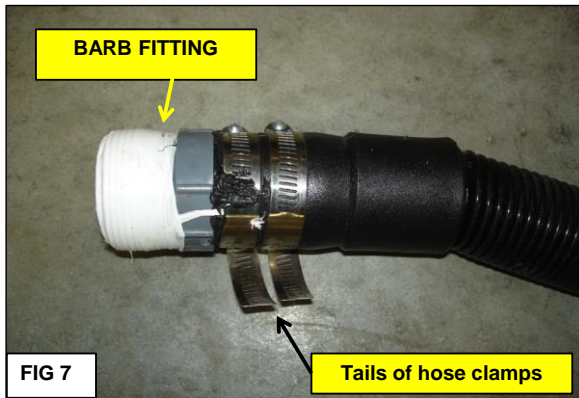


- 2 Fig 3: Shows more plumbing parts for the modification. All parts are 1-1/2" diameter.
 Fig 4: Shows the parts required for the hose assembly.
NOTE: The barb fitting and the threaded female coupler will already be attached to the macerator output.

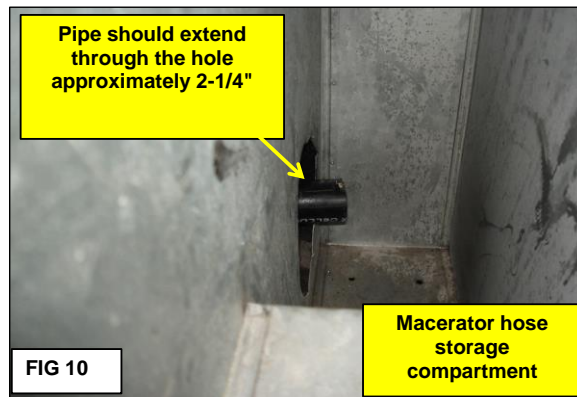
INSTRUCTIONS



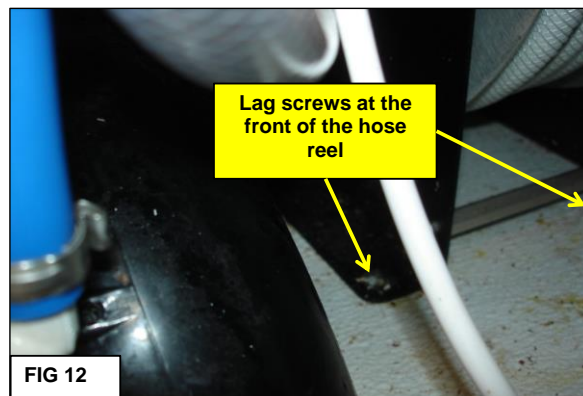
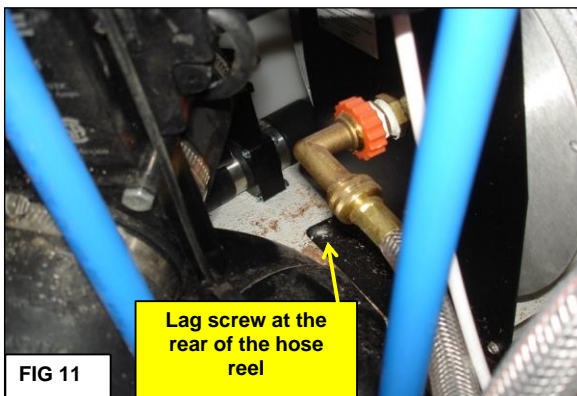
- 3 Turn the lights on for the utility center.
Fig 5: Locate the hose connection to the macerator unit. It will be on the right side of the macerator unit behind the front panel of the utility center. The macerator hose screws into a female coupler (Fig 6). Unscrew the hose & barb fitting from the female coupler. The female coupler stays on the macerator unit.



- 4 **Fig 7:** Shows the barb fitting attached to the macerator hose with two hose clamps.
Fig 8: If the tail(s) of the hose clamps look like **Fig 7**, they should be wrapped with electrical tape so they will not catch on hose. The barb fitting threads should be re-wrapped with new teflon plumbers tape.

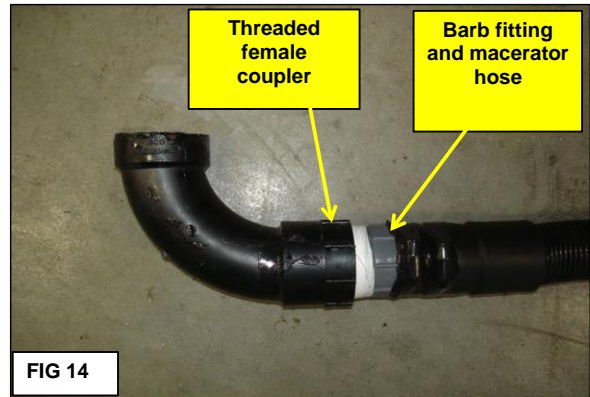
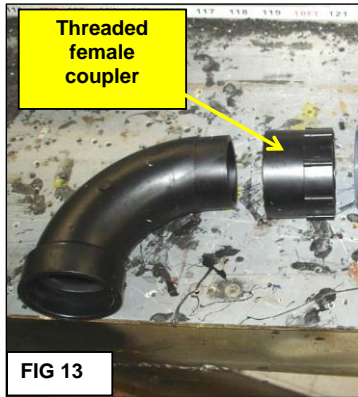


- 5 **Fig 9:** Dry fit the threaded male hub to the piece of 6-3/4" ABS pipe, then attach the gate valve with the two rubber couplers and the 13-1/4" piece of ABS pipe. The 13-1/4" pipe should extend through the hole that goes to the hose compartment next to the utility center. Lengths of pipe are approximate. Measurements should be taken prior to cutting pipe to make sure they will fit your specific installation.
Fig 10: This is the macerator hose storage compartment next to the utility center with the pipe sticking through the hole.
NOTE: You may run into a clearance issue with the gate valve and the hose reel. The hose reel may have to be moved slightly.

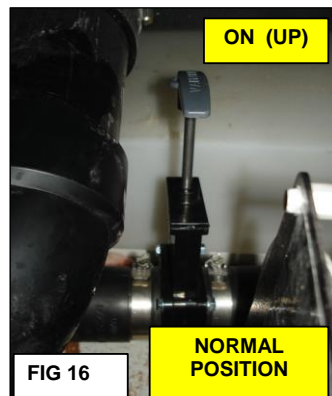
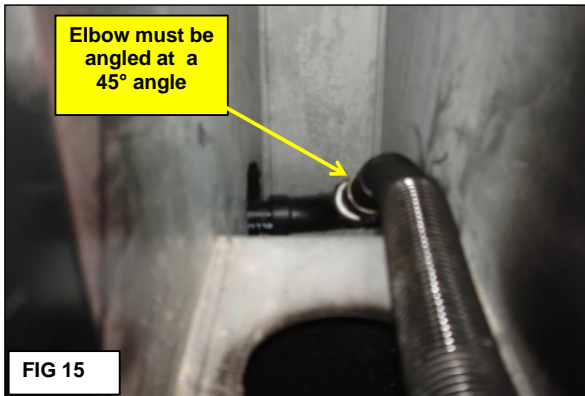


- 6 **Fig 11:** If the hose reel needs to be moved, there is one hex head lag bolt at the back of the reel shown here.
Fig 12: There are two hex head lag screws at the front of the hose reel which must also be removed. Use the screw gun with the 3/8" socket extension to remove these 3 screws. (the extra 12" extension may be necessary to remove the screw at the front right corner of the reel)
 Relocate the hose reel approximately 1/2" closer to the front of the utility center to gain clearance for the new pipe & gate valve assembly. Make sure the hose reel operates without binding up, then re-attach the hose reel using the same 3 hex head lag screws.
- 7 Now that there is clearance behind the hose reel for the gate valve, and the pipe lengths are correct to reach the hose compartment,

Pull the assembly out of the utility center. Glue the first section of pipe to the male hub with the ABS cement (Refer to **Fig 2**) Apply teflon plumbers tape to the threads of the male hub (several turns) and screw the hub and pipe to the female coupler which is still attached to the macerator unit. The assembly should look similar to **Fig 9** above. Next attach the gate valve with the rubber couplers to the two pipe sections. Tighten the hose clamps with the socket extension.



- 8 **Fig 13:** Glue the extra threaded female coupler to the end of the elbow using ABS cement.
Fig 14: Attach the macerator hose with barb fitting to the female coupler (which was glued to the elbow in **Fig 13**).



- 9 **Fig 15:** Test fit the elbow on the piece of pipe sticking through the hole. Make sure there is clearance for the macerator hose.
IMPORTANT: THE ELBOW MUST BE ANGLED AT 45° AS SHOWN.
 If the elbow fitting and hose have clearance in the compartment, use the ABS cement and glue the elbow to the pipe.
MAINTAIN THE 45° ANGLE ON THE ELBOW.
 Make sure the elbow is pushed all the way onto the piece of pipe.
Fig 16: The normal position for the gate valve is **ON** or the valve pulled **UP** as shown.
Fig 17: In the event of an emergency, the gate valve can be shut **OFF** by pushing the valve **DOWN**.
 This will stop all flow of waste through the macerator hose.