



SERVICE BULLETIN

Classification:	Reference:	Date:
AT13-014d	NTB13-079d	November 25, 2015

2007-2012 ALTIMA; REDUCED PERFORMANCE DUE TO CVT FLUID TEMPERATURE PROTECTION LOGIC

This bulletin has been amended to revise the flow chart on page 2 with additional repair information. Please discard all previous versions.

APPLIED VEHICLE: 2007-2012 Altima (L32)
APPLIED ENGINE: 4 Cylinder **only**

IF YOU CONFIRM

The vehicle speed is, or was, reduced by the CVT fail-safe (reduced vehicle speed) after continuous operation under the following conditions:

- High RPM and/or high speed driving (RPM of 4000+ or speeds of 65 mph (104.6 km/h) for 1.0 – 1.5 hrs or more)
- Driving in ambient temperature of 96 degrees or higher
- Climbing steep or extended hills for 6 miles (9.6 km) or more
- Whine or rattle type noise occurring during reduced engine performance (vehicle speed decrease)

ACTION

1. Perform a self diagnosis with CONSULT-III plus (C-III plus).
 - If DTCs are present, refer to the appropriate section of the Electronic Service Manual (ESM) and diagnose the DTCs first before proceeding to step 2 of **ACTION**.
2. Check the number of counts of "CVT-A" and "CVT-B" with C-III plus.
 - Refer to the Flow Chart on page 2 and the Service Procedure starting on page 3 to confirm if this bulletin applies.

IMPORTANT: The purpose of "ACTION" (above) is to give you a quick idea of the work you will be performing. You **MUST** closely follow the entire Service Procedure as it contains information that is essential to successfully completing the repair.

Nissan Bulletins are intended for use by qualified technicians, not 'do-it-yourselfers'. Qualified technicians are properly trained individuals who have the equipment, tools, safety instruction, and know-how to do a job properly and safely. NOTE: If you believe that a described condition may apply to a particular vehicle, DO NOT assume that it does. See your Nissan dealer to determine if this applies to your vehicle.

Flow Chart

Important

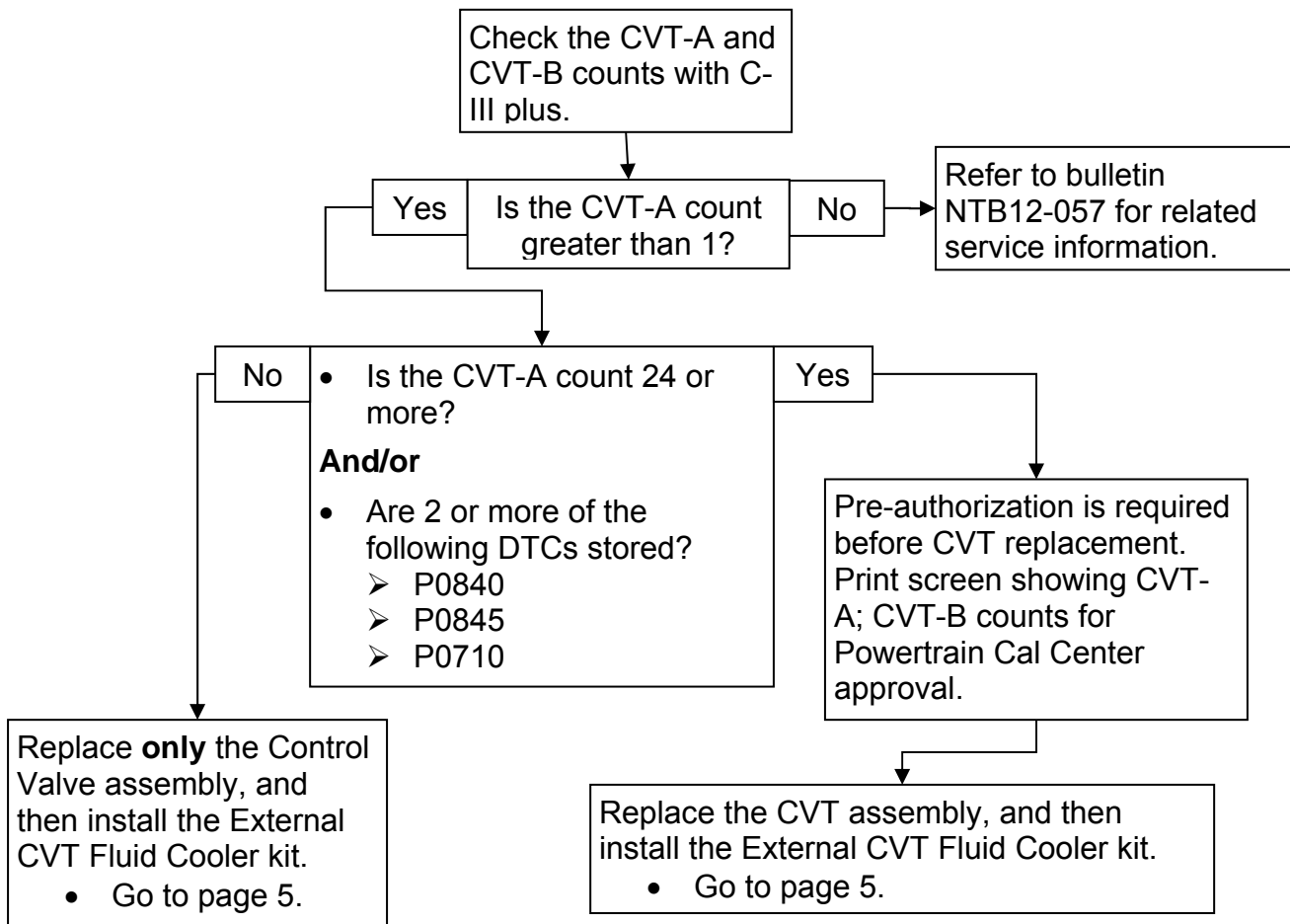
Before applying this bulletin:

- Confirm that the CVT fluid has not been overfilled, and that it contains the proper CVT fluid.
- Confirm that the coolant concentration is not greater than 50%.

Use of incorrect fluid, overfilling the CVT fluid, or coolant concentrations greater than 50% can cause the symptoms in the IF YOU CONFIRM section on page 1.

Refer to NTB12-057 to resolve these conditions first if they should occur.

NOTE: Refer to the ESM for the correct CVT fluid and coolant type for the model and year vehicle that is being worked on.



NOTE:

- If the CVT-A count is not greater than 1 and similar symptoms to those in IF YOU CONFIRM and/or a single DTC is present, refer to the ESM and NTB12-057 for further diagnosis.
- Refer to the ESM section TM – Transaxle & Transmission for removal and installation information for the Control Valve or CVT assemblies.

SERVICE PROCEDURE

Check CVT-A and CVT-B count with C-III plus

1. Open C-III plus and select **Diagnosis (All Systems)**.

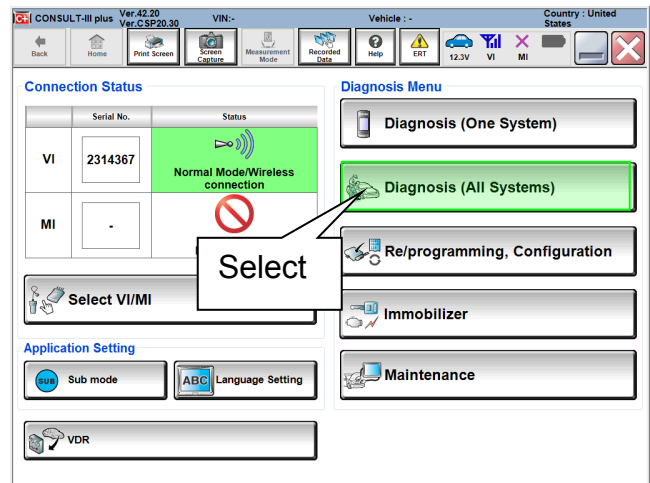


Figure 1

2. Select **TRANSMISSION**.

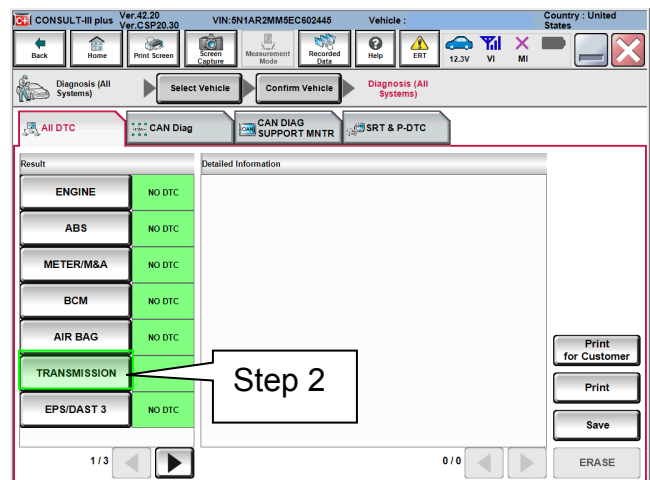


Figure 2

3. In **Data Monitor** select **TRANSMISSION** and then select **CVT-A** and **CVT-B**.

4. Select **START**.

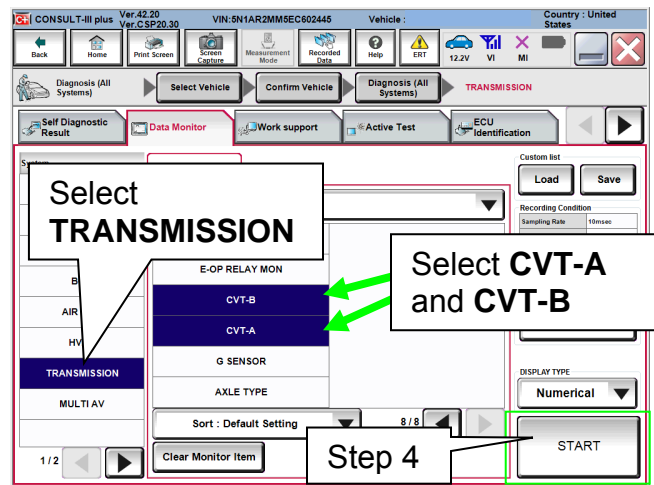


Figure 3

5. Check both **CVT-A** and **CVT-B** counts and refer to the Flow Chart on page 2 to confirm if this bulletin applies.

NOTE: If the CVT-A count is not greater than 1 and similar symptoms to those in IF YOU CONFIRM and/or a DTC is present, refer to the ESM and NTB12-057 for further diagnosis.

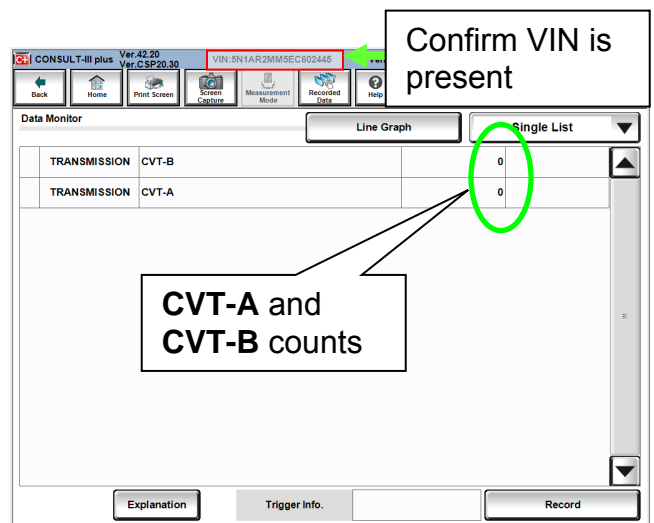


Figure 4

6. If it is confirmed that this bulletin applies, install the SERVICE KIT-COOLER-ASSY listed in the Parts Information.

And

- If the CVT count is 24 or greater, replace the CVT assembly.

Or

- If the CVT count is less than 24, replace the Control Valve Assembly.

IMPORTANT: Pre-authorization is required before CVT replacement. Print screen showing CVT-A; CVT-B counts for Powertrain Call Center approval.

- Refer to the **Installation Instructions** beginning on the next page to install the SERVICE KIT-COOLER-ASSY.
- Refer to the ESM section TM – Transaxle & Transmission for removal and installation information for the Control Valve or CVT assemblies.

INSTALLATION INSTRUCTIONS

Install External oil cooler kit

1. Place the vehicle on a lift and raise as needed to perform the following procedure.
2. Attach the COOLER ASSY-AUTO TRANS to the radiator support ahead of the radiator/condenser:
 - a. Insert 3 bolts (Figure 5 and Figure 6) from the kit through the composite radiator support from the engine compartment side.
 - These holes are pre-existing.
 - b. Install the COOLER ASSY-AUTO TRANS onto bolts.
 - c. Thread on the nuts and torque to 9.8 N·m (1.0 kg-m, 87 in-lb).

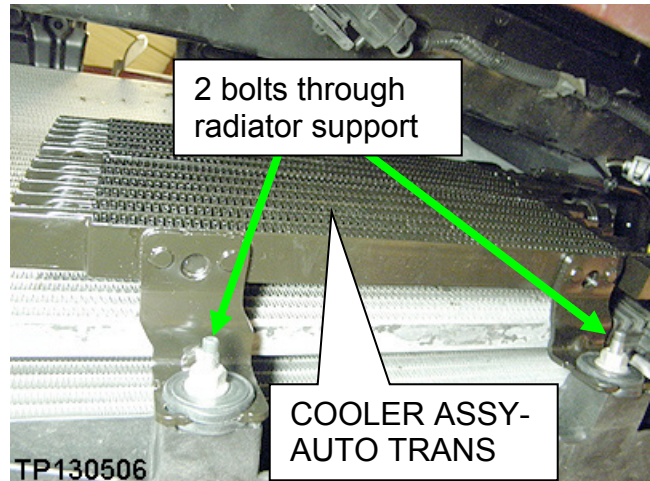


Figure 5

NOTE: Figure 5 is a view of the front of the radiator/condenser, taken from the bottom looking up.

3. Route both hoses through the radiator support shown in Figure 6.
4. Slide 1 “CLP - HOSE SPR PLATE” (spring clamp) onto each hose.
5. Attach both of the hoses to the COOLER ASSY-AUTO TRANS.
 - See Figure 8 and Figure 9 on page 6 for correct hose routing.
 - Do not release the CLP - HOSE SPR PLATE(s) yet, until the hoses are attached at their other ends.

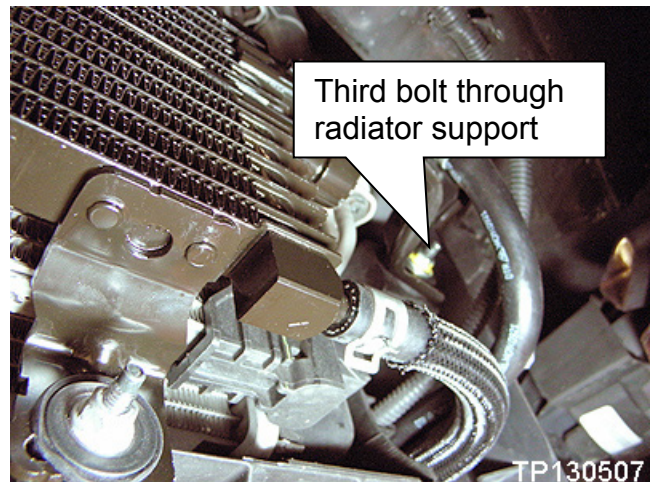


Figure 6

6. Remove the upper radiator to CVT fluid hose from both the radiator and the CVT and discard this hose and its CLP - HOSE SPR PLATE(s).
7. Clean both radiator and CVT fittings with brake cleaner.

NOTE: Use genuine Nissan Brake Cleaner or equivalent.

8. Attach the new hose from the COOLER ASSY-AUTO TRANS to the upper radiator CVT fluid fitting.

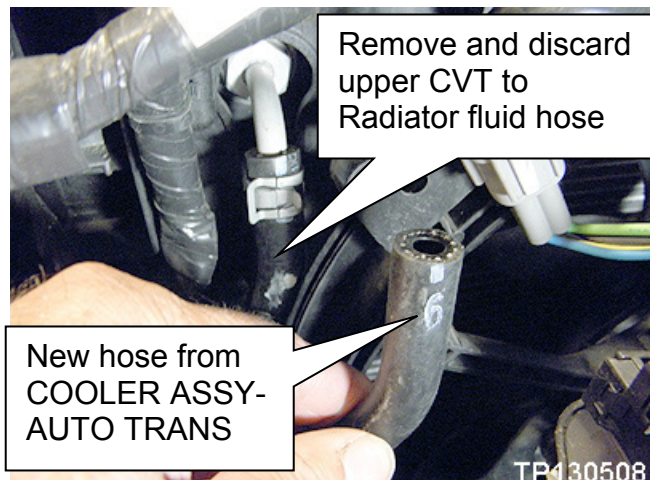


Figure 7

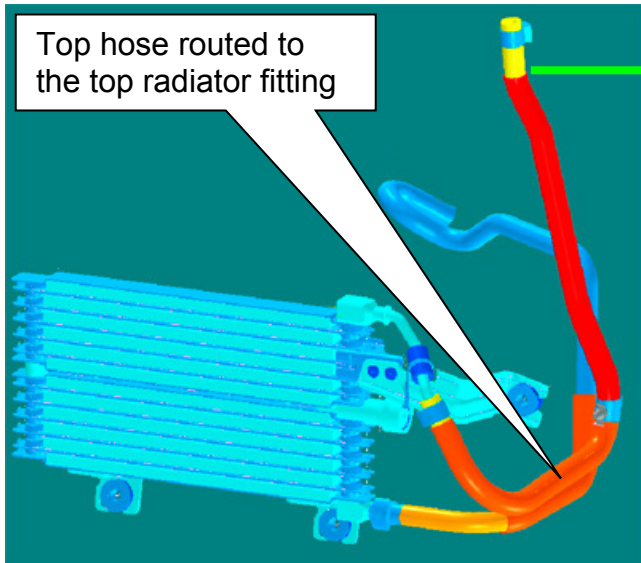


Figure 8

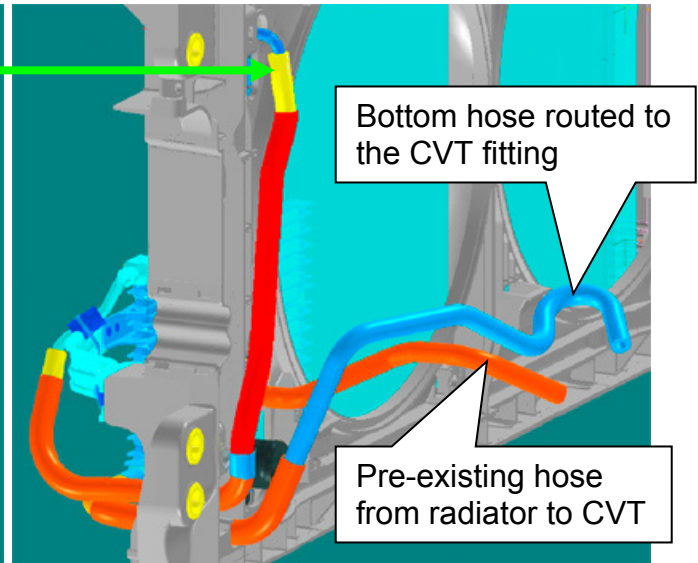


Figure 9

Figure 8 and Figure 9 show hose routing from the COOLER ASSY-AUTO TRANS (external CVT cooler) to the radiator and the CVT.

9. Attach the second COOLER ASSY-AUTO TRANS fluid hose to the CVT (Figure 10).
10. Position and release all 4 of the CLP - HOSE SPR PLATE(s) (spring clamps).
 - Position the CLP - HOSE SPR PLATE as close to each fitting bulge as possible and then release them.

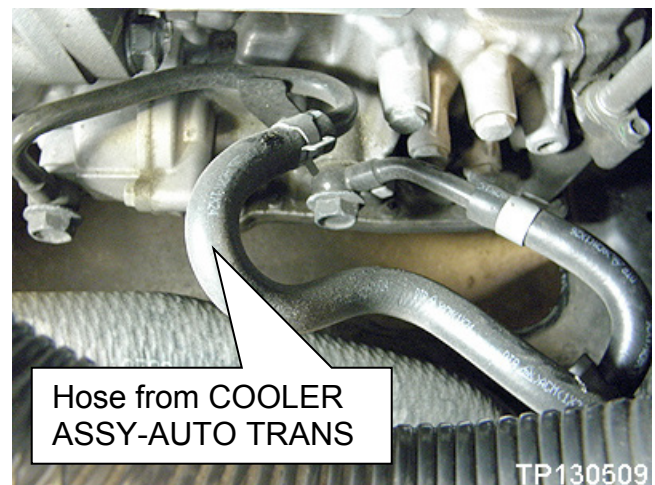


Figure 10

NOTE: Confirm that the CLP - HOSE SPR PLATE(s) are not on top of the fitting bulge or on an angle.

11. Check the level of the CVT Fluid and add as needed.

NOTE: For warranty repairs, Nissan NS-2 CVT Fluid **must** be used. For customer pay repairs, Nissan NS-2 CVT Fluid or an equivalent is recommended.

PARTS INFORMATION

DESCRIPTION	PART #	QUANTITY
SERVICE KIT-COOLER ASSY	21606-ZX59A	1
NS-2 CVT Fluid (2)	999MP-NS200P (1)	As needed
Control Valve Assembly	(3)	1
CVT Assembly	(3)	1

- (1) For warranty repairs, Nissan NS-2 CVT Fluid **must** be used. For customer pay repairs, Nissan NS-2 CVT Fluid or an equivalent is recommended.
- (2) Order this item through the Nissan Maintenance Advantage program: Phone: 877-NIS-NMA1 (877-647-6621). Website order via link on dealer portal www.NNAnet.com and click on the "Maintenance Advantage" link.
- (3) Use the VIN and the electronic parts catalog (FAST or equivalent) to obtain the applicable part number for the vehicle you are working on.

Table A

PART NAME	QTY PER KIT
COOLER ASSY-AUTO TRANS	1
HOSE-AUTO TRANS, UPR	1
HOSE-AUTO TRANS, LWR	1
CLP - HOSE SPR PLATE	4
BOLT-HEX	3
NUT-HEX	3

CLAIMS INFORMATION

Submit a Primary Part (PP) type line claim using the following claims coding:

DESCRIPTION	PFP	OP CODE	SYM	DIA	FRT
Replace Control Valve Assembly	21606-ZX59A	JD48AA	AE	32	(1)
Oil cooler kit installation		JX15AA			0.8

- (1) Reference the current Nissan Warranty Flat Rate Manual and use the indicated Flat Rate Time.

OR

Submit a Primary Part (PP) type line claim using the following claims coding:

DESCRIPTION	PFP	OP CODE	SYM	DIA	FRT
R&I Automatic CVT Transaxle Assembly	(2)	JD01AA	ZE	32	(1)
Replace Automatic CVT Transaxle Assembly		JD023A			
CVT TROUBLE DIAGNOSIS		JX22AA			
Oil cooler kit installation		JX15AA			0.8

- (1) Reference the current Nissan Warranty Flat Rate Manual and use the indicated Flat Rate Time.
- (2) Refer to the electronic parts catalog (FAST) and use the CVT assembly part number as the Primary Failed Part (PFP).