

Special Bulletin

SP15-336C

Date	Expiration	Release	Page
06.2015	06.2017	8	1(6)

Revision C: This document supersedes previous revisions.
 Added specific torque value at step 9 (part 1) and step 5 (part 2) for bolts fastened to the floor (plywood).

FIVE FOOT SWITCHES REPLACEMENT

Prevost vehicles

DESCRIPTION

On the vehicles affected by this bulletin, five foot switches might be working intermittently and needs to be replaced.

MODEL YEAR(S) AND VEHICLES INVOLVED

NOTICE TO SERVICE CENTERS	
Verify vehicle eligibility by checking warranty bulletin status with SAP or via ONLINE WARRANTY SYSTEM available on Service / Warranty tab of Prevost website.	
Model	VIN
X3-45 Commuter Model Year : 2014 - 2015	2PCG33495EC73 5590 , 2PCG33498EC73 5602 and from 4RKG33497F973 7001 (fleet number 2492) up to 4RKG33491F973 7091 (fleet number 2582)
This bulletin does not necessarily apply to all the above-mentioned vehicles, some vehicles may have been modified before delivery. The owners of the vehicles affected by this bulletin will be advised by a letter indicating the Vehicle Identification Number (VIN) of each vehicle concerned.	

MATERIAL NEEDED

Order kit # **SP15-336** which includes the following parts:

Part No.	Description	Qty
565913	FOOT SWITCH	5

NOTE

Validate that the new foot switch date code (yymmdd) on label is 150618 or more recent.



PROCEDURE

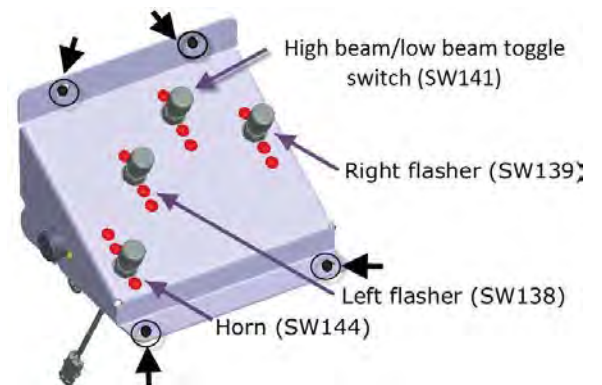


DANGER

Park vehicle safely, apply parking brake, stop engine. In the battery box, set the battery cut-off switch to the OFF position prior to working on the vehicle.

PART 1 - FOOT SWITCH PEDESTAL BASE

- 1) To gain access to the foot switches, unscrew four 5/16 cap screws identified on the image and carefully remove the switch pedestal base.



- 2) Unscrew a first switch mounting screws (3 screws).
Note: DO NOT DISCARD the foot switches. They must be returned to the manufacturer.



Date	Expiration	Release	Page
06.2015	06.2017	8	3(6)

- 3) While proceeding with one switch at a time, disconnect the appropriate switch connector. Switches are removed from underneath the pedestal. If needed, identify the harnesses for proper connection.

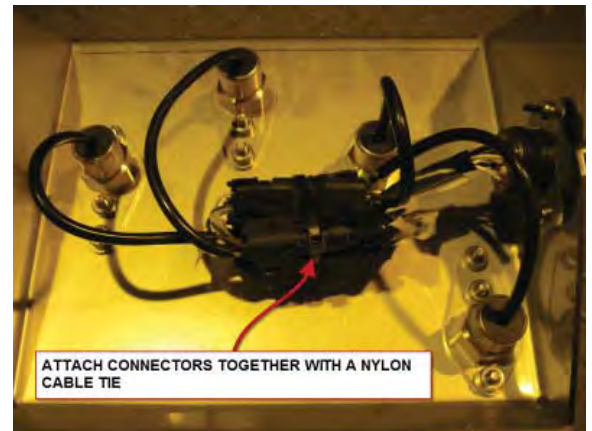
Note: DO NOT DISCARD the foot switches. They must be returned to the manufacturer.



- 4) Install the first new switch (p/n 565913) from underneath the pedestal base.



- 5) Tighten the switch mounting screws to pedestal (*torque: 60 lbs-in*).
- 6) Plug the new switch to the proper harness.
- 7) Proceed similarly with the second switch and so on.



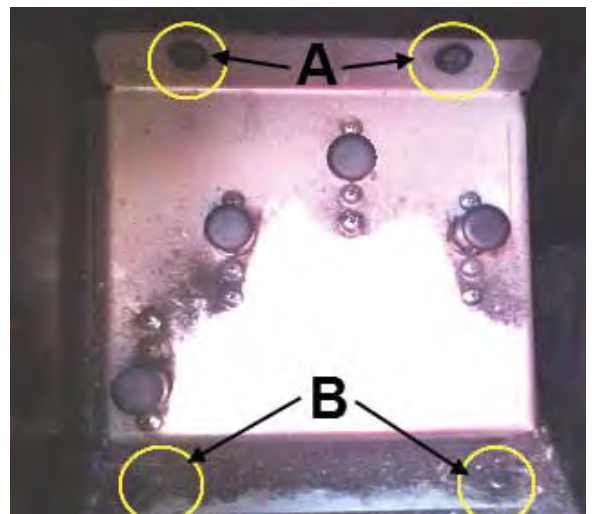
- 8) In order to test proper functioning and connections of the new switches, press all four foot switches one after the other and assure that the corresponding system activates.

HORN: can be heard
LEFT TURN SIGNAL: flashes
RIGHT TURN SIGNAL: flashes
HIGH BEAM: high beam and low beam toggle

- 9) Finally, reinstall the switch pedestal in original position.

Bolts A: standard torque: 18 lbs-ft
Bolts B: specific torque: 7 lbs-ft

Apply torque seal on bolts B

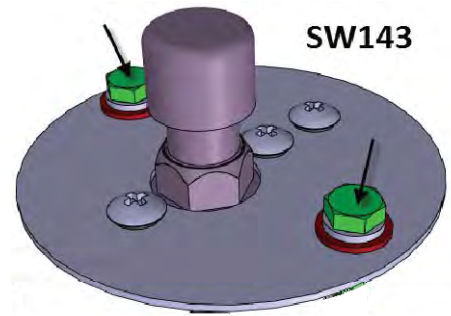


Date	Expiration	Release	Page
06.2015	06.2017	8	5(6)

PART 2 - DISTRESS SIGNAL FOOT SWITCH (SW143)

- 1) Unscrew the two bolts identified with arrows and then remove the foot switch circular mounting plate.
- 2) Unscrew the foot switch mounting screws (3 screws).

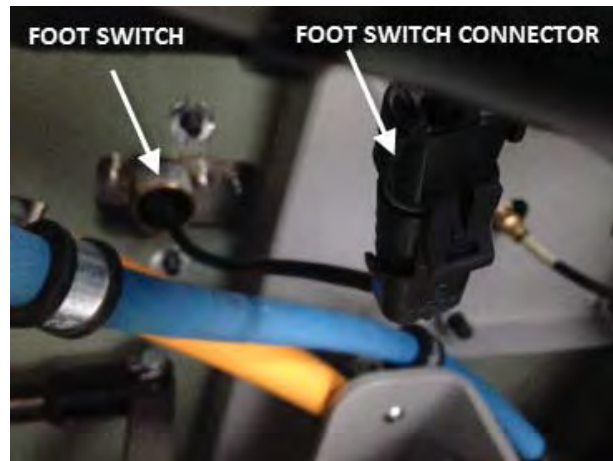
Note: DO NOT DISCARD the foot switches. They must be returned to the manufacturer.



- 3) From the front electrical compartment, unplug the foot switch connector.
- 4) Install the new foot switch (p/n 565913) to the circular mounting plate. Tighten the switch mounting screws to mounting plate (*torque: 60 lbs-in*).

Note: Check the switch proper functioning. With the foot switch not connected, a continuity check should be performed by probing the connector pins with a multimeter.

- 5) Reinstall the circular mounting place (**torque: 7 lbs-ft**). Apply torque seal.
- 6) Underneath the floor, plug the new switch connector.



Date	Expiration	Release	Page
06.2015	06.2017	8	6(6)

PARTS / WASTE DISPOSAL

Return replaced parts to Prevost.

ESTIMATED TIME

The time required to perform this special bulletin is approximately 1½ hour.

OTHER

VBC Bulletin	Not applicable
Fail Code	06.05
Defect Code	09
System Condition	B
Causal Part	565913

Prevost engages in a continuous program of testing and evaluating to provide the best possible product. Prevost, however, is not committed to, or liable for updating existing products.