

**August 21, 2015**

02207 Version 1

## Product Update: Electronic Power Steering (EPS) Software Update

### AFFECTED VEHICLES

Year	Model	Trim	VIN Range
2013	Accord	ALL	Check the iN VIN status for eligibility
2014	Accord Plug-In	ALL	Check the iN VIN status for eligibility

### BACKGROUND

When a failure is detected, the EPS control unit goes into back-up mode. The new software provides partial assist during back-up mode.

### CUSTOMER NOTIFICATION

Owners of affected vehicles will be sent a notification of this campaign.

Do an iN VIN status inquiry to make sure the vehicle is shown as eligible.

Some vehicles affected by this campaign may be in your new or used inventory. Repair these vehicles before they are sold.

### CORRECTIVE ACTION

Use the HDS and the Mongoose Pro Honda Interface Tool to update the EPS software.

### TOOL INFORMATION

Tool Name	Tool Number	Quantity
Mongoose Pro Honda Interface Tool	MGP Honda	1

**NOTE: This tool was automatically shipped to your dealership on June 12, 2015.**

### SOFTWARE INFORMATION

NOTE: Unnecessary or incorrect repairs resulting from a failure to update the HDS are not covered under warranty.

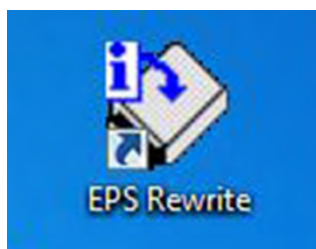
HDS Software Version:

**3.016.042 or later.**

**J2534 EPS Update: 5.01**

**J2534 Mongoose Drivers: 1.2.0.000**

**NOTE: If the EPS Rewrite icon is present on your laptop, your software is updated.**



**CUSTOMER INFORMATION:** The information in this bulletin is intended for use only by skilled technicians who have the proper tools, equipment, and training to correctly and safely maintain your vehicle. These procedures should not be attempted by "do-it-yourselfers," and you should not assume this bulletin applies to your vehicle, or that your vehicle has the condition described. To determine whether this information applies, contact an authorized Honda automobile dealer.

Year/Model	Program ID	Program Part number	CM Part Number
2013 Accord 4-Door LX L4	39990-T2F-A020	39990-T2F-3050	39980-T2F-A014
2013 Accord Sport	39990-T2F-A810	39990-T2F-3070	39980-T2F-A814
2013 Accord 4-Door EX, EX-L, L4	39990-T2F-A920	39990-T2F-3060	39980-T2F-A914
2013 Accord 4-Door EX, EX-L, Touring, V6	39990-T2G-A910	39990-T2G-3050	39980-T2G-A914
2013 Accord 2-Door EX-L, L4	39990-T3L-A010	39990-T3L-3050	39980-T3L-A014
2013 Accord 2-Door EX-L, V6	39990-T3M-A910	39990-T3M-3050	39980-T3M-A914
2014 Accord Plug-In	39990-T3V-A030	39990-T3V-3050	39980-T3V-A013

## WARRANTY CLAIM INFORMATION

The normal warranty applies.

Operation Number	Description	Flat Rate Time	Template ID	Failed Part Number
5135A7	Update the EPS control unit software.	0.3 hr	15-055A	39980-T2F-A91

Defect Code: 5ZS00

Symptom Code: JT500

Skill Level: Repair Technician

## BEFORE GETTING STARTED

### NOTE:

- If unfamiliar with the Mongoose Pro Honda Interface tool or the Electronic Power Steering Rewrite Application, refer to the following Special Tools guides:
  - Mongoose Pro Honda User Guide (ST 01937)
  - Mongoose Pro Honda Quick Start Guide (ST 01934)
  - Accord EPS Rewrite Reference Guide (ST 01936)
- Connect a fully charged jumper battery to the vehicle and leave it connected during the entire procedure to maintain steady voltage.
- Never turn the ignition to OFF or ACCESSORY. If there is a problem with the update, leave the ignition turned to ON.
- To prevent EPS control unit damage, do not operate anything electrical (headlights, audio system, brakes, A/C, power windows, door locks, etc.) during the update.

## DIAGNOSIS

Connect the HDS and check for DTCs in the EPS system.

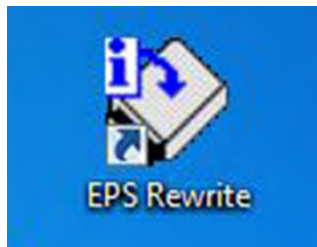
- If DTC 53-01 torque sensor (low/high check) or DTC 53-02 torque sensor (average check) is stored, complete this bulletin and refer to SB 15-056, *Warranty Extension: EPS Torque Sensor (DTC 53-01 or DTC 53-02)* to replace the steering gear box.
- If DTC 53-01 or DTC 53-02 is not stored, go to REPAIR PROCEDURE.

## REPAIR PROCEDURE

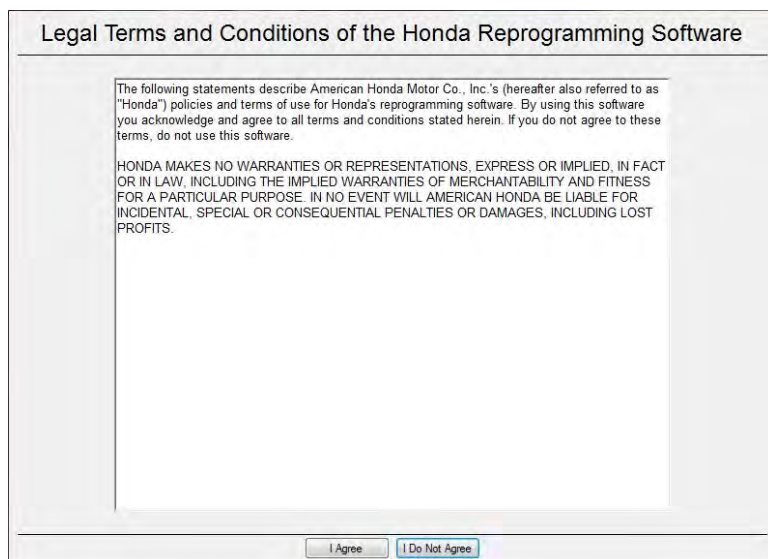
### Updating the EPS with the Mongoose Pro Honda Interface Tool.

#### NOTE:

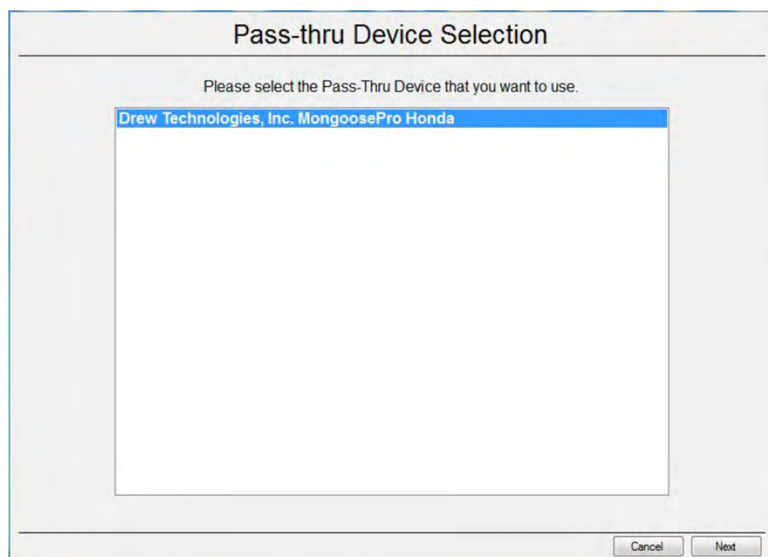
- Make sure you have the latest software loaded to your PC.
  - During the software update, **DO NOT turn off the ignition to OFF. Doing so during the update will damage the control unit.**
1. Connect a jumper battery to the vehicle and leave it connected during the entire procedure to maintain a steady voltage.
  2. Connect the Mongoose Pro Honda cable between the PC and the vehicle's DLC.
  3. Select the **EPS Rewrite** Icon on your PC.



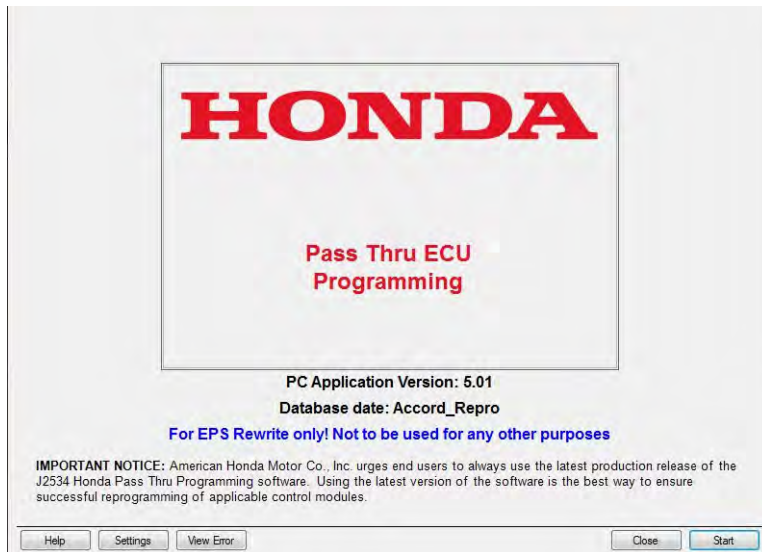
4. Click on the **I Agree** button.



5. Click the **Next** button in the **Pass-thru Device Selection** screen.

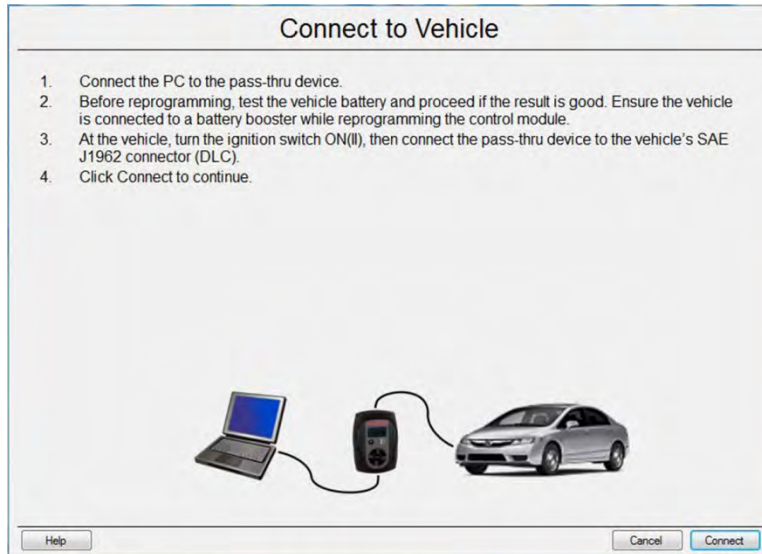


6. Click on the **Start** button.



7. Click on the **Connect** button.

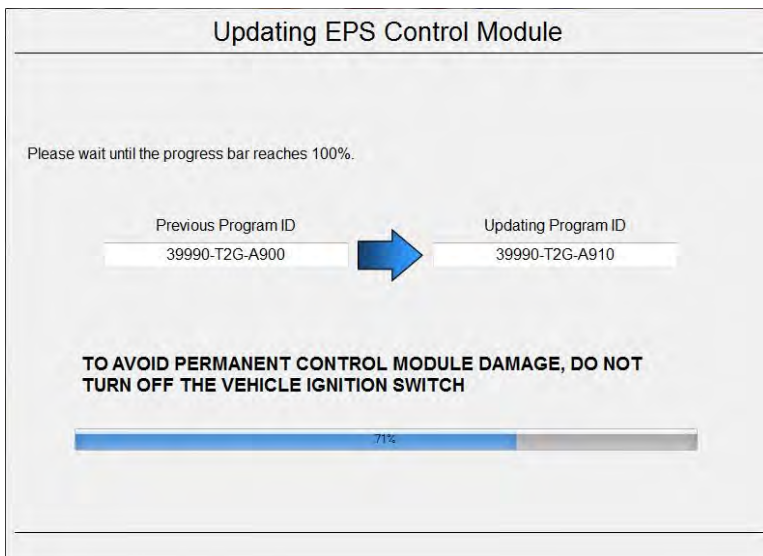
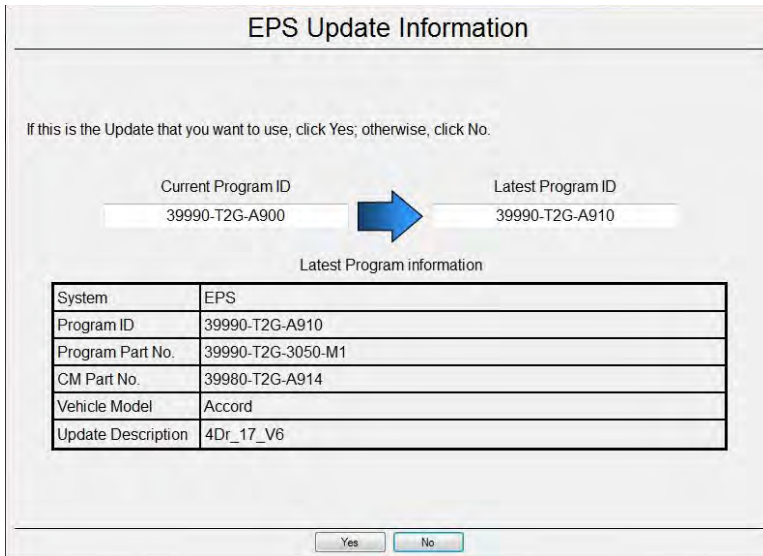
**NOTE: Although the MVCI is shown in the screen captures, the Mongoose Pro Honda Interface Tool is actually used.**



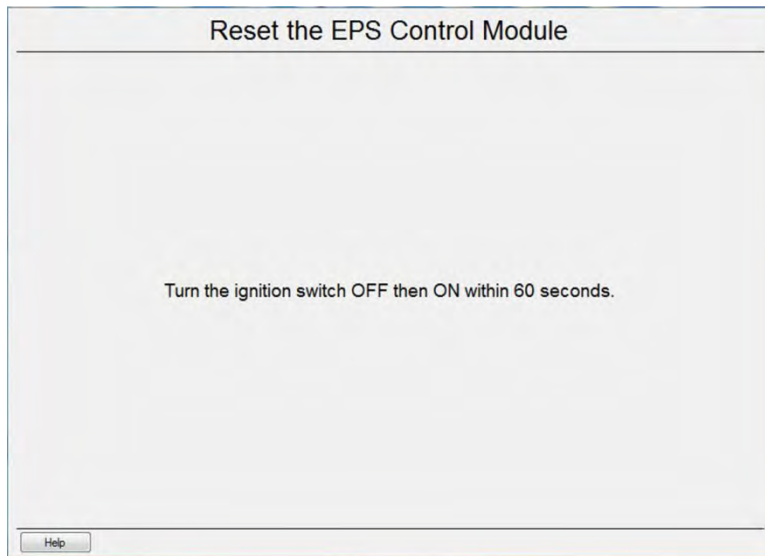
8. You will see the **Communication with the Vehicle** screen.



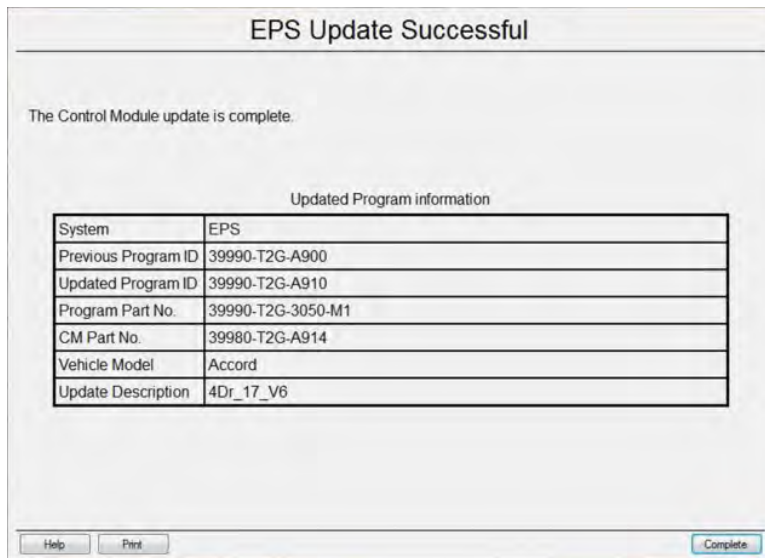
9. Wait for the **EPS Update Information** screen to appear. Select **Yes**. The update will start and the screen will show a loading bar.



10. Turn the ignition to OFF, then to ON within 60 seconds to complete the updating procedure.



11. The **EPS Update Successful** screen appears. Select **Complete**, then disconnect the Mongoose Pro Honda Interface Tool.



END