



SUBJECT: Fuel sender and fuel tank deformity

CONDITION: Fuel gauge may show less fuel than is in tank

APPLIES TO: This bulletin applies to MM, K3, K2, and NVS model motor home chassis manufactured between April 24, 2002 and April 6, 2015.

CORRECTION: Adjust fuel sender float arm

LABOR ALLOCATION: 3 hrs.

PARTS NEEDED:

<u>QTY</u>	<u>Part Number</u>	<u>Description</u>
1	S-2480-001	Kit-Service, Fuel Sender Calibration

Kit # S-2480-001 Contains:

<u>QTY</u>	<u>Part Number</u>	<u>Description</u>
1	0445-HH1	Gasket-Fuel Level Sensor
4	04280050H8Y	1/4-28X1/2 Hex HD Yellow GRD 8
4	04LWZ	Washer-1/4 Lock, Zinc
1	TSB15-310-002	Instruction Document

GENERAL INSTRUCTIONS:

Please thoroughly review entire work procedure before starting work. If there are questions and/or concerns with steps defined in this procedure, contact Spartan Motors USA, Inc. Customer & Product Support Group.

All applicable industry safety standards must be followed when performing work identified in this procedure.

Service Bulletins are intended for use by Professional Technicians only. They are written to guide Professional Technicians in performing service to vehicles of product specific nature in conjunction with industry standards. Professional Technicians are appropriately trained on industry standards and have the tools and equipment to perform procedures safely and properly.



STEP-BY-STEP INSTRUCTIONS:

1. Confirm fuel tank and sender part numbers match BOM.
2. Fuel tank drain plug should be removed to ensure tank is empty. Reseal plug and reinstall.
3. Add fuel using calibrated dispenser to reach required capacity.
 - a. 0731-HH1-018 – 39 gallons – 1/4 tank
 - b. 0735-HH1-001 – 29 gallons – 3/16 tank
 - c. 0822-HH1-001 – 39 gallons – 1/4 tank
 - d. 0969-HH1-001 – 46 gallons – 3/16 tank
4. Using calibrated Ohm meter take reading of fuel sender.
5. Record Ohm reading.
6. Fuel sender Ohm readings should read as follows:
 - a. 0731-HH1-018/0464-GG3-004 ~ 153 Ohms
 - b. 0735-HH1-001/0464-GG3-013 ~ 172 Ohms
 - c. 0822-HH1-001/0464-GG3-004 ~ 153 Ohms
 - d. 0969-HH1-001/0464-GG3-008 ~ 172 Ohms
7. If Ohm readings are within ± 10 Ohms of required readings process is complete, if readings are not within ± 10 Ohms proceed to step #8.
8. Remove fuel sender from tank.
9. Bend float arm at bend location – float arm will be adjusted according to Ohm measurement from initial reading. If Ohm reading is higher than the required reading the arm needs to be bent down, if the reading was less than the required reading the arm needs to be bent upwards.
 - a. Sender is labeled TOP as would be installed into tank. Refer to FIG. 3-1.

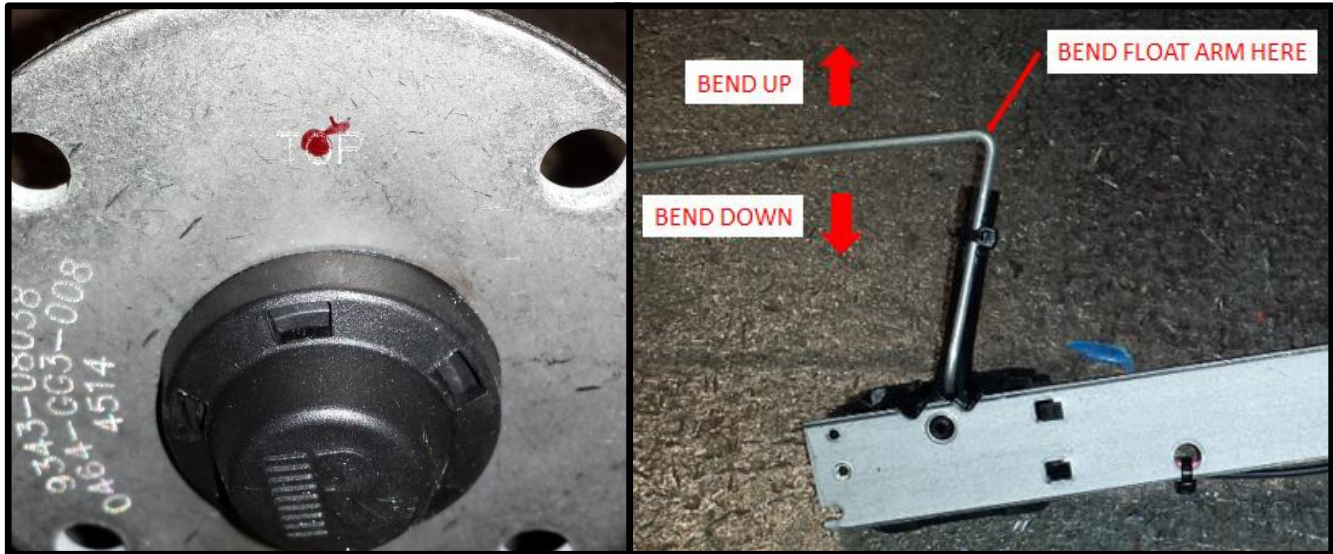


FIG. 3-1

10. Reinstall fuel sender, new fuel sender gasket and hardware. **Do not over tighten!**
11. Take new Ohm reading and record.
12. If Ohm reading does not match reading repeat starting at step #8. If Ohm reading matches proceed to step #13.
13. Torque sender mounting flange bolts to 108 lbs.-in. ± 12 .

Service Bulletins are intended for use by Professional Technicians only. They are written to guide Professional Technicians in performing service to vehicles of product specific nature in conjunction with industry standards. Professional Technicians are appropriately trained on industry standards and have the tools and equipment to perform procedures safely and properly.