



SB-10058823-5431

SERVICE BULLETIN

Classification:

AT15-017

Reference:

NTB15-082

Date:

October 1, 2015

2012-2014 VERSA SEDAN; HESITATION ON ACCELERATION AND/OR DTC P0705

APPLIED VEHICLE: 2012-2014 Versa Sedan (N17)

IF YOU CONFIRM:

An **APPLIED VEHICLE** has one or both of the following:

- Hesitation during acceleration
- MIL ON with DTC P0705 (Transmission Range Sensor A Circuit (PRNDL Input)) stored

ACTION:

1. Inspect both rear tail lamp assemblies for water intrusion (see page 2 for sample pictures).
2. If water intrusion is detected, inspect the circuit board of the tail lamp bulb holder(s) for corrosion (see page 2 for sample pictures).
3. If corrosion is found, replace the incident tail lamp assembly(ies).
 - Refer to the Electronic Service Manual (ESM), section **EXL-Exterior Lighting System**, for tail lamp replacement.
 - See **PARTS INFORMATION** on page 3.

NOTE:

- Replace only the tail lamp assembly where water intrusion has been detected.
- **Do NOT replace the CVT assembly for this incident, if it should occur.**

Nissan Bulletins are intended for use by qualified technicians, not 'do-it-yourselfers'. Qualified technicians are properly trained individuals who have the equipment, tools, safety instruction, and know-how to do a job properly and safely.
NOTE: If you believe that a described condition may apply to a particular vehicle, DO NOT assume that it does. See your Nissan dealer to determine if this applies to your vehicle.

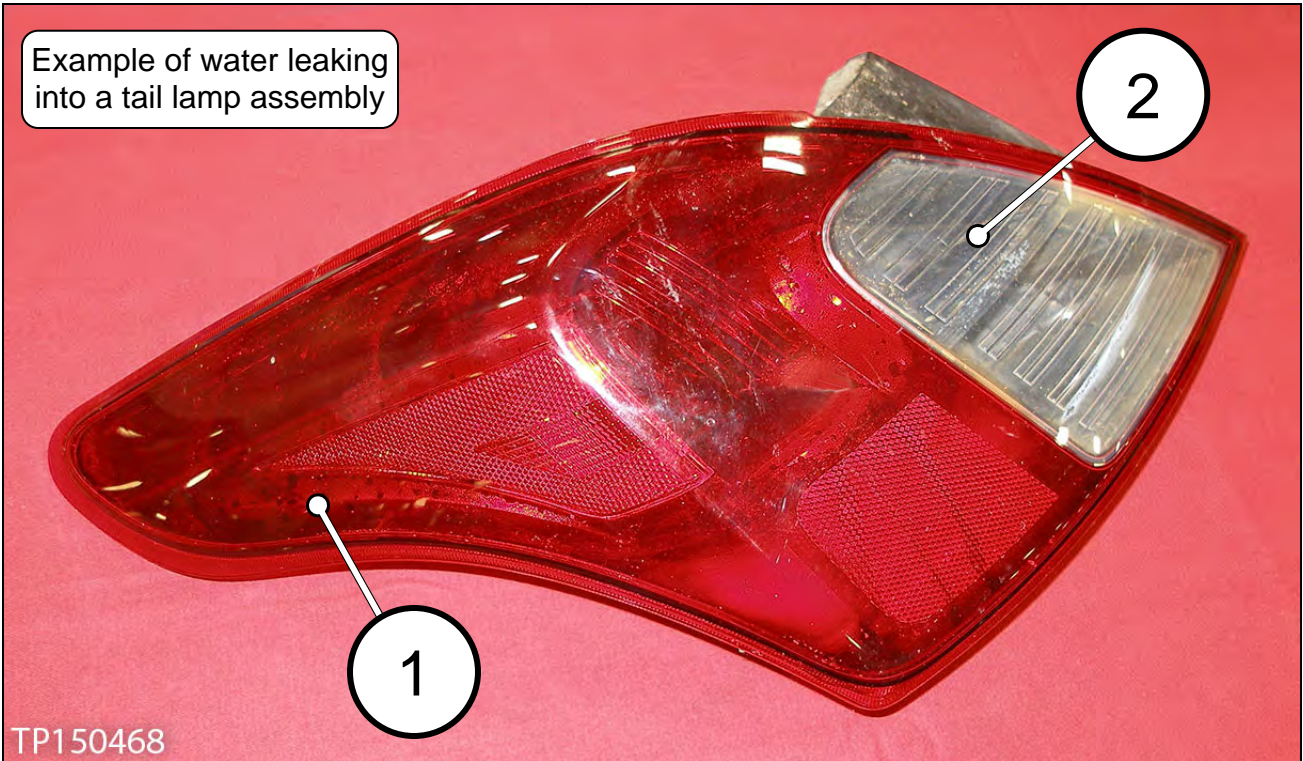


Figure 1

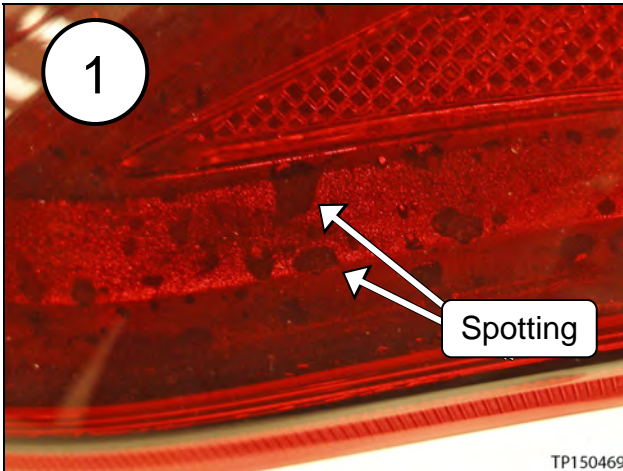


Figure 2

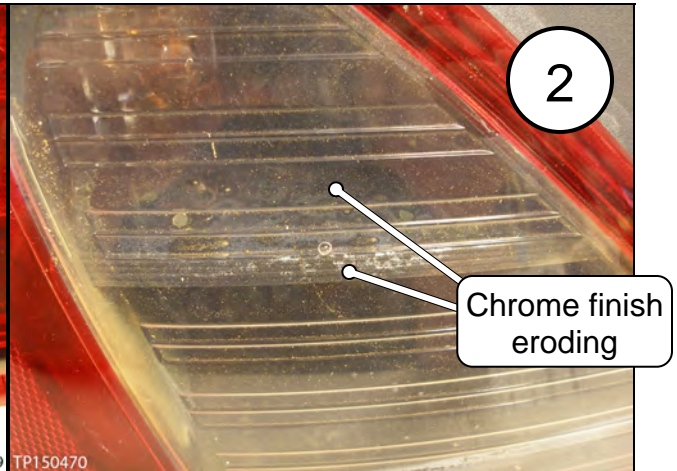


Figure 3

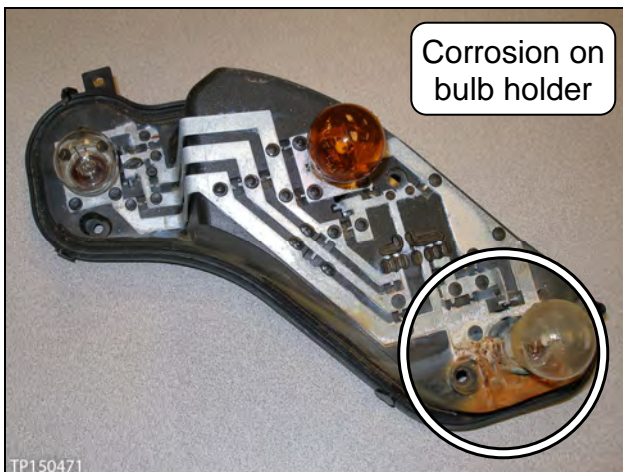


Figure 4

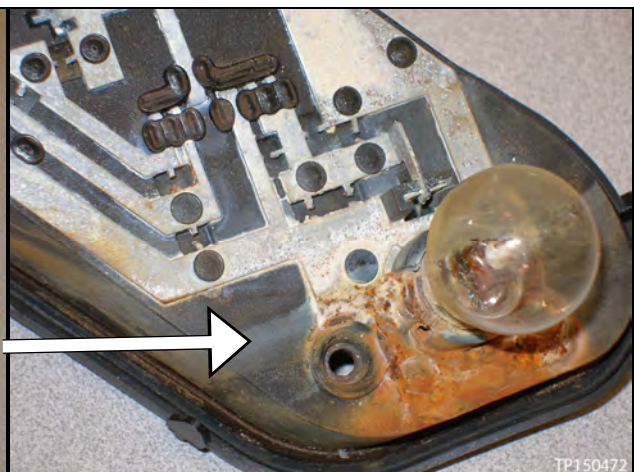


Figure 5

PARTS INFORMATION

| DESCRIPTION | PART NUMBER | QUANTITY |
|---------------------------|-------------|----------|
| LAMP ASSY-COMBINATION, LH | 26555-3AN0A | 1 |
| LAMP ASSY-COMBINATION, RH | 26550-3AN0A | 1 |

CLAIMS INFORMATION

Submit a Primary Part (PP) type line claim using the following claims coding:

| DESCRIPTION | PFP | OP CODE | SYM | DIA | FRT |
|---------------|-----|---------|-----|-----|-----|
| RPL Tail Lamp | (1) | RE24AA | ZE | 32 | (2) |

- (1) Reference the Parts Information table and use the indicated Part number as the PFP.
(2) Reference the current Nissan Warranty Flat Rate Manual and use the indicated FRT.

OR

Submit a Primary Part (PP) type line claim using the following claims coding:

| DESCRIPTION | PFP | OP CODE | SYM | DIA | FRT |
|---------------------|-----|---------|-----|-----|-----|
| RPL both Tail Lamps | (1) | RE26AA | ZE | 32 | (2) |

- (1) Reference the Parts Information table and use the indicated Part number as the PFP.
(2) Reference the current Nissan Warranty Flat Rate Manual and use the indicated FRT.