

# Service Campaign Bulletin



Mercedes-Benz

## **SB-10058526-5771**

Campaign No. 2015060006, June 2015

TO: ALL MERCEDES-BENZ CENTERS

SUBJECT: **Model 212, 218 (E, CLS), Model Year 2015  
Check/Remove Heat Shield**

Daimler AG (DAG), the manufacturer of Mercedes-Benz vehicles, has determined that a heat shield may have been installed by mistake on the left side of the engine. This may lead to a clearance condition. To correct this condition an authorized Mercedes-Benz dealer will check/remove the heat shield at the next dealer visit.

Prior to performing this Service Campaign:

- Please check VMI to determine if the vehicle is involved in the Campaign and if it has been previously repaired.
- Please review the entire Service Campaign bulletin and follow the repair procedure exactly as described.

Approximately 5 vehicles are affected.

Order No. P-SC-2015060006

This bulletin has been created and maintained in accordance with MBUSA-SLP S423QH001, Document and Data Control, and MBUSA-SLP S424HH001, Control of Quality Records.

# Service Campaign Bulletin

Service Campaign Bulletin

Service Campaign Bulletin

Service Campaign Bulletin

Service Campaign Bulletin

## Procedure

1. Lift vehicle with vehicle lift.
2. Check if heat shield (A, Figure 1) is installed on left side of engine.

**i** **Note:**

Heat shield (A) on left side of engine is **not** required for this variant.

- If heat shield (A) is not installed: Procedure is complete.
- If heat shield (A) is installed: Continue with this Procedure:

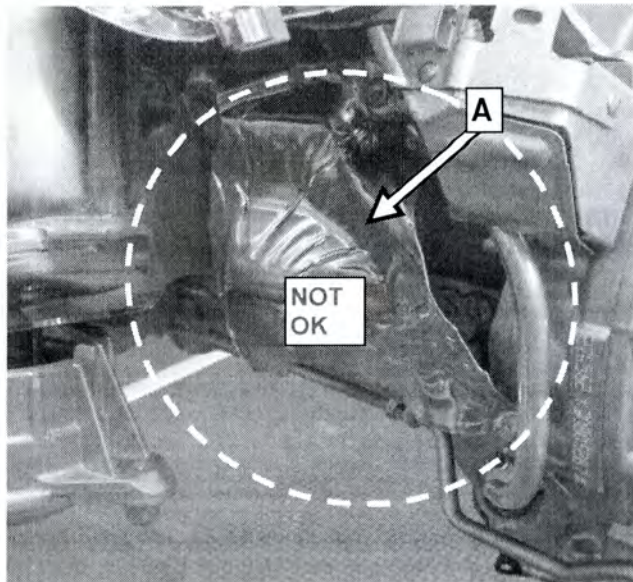


Figure 1 (not OK)

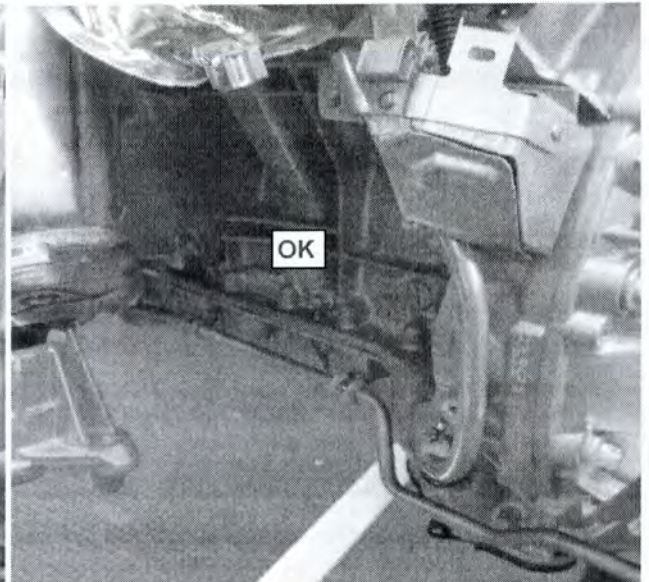


Figure 2 (OK)

3. Remove heat shield (A, Figure 1):
  - Remove center section of lower engine compartment panel; refer to WIS: AR61.20-P-1105EW.
  - Remove fasteners, then remove heat shield (A).
4. Assemble in reverse order.

**i** Note:

The following allowable labor operation should be used when submitting a warranty claim for this repair:

**Warranty Information****Repair 1**

**Operation:** Check heat shield on engine (02-9113).

| Damage Code | Operation Number | Labor Time (hrs.) |
|-------------|------------------|-------------------|
| 49 901 35 8 | 02-9113          | 0.1               |

**Repair 2**

**Operation:** Check heat shield on engine (02-9113).  
Remove heat shield from engine (02-9114).

| Damage Code | Operation Number | Labor Time (hrs.) |
|-------------|------------------|-------------------|
| 49 901 35 8 | 02-9113          | 0.1               |
|             | 02-9114          | 0.3               |

**i** Note

Operation Number labor times are subject to change.