

# SB-10058397-8947

<b style="font-size: 1.2em; margin-left: 10px;">HYUNDAI</b>   NEW THINKING. NEW POSSIBILITIES.  <b style="font-size: 1.1em;">Technical Service Bulletin</b>	GROUP <b>CAMPAIGN</b>	NUMBER <b>15-01-028</b>
	DATE <b>JUNE 2015</b>	MODEL(S) <b>ACCENT (RB)</b>

## AUXILIARY CANISTER REPLACEMENT AND CANISTER CLOSE VALVE (CCV) CLEANING (SERVICE CAMPAIGN TX4)

### ★ IMPORTANT

#### \*\*\* Dealer Stock and Retail Vehicles \*\*\*

Dealers must perform this Service Campaign on all affected vehicles prior to customer retail delivery and whenever an affected vehicle is in the shop for any maintenance or repair.

When a vehicle arrives at the Service Department, access Hyundai Motor America's "Warranty Vehicle Information" screen via WEBDCS to identify open Campaigns.

**Description:** The Auxiliary Canister in certain vehicles may pass carbon particle contamination to the Canister Close Valve (CCV) causing DTC P0455 – “Evaporative System (EVAP) - Large Leak” to store in the ECM. Replace the Auxiliary Canister and then clean the inside of the CCV in accordance with the procedures in this bulletin.

**NOTE:** There are no vehicle performance issues associated with this condition.

**Applicable Vehicles:** Certain 2015 Accent vehicles.

### Parts Information:

Part Name	Part Number	Remark
CASE-CANISTER (Auxiliary Canister)	 314211R600QQH	White or yellow colored mark added

### Warranty Information:

Model	Op. Code	Operation	Op. Time
RB	50C015R1	AUXILIARY CANISTER REPLACEMENT AND CANISTER CLOSE VALVE (CCV) CLEANING	0.5

**NOTE:** Submit Claim on Campaign Claim Entry Screen

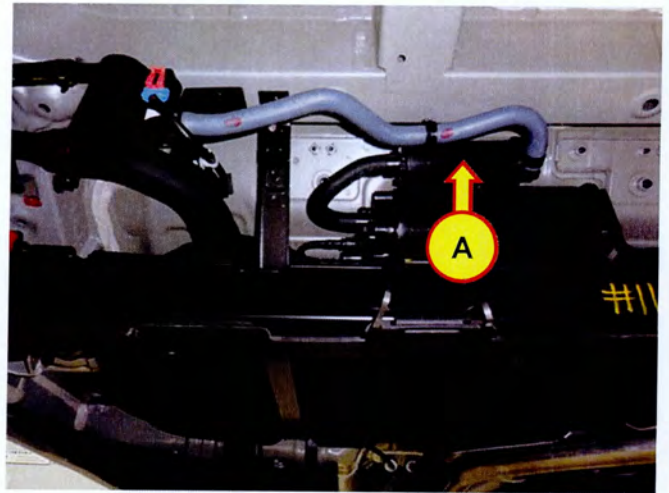
Circulate To: General Manager, Service Manager, Parts Manager, Warranty Manager, Service Advisors, Technicians, Fleet Repair

**SUBJECT:**

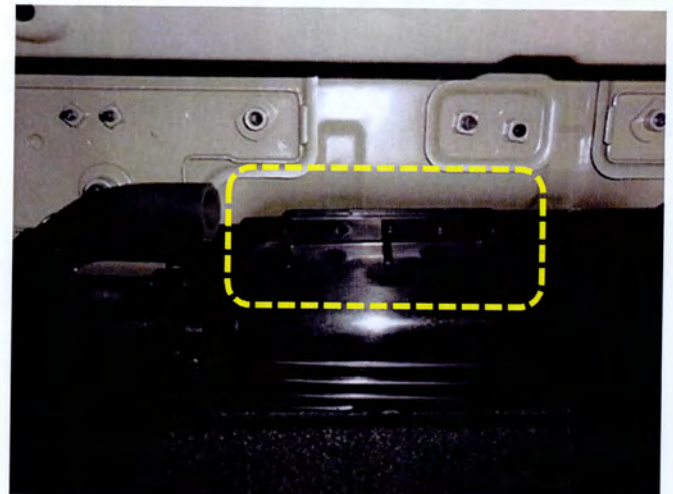
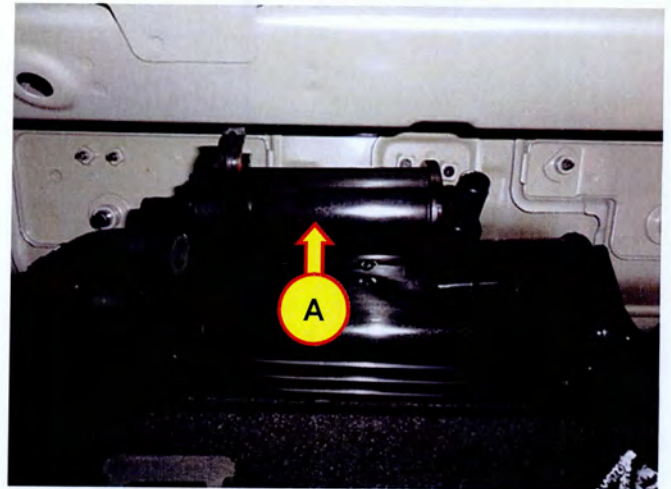
**AUXILIARY CANISTER REPLACEMENT AND CANISTER CLOSE VALVE (CCV) CLEANING  
(SERVICE CAMPAIGN TX4)**

**Service Procedure:**

1. Disconnect the vapor hoses from the Auxiliary canister (A).



2. Remove the Auxiliary canister (A) after removing the mounting bolt/nut.



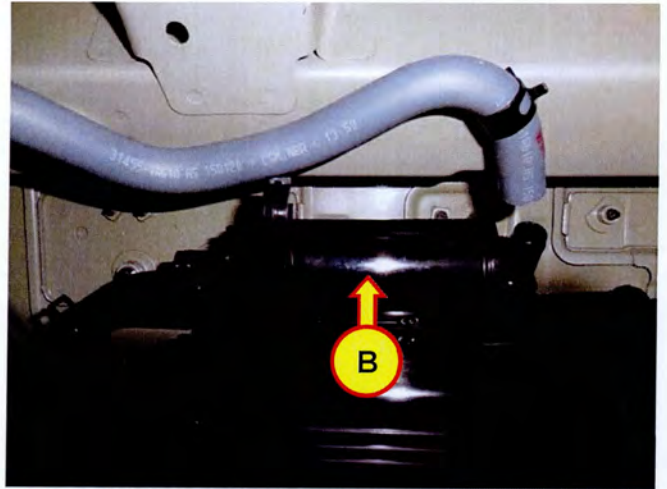


**SUBJECT: AUXILIARY CANISTER REPLACEMENT AND CANISTER CLOSE VALVE (CCV) CLEANING (SERVICE CAMPAIGN TX4)**

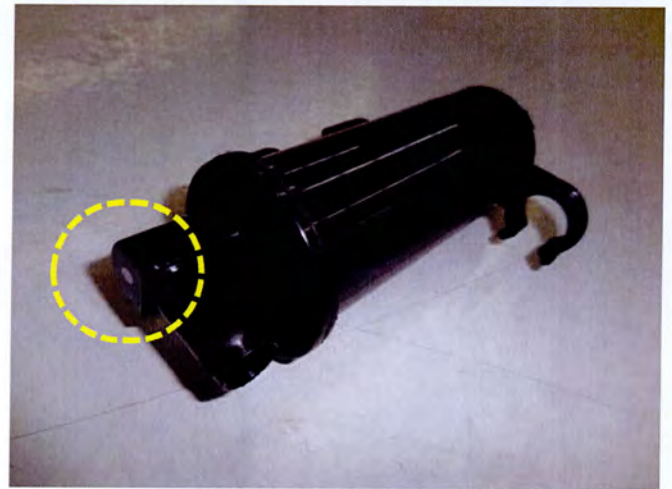
3. Install the new Auxiliary canister (B).

**Tightening torque :**

4.9 ~ 5.9 Nm (0.5 ~ 0.6 kgfm, 3.6 ~ 4.3 lb-ft)

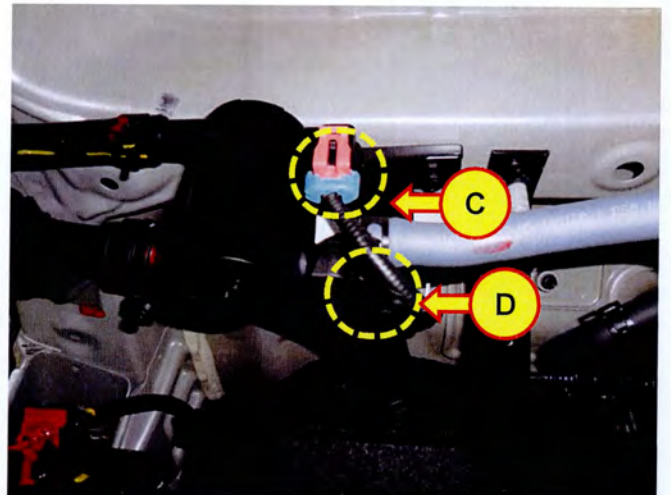


**NOTE:** The new Auxiliary canister (B) has a white or yellow colored mark added.



**CANISTER CLOSE VALVE (CCV) CLEANING**

4. Disconnect the canister close valve connector (C), and then release from the fixing hook (D).

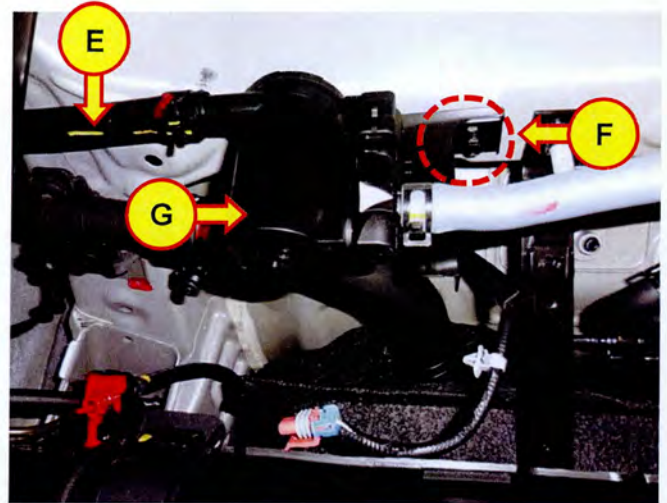


**SUBJECT:****AUXILIARY CANISTER REPLACEMENT AND CANISTER CLOSE VALVE (CCV) CLEANING  
(SERVICE CAMPAIGN TX4)**

5. Disconnect the vapor hose (E), remove the mounting bolt (F), and then remove the canister air filter & canister close valve assembly (G).

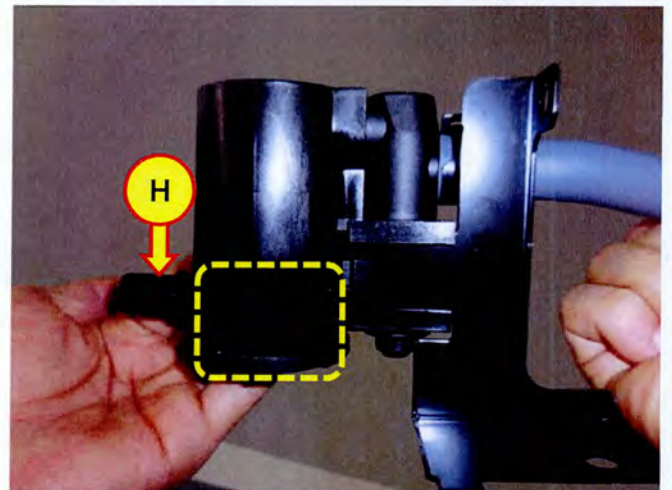
**Tightening torque:**

4.9 ~ 5.9 Nm (0.5 ~ 0.6 kgfm, 3.6 ~ 4.3 lb-ft)



6. Check for possible charcoal particles inside the canister air filter (G) by shaking it.

- If there are any particles, remove them as follows:
  - 1) Shake the canister air filter (G) to gather particles near the nipple (H).
  - 2) Remove them through the nipple (H).
  - 3) Repeat 1) and 2) until all particles have been removed.
- If there aren't any more particles; go to next step.

**NOTICE**

Do not attempt to use shop compressed air to clean out the CCV it may damage the valve.

