

# Service Campaign Bulletin

SB-10058279-2210



Mercedes-Benz

Campaign No. 2015050003, May 2015

TO: ALL MERCEDES-BENZ CENTERS

SUBJECT: **Model X204 (GLK), Model Year 2014**  
**Check Door Seam Seals**

Daimler AG (DAG), the manufacturer of Mercedes-Benz vehicles, has determined that the seam seals at the doors may be incomplete and allow water intrusion. To correct this condition an authorized Mercedes-Benz dealer will check the door seam seals and apply sealant as required at the next dealer visit.

Prior to performing this Service Campaign:

- Please check VMI to determine if the vehicle is involved in the Campaign and if it has been previously repaired.
- Please review the entire Service Campaign bulletin and follow the repair procedure exactly as described.

Approximately 109 vehicles are affected.

Order No. P-SC-2015050003

This bulletin has been created and maintained in accordance with MBUSA-SLP S423QH001, Document and Data Control, and MBUSA-SLP S424HH001, Control of Quality Records.

# Service Campaign Bulletin

Service Campaign Bulletin

Service Campaign Bulletin

Service Campaign Bulletin

Service Campaign Bulletin

### Procedure

1. Check seam seal at driver, front passenger and rear doors at left and right in area of hinge reinforcement to the inner door panel (S-shape deformation) (Figures 1 and 2).
  - If seam seal is **OK**: **Procedure is complete.**
  - If seam seal is **NOT OK**: Proceed to step 2.
2. Apply transparent seam sealant in faulty area.

**i** **Note:**

Be sure to clean affected area prior to applying seam sealant.

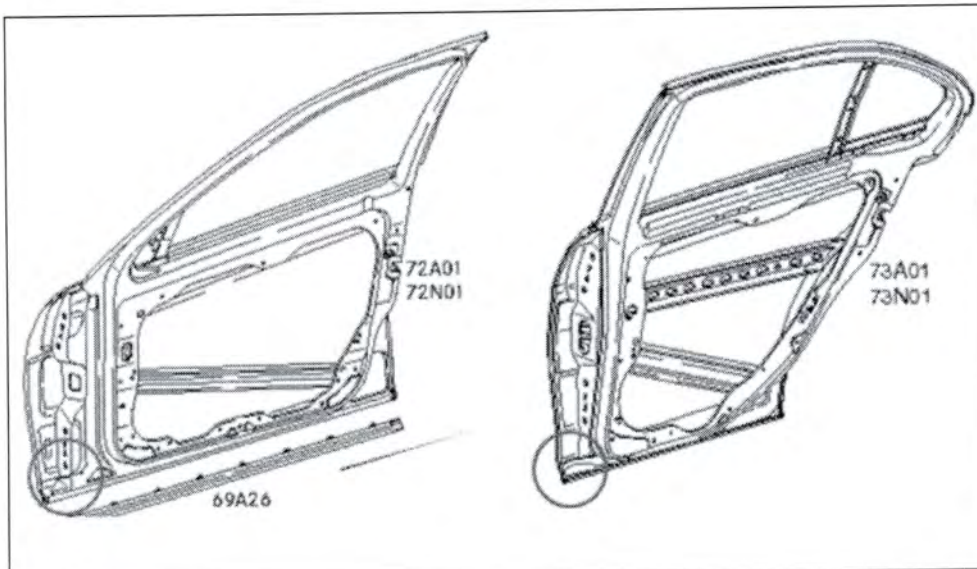


Figure 1

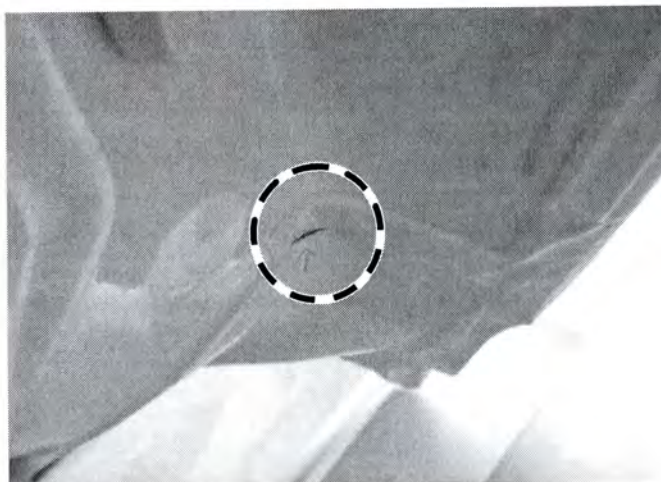


Figure 2

**i** **Note** (regarding WIS documents referenced in this Procedure):

Replacement of parts not listed in the parts table of this Procedure are not claimable under this campaign. If replacement of additional part(s) is necessary, check coverage prior to submitting under warranty.

### Workshop Equipment



Caulking Gun

Locally Sourced

**Note:**

Use a standard size caulking gun to apply the seam sealer p/n A 004 989 29 20 which is a 310ml caulking tube with the standard size plastic applicator tip.

### Primary Parts Information

Qty.	Part Name	Part Number	Estimated Replacement Rate
1*	Seam sealant	A004 989 29 20	10%

\* 1 container is sufficient for 5 vehicles. Submit as Qty. of 0.2 on the warranty claim.

**i** Note:

- Please be aware that only the part number(s) referenced in the Campaign Bulletin is/are approved for use to repair the vehicle. Repairs performed using any other part(s) will not have been performed in accordance with the campaign. Accordingly, warranty claims submitted with reference to an improper part number(s) will be denied.
- The following allowable labor operation should be used when submitting a warranty claim for this repair:

**Warranty Information****Repair 1**

**Operation:** Check seam seal at doors (all) (02-9083)

Damage Code	Operation Number	Labor Time (hrs.)
97 900 41 8	02-9083	0.1

**Repair 2**

**Operation:** Check seam seal at doors (all) (02-9083)

Rework seam seal at doors (all) (02-9084)

Damage Code	Operation Number	Labor Time (hrs.)
97 900 41 7	02-9083	0.1
	02-9084	0.1

**i** Note

Operation Number labor times are subject to change.