



Technical Bulletin

NISSAN NORTH AMERICA, INC.
Copyright ©

SERVICE BULLETIN

Classification:

WT14-002b

Reference:

NTB14-015b

Date:

April 9, 2015

2014-2015 ROGUE; TPMS CONFIGURATION

This bulletin has been amended. The Applied Vehicles section has been revised.
Please discard previous versions of this bulletin.

APPLIED VEHICLES:

2014-2015 Rogue (T32)

NOTE: This bulletin does not apply to Rogue Select (S35)

SERVICE INFORMATION

When a BCM is replaced for any reason, TPMS (Tire Pressure Monitor System) configuration must be performed.

TPMS configuration is in addition to any other BCM configurations that may be performed.

If TPMS configuration is not performed, TPMS transmitter ID registration will not complete.

Follow the **SERVICE PROCEDURE** in this bulletin to perform TPMS configuration.

Nissan Bulletins are intended for use by qualified technicians, not 'do-it-yourselfers'. Qualified technicians are properly trained individuals who have the equipment, tools, safety instruction, and know-how to do a job properly and safely. **NOTE:** If you believe that a described condition may apply to a particular vehicle, DO NOT assume that it does. See your Nissan dealer to determine if this applies to your vehicle.

SERVICE PROCEDURE

1. Connect the CONSULT-III plus (C-III plus) Vehicle Interface (plus VI) to the vehicle.
2. Turn the ignition ON.
3. Open / start C-III plus.
4. Wait for the plus VI to be recognized.
 - The serial number will display when the plus VI is recognized.
5. Select **Re/programming, Configuration**.

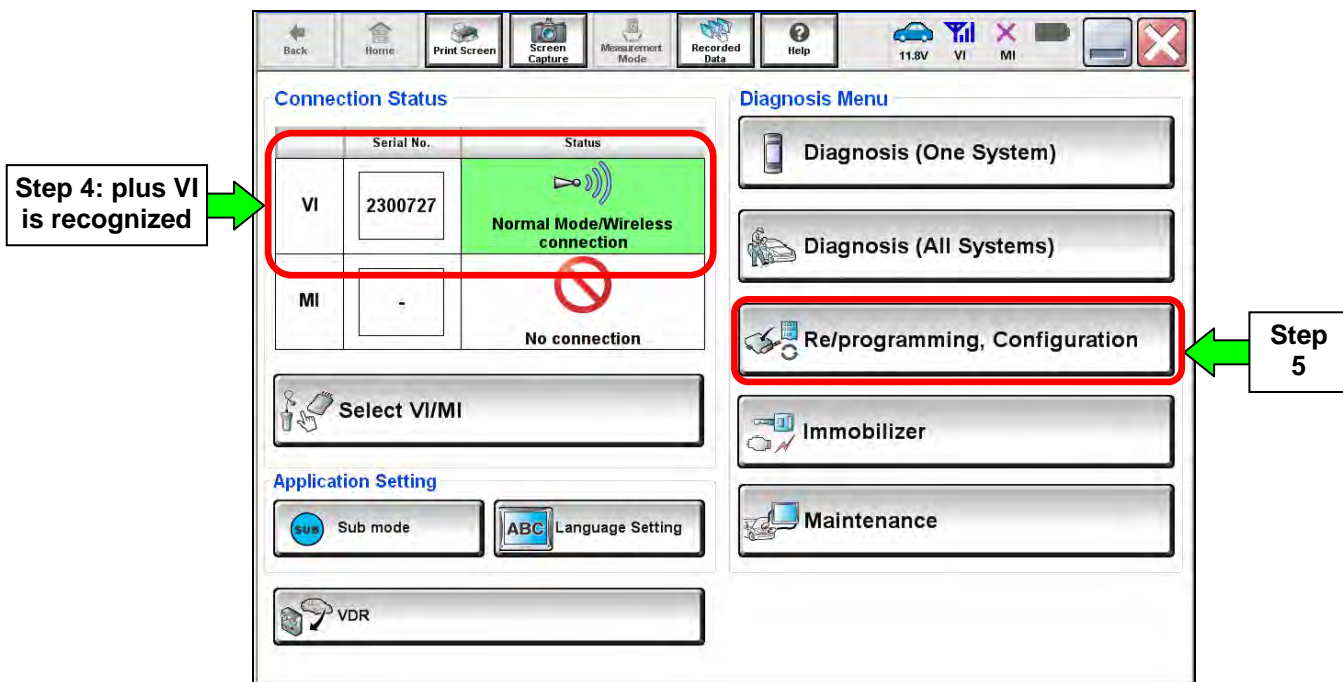


Figure 1

6. Use arrows (if needed) to view and read all precautions.
7. Check the box confirming the precautions have been read.
8. Select **Next**.

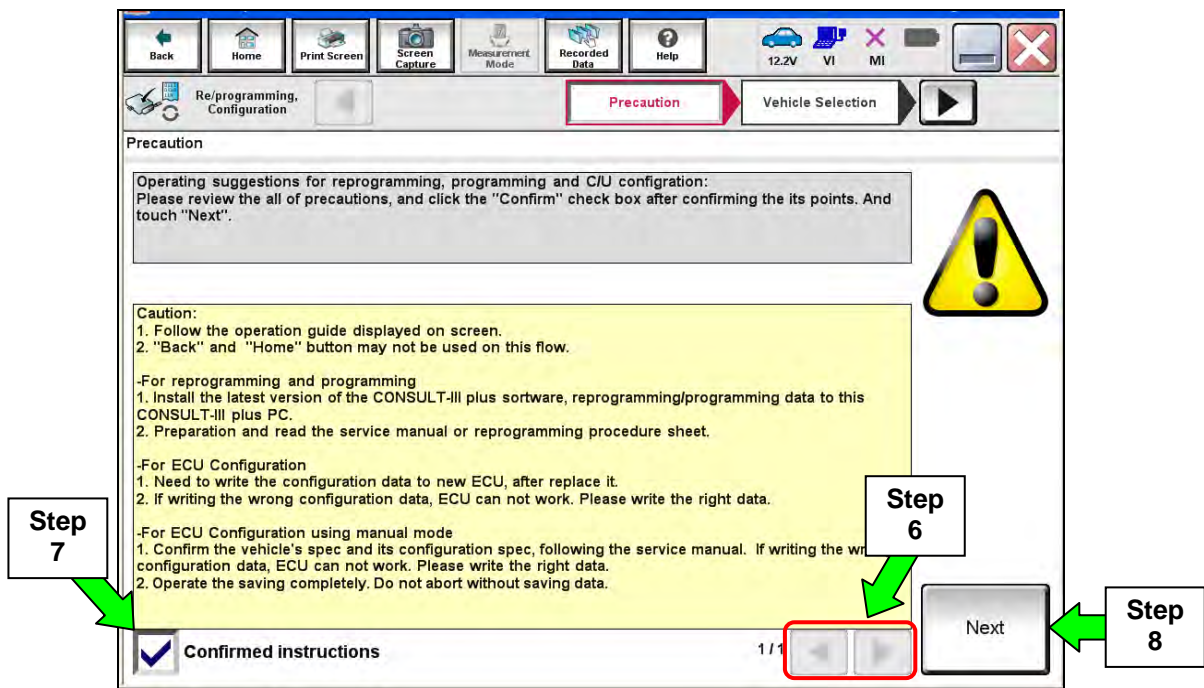


Figure 2

9. Select **Nissan**, **Vehicle Name**, correct **Model Year**, and then **Select**.

- If the screen in Figure 3 does not display, skip to step 10.

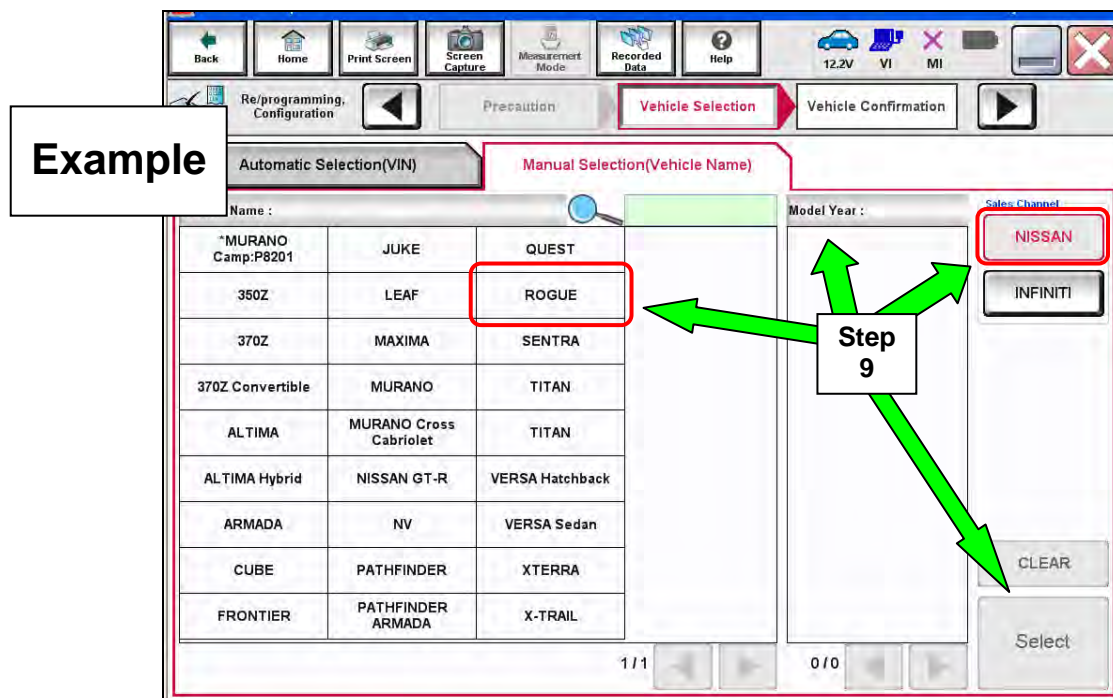


Figure 3

10. Make sure **VIN or Chassis #** matches the vehicle's VIN.

11. Select **Confirm**.

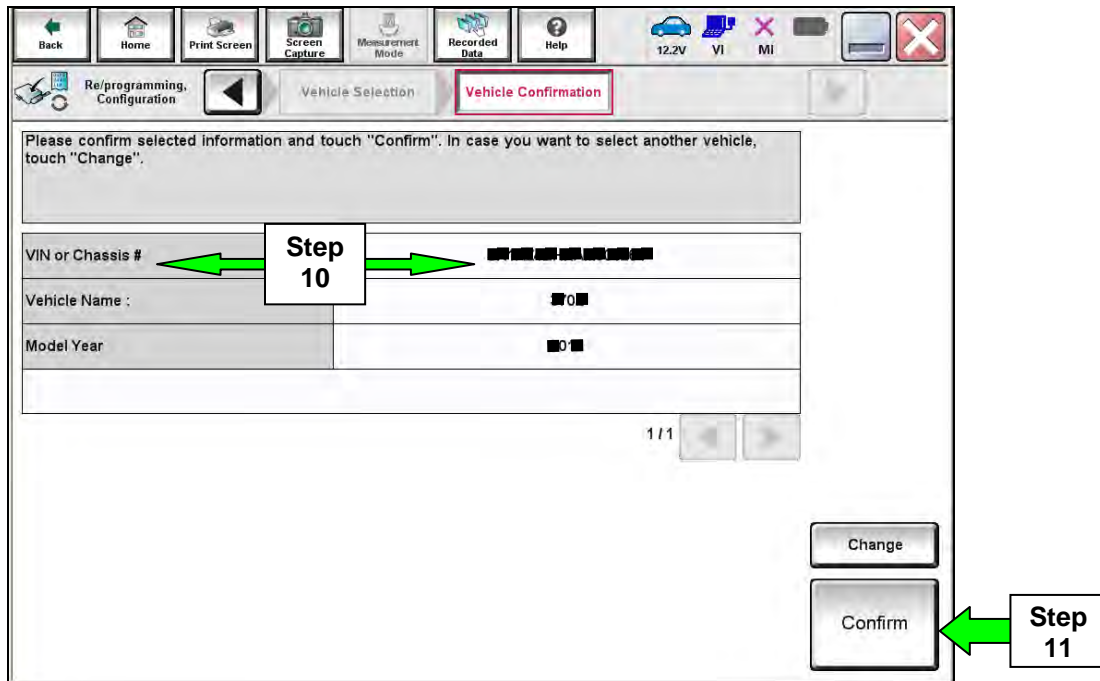


Figure 4

12. Select **Confirm**.

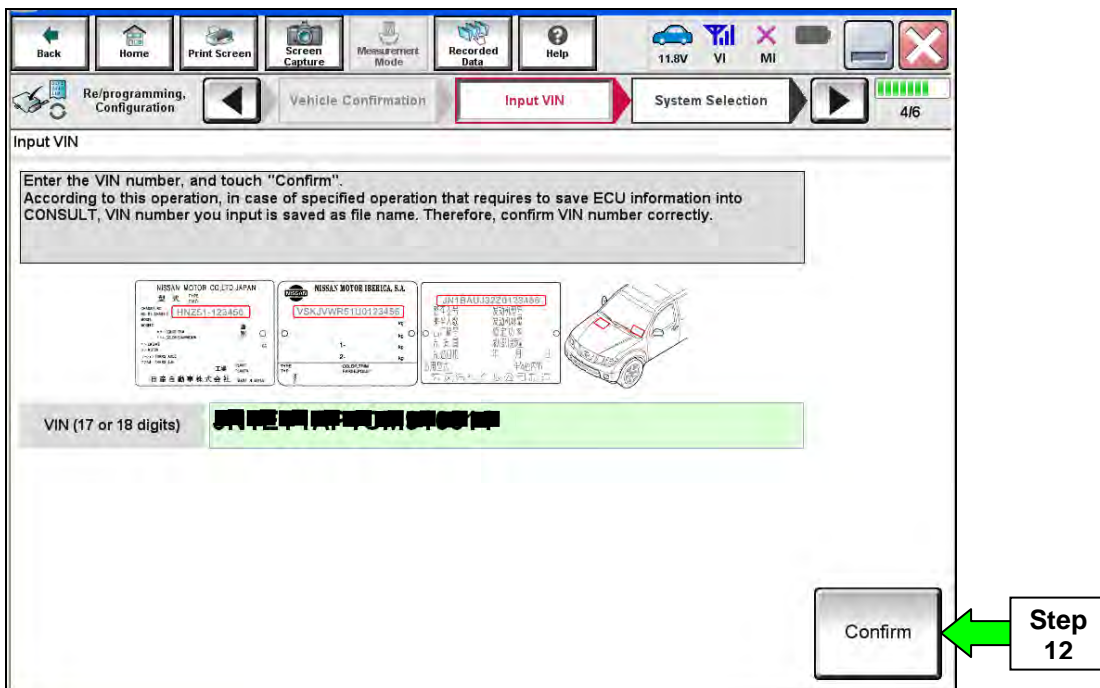


Figure 5

13. Select Air Pressure Monitor.

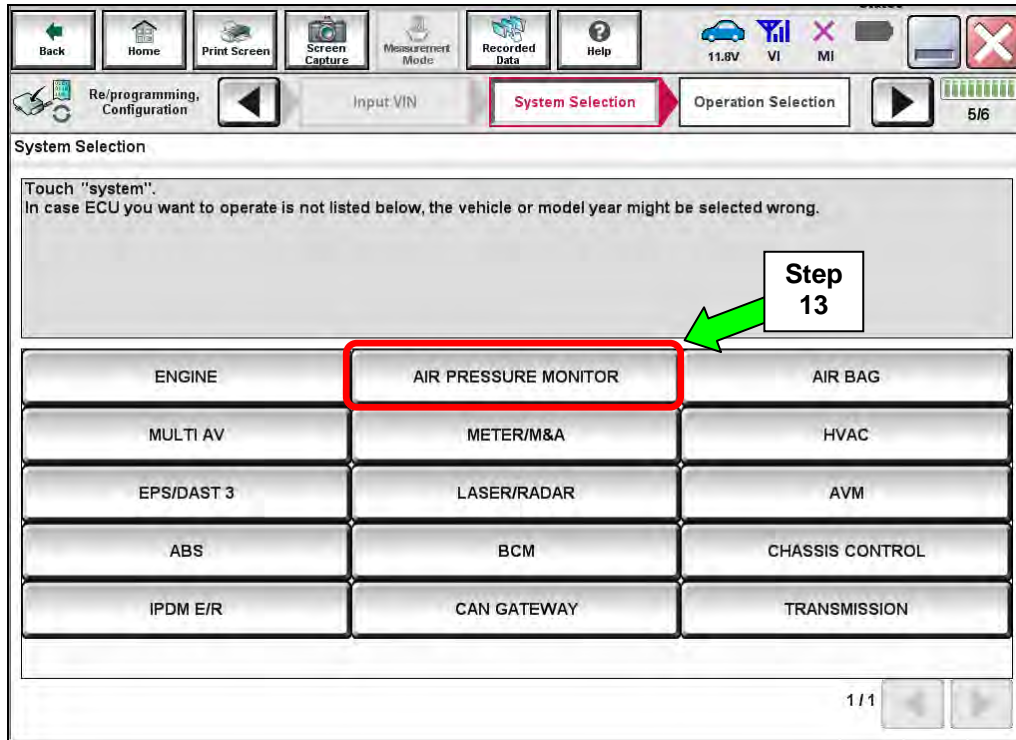


Figure 6

14. Select Manual Configuration.

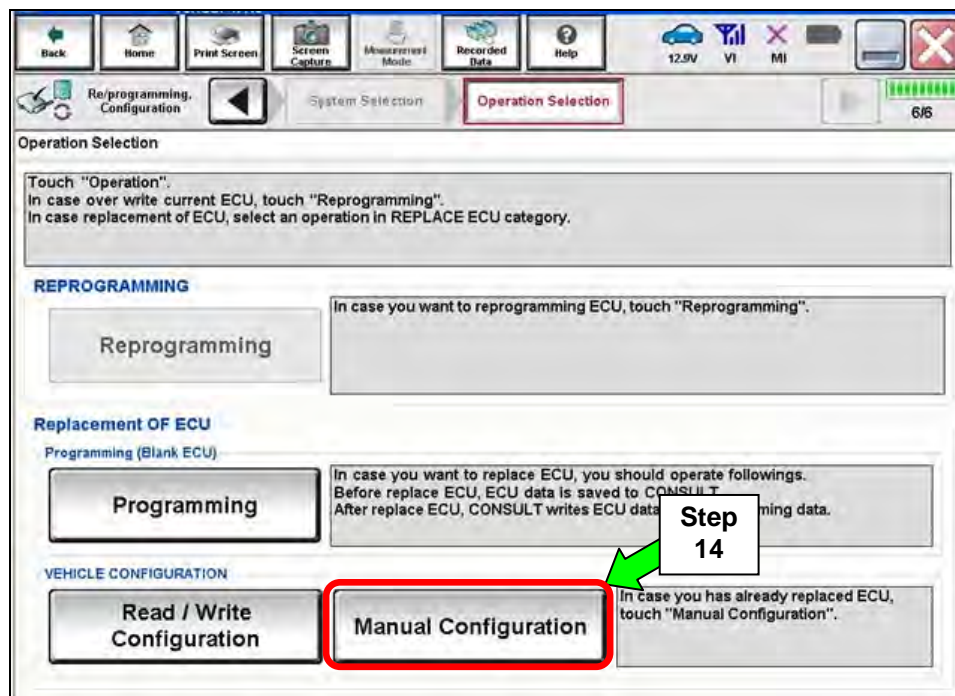
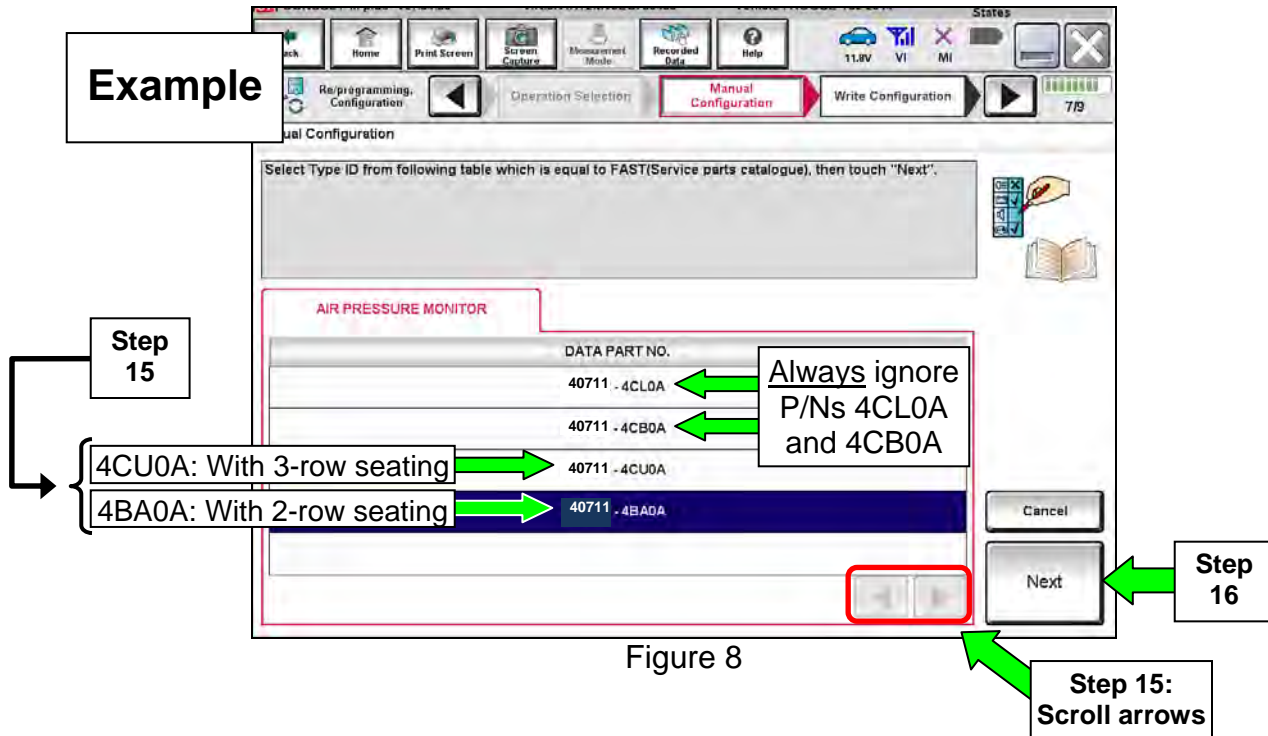


Figure 7

15. Select the **DATA PART NO.** that matches your vehicle's configuration – with 2-row or 3-row seating.

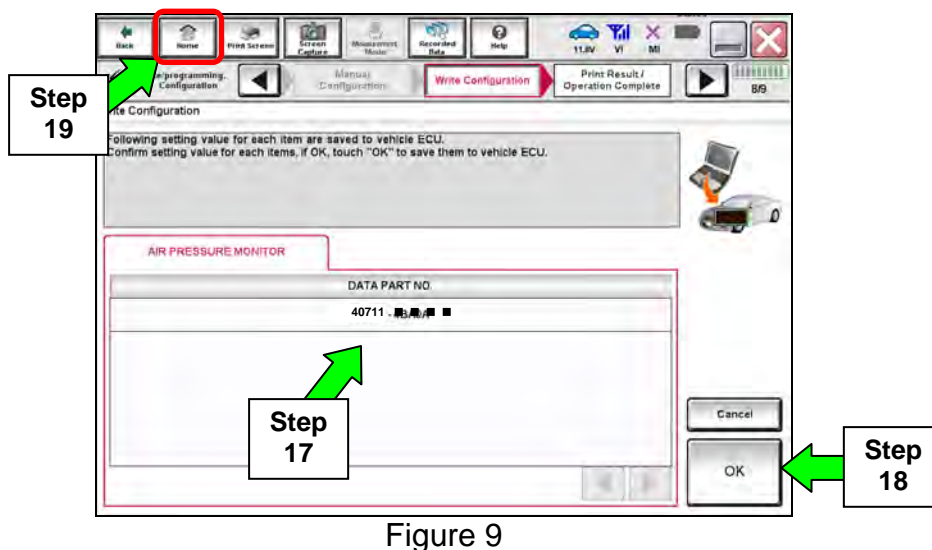
- Use the scroll arrows to scroll and find the correct DATA PART NO. / BCM part number.

16. Select **Next**.



17. Confirm the correct **DATA PART NO.** is selected.

18. Select **OK**. TPMS configuration is complete.



19. Select **Home**, and then close and disconnect C-III plus from the vehicle.