



Service Bulletin

SERVICE UPDATE

SUBJECT: Service Update for Inventory and Customer Vehicles
Parking Brake Cable
Expires with Base Warranty

MODELS: 2013-2014 Buick Encore

This service update includes vehicles in dealer inventory and customer vehicles that return to the dealership for any reason. This bulletin will expire at the end of the involved vehicle's New Vehicle Limited Warranty period.

PURPOSE

This bulletin provides a service procedure to visually inspect the interface of the park brake cable-to-equalizer bracket under the shift console on **certain** 2013-2014 model year Buick Encore vehicles for proper seating of the equalizer to the cable-end fitting. On some of these vehicles, the equalizer may not be properly seated to the cable-end fitting, which necessitates a readjustment of the park-brake cable assembly.

This service procedure should be completed as soon as possible on involved vehicles currently in dealer inventory and customer vehicles that return to the dealer for any type of service during the New Vehicle Limited Warranty coverage period.

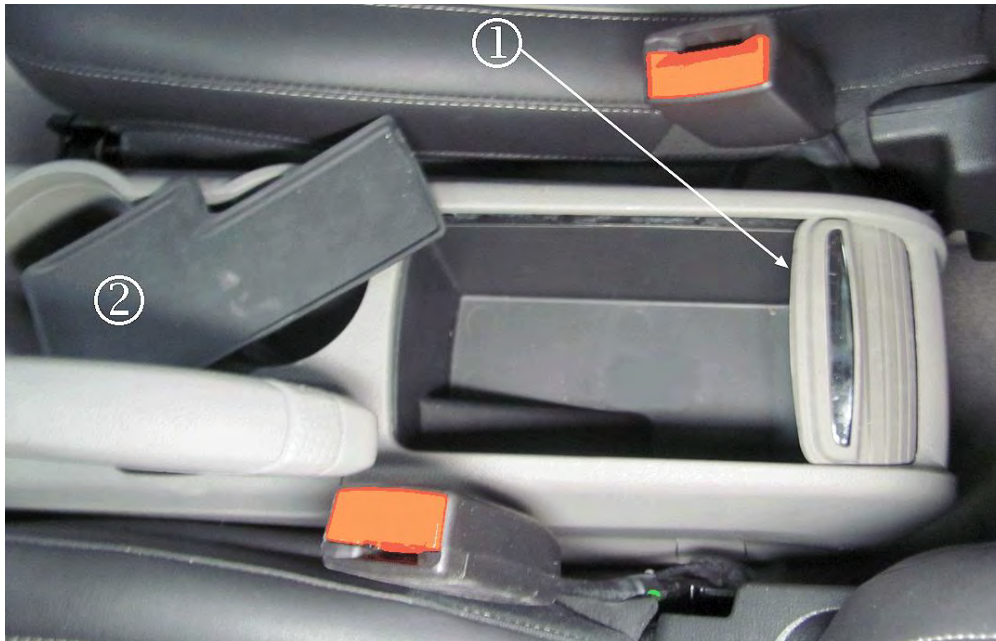
VEHICLES INVOLVED

All involved vehicles are identified by VIN in the Global Warranty Management System – Investigate Vehicle History Application. Dealership technicians should always check this site to confirm vehicle involvement prior to beginning any required inspections and/or repairs. It is important to routinely use this tool to verify eligibility because not all similar vehicles may be involved regardless of description or option content.

Additionally, a list of involved vehicles currently in dealer inventory is available on the "Service Update Bulletin Information" link under the "Service" tab in GM GlobalConnect (US) or attached to the GlobalConnect message (Canada) used to release this bulletin. Customer vehicles that return for service, for any reason, and are still covered under the vehicle's base warranty should also be checked for vehicle eligibility.

PART INFORMATION

No parts are required for this update.

SERVICE PROCEDURE

1. Open the rear front floor console lid (1).
2. Remove the rubber pad (2) from the storage area of the front floor console.



3. Locate the center mold impression (1). The mold impression (1) is approximately centered in the bottom plastic floor of the front floor console storage area.
4. Mark the mold impression with a white marker (1).



4089241

Note: Use a brad point or pilot point drill bit to drill the hole.

5. Drill a 16 mm (5/8 in) diameter hole (3) in the center of the mold impression.



4089238

6. Clean plastic debris from the storage area of the front floor console. Ensure debris is removed from the 16 mm (5/8 in) hole.

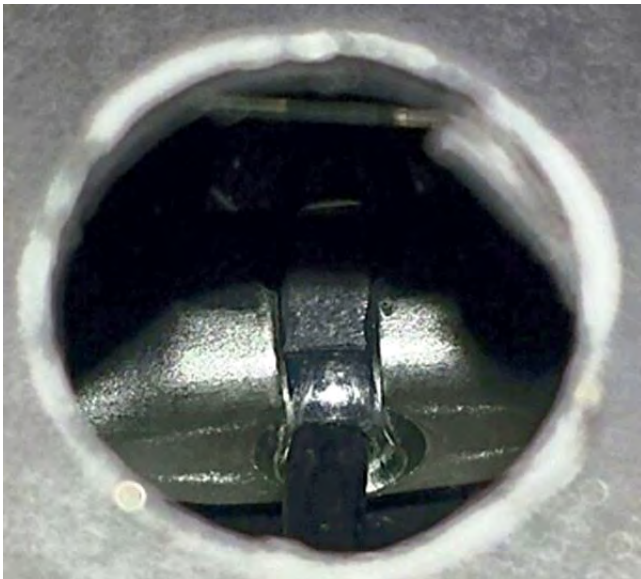
Note: Do NOT pull up on the park brake lever more than 3-4 clicks to avoid dislodging the park brake cable. Applying the park brake to 3-4 clicks will enable the technician to view the condition of the cable ferrule.

7. Pull up on the park brake lever until 3-4 clicks are observed.



4089284

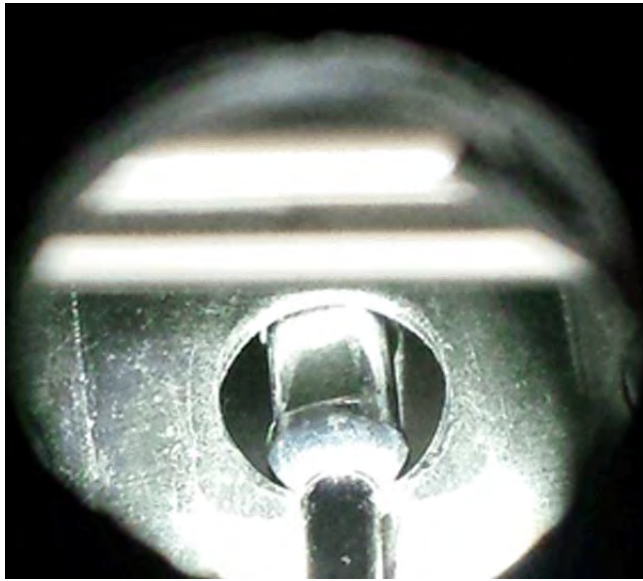
8. Locate the equalizer and cable end using a flash light. Point the flash light through the 16 mm (5/8 in) hole and toward the rear of the front floor console to view the equalizer and cable end.
9. Determine if the cable ferrule is fully seated in the equalizer slot.



4089232

Cable ferrule end is fully seated in the equalizer slot.

- If the cable ferrule is fully seated in the equalizer slot, no further action is required. Install the rubber pad in the storage area of the front floor console and close the storage area lid.



Cable ferrule end is NOT seated down in the equalizer slot.

- If the cable ferrule is NOT fully seated in the equalizer slot, proceed to step 10.

10. Release the park brake lever.



11. Remove the rubber cup holder liner (4) and plastic cup holder access panel (5).

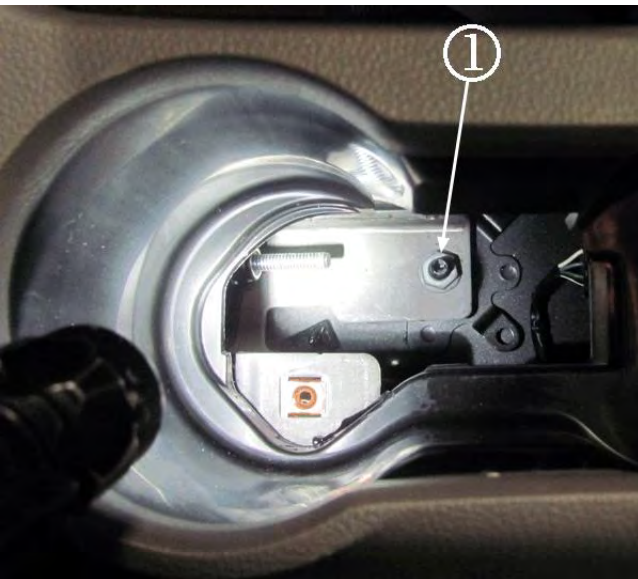


4089290

12. Illuminate the equalizer and cable ferrule with a flash light through the opening below the cup holder.

Note: A small hammer or mallet may be required to gently tap on the end of the screw driver.

13. Use a flat-blade screw driver to push on the cable ferrule as shown to properly seat the connection.



4089234

Note: Removal of the front floor console is NOT required. Access to the park brake cable adjusting nut is through the bottom of the cup holder section of the console. The rubber cup holder liner and plastic cup holder access panel were removed in step 11. The park brake cable adjusting nut is a nylon lock type. Use ONLY HAND TOOLS whenever tightening or loosening the adjusting nut.

14. Adjust the park brake cable tension. Refer to *Parking Brake Adjustment* in SI.
15. Install the plastic cup holder access panel and rubber cup holder liner.
16. Install the front floor console rear storage area rubber pad and close the front floor console rear storage area lid.

WARRANTY TRANSACTION INFORMATION

Submit a transaction using the table below. All transactions should be submitted as a ZFAT transaction type, unless noted otherwise.

Labor Code	Description	Labor Time
9101342	Inspect Park Brake Cable – No Further Action Req'd	0.3
9101343	Inspect & Adjust Park Brake Cable	0.6

DEALER PROGRAM RESPONSIBILITY

Whenever a vehicle subject to this service update enters your vehicle inventory, or is in your facility for service in the future, and the vehicle is still covered under the New Vehicle Limited Warranty, you must take the steps necessary to be sure the service update correction has been made before selling or releasing the vehicle.

