

**NUMBER:** 19-003-15**GROUP:** Steering**DATE:** April 10, 2015

*This bulletin is supplied as technical information only and is not an authorization for repair. No part of this publication may be reproduced, stored in a retrieval system, or transmitted, in any form or by any means, electronic, mechanical, photocopying, or otherwise, without written permission of FCA US LLC.*

**SUBJECT:**

Intermittent Power Steering Noise And/Or Slight Loss Of Assist

**OVERVIEW:**

This bulletin involves draining the vehicle's existing power steering fluid and refilling with new fluid as well as installing a new power steering fluid caution label.

**MODELS:**

2015 (LA) Dodge Challenger

**NOTE:** This bulletin applies to vehicles built on or after August 19, 2014 (MDH 0819XX) and on or before January 05, 2015 (MDH 0105XX) equipped with a 6.2L engine (sales code ESD).

**SYMPTOM/CONDITION:**

A small number of customers may experience an objectionable noise from the power steering system at times. In addition, they may also experience a slight loss of assist intermittently.

**DIAGNOSIS:**

If the customer describes the symptom/condition listed above, perform the Repair Procedure.

**PARTS REQUIRED:**

Qty.	Part No.	Description
1 (AR)	68284636AA (MS-10838)	Label, Power Steering Caution
(AR)	68234631AA (MS-10838)	Fluid, Power Steering Qt.

**REPAIR PROCEDURE:**

1. Raise the hood and remove the power steering reservoir cap.
2. On a suitable hoist, raise and support the vehicle. Refer to the detailed service procedures available in DealerCONNECT/TechCONNECT Service Info Section 04 - Vehicle Quick Reference> Hoisting> Standard Procedure.

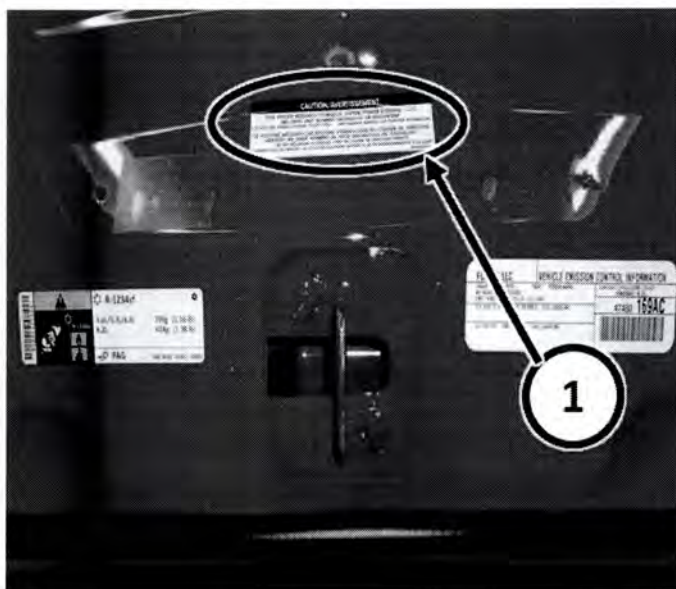
- Remove the belly pan to gain access to the power steering gear. Refer to the detailed service procedures available in DealerCONNECT/TechCONNECT Service Info section 13 - Frame and Bumpers> Under Body Protection> BELLY PAN, Engine> Removal.

**CAUTION: Never run the engine with the fluid lines disconnected. Permanent damage to the steering gear and/or pump may result.**

- Disconnect the low pressure return line from the steering gear and allow all fluid to drain. Rotating the steering wheel back and forth, from stop to stop, with the engine off will help drain as much fluid as possible from the system.

**NOTE: Vehicles were originally shipped with Automatic Transmission Fluid (ATF) +4 in the steering system which is compatible with the new MS-10838 (pn# 68234631AA) fluid being used in this repair procedure. Any residual fluid left in the gear and pump after draining is acceptable.**

- Install the low pressure return line and tighten to 38 nm (28 ft lb).
- Install the belly pan. Refer to the detailed service procedures available in DealerCONNECT/TechCONNECT Service Info section 13 - Frame and Bumpers> Under Body Protection> BELLY PAN, Engine> Installation.
- Fill the system with the specified MS-10838 (pn# 68234631AA) fluid and bleed the system of all air. Refer to the detailed service procedures available in DealerCONNECT/TechCONNECT Service Info section 19 - Steering> Standard Procedure> Power Steering System Bleeding.
- Install the new power steering caution label under hood. Refer to (Fig. 1).



**Fig. 1 Underhood View**

1 - Power steering label installation location.

**POLICY:**

Reimbursable within the provisions of the warranty.

**TIME ALLOWANCE:**

<b>Labor Operation No:</b>	<b>Description</b>	<b>Skill Category</b>	<b>Amount</b>
19-00-02-92	Fluid - Power steering drain and refill, includes system bleeding and label installation (0 - Introduction)	4 - Chassis	0.4 Hrs.

**FAILURE CODE:**

ZZ	Service Action
----	----------------