



## Draft Entering Cabin from A-Pillar

<b>Classification</b>	Repair Bulletin	<b>Section/Group</b>	11 - Closures	<b>Country/Region</b>	All
<b>Year</b>	2012-2014	<b>Model</b>	Model S	<b>Version</b>	All

**Bulletin Classification:** This repair bulletin provides instructions and guidelines for a noted condition or a customer concern. The information provided can address a broad range of known or perceived issues with the operation of Tesla vehicles. This bulletin might not be VIN-specific. These instructions assume knowledge of motor vehicle and high voltage electricity repairs, and should only be executed by trained professionals. Tesla Motors assumes no liability for injury or property damage due to a failure to properly follow these instructions or repairs attempted by unqualified individuals.

### Condition

Some Model S customers have complained about air entering the cabin from the fixed glass near the A-pillar. Air enters around the exterior door handles and enters the cabin through the top edge of the door trim panel (Figure 1). This condition is intensified when climate control is set to "Recirculate" or when the vehicle is moving.

**NOTE:** The draft is more noticeable in cold climates.



Figure 1

## Correction

Upon customer complaint of a draft entering the cabin from either front fixed glass area, remove both front door panels and install upgraded fixed glass seals (Figure 2).



Figure 2

Required Part(s):	Part Number	Description	Quantity
	1039364-00-A	FIXED GLASS SEAL LH	1
	1046148-00-A	FIXED GLASS SEAL RH	1
	1025401-00-A	CLIP, HEART FLEX W/ WSHR 70 LBS RETENTION	18

These part numbers were current at the time of publication. Use the revisions listed or later, unless otherwise specified in the Parts Manual.

Correction Description	Correction	Time
Vehicle Inspection Only; Upgraded Front Fixed Glass Seals Not Required	S011511001	0.15
Install LH And RH Front Fixed Glass Seals	S021511001	0.40

## Procedure

1. Remove the driver's side front door trim panel (refer to Service Manual procedure 15130201).
2. If equipped, remove and discard the old fixed glass seal (Figure 3) or any foam in the gaps below the fixed glass (Figure 4).

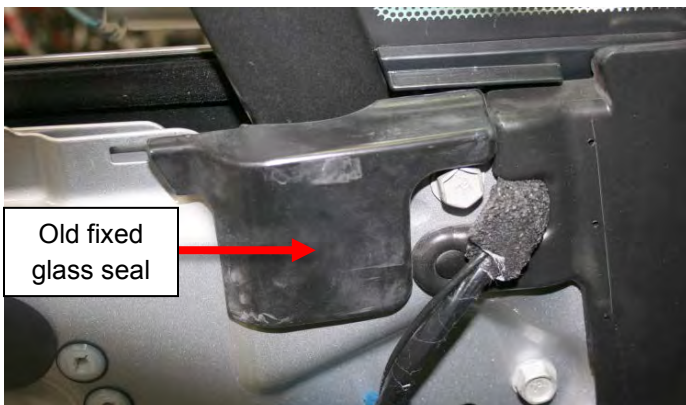


Figure 3



Figure 4 (Foam pieces highlighted)

- Place the upgraded fixed glass seal straight down over the gap between the fixed glass and moving glass so that the flaps on the bottom side of the fixed glass seal rests on the edge of the sheet metal (Figures 5 and 6).

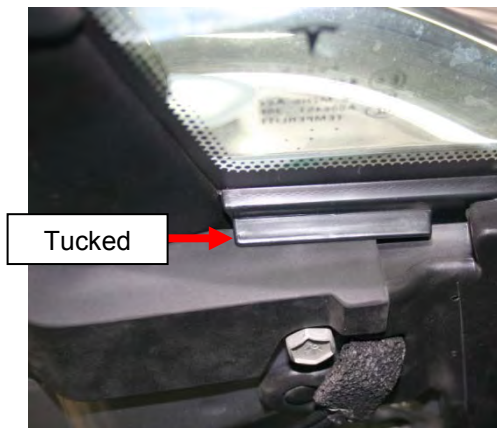


**Figure 5 (Bottom side shown)**



**Figure 6**

- Tuck the front portion of the fixed glass seal under the flap near the fixed glass (Figures 7 and 8).

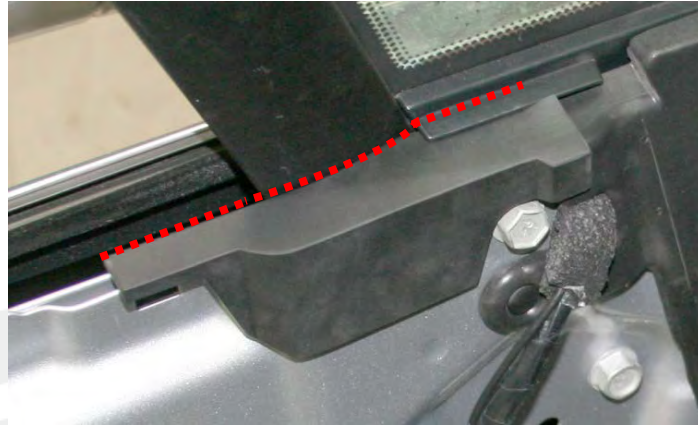


**✓ Figure 7 (Correct)**



**✗ Figure 8 (Incorrect)**

5. Ensure that there are no large gaps between the fixed glass seal and the front windows where air can enter the cabin. The fixed glass seal should follow the contour of the door panel (Figure 9).



**Figure 9 (Contour of fixed glass seal shown)**

6. Reinstall the driver's side front door trim panel.

**⚠ CAUTION:** Replace all flex heart clips before reinstalling the door trim panel; they are one-time use only.

7. Repeat steps 1-6 on the passenger's side.

---

**Affected VIN(s)** Affected Model S vehicles built before approximately December 16, 2014.

**NOTE:** This is a simplified summary of the affected VIN list. Refer to the VIN/Bulletin Tracker or Customer/Vehicle profile to determine applicability of this bulletin for a particular vehicle.

For feedback on the accuracy of this document, email [ServiceBulletinFeedback@teslamotors.com](mailto:ServiceBulletinFeedback@teslamotors.com).