



June 30, 2015

01317-01956 Version 5

Warranty Extension: Front Passenger and Left and Right Rear Passenger Door Lock Actuator

Supersedes 14-084, *Warranty Extension: Door Lock Actuator Does Not Work* dated June 18, 2015; to revise the information highlighted in yellow

AFFECTED VEHICLES

Year	Model	Trim	VIN Range
2007-09	CR-V	ALL	Check the iN VIN status for eligibility

REVISION SUMMARY

The driver's door lock actuator, which is part of the door latch assembly, is not part of this warranty extension. Refer to S/B 14-083 for more information about repairing the driver's door lock actuator.

Under PARTS INFORMATION, part numbers were changed.

BACKGROUND

American Honda is extending the warranty on all four door lock actuators, which is part of the door latch assembly, to 6 years from the original date of purchase or until November 7, 2015, whichever is later.

This warranty covers vehicles where the door lock actuator does not work or if the lock cycles from locked to unlocked.

The warranty extension does not apply to any vehicle that has ever been declared a total loss or sold for salvage by a financial institution or insurer or has a branded or similar title under any state's law.

There are two bulletins addressing the 2007-09 CR-V door lock actuators:

- S/B 14-083, *Product Update: Driver's Door Lock Actuator*
- S/B 14-084, *Warranty Extension: Front Passenger and Left and Right Rear Passenger Door Lock Actuator*

Make sure you use the correct bulletin for doing repairs and filing warranty claims.

Use this warranty extension for all repair and warranty claim information for the front passenger and both rear passenger door lock actuators.

Refer to Service Bulletin 14-083 *Product Update: Driver's Door Lock Actuator* for all repair and warranty claim information for the driver's door lock actuator.

Make sure 14-083 has been done before doing any repairs under 14-084. A faulty driver's door lock actuator can make the other door lock actuators appear faulty.

CUSTOMER NOTIFICATION

Owners of affected vehicles will receive a notification of this warranty extension.

Do an iN VIN status inquiry to make sure the vehicle is shown as eligible.

CORRECTIVE ACTION

Verify the door lock actuator does not work properly, and replace **only** the affected door latch assembly, which includes the door lock actuator.

CUSTOMER INFORMATION: The information in this bulletin is intended for use only by skilled technicians who have the proper tools, equipment, and training to correctly and safely maintain your vehicle. These procedures should not be attempted by "do-it-yourselfers," and you should not assume this bulletin applies to your vehicle, or that your vehicle has the condition described. To determine whether this information applies, contact an authorized Honda automobile dealer.

PARTS INFORMATION

Part Name	Part Number	Quantity
Front Passenger's Door Latch Assembly	72110-SWA-D01	1
Right Rear Door Latch Assembly	72610-SWA-A01	1
Left Rear Door Latch Assembly	72650-SWA-A01	1
Door Latch Seal	72114-SWA-A01	2
Door Lock Seal	72115-SWA-A01	1
Connector Seal	72113-SWA-A01	1

WARRANTY CLAIM INFORMATION

NOTE: For repairs made to the driver's door, refer to S/B 14-083, Product Update: *Driver's Door Lock Actuator*.

Operation Number	Description	Flat Rate Time	Defect Code	Symptom Code	Template ID	Failed Part Number
8191B9	Replace the front right (passenger's) door latch assembly.	0.6 hr.	5P800	JE300	14-084A	72110-SWA-D01
8211F5	Replace left rear door latch assembly.	0.6 hr.	5P800	JE300	14-084B	72650-SWA-A01
8221F1	Replace right rear door latch assembly.	0.6 hr.	5P800	JE300	14-084C	72610-SWA-A01

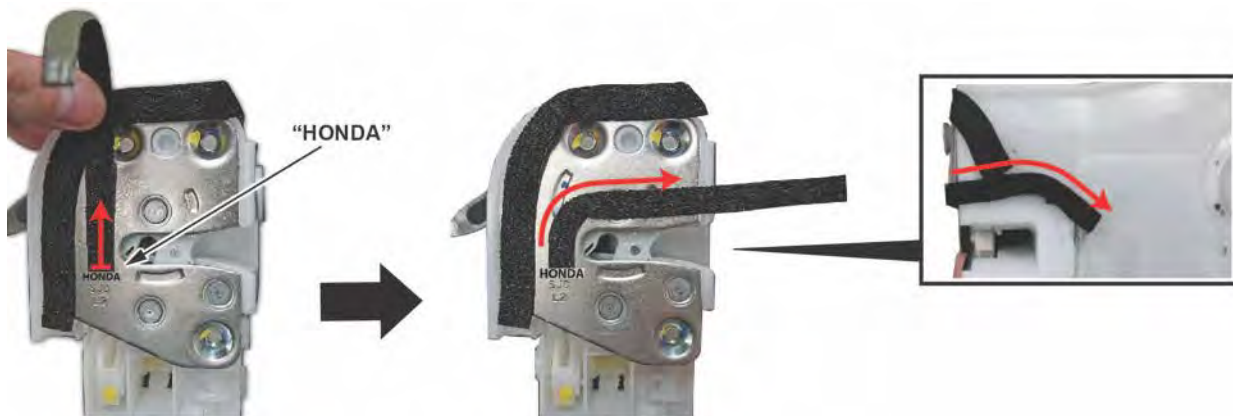
Skill Level: Repair Technician

REPAIR PROCEDURE

1. Remove the affected door latch; refer to the electronic service manual.
2. Attach a new door latch seal to the new door latch assembly.
 - Clean all the seal application areas with brake cleaner and a shop towel. Make sure you let it dry. If there is any grease or dirt on the housing, the weather seals may not stick properly.
 - Apply the door latch seal as shown; make sure the seal covers the three gaps between the latch and the actuator.

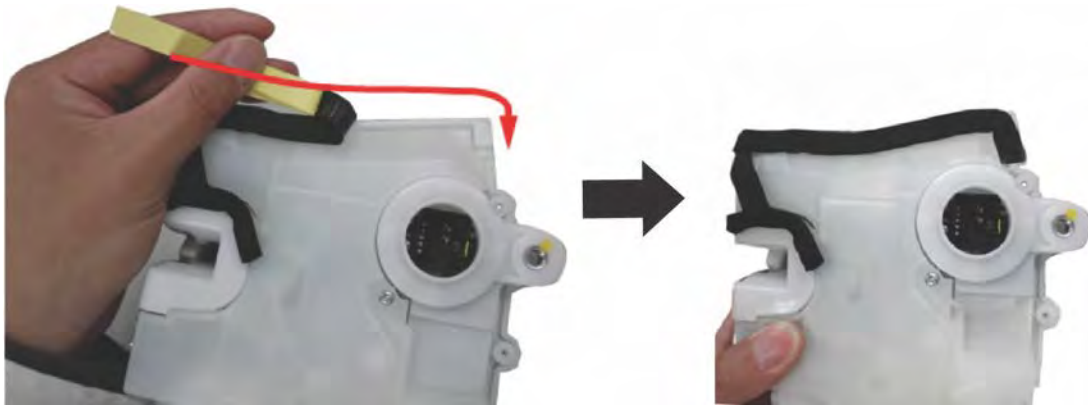


- Wrap the seal around the side of the assembly as shown.
3. Attach a new door lock seal.
 - Apply the door lock seal as shown; start just above the **HONDA** stamp.



- Wrap the seal around the side of the assembly as shown.
- Make sure the seals overlap each other as shown so there is no gap.

4. Using a new door latch seal, attach it along the upper gap between the latch and the protector cover as shown.



5. Apply the connector seal to the door latch assembly as shown.

CONNECTOR SEAL



6. Reinstall the door latch; refer to the electronic service manual.

END