



Technical Bulletin

NISSAN NORTH AMERICA, INC.
Copyright ©

SERVICE BULLETIN

Classification: BR14-007a	Reference: NTB14-115a	Date: December 18, 2014
------------------------------	--------------------------	----------------------------

ABS CONTROL UNIT CONFIGURATION / DTC C1170

**This bulletin has been amended to remove the instruction to call TECH LINE.
Please discard previous versions of this bulletin.**

APPLIED VEHICLES: 2013 – 2015 Altima (L33) with QR25 (4 cylinder) engine only
2015 Murano (Z52)
2014 – 2015 Rogue (T32)

NOTE: Does not apply to 2014 or 2015 Rogue Select (S35)

SERVICE INFORMATION

For the Applied Vehicles above, when an ABS Actuator and Electric Unit (ABS control unit) is replaced for any reason, Configuration of the ABS Control Unit must be performed.

If Configuration is not performed, DTC C1170 (VARIANT CODING) will be stored.

The Service Procedure in this bulletin contains the steps for performing ABS Control Unit Manual Configuration.

Nissan Bulletins are intended for use by qualified technicians, not 'do-it-yourselfers'. Qualified technicians are properly trained individuals who have the equipment, tools, safety instruction, and know-how to do a job properly and safely. NOTE: If you believe that a described condition may apply to a particular vehicle, DO NOT assume that it does. See your Nissan dealer to determine if this applies to your vehicle.

SERVICE PROCEDURE

NOTE:

Before removal of the old/current ABS control unit, use CONSULT-III plus (C-III plus) to read the ABS Control Unit “Type ID”.

If you are unable to access the old/current ABS control unit with C-III plus, replace it and then skip to Configuration of the New ABS Control Unit on page 5.

Read “Type ID”

1. Connect CONSULT-III plus (C-III plus) to the vehicle.
2. Turn the ignition ON.
3. Open / start C-III plus.
4. Wait for the plus VI to be recognized.
 - The serial number will display when the plus VI is recognized.
5. Select **Diagnosis (One System)**.

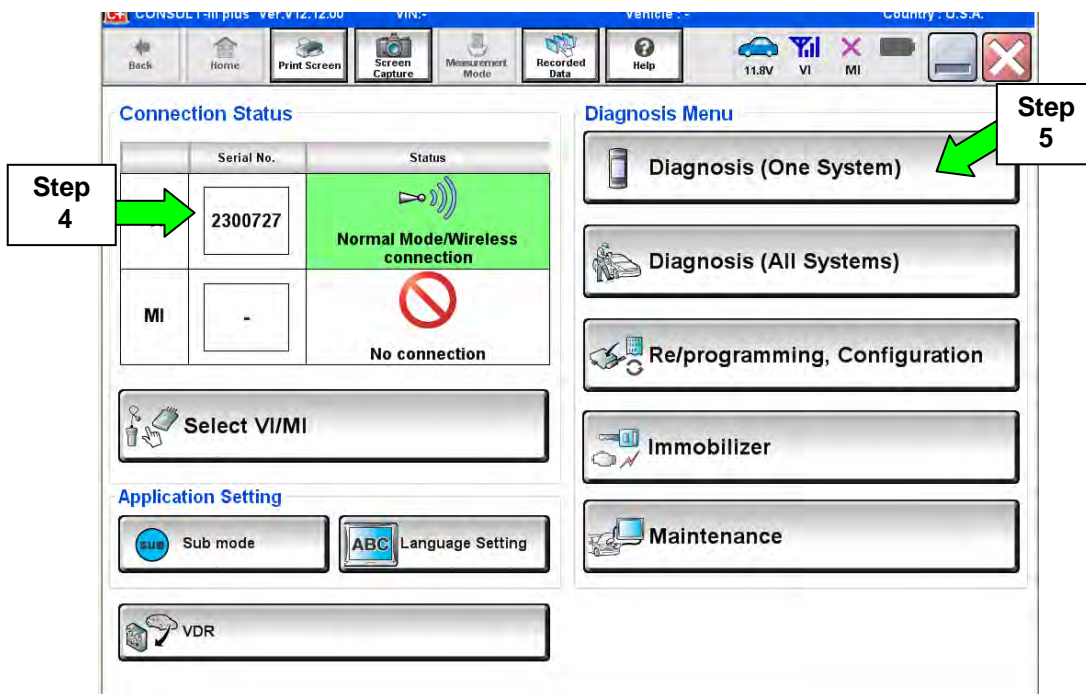


Figure 1

6. Select **ABS**.

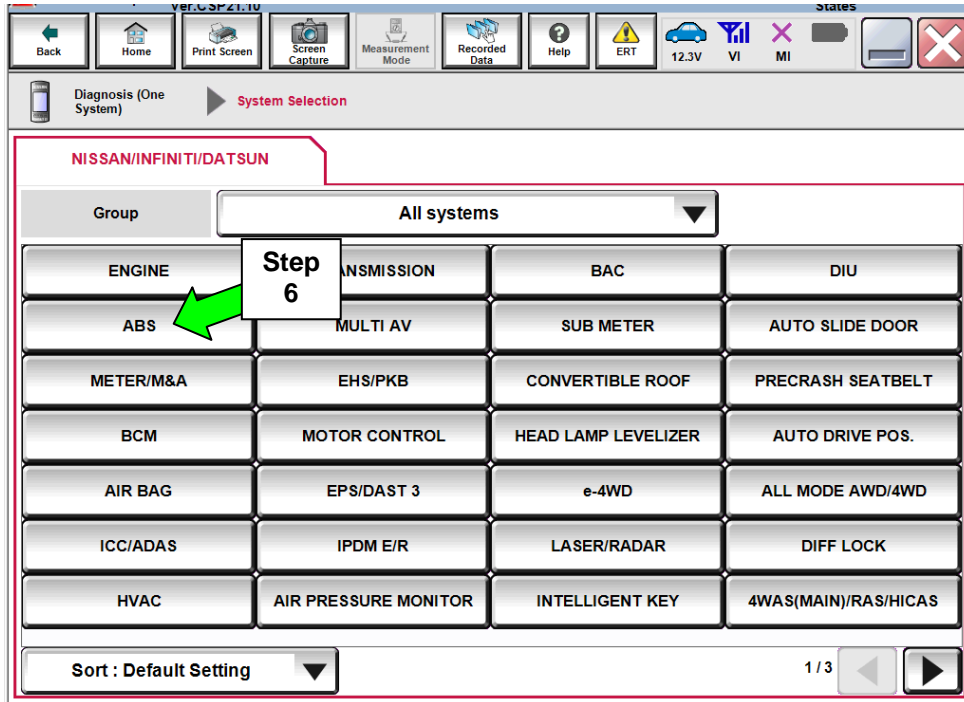


Figure 2

7. Select **ECU Identification**.

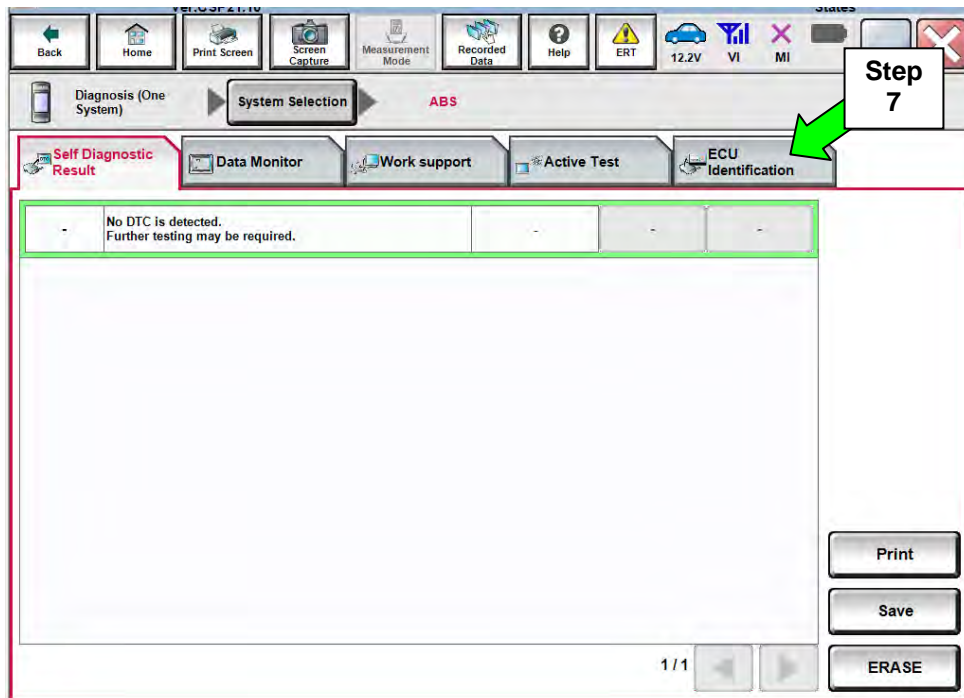


Figure 3

8. Write down the **ECU PART NUMBER** – this is the ABS control unit “Type ID”:

NOTE: This number will be used later for ABS control unit Manual Configuration.

9. Select **Home**.

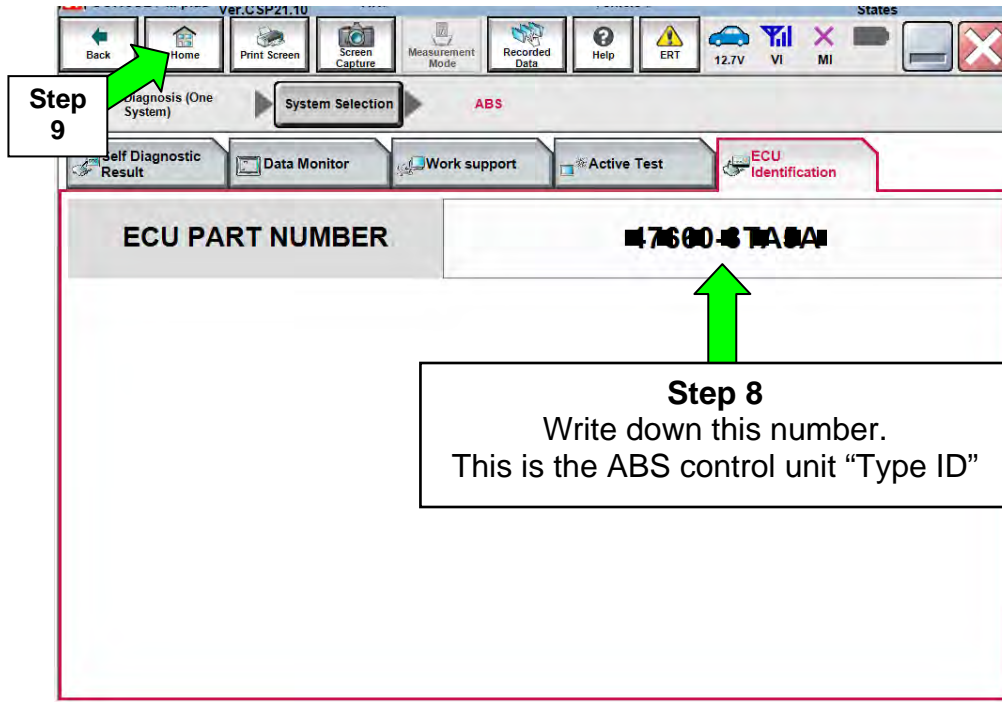


Figure 4

10. Replace the ABS control unit.

- Refer to the appropriate Electronic Service Manual (ESM) for ABS control unit replacement information.

11. Go to Configuration of the New ABS Control Unit on the next page.

Configuration of the New ABS Control

1. Connect C-III plus to the vehicle.
2. Turn the ignition ON.
3. Open / start C-III plus.
4. Wait for the plus VI to be recognized.
 - The serial number will display when the plus VI is recognized.
5. Select **Re/programming, Configuration**.

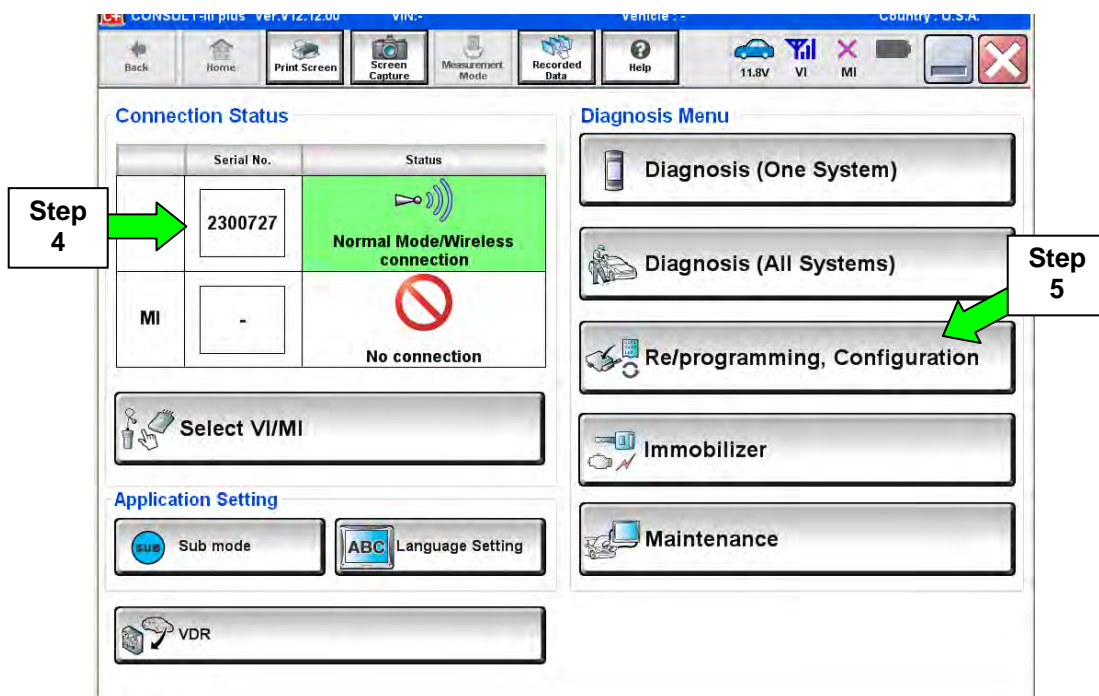


Figure C1

6. Use arrows (if needed) to view and read all precautions.
7. Check the box confirming the precautions have been read.
8. Select **Next**.

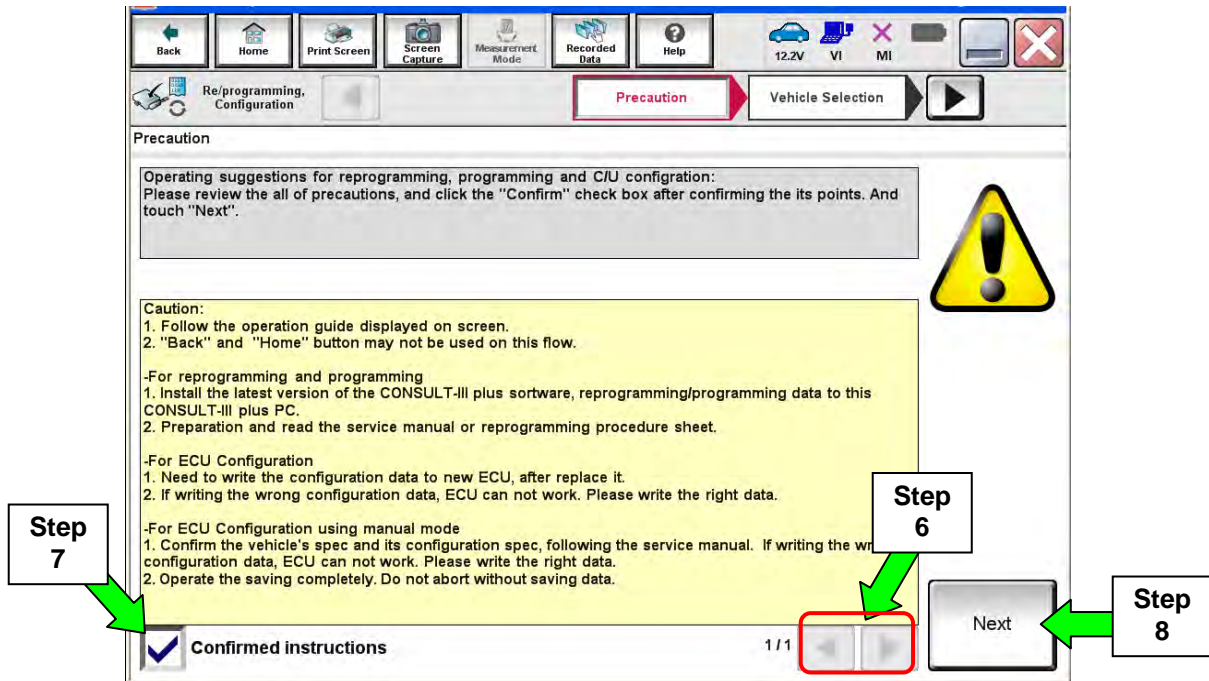


Figure C2

9. If the screen in Figure C3 displays select **Automatic Selection(VIN)**.
 - If the screen in Figure C3 does not display, skip to step 10.

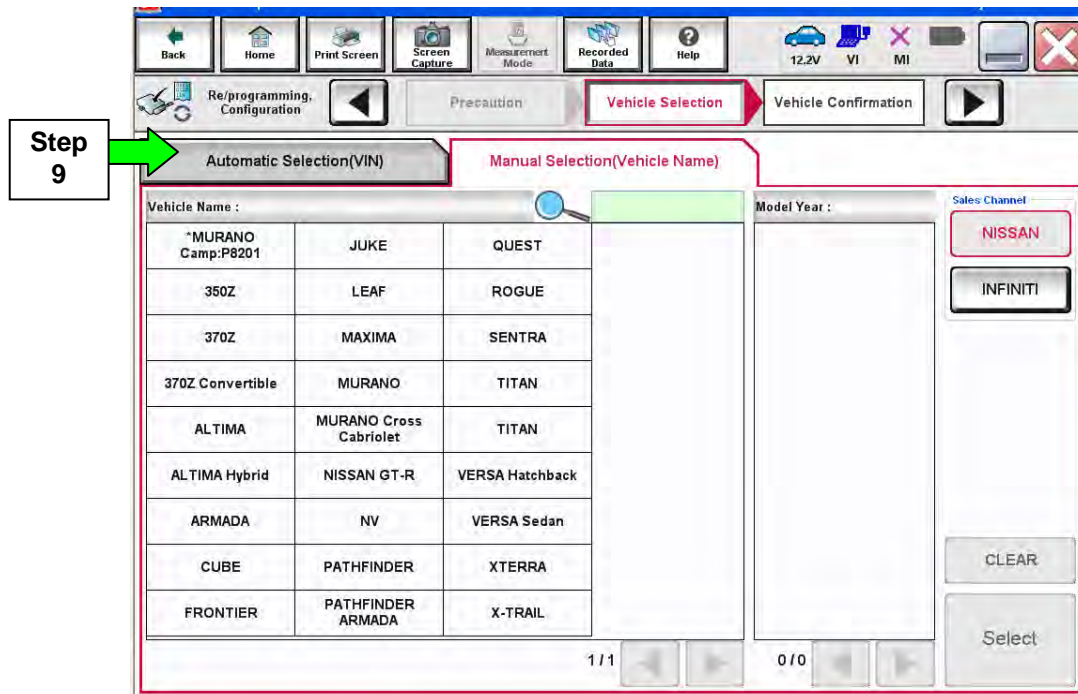


Figure C3

10. Make sure **VIN or Chassis #** matches the vehicle's VIN.

11. Select **Confirm**.

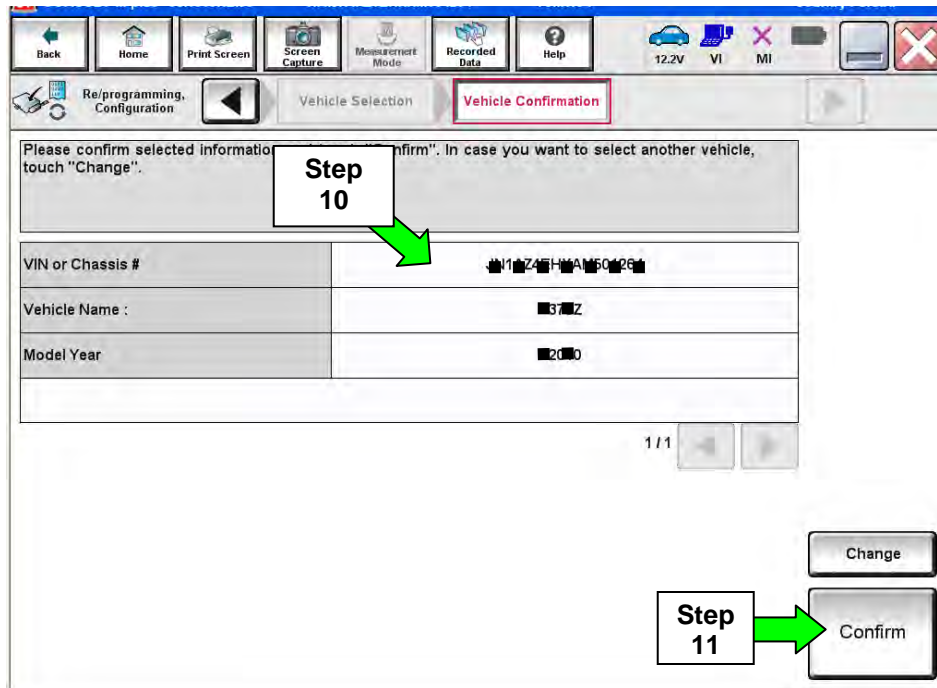


Figure C4

12. Select **Confirm**.

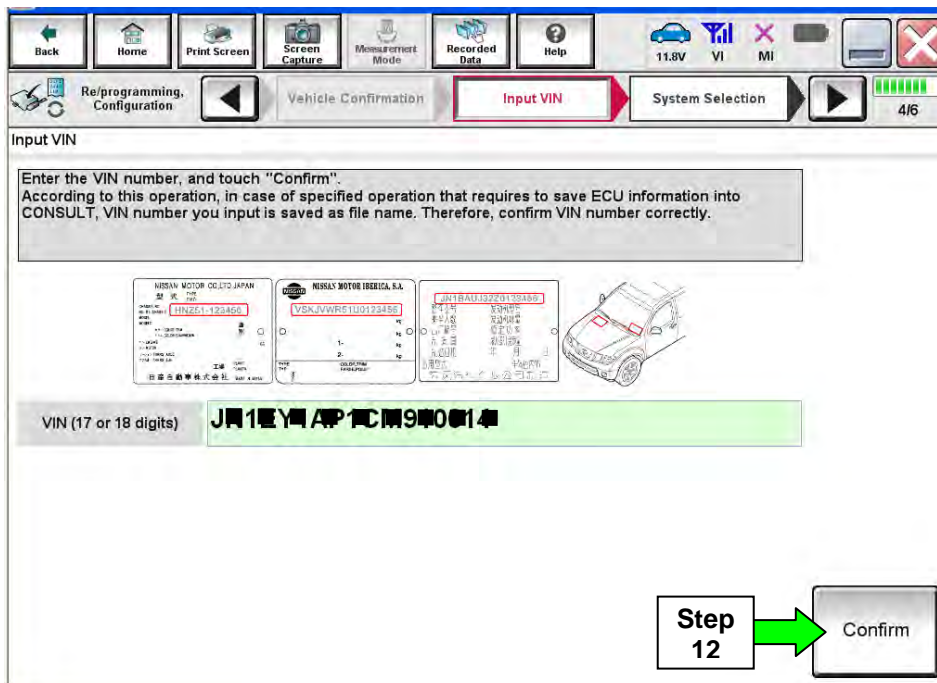


Figure C5

13. Select **ABS**.

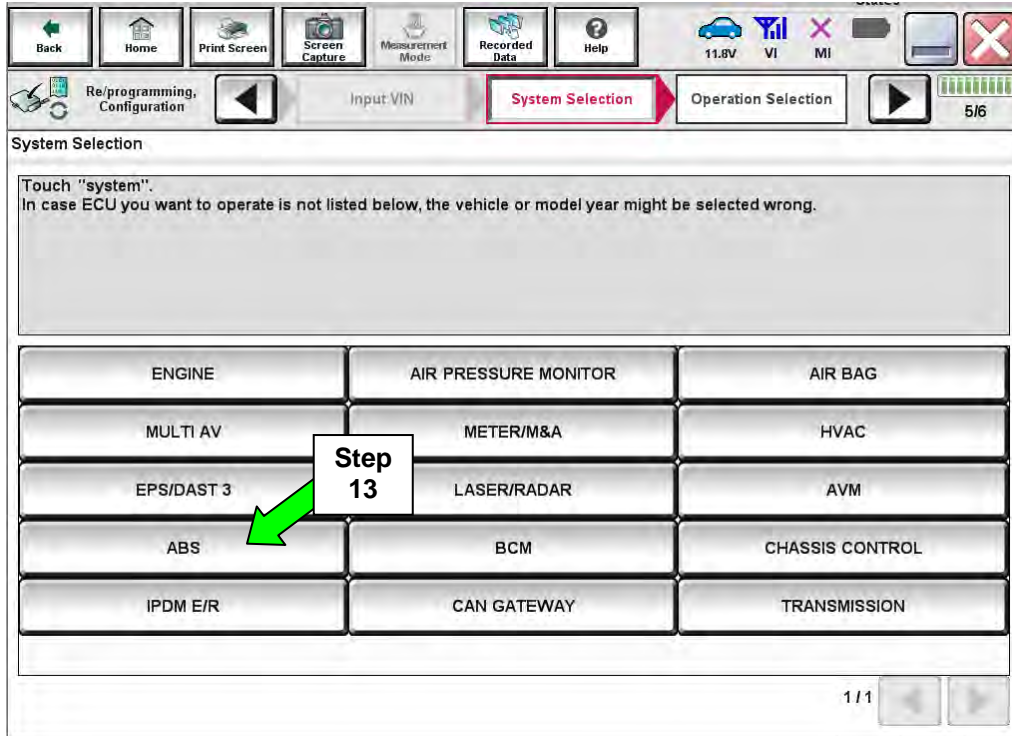


Figure C6

14. Select **Manual Configuration**.

- **DO NOT** select Reprogramming.

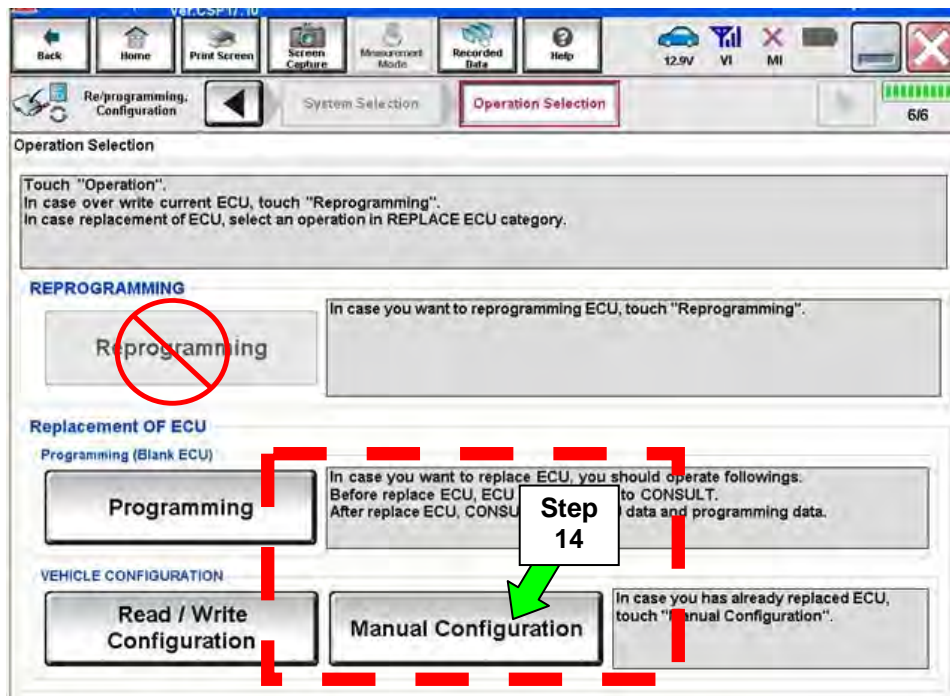


Figure C7

15. Select the correct **TYPE ID** number.

- If needed, use scroll arrows to find the correct number.
 - Use the number you wrote down in step 8 on page 4.
- or
- Refer to Table A below.

16. Select **Next**.

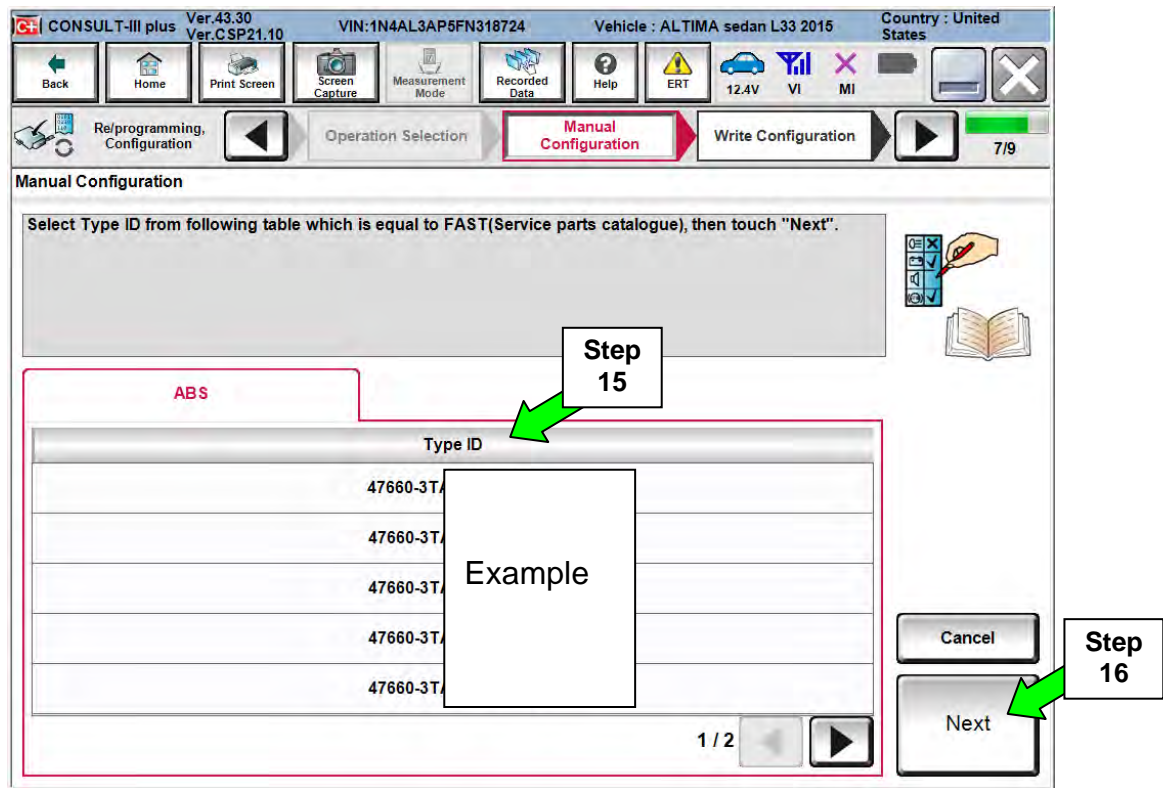


Figure C8

TABLE A

Model and Year	Vehicle Options	TYPE ID #
Altima w/QR25 4 cylinder engine 2013 – 2015	Refer to the electronic parts catalog (FAST). Use the VIN to look up the TYPE-ID, ID NO FOR VDC CONFIGURATION (See next page, Figure C10, for an example.)	
Rogue (T32) 2014 - 2015	FWD with 2 row seating	47660 - 4BA1A
	FWD with 3 row seating	47660 - 4BA5A
	AWD with 2 row seating	47660 – 4FA1A
	AWD with 3 row seating	47660 – 4FA5A
Murano 2015 (see next page for method to determine with or w/out Intelligent Cruise Control)	FWD with Intelligent Cruise Control	47660 – 5AE2B
	FWD w/out Intelligent Cruise Control	47660 – 5AE2A
	AWD with Intelligent Cruise Control	47660 – 5AA2B
	AWD w/out Intelligent Cruise Control	47660 – 5AA2A

For Murano; this button, on the steering wheel, indicates the vehicle is equipped with Intelligent Cruise Control.



Figure C9

NFA010 Nissan FAST for Windows [1]

File Illustration Search Tool Abbreviations Help

VIN-Code: **FN4L5AP2C426908** Model: **BDBA0U2H085AAAGH** US

Model Series: L33 Prod.M/Y: 0514 Color:# QAB Int.Color: G

BODY: 4S ENGINE: QR25DE GRADE: 25SV TRANS: CVT/QR25

EMISSION: CAL

Part Code: Qty: Part No: New Delete

No	Part Code	Qty	Part Number	Description
Per Veh	Sec.	Alternate Part No	I/C CD	Mem Spec SUP AC/ APS. TSB-NO
1	47660	1	47660-3TA0B-	ACTUATOR & ECU ASSY-ANTISKID
01	476			#E
2	476A3	1	47660-3TA5A-	TYPE-ID, ID NO FOR VDC CONFIGURATION
01	476			#E

Items: 2

ENTER AT LEAST 3 DIGITS FOR PARTCODE OR PARTNUMBER SEARCH 11/10/2014 3:02 PM

Figure C10

17. Confirm the correct **TYPE ID** number is selected.

18. Select **OK**.

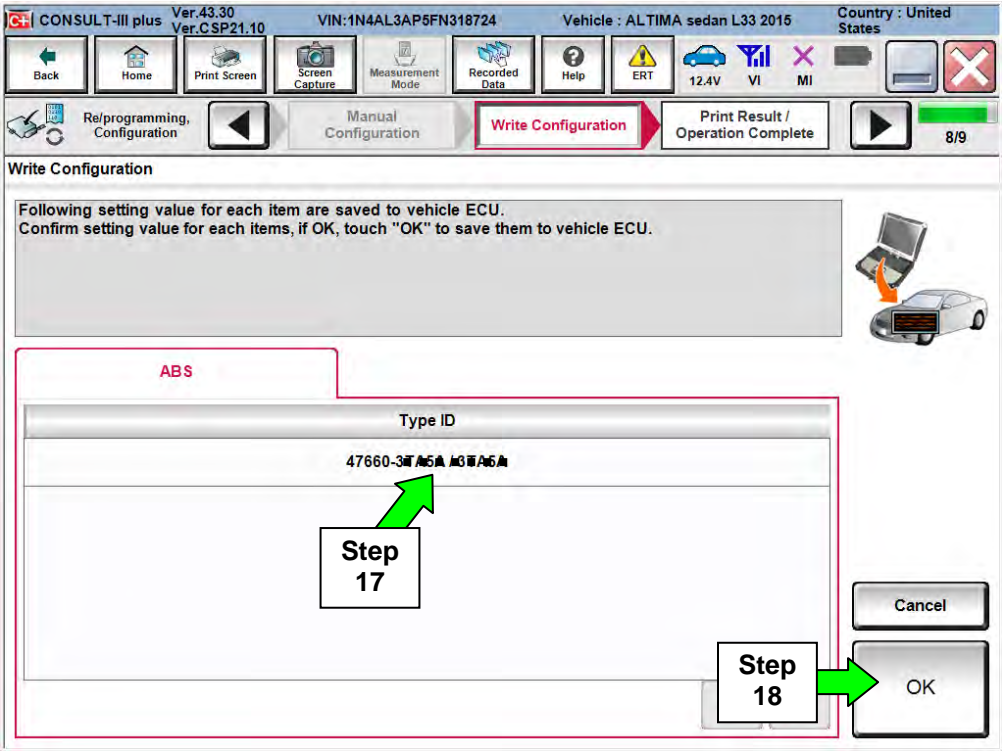


Figure C11

19. Configuration is complete, select **End**.

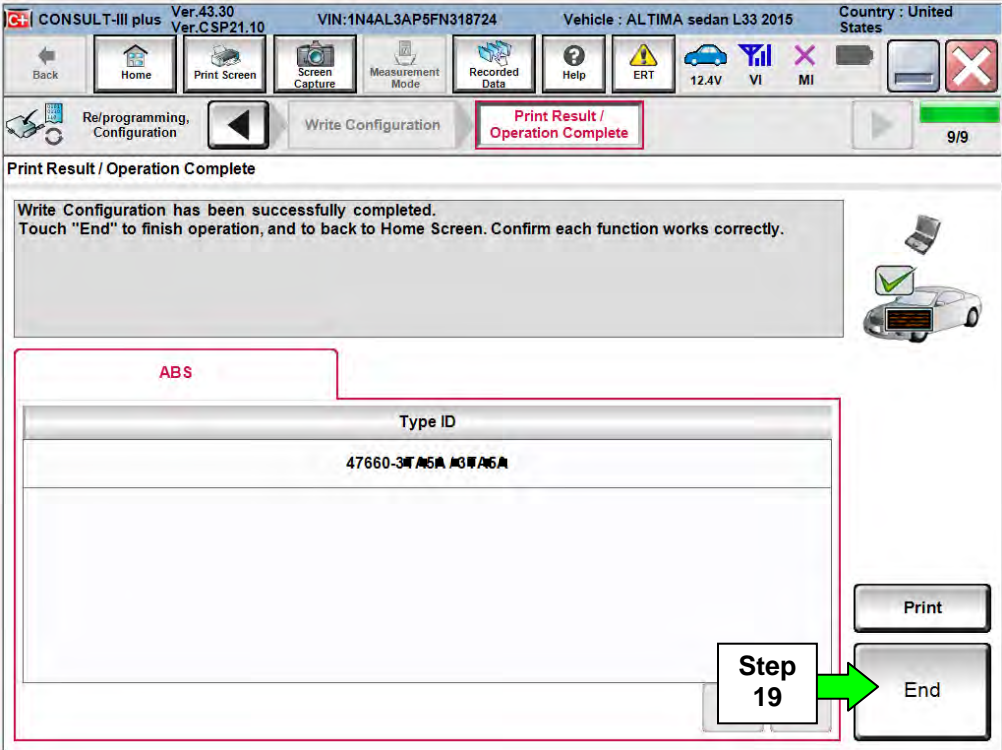


Figure C12