



**NUMBER:** 23-023-15

**GROUP:** Body

**DATE:** June 05, 2015

*This bulletin is supplied as technical information only and is not an authorization for repair. No part of this publication may be reproduced, stored in a retrieval system, or transmitted, in any form or by any means, electronic, mechanical, photocopying, or otherwise, without written permission of FCA US LLC.*

**THIS SERVICE BULLETIN IS ALSO BEING RELEASED AS RAPID RESPONSE TRANSMITTAL (RRT) 15-064. ALL APPLICABLE SOLD AND UN-SOLD RRT VIN'S HAVE BEEN LOADED. TO VERIFY THAT THIS RRT SERVICE ACTION IS APPLICABLE TO THE VEHICLE, USE VIP OR PERFORM A VIN SEARCH IN TECHCONNECT. ALL REPAIRS ARE REIMBURSABLE WITHIN THE PROVISIONS OF WARRANTY.**

***SUBJECT:***

Wind Noise Dual Pane Sunroof

***OVERVIEW:***

This bulletin involves inserting a foam stuffer into the sunroof bulb seal.

***MODELS:***

2015 (UF) Chrysler 200

**NOTE: This bulletin applies to vehicles built on or after March 09, 2014 (MDH 0309XX) and on or before June 02, 2014 (MDH 022414) equipped with Dual-Pane Panoramic Sunroof (sales code GWJ).**

***SYMPTOM/CONDITION:***

The customer may describe a wind noise or whistle sound coming from the sunroof.

***DIAGNOSIS:***

If a customer's VIN is listed in VIP or your RRT VIN list, perform the repair. For all other customers that describe the symptom/condition, perform the Repair Procedure.

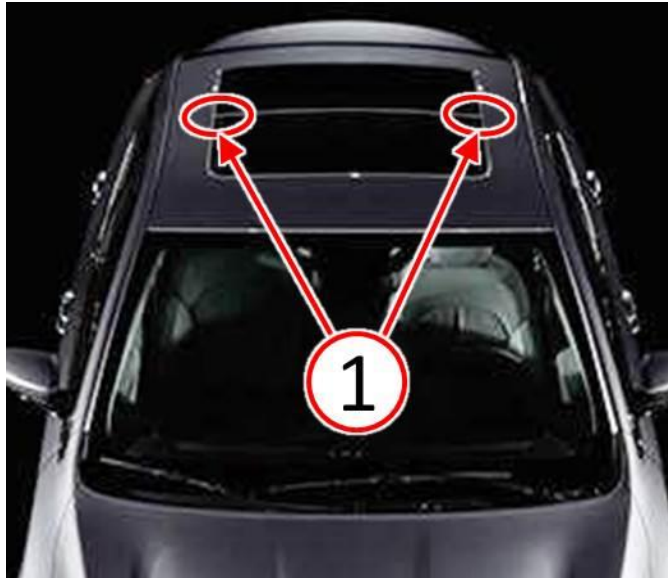
***PARTS REQUIRED:***

Qty.	Part No.	Description
1	68265574AA	Stuffer, Foam
1	04467709	Glue, Bond-All Gel

**NOTE: Each tube of glue will service only one vehicle due to short shelf life once opened.**

**REPAIR PROCEDURE:**

1. With the sunroof closed, inspect the sunroof fixed pane bulb seal in relation to the movable pane on both the right and left side of the vehicle (Fig. 1) and (Fig. 2).

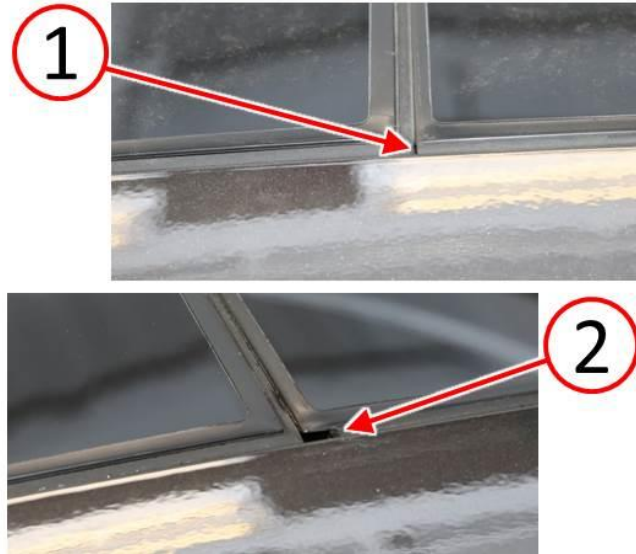


**Fig. 1 Inspection Locations**

1 - Inspect Right And Left Side

---

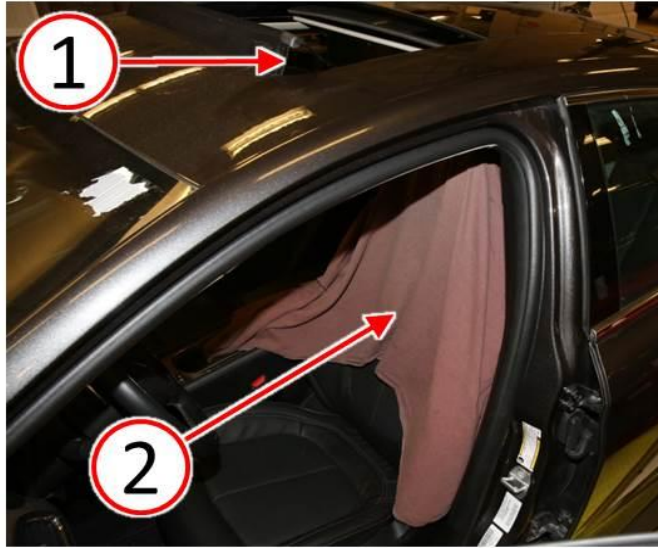
2. Is the distance between the fixed pane bulb seal and the movable sunroof pane greater than 1 mm? ([Fig. 2](#))
  - a. Greater than 1 mm >>> Continue with the Repair Procedure [Step #3](#).
  - b. Less than 1 mm >>> This bulletin has been completed, use LOP (23-XX-XX-XX) to close the active RRT.



**Fig. 2 Gap Inspection**

- 1 - Acceptable - Less Than 1 mm
- 2 - Not Acceptable - Greater Than 1 mm

- 
3. Open the sunroof movable pane (1) and protect the front seat with a clean cover (2) ([Fig. 3](#)).



**Fig. 3 Open Sunroof And Protect Seat**

- 1 - Open Sunroof
- 2 - Protect Seat

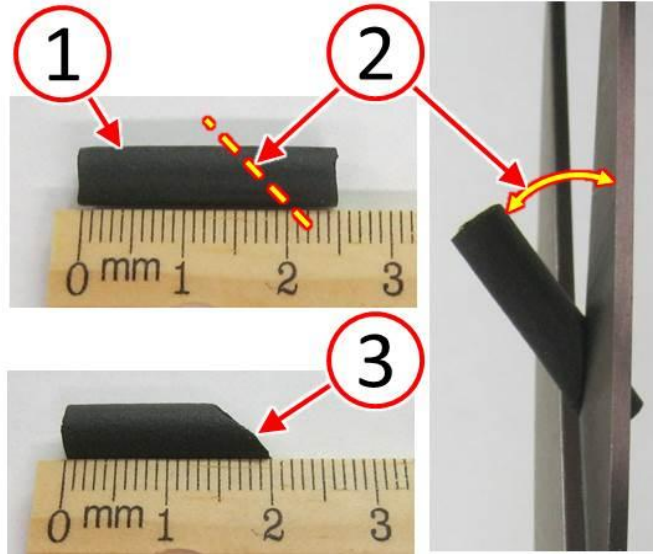
- 
4. Using a cotton swab or equivalent, clean inside the sunroof fixed pane bulb seal (1) with isopropyl alcohol (Fig. 4).



**Fig. 4 Clean Inside Sunroof Fixed Pane Bulb Seal**

- 1 - Sunroof Bulb Seal
-

5. Measure and mark a 20 mm length of foam stuffer (1) to be cut on a 45 degree angle (2) (Fig. 5).
6. Using an appropriate tool, cut the end of the foam stuffer (1) on a 45 degree angle (2) to a length of 20 mm (Fig. 5).
7. After cutting the 45 degree angle, ensure that the final length of the foam stuffer (3) is approximately 20 mm (Fig. 5).

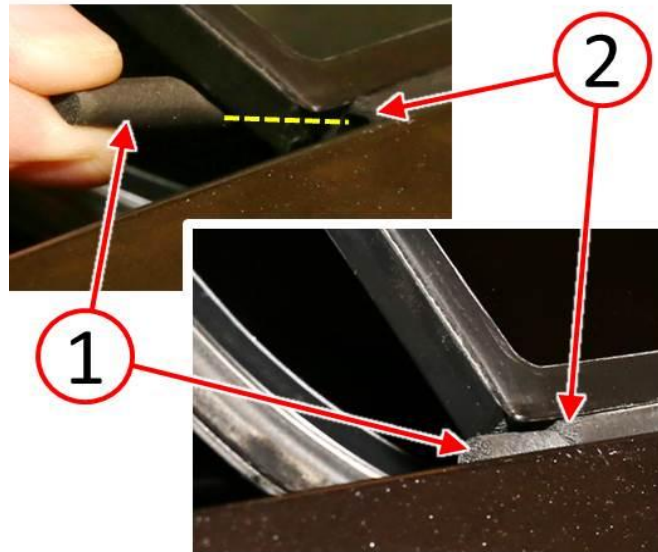


**Fig. 5 Cut Stuffer End On 45 Degree Angle To Proper Length**

- 1 - New Foam Stuffer
- 2 - 45 Degree Angle
- 3 - Foam Stuffer Cut To Proper Length

- 
8. Insert the 45 degree angled end of the foam stuffer into the sunroof fixed pane bulb seal (2) until the foam stuffer (1) is approximately 5 mm over flush of the fixed pane front edge (Fig. 6).

**NOTE: Use a rod, dowel, or equivalent to assist with insertion of the foam stuffer into the bulb seal.**

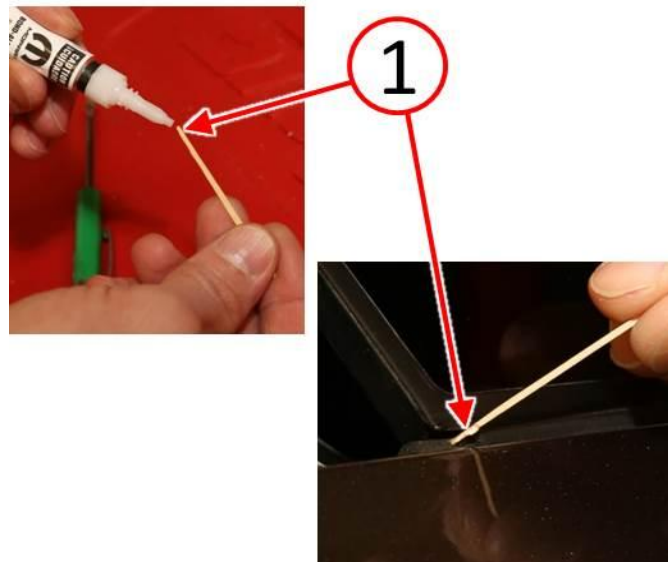


**Fig. 6 Insert Foam Stuffer Into Bulb Seal - Leave Stuffer Over Flush**

1 - Foam Stuffer

2 - Bulb Seal

- 
9. Use a toothpick or equivalent to transfer a small amount of bond-all gel glue to the foam stuffer close to the bulb seal end (Fig. 7).

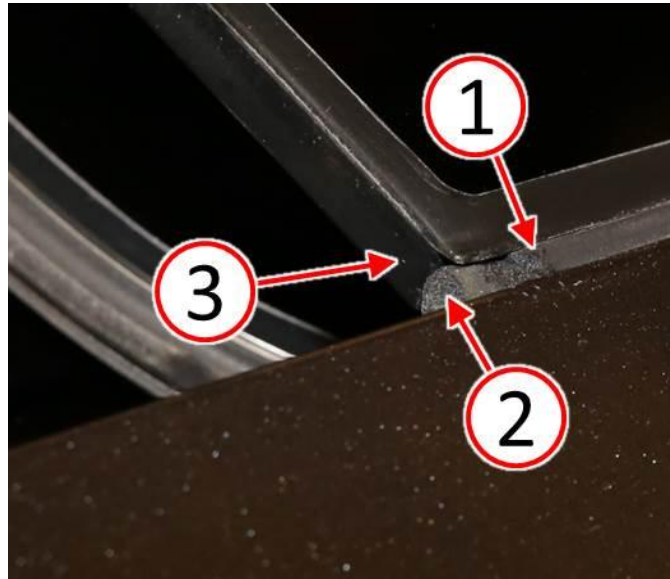


**Fig. 7 Transfer Glue To Stuffer**

1 - Transfer Glue To Foam Stuffer

---

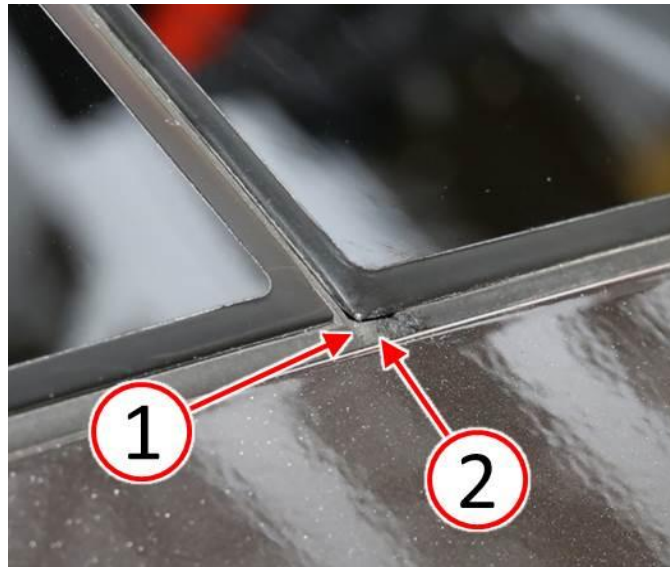
10. Working quickly before the glue dries, insert the foam stuffer (2) into the sunroof fixed pane bulb seal (1) until the foam stuffer (2) is flush to 0.5 mm overflush in relation to the sunroof fixed pane front edge (3) (Fig. 8).



**Fig. 8 Insert Foam Stuffer Flush With Sunroof Edge**

- 1 - Sunroof Fixed Pane Bulb Seal
  - 2 - Foam Stuffer
  - 3 - Sunroof Fixed Pane Front Edge
-

11. Complete the same repair process [Step #4](#) through [Step #10](#) for the opposite side if the gap was greater than 1 mm on both sides.
12. Close the sunroof to verify there is no gap or gap is less than 1 mm between the foam stuffer (2) and the movable sunroof pane (1) ([Fig. 9](#)).



**Fig. 9 Inspect Repair For No Gap**

1 - Movable Sunroof Pane

2 - Foam Stuffer

---

***POLICY:***

Reimbursable within the provisions of the warranty.



**TIME ALLOWANCE:**

<b>Labor Operation No:</b>	<b>Description</b>	<b>Skill Category</b>	<b>Amount</b>
23-51-72-90	Inspect For Seal Gap At Sunroof (1 - Semi-Skilled)	6 - Electrical and Body Systems	0.2 Hrs.
23-51-72-91	Inspect And Repair Seal Gap At Sunroof - One Side (1 - Semi-Skilled)	6 - Electrical and Body Systems	0.2 Hrs.
23-51-72-92	Inspect And Repair Seal Gap At Sunroof - Both Sides (1 - Semi-Skilled)	6 - Electrical and Body Systems	0.4 Hrs.

**FAILURE CODE:**

ZZ	Service Action
----	----------------

**PART REIMBURSEMENT DETAIL:**

<b>Part No:</b>	<b>Description</b>
NPN	Glue, Bond-All Gel

**NOTE: This part number is for reimbursement only and will need to be claimed for Dealer Net of Part No. 04467709 or it will be rejected.**