

Service Bulletin

Circolare Tecnica - Technisches Rundschreiben - Circulaire Technique - Circular Tecnica

Date: 26th May 2015

Subject: **Windshield support check**

Product: **Turismo Veloce**

We inform you that it is necessary the checking of the windshield support's screw with the application of thread lock for the Turismo Veloce model. These improvements are the result of the continuous quality control of our motorcycles.

It is mandatory to perform the update on the interested motorcycles before consignment to the customer.

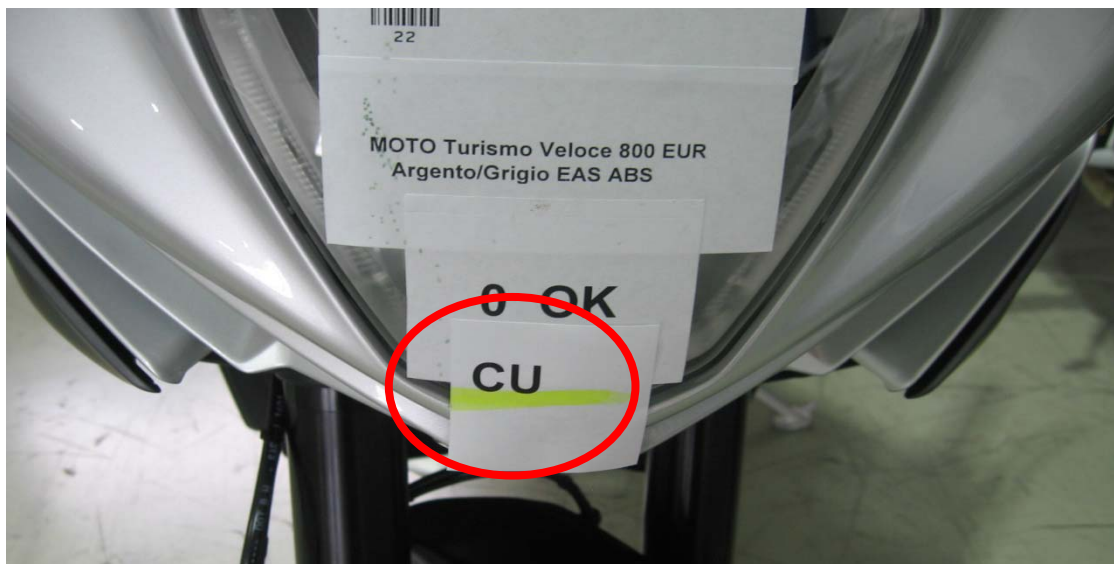
Updates are necessary on the following bikes:

- **MODEL TURISMO VELOCE up to VIN ...V000560 included**

PLEASE NOTE:

- The motorcycles with higher VIN numbers have already been updated.

- Motorcycles with VIN included in the VIN range indicated, but tagged with the sticker "CU" as you can see in the image below, have already been updated in MV Agusta.



PROCEDURE TO IMPLIMENT THE UPDATE:

1 – Take off the coloured front fairing border if present.
Unscrew the two screws that fix the dashboard support.



2 – Paying attention to not disconnect the connector of the dashboard from the wiring, put the dashboard and the dashboard support on the left side in order to have enough space for work.



3 – Check the fixing of the external screw (8Nm), if the screw is not tightened, tighten it .

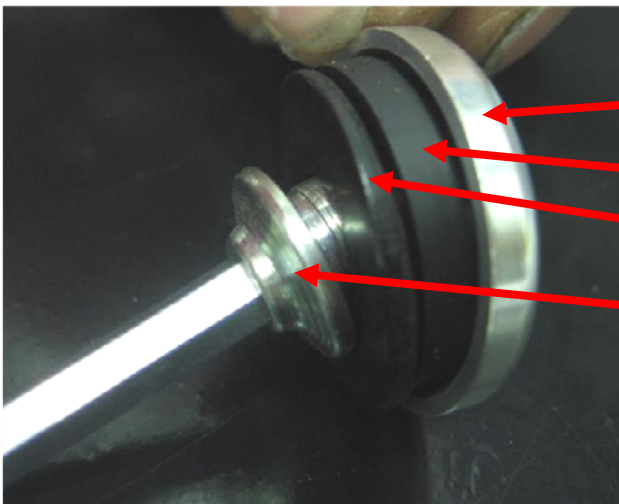


4 – Only after having tightened the external screw, using two keys, unscrew the internal screw, holding the external screw blocked.



5 – take off the screw and all the elements of the internal fixing, ensure that you have followed this sequence: screw, black washer, rubber washer put in the cup.

If all the elements are present according to the indicated sequence, proceed with the assembly adding Loctite 243 on the first threads of the screw. (if one or more components are missing order the necessary spare parts to warehouse and then proceed inserting the codes in the warranty claim)



Cup 8000C0311

Rubber washer 8000C0312

Washer 8000B2725

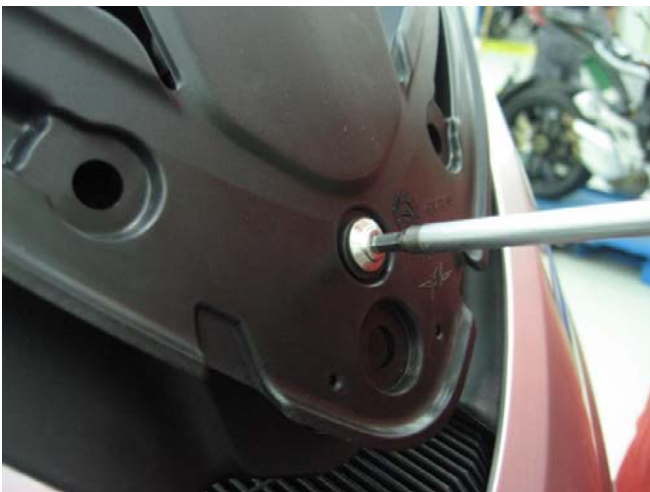
Screw 8A00B2672



6 – Tighten the internal screw up to 5-6 Nm ensuring to keep the external screw blocked.



7 – Recheck the fixing of the external screw (8Nm), if the screw is not tightened, tighten it.



8 – Ensure that the support is well fixed and doesn't move, then fix the dashboard and his support in the relevant space.



Procedure for Warranty reimbursement:

Send a Warranty Request for reimbursement of labor including all the relevant data regarding the motorcycle, entering the following codes:

- Warranty Type= GS
- Special Warranty Code= 2802
- Operation Code: R - 999
- Labor: 0,3 hours
- Defect Code: 074

Please make note to this same communication.

The reimbursement of the warranty request will be carried out via Invoice as is the normal procedure.

Thank you in advance for your cooperation, for any need we advice you to contact the MV Agusta Service Dept.

Best Regards,
MV AGUSTA MOTOR S.p.A.
Technical Service Department