

© 2015 Mazda Motor of America, Inc.

<b>Subject:</b>  REAR CONSOLE LID IS LOOSE	<b>Bulletin No:</b> 09-023/15
	<b>Last Issued:</b> 12/14/2015

## BULLETIN NOTE

- This bulletin supersedes the previous bulletin 09-023/15 issued on 06/02/2015, 09-045/14, issued on 11/24/2014 and 10/23/2014. The PARTS and WARRANTY INFORMATION have been revised.
- Changes are noted below in Red beside the change bar.

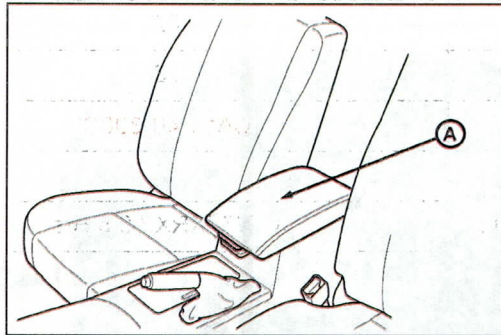
## APPLICABLE MODEL(S)/VINS

2014-2015 Mazda3 Japan built vehicles with VINs lower than JM1 BM \*\*\*\*\* 255207 (produced before January 12, 2015)

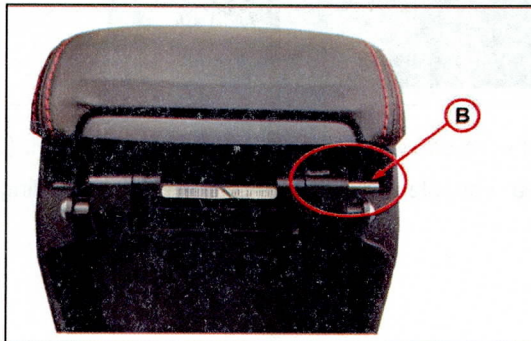
2014-2015 Mazda6 vehicles with VINs lower than JM1 GJ \*\*\*\*\* 186473 (produced before May 14, 2014)

## DESCRIPTION

Some customers may complain about a loose rear console lid (A).



This may be caused by hinge pins coming partially off (B) or completely off.



Customers having this concern should have their vehicle repaired using the following repair procedure.

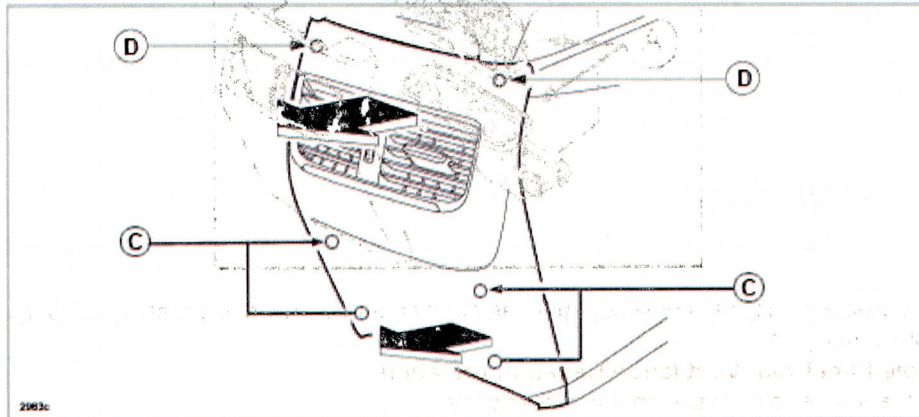
Page 1 of 5

**CONSUMER NOTICE:** The information and instructions in this bulletin are intended for use by skilled technicians. Mazda technicians utilize the proper tools/equipment and take training to correctly and safely maintain Mazda vehicles. These instructions should not be performed by "do-it-yourselfers." Customers should not assume this bulletin applies to their vehicle or that their vehicle will develop the described concern. To determine if the information applies, customers should contact their nearest authorized Mazda dealership. Mazda North American Operations reserves the right to alter the specifications and contents of this bulletin without obligation or advance notice. All rights reserved. No part of this bulletin may be reproduced in any form or by any means, electronic or mechanical—including photocopying and recording and the use of any kind of information storage and retrieval system—without permission in writing.

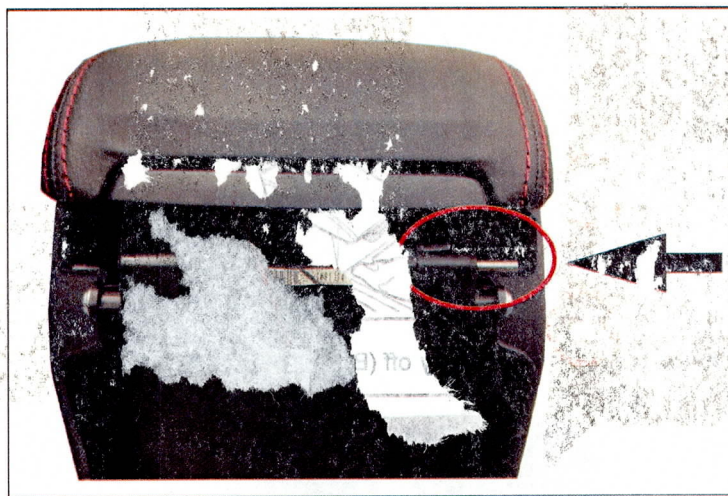
## REPAIR PROCEDURE

1. Verify customer concern.
2. Remove the rear console panel by pulling in the direction of the arrows shown below.

**NOTE:** Begin by pulling from the bottom to detach inner attachment clips (C), then continue pulling from the top to detach inner attachment clips (D).



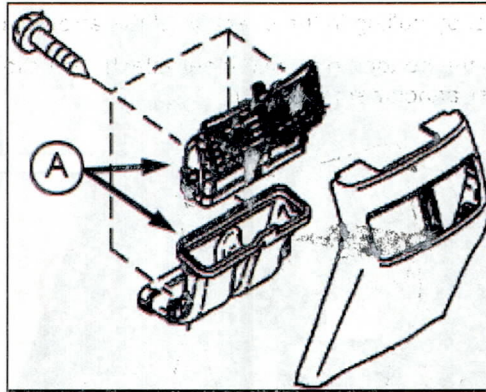
3. Re-install the rear console lid pin(s) back to the original position.



4. **Mazda3 and Mazda6 without ventilation**, install a new rear console panel. (See PART(S) INFORMATION)

**NOTE:** The shape of the rear console panel has been changed, by adding a stopper rib to prevent the pin from coming off.

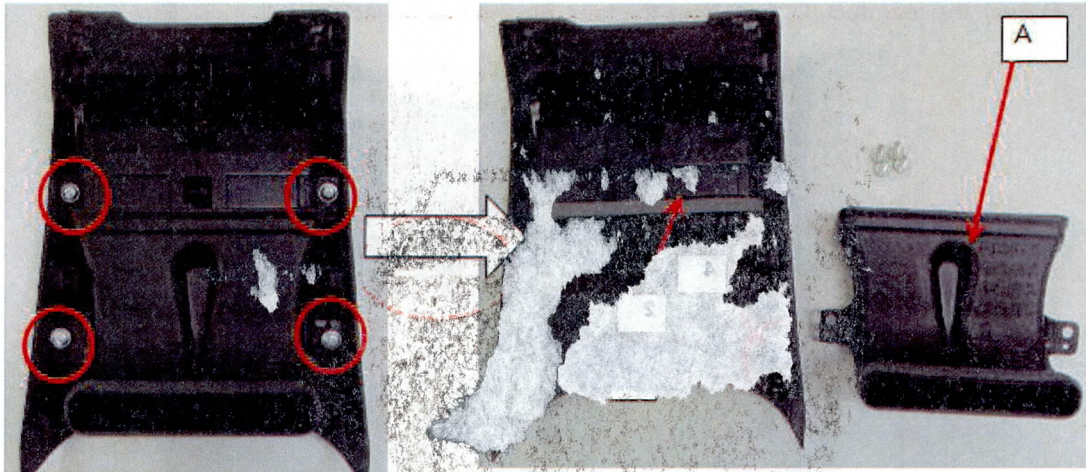
5. Mazda6 with ventilation, install a new rear console panel (see PART(S) INFORMATION) and reuse the rear and front ducts (A).



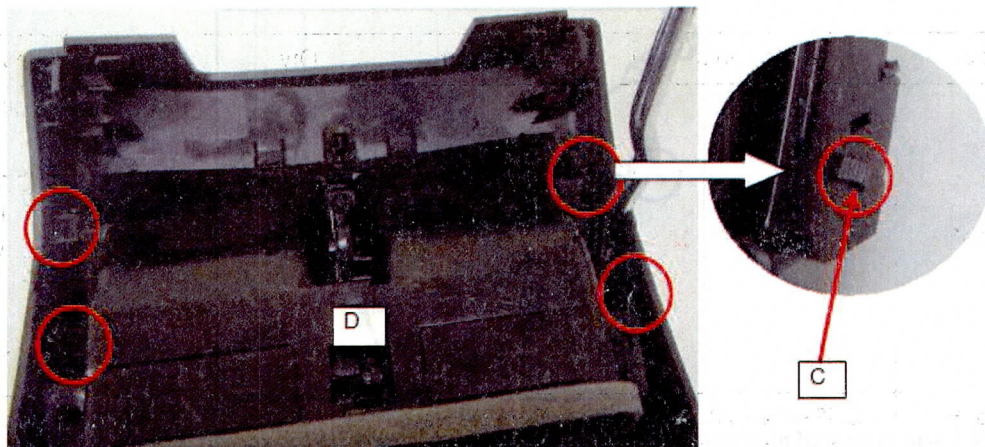
**NOTE:** The shape of the rear console panel has been changed, by adding a stopper rib to prevent the pin from coming off.

**Rear Console Panel with Ventilation Repair Information**

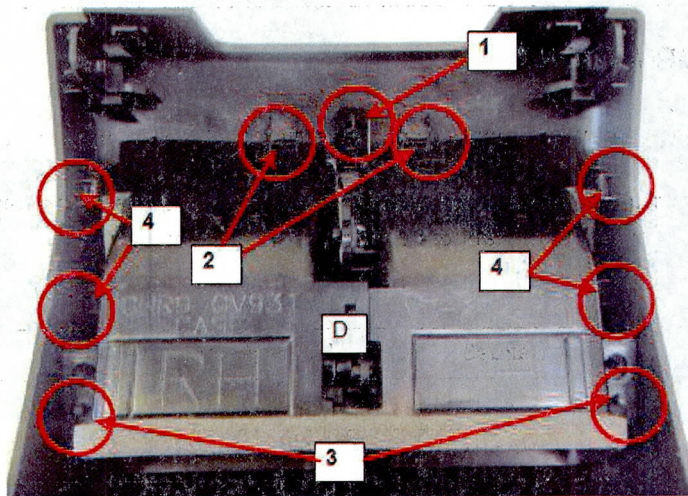
- a. Remove the 4 screws from the front and rear ducts.
- b. Remove the front duct (A) from the rear console panel (B).



- c. While opening both side ends of the rear console panel, disengage the tabs (C) of the rear duct (D) from the rear console panel, then remove the rear duct.

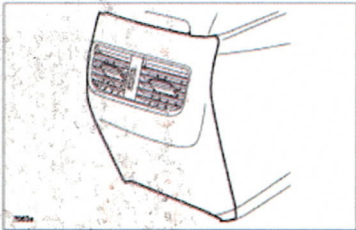
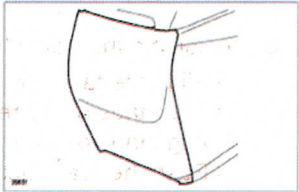


- d. Install the front duct to the new rear console panel using the following steps.
- 1) Align the tab of the rear console panel and the hole of the rear duct.
  - 2) Align tabs of the rear duct and holes of the rear console panel.
  - 3) Align tabs of the rear console panel and holes of the rear duct.
  - 4) Push the rear duct (D) to engage the tabs into the rear console.



- e. Install the front duct to the rear console panel in reverse order of removal.  
f. Install the 4 duct screws.
6. Verify repair.

**PART(S) INFORMATION**

Model	Part Number	Description	Qty.	Notes
Mazda6	GHR1-64-47Y 02	Rear Console Panel (without ducts)	1	With Ventilation 
Mazda6	GHP9-64-470 -02	Rear Console Panel	1	Without Ventilation 
Mazda3	BHN1-64-471 -02	Rear Console Panel	1	

**WARRANTY INFORMATION**

**NOTE:**

- This warranty information applies only to verified customer complaints on vehicles eligible for warranty repair.
- This repair will be covered under Mazda's New Vehicle Limited Warranty term.
- Additional diagnostic time cannot be claimed for this repair.

	Mazda3	Mazda6 without ventilation	Mazda6 with ventilation
Warranty Type	A	A	A
Symptom Code	91	91	91
Damage Code	97	97	97
Part Number Main Cause	BHN1-64-471 -02	GHP9-64-470 02	GHR1-64-47Y 02
Quantity	1	1	1
Operation Number / Labor Hours:	XXK9XXRX / 0.2 Hrs.	XXK9XXRX / 0.2 Hrs.	XXK9XARX / 0.3 Hrs.