

Subject

**Fuel Injection Active Test Remedy - 2GR-FKS and 8AR-FTS**

Market

USA

Service Category

Engine/Hybrid System

Section

Fuel System

Applicability

2015-2016 8AR-FTS and 2GR-FKS models

**APPLICABLE VEHICLES**

2016	GS200T	2016	RX350
2015-2016	NX200T	2016	IS200T
2016	RC200T		

**CONDITION**

TMS has discovered the current engine active test "Control the Injection Mode" is not operating as desired when controlling the direct injectors manually on 2GR-FKS or 8AR-FTS engines.

When direct injection is started and then stopped using the active test, current ECU logic does not turn off the direct injectors and can cause DTCs P017200, P017500 and P0160300.

**In order to avoid this condition, technicians should raise engine RPM when changing from Direct Injection active test to Port Injection active test.**

Use the recommended procedure below to avoid this concern while testing injection mode of 2GR-FKS or 8AR-FTS equipped vehicles.

**NOTE:** If the active test is used multiple times without using this procedure to raise engine RPM, it may be necessary to reset learning values for fuel trim and Air to Fuel ratio before returning vehicle to customer.

**RECOMMENDATIONS**

See Recommendations on the following pages.

Subject

# Fuel Injection Active Test Remedy - 2GR-FKS and 8AR-FTS

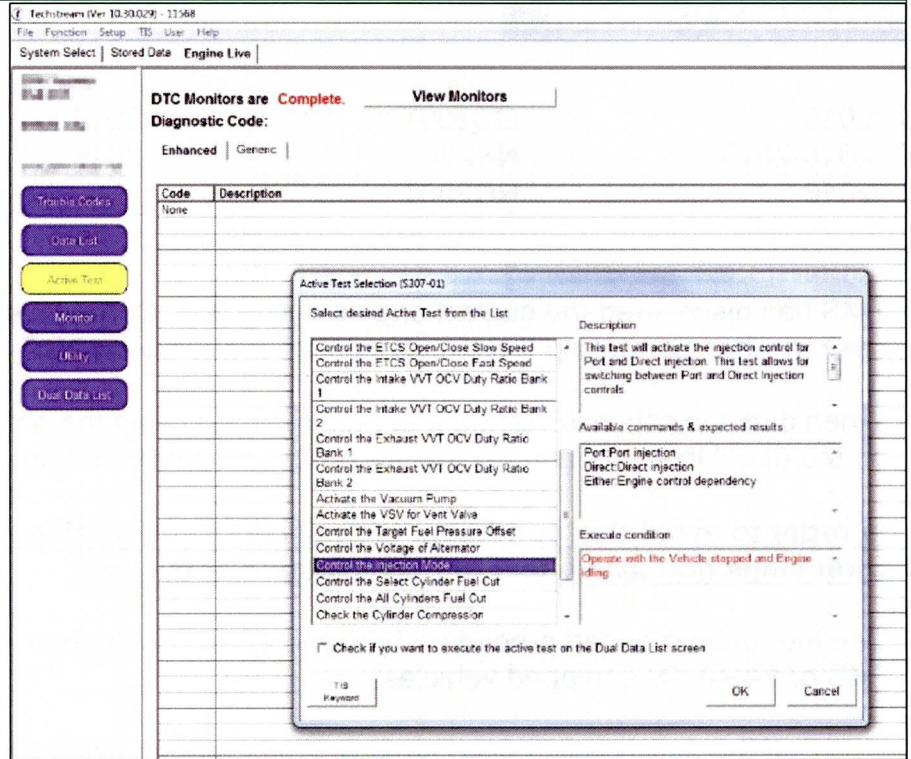
Market  
USA

Applicability

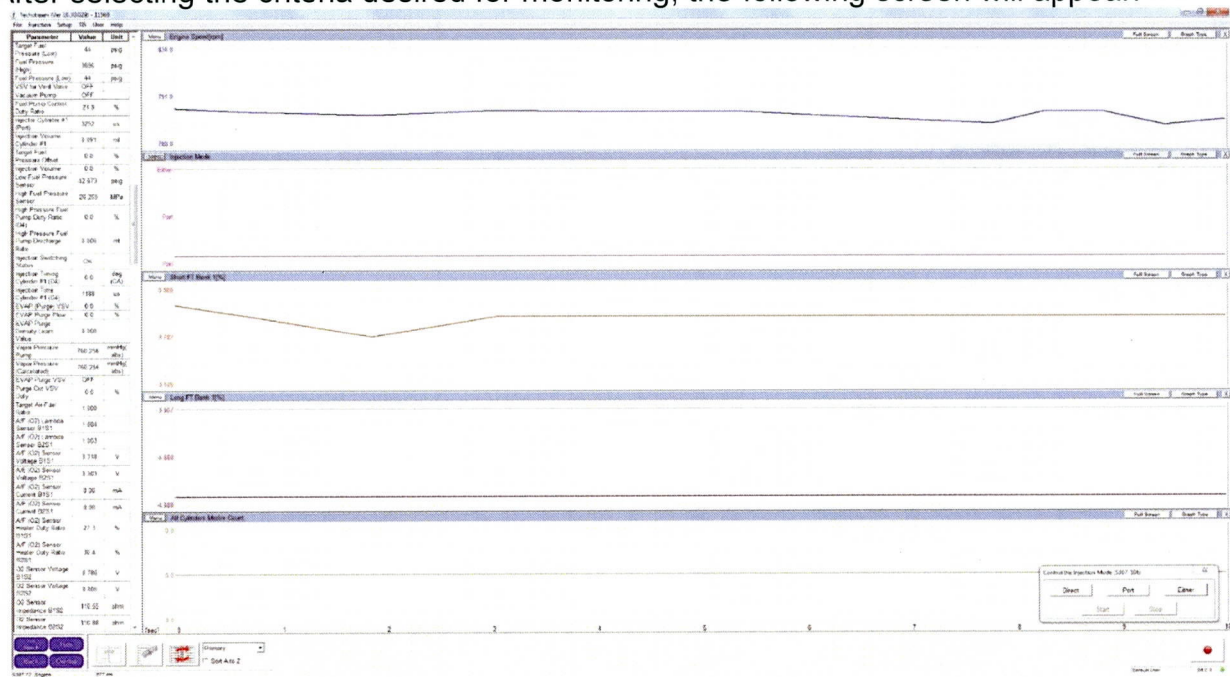
2015-2016 8AR-FTS and 2GR-FKS models

## RECOMMENDATIONS

- System Select → Engine → Active Test → Control the Injection Mode → OK



- After selecting the criteria desired for monitoring, the following screen will appear:



Subject

# Fuel Injection Active Test Remedy - 2GR-FKS and 8AR-FTS

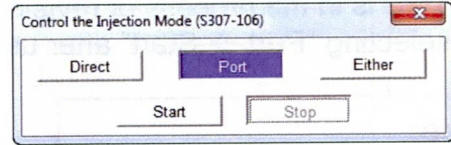
Market  
USA

Applicability

2015-2016 8AR-FTS and 2GR-FKS models

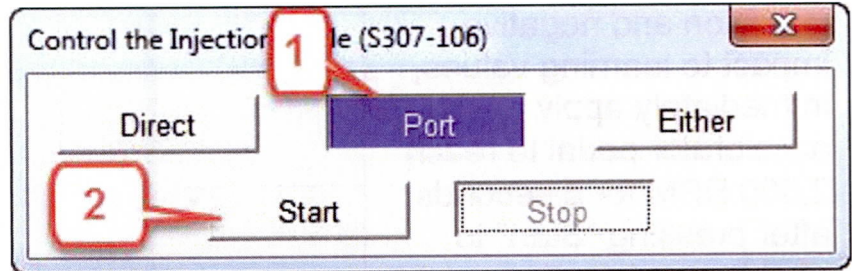
## RECOMMENDATIONS

- Utilize the active test control window to command direct injectors or port injectors to "Start" and "Stop."



### Key Point:

When switching from direct injection active test, to port injection active test, raise engine RPM to 2,000 RPM for 5 seconds immediately after pressing "Port → Start" as shown below.



**3.) Press accelerator pedal to raise RPM to 2,000 for 5 seconds**

- The data below shows an example of NG condition with no RPM increase, and Good condition with RPM increase.



Subject

# Fuel Injection Active Test Remedy - 2GR-FKS and 8AR-FTS

Market  
USA

Applicability

2015-2016 8AR-FTS and 2GR-FKS models

## RECOMMENDATIONS

- TMS is in the process of revising the Techstream software to include a special notice when selecting "Port → Start" after using direct injection active test which will appear as:

**Notice:**

To avoid potential stall condition and negative impact to learning values, immediately apply accelerator pedal to reach 2,000 RPM for 5 seconds after pressing "Start" to enable port injection mode.

## LINK REFERENCES

This Tech Tip does not contain any link references